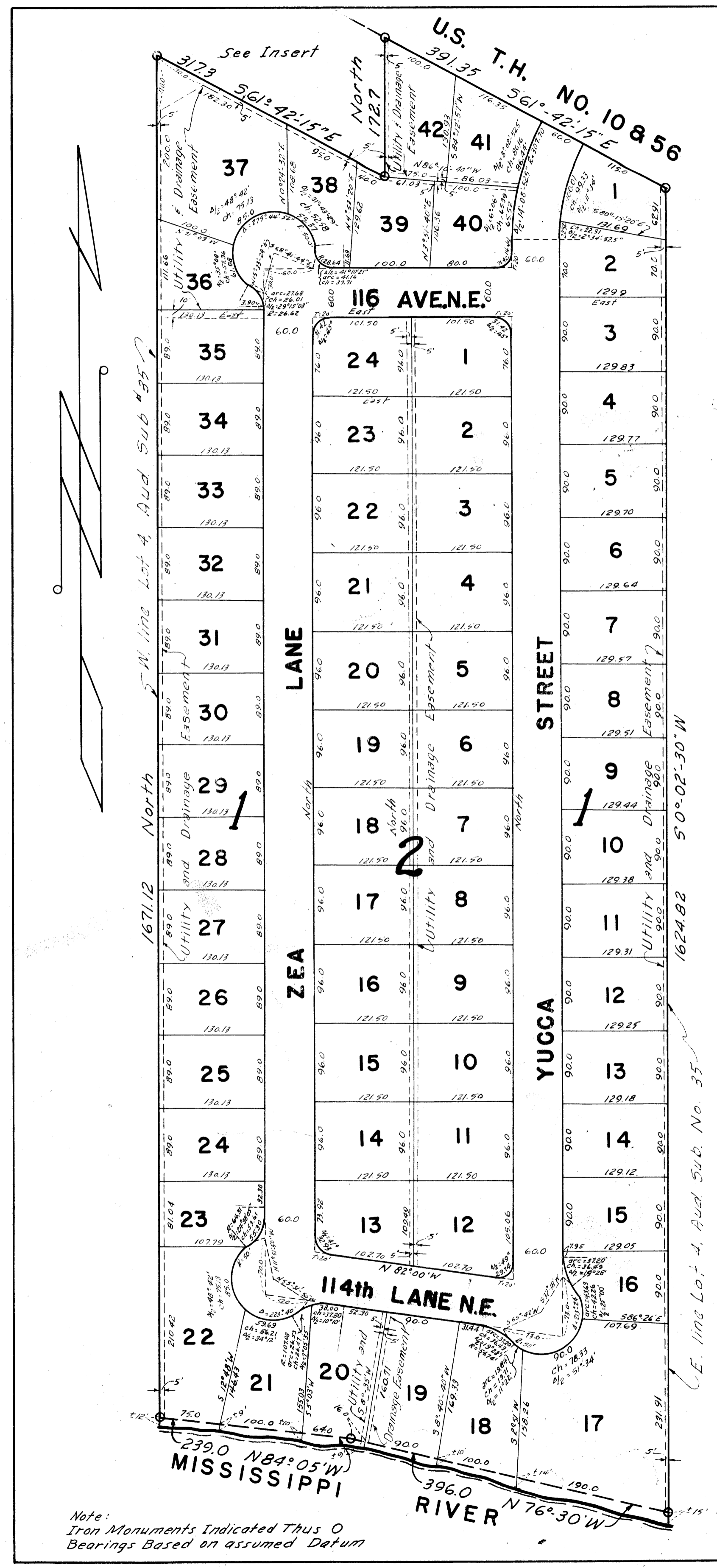


NEITGE ADDITION

ANOKA COUNTY-MINNESOTA

SCALE 1 INCH=100 FEET



Know all men by these presents: That the Neitge Construction Co., Inc., a Minnesota Corporation, owners of the following described property situated in the State of Minnesota and County of Anoka to wit: Lot 4, Auditors Subdivision No. 35, Anoka County, Minnesota, except that part described as follows: Beginning at a point on the West line of said Lot 4, distant 100 feet Southwest measured at right angles from the center line of the old U.S. Military Road, now known as State Highway No. 10; thence Southeasterly parallel with the center line of said Highway No. 10 a distance of 317.3 feet; thence South parallel with the West line of said Lot 4 a distance of 172.7 feet; thence Northwesterly parallel with the center line of said Highway No. 10 a distance of 317.3 feet to the West line of said Lot 4; thence North along the West line of said Lot 4 a distance of 172.7 feet to the point of beginning. Have caused the same to be surveyed and platted as NEITGE ADDITION and do hereby donate and dedicate to the public for public use forever the Lane and Drive as shown on the annexed plat. Also subject to utility and drainage easements as shown on the annexed plat for the use of municipality and other public utilities for installation and maintenance of facilities installed in and over said easements to serve adjacent or other premises in the vicinity.

In witness whereof Neitge Construction Co., Inc. has caused these presents to be signed by its proper officers and its corporate seal to be hereunto affixed this 23rd day of July A.D. 1956

In presence of
Edith R. Rennie
Arline Elickson

Neitge Construction Co., Inc.
Eugene C. Neitge Pres.
Edward M. Smith Sec.

State of Minnesota } s.s.
 County of Hennepin }
 On this 23rd day of July A.D. 1956, before me, a Notary Public within and for said County and State, personally appeared Eugene C. Neitge and Edward A. Smith, who each being duly sworn did say that they are respectively the President and Secretary of Neitge Construction Co., Inc., a Minnesota Corporation, the Corporation named in the foregoing instrument, and the seal affixed to the same instrument is the corporate seal of said Corporation and that said instrument was signed and sealed in behalf of said Corporation by authority of its board of directors; and said President and said Secretary acknowledged said instrument to be the free act and deed of said Corporation.

Edith Rennie
 Notary Public, Hennepin County, Minnesota ~ My Commission expires Jan. 11, 1962

I hereby certify that I have surveyed and platted the property described in this plat as NEITGE ADDITION, that this plat is a correct representation of said survey; that all distances are correctly shown on the plat in feet and decimals of a foot; that the monuments for the guidance of future surveys have been correctly placed in the ground as shown on the plat; that the outside boundary lines are correctly designated on the plat; that the topography of the land is correctly shown on the plat and that there are no wet lands or public highways to be designated on said plat other than as shown thereon.

Keith P. Caswell Jr.
 Keith P. Caswell Jr., Registered Civil Engineer and Land Surveyor
 Minnesota Reg. No. 3959

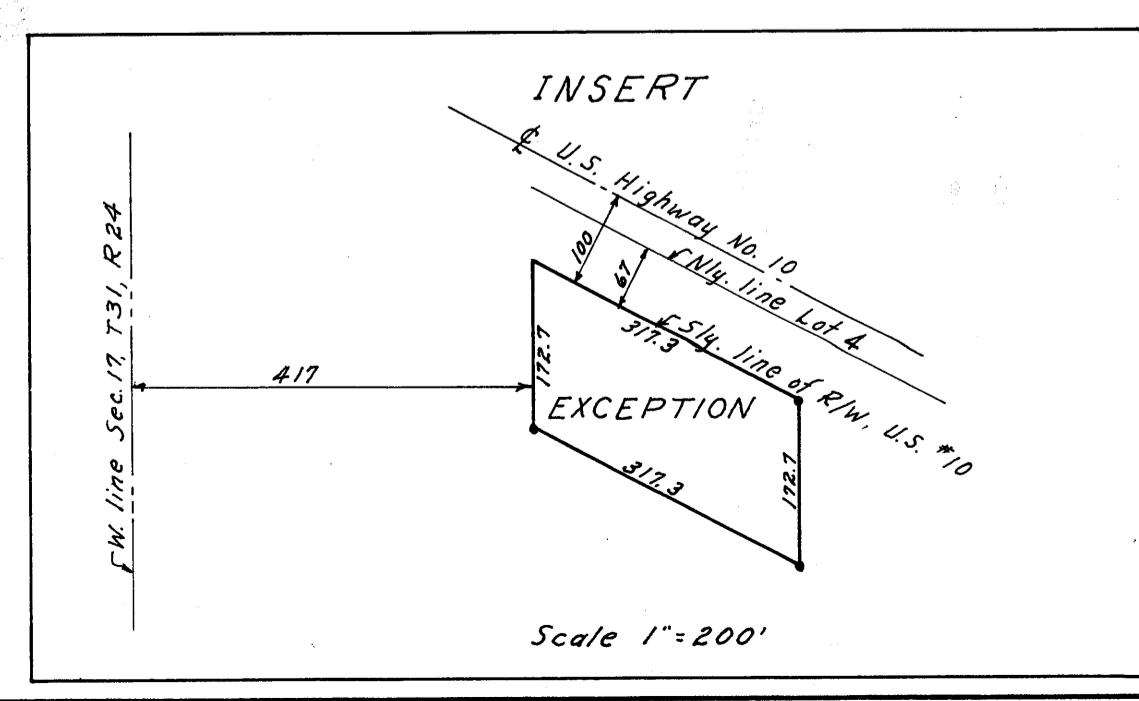
State of Minnesota } s.s.
 County of Hennepin }
 The above certificate was subscribed and sworn to before me this 19th day of July A.D. 1956.

Edith Rennie
 Notary Public, Hennepin County, Minnesota
 My Commission Expires Jan. 11, 1962

The above and foregoing plat of NEITGE ADDITION was approved and accepted by the Village Council of Coon Rapids, Minnesota at a regular meeting thereof held this 1st day of August A.D. 1956.

By J. M. Mason Its Mayor
 By Paul Jalbot Its Clerk

The above and foregoing plat of NEITGE ADDITION was approved and accepted by the Planning Commission of the Village of Coon Rapids, Minnesota at a regular meeting thereof held this 24th day of July A.D. 1956.



175563
 OFFICE OF REGISTER OF DEEDS } ss
 STATE OF MINNESOTA, COUNTY OF ANOKA }
 I hereby certify that the within instrument was filed in my office for record on the 23rd day of July, 1956, at 9:30 a.m. and was duly recorded in 23 of 23 of 23 of plates 23.

Hesterde Skinner
 Register of Deeds
 By Margaret Deputy

HEREBY CERTIFY THAT TAXES FOR THE YEAR 1955 ON THE LANDS DESCRIBED WITHIN ARE PAID

Staten D. Bowers
 County Treasurer
 By M. Nielsen, Deputy

TAXES PAID
 This 14th day of July, 1956
Ann G. Leav Its Chairman
Holly Jay Its Secretary

Staten D. Bowers
 Auditor, Anoka County, Minn.
 By Jean South Deputy

Note: Iron Monuments Indicated Thus O Bearings Based on assumed Datum