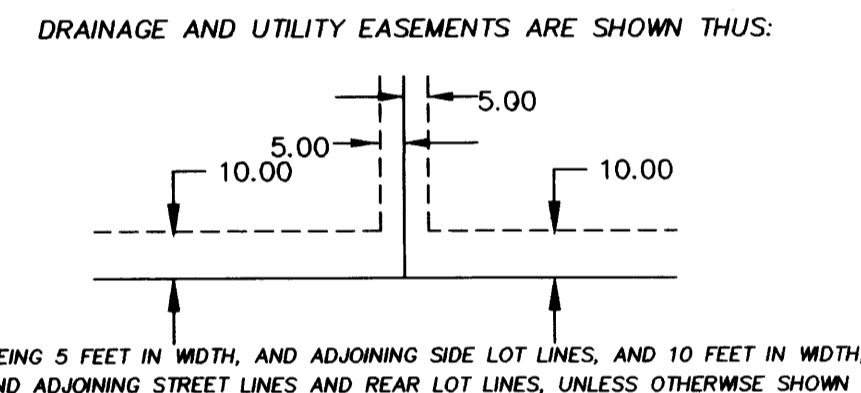
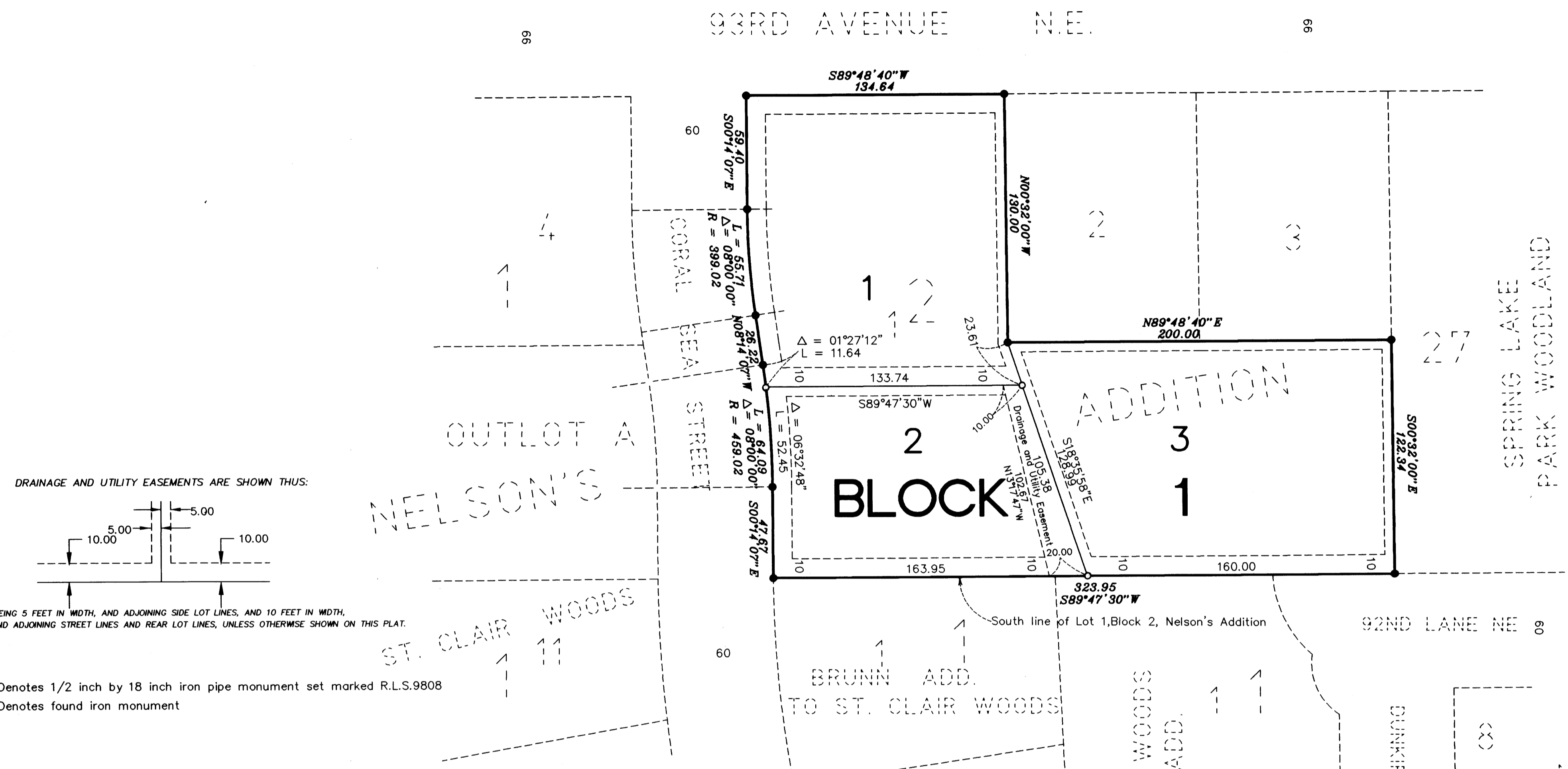


NELSON'S 2ND ADDITION



- Denotes 1/2 inch by 18 inch iron pipe monument set marked R.L.S.9808
- Denotes found iron monument

KNOW ALL MEN BY THESE PRESENTS: That Thomas T. Nelson, a single person, owner of the following described property situated in the State of Minnesota, County of Anoka, to wit:

Lot 1, Block 2, NELSON'S ADDITION

Has caused the same to be surveyed and platted as NELSON'S 2ND ADDITION and do hereby donate and dedicate to the public for the public use forever the easements for drainage and utility purposes as shown on this plat.

In witness whereof said Thomas T. Nelson, owner has hereunto set his hand this 16 day of FEB, 2000

*Thomas T. Nelson*  
Thomas T. Nelson

STATE OF MINNESOTA  
COUNTY OF ANOKA  
The foregoing instrument was acknowledged before me this 16<sup>TH</sup> day of FEB, 2000 by Thomas T. Nelson, a single person.

*Larry D. Holum*  
Notary Public, ANOKA County, Minnesota  
My Commission Expires JAN. 31, 2005

LARRY D. HOIUM  
Notary Public-Minnesota  
Anoka County  
My Commission Expires Jan. 31, 2005

I hereby certify that I have surveyed and platted the property described on this plat as NELSON'S 2ND ADDITION; that this plat is a correct representation of said survey, that all distances are correctly shown on the plat in feet and hundredths of a foot; that all monuments have been correctly placed in the ground as shown; that the outside boundary lines are correctly designated on said plat and that there are no wetlands as defined in MS 505.02, Subd.1, or public highways to be designated other than as shown on said plat.

*Ernest G. Rud*  
Ernest G. Rud, Land Surveyor  
Minnesota License No. 9808

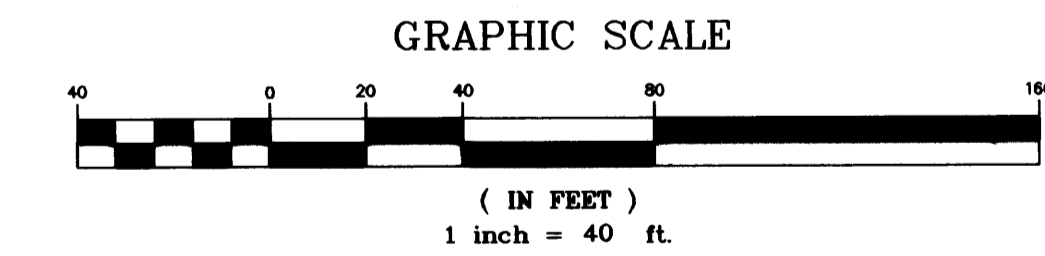
STATE OF MINNESOTA  
COUNTY OF ANOKA  
The foregoing surveyor's certificate was acknowledged before me this 7<sup>TH</sup> day of February, 2000 by Ernest G. Rud, Licensed Land Surveyor.

*Cassleen R. Bruno*  
Notary Public, Anoka County, Minnesota  
My Commission Expires January 31, 2005



I HEREBY CERTIFY THAT THE CURRENT AND DELINQUENT TAXES ON THE LANDS DESCRIBED WITHIN ARE PAID AND THE TRANSFER IS ENTERED  
Feb. 16 2000  
PROPERTY TAX ADMINISTRATOR  
BY *J. Culver*  
DEPUTY PROPERTY TAX ADMINISTRATOR

349859  
Office of REGISTRAR OF TITLES  
STATE OF MINNESOTA  
COUNTY OF ANOKA  
I hereby certify that the within instrument was filed in this office on 2-16-2000 at 10:15 o'clock A.M.  
Edward W. Gussler, Embrover of Titles  
By *C.B.* Deputy Registrar of Titles



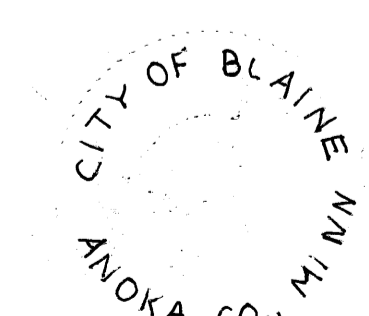
For the purposes of this plat the South line of Lot 1, Block 2, Nelson's Addition is assumed to have a bearing of S 89°47'30" W.

This plat of NELSON'S 2ND ADDITION was approved and accepted by the City Council of Blaine, Minnesota, at a regular meeting thereof held this 20<sup>th</sup> day of JANUARY, 2000, and if applicable, the written comments and recommendations of the Commissioner of Transportation and the County Highway Engineer have been received by the City or the prescribed 30 day period has elapsed without receipt of such comments and recommendations, as provided by Minnesota Statutes, Section 505.03, Subdivision 2.

By *Sam Ryan* Mayor  
By *Joyce Schubert* Clerk

This plat has been checked and approved this 16<sup>th</sup> day of February, 2000

*Larry D. Holum*  
Larry D. Holum  
Anoka County Surveyor



E. G. RUD & SONS, INC.

2000013412 \$59.50