

NETTAS PRESERVE

City of Ham Lake
County of Anoka
Sec. 15, T32, R23

SE 1/4 OF SEC. 10

KNOW ALL PERSONS BY THESE PRESENTS: That LaSalle Investment, LLC, a Minnesota limited liability company, owner of the following described property:
 The Northeast One-Quarter of Section 15, Township 32, Range 23, Anoka County, Minnesota, except the West 660.05 feet of the North 330.00 feet of the South 573.00 feet, as measured along and parallel with the South and West lines of the Northeast One-Quarter of Section 15, Township 32, Range 23, Anoka County, Minnesota.

Has caused the same to be surveyed and platted as NETTAS PRESERVE and does hereby dedicate to the public for public use the drainage and utility easements and the public ways as shown by this plat. Also dedicating to the County of Anoka the right of access onto County State Aid Highway No. 60 as shown in this plat.

In witness whereof said LaSalle Investment, LLC, a Minnesota limited liability company, has caused these presents to be signed by its proper officer
 this 3rd day of July, 2018
 LASALLE INVESTMENT, LLC

Jesse D. Osborne
 Jesse D. Osborne, President

STATE OF MINNESOTA
 COUNTY OF Anoka

This instrument was acknowledged before me on 7.2.18 by Jesse D. Osborne, President of LaSalle Investment, LLC, a Minnesota limited liability company.

Karen D. Johansen
 Notary Public, Anoka County, Minnesota
 My Commission Expires 03.26.15

I, Jason E. Rud do hereby certify that this plat was prepared by me or under my direct supervision; that I am a duly Licensed Land Surveyor in the State of Minnesota; that this plat is a correct representation of the boundary survey; that all mathematical data and labels are correctly designated on this plat; that all monuments depicted on this plat have been, or will be correctly set within one year; that all water boundaries and wet lands, as defined in Minnesota Statutes, Section 505.01, Subd. 3, as of the date of this certificate are shown and labeled on this plat; and all public ways are shown and labeled on this plat.

Dated this 29th day of JUNE, 2018

Jason E. Rud
 Jason E. Rud, Licensed Land Surveyor
 Minnesota License No. 41578

STATE OF MINNESOTA
 COUNTY OF Anoka

This instrument was acknowledged before me this 29th day of June, 2018 by Jason E. Rud.

Lakae Mack
 Notary Public, Anoka County, Minnesota
 My Commission Expires 01/31/2022

CITY COUNCIL, CITY OF HAM LAKE, MINNESOTA

This plat of NETTAS PRESERVE was approved and accepted by the City Council of the City of Ham Lake, Minnesota at a regular meeting thereof held this 4th day of June, 2018 and said plat is in compliance with the provisions of Minnesota Statutes, Section 505.03, Subd. 2.

By: Michael M. Veck Mayor
 By: Sam Miller Clerk

COUNTY SURVEYOR

I hereby certify that in accordance with Minnesota Statutes, Section 505.021, Subd. 11, his plat has been reviewed and approved this 3rd day of July, 2018.

Charles F. Gitzen
 Charles F. Gitzen
 Anoka County Surveyor

COUNTY AUDITOR/TREASURER

Pursuant to Minnesota Statutes, Section 505.021, Subd. 9, taxes payable in the year 2018 on the land hereinbefore described have been paid. Also, pursuant to Minnesota Statutes, Section 272.12, there are no delinquent taxes and transfer entered this 2nd day of July, 2018.

Jonell Sawyer
 Property Tax Administrator

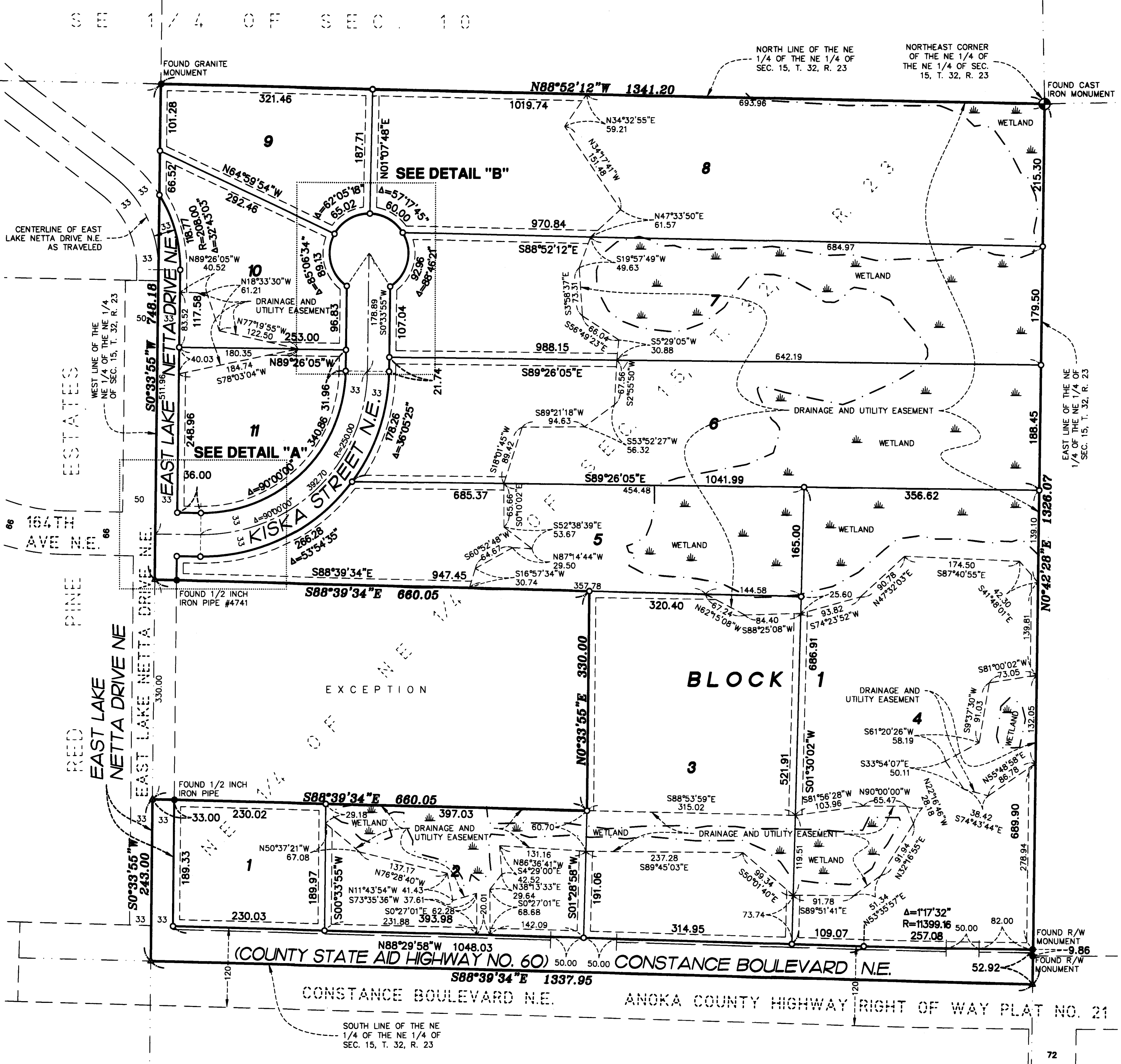
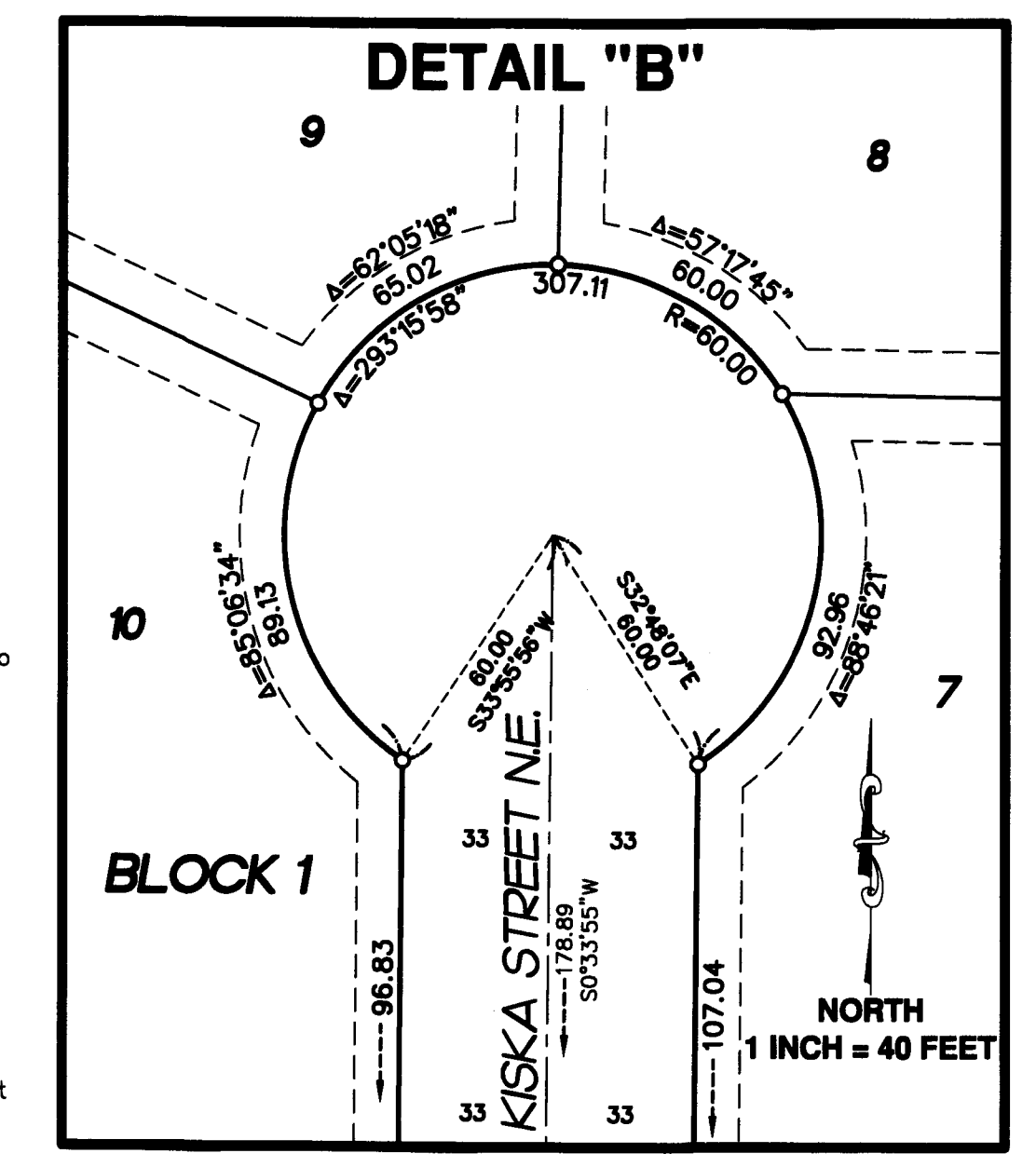
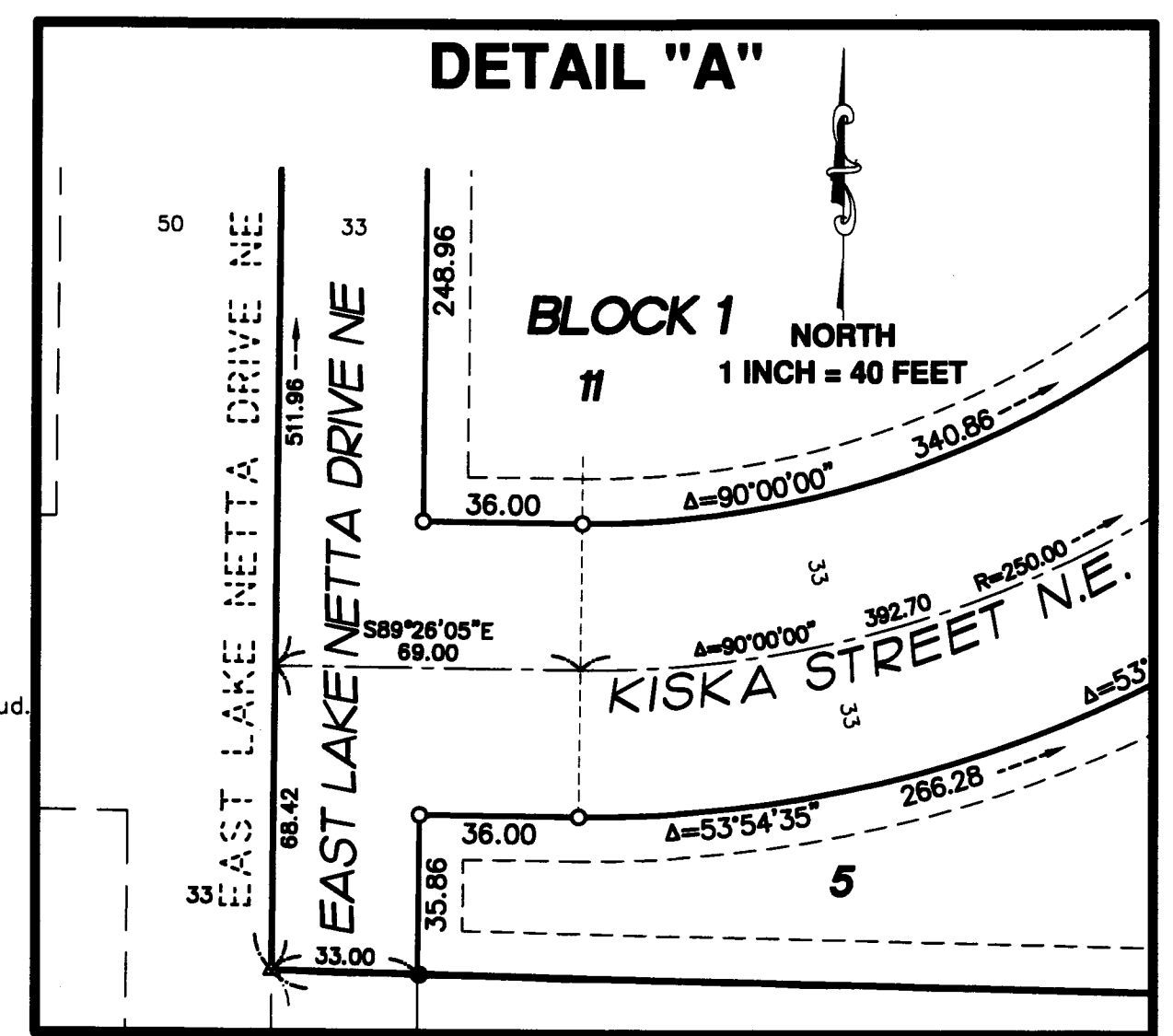
By: Emily Lu Deputy

COUNTY RECORDER/REGISTRAR OF TITLES
 COUNTY OF ANOKA, STATE OF MINNESOTA

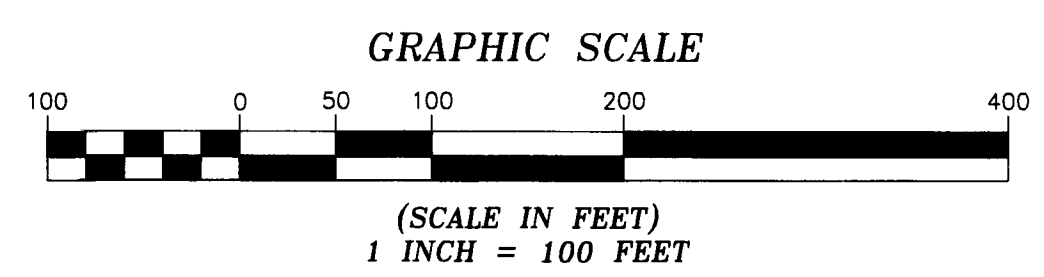
I hereby certify that this plat of NETTAS PRESERVE was filed in the office of the County Recorder/Registrar of Titles for public record on this 3rd day of July, 2018 at 9:56 o'clock A.M. and was duly recorded as Document Number 2203192001

Jonell Sawyer
 County Recorder/Registrar of Titles

By: Emily Lu Deputy



NORTH

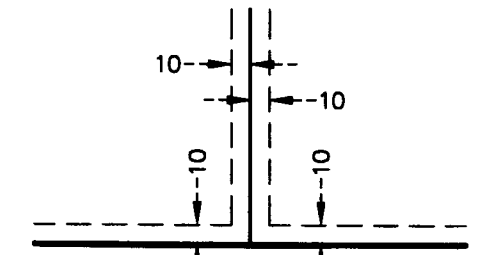


LEGEND

- DENOTES ANOKA COUNTY MONUMENT
- DENOTES IRON MONUMENT FOUND AS LABELED
- DENOTES 1/2 INCH BY 14 INCH IRON PIPE SET, MARKED RLS NO. 41578
- DENOTES MAG NAIL SET
- DENOTES WETLAND EDGE AS DELINEATED BY JACOBSON ENVIRONMENTAL IN AUGUST 2017.
- - - DENOTES RIGHT OF ACCESS DEDICATED TO ANOKA COUNTY

For the purposes of this plat, the North line of the Northeast Quarter of the Northeast Quarter of Section 15, Township 32, Range 23, Anoka County, Minnesota is assumed to have a bearing of North 88 degrees 52 minutes 12 seconds West.

DRAINAGE AND UTILITY EASEMENTS ARE SHOWN THUS



BEING 10 FEET IN WIDTH ADJOINING RIGHT OF WAY LINES AND ADJOINING LOT LINES UNLESS OTHERWISE SHOWN.