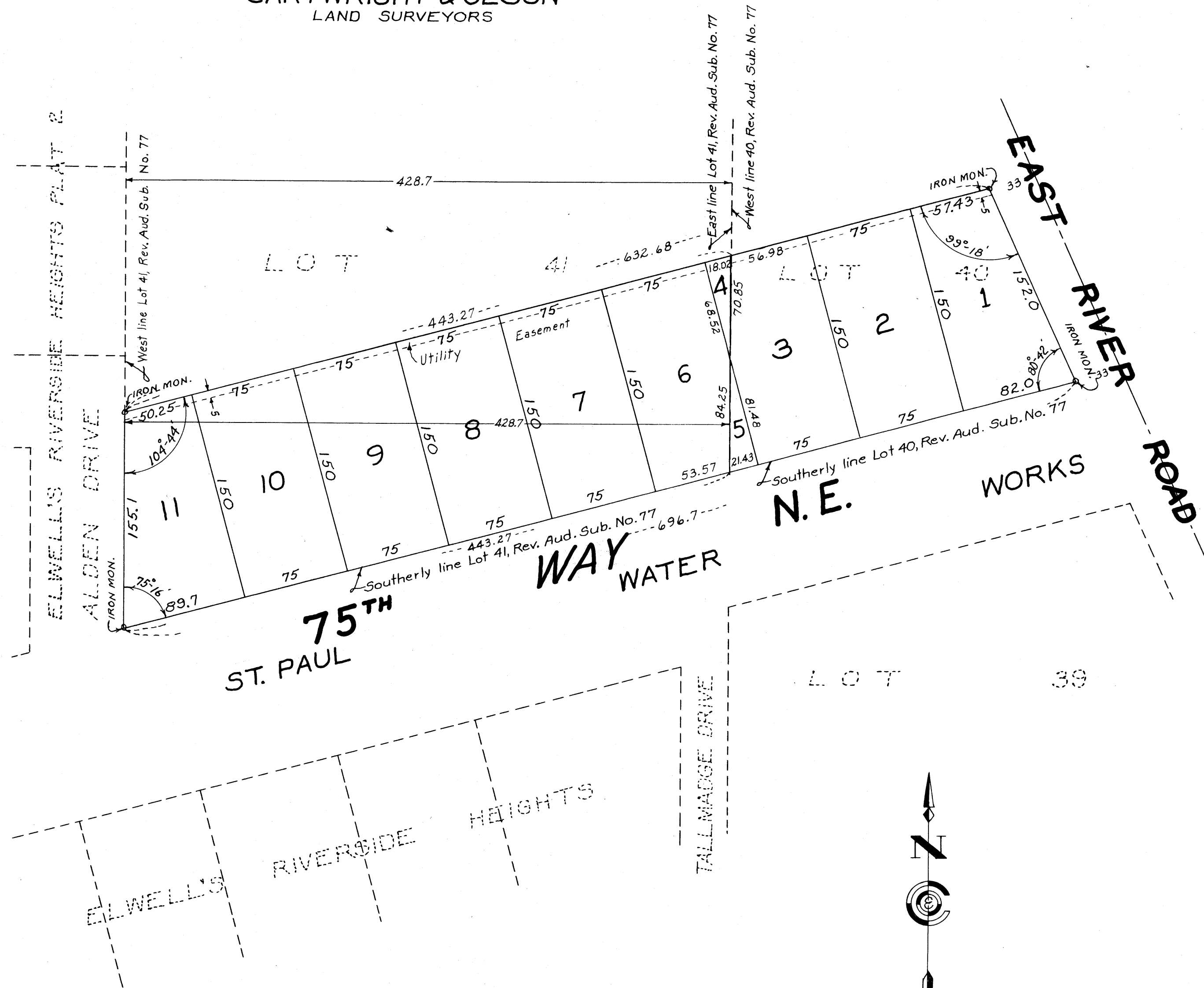


NIEMANN ADDITION

VILLAGE OF FRIDLEY

CARTWRIGHT & OLSON
LAND SURVEYORS



KNOW ALL MEN BY THESE PRESENTS: That we, D.W. Harstad Co. Inc., a Minnesota Corporation, owners and proprietors of the following described property situate in the County of Anoka, State of Minnesota to-wit: That part of Lots Forty (40) and Forty-one (41), Revised Auditors Subdivision No. 77, Anoka County, Minnesota described as follows: The South One Hundred Fifty (150.0) feet of said Lot Forty (40) as measured at right angles with the South line of said Lot Forty (40) and the South One Hundred Fifty (150.0) feet of said Lot Forty-one (41) as measured at right angles with the South line of said Lot Forty-one (41), according to the duly recorded plat thereof, have caused the same to be surveyed and platted as NIEMANN ADDITION, and do hereby donate and dedicate to the public for public use forever the Roads as shown on the annexed plat, also subject to Utility easements as shown on the annexed plat. In witness whereof we have hereunto set our hands and seals this 11th day of October A.D. 1954

In the presence of

Signed
D.W. Harstad Co., Inc.

Gilbert Swanson and James R. Poffel As to Donald W. Harstad
Gilbert Swanson and James R. Poffel As to D.E. Oberg

Donald W. Harstad
President
W. Oberg
Secretary Treasurer

STATE OF MINNESOTA } s.s.
COUNTY OF ANOKA }

On this 11th day of October A.D. 1954 before me, a Notary Public within and for said County and State personally appeared Donald W. Harstad and D.E. Oberg, to me personally known who being each by me duly sworn did say that they are respectively President and Secretary Treasurer of D.W. Harstad Co., Inc., a Minnesota Corporation, the Corporation named in the foregoing instrument, that said instrument was signed and sealed in behalf of said Corporation by authority of its Board of Directors, that the seal affixed to said instrument is the Corporate seal of said Corporation and said Donald W. Harstad and D.E. Oberg acknowledge said instrument to be the free act and deed of said Corporation.

Robert S. Hughes
Notary Public, Anoka County, Minnesota
My Commission Expires Dec. 14, 1960

I hereby certify that I have surveyed and platted the land described in the dedication on this plat as NIEMANN ADDITION; that this plat is a correct representation of said survey; that all distances are correctly shown on said plat in figures denoting feet and decimals of a foot; that the monuments for the guidance of future surveys have been correctly placed in the ground as shown on said plat; that the topography of the land is correctly shown on said plat; that the outside boundaries of the land are correctly designated on said plat; and that there are no wet lands or public highways to be designated on said plat other than are shown thereon.

Henry A. Cartwright
Registered Land Surveyor, Minnesota Registration No. 1983

STATE OF MINNESOTA } s.s.
COUNTY OF HENNEPIN }

Above certificate subscribed and sworn to before me, a Notary Public within and for said County and State on this 1st day of October A.D. 1954

Clara Mae Ducky
Notary Public, Hennepin County, Minnesota
My Commission Expires April 11, 1961

We hereby certify that the Village Council of the Village of Fridley, Anoka County, Minnesota, duly accepted and approved the annexed plat of NIEMANN ADDITION, at a regular meeting thereof held this 18 day of October A.D. 1954

Robert S. Hughes
Mayor
Erica Dradner
Village Manager

Scale: 1" = 60'

17667
Office of REGISTRAR OF TITLES
STATE OF MINNESOTA
COUNTY OF ANOKA
I hereby certify that the within instrument was filed in this office on the NOV 5 day of 1954 at 9 o'clock P.. M.
Carlisle Plummer Registrar of Titles
DEPUTY REGISTRAR OF TITLES

159864
OFFICE OF REGISTER OF DEEDS,
STATE OF MINNESOTA, COUNTY OF ANOKA
I hereby certify that the within instrument was filed in this office for record on the NOV 5 day of 1954 at 9 o'clock P.. M. and was duly recorded in DEEDS PLATS page 30
Carlisle Plummer
Register of Deeds

TAXES PAID
This 18 day of Oct 1954
James R. Campbell
Auditor, Anoka County, Minn.
by Jean Cassette, Deputy
HEREBY CERTIFY THAT TAXES FOR THE YEAR 1953 ON THE LANDS DESCRIBED WITHIN ARE PAID
Shalters Powers
County Treasurer