

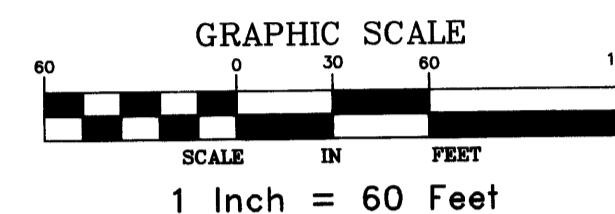
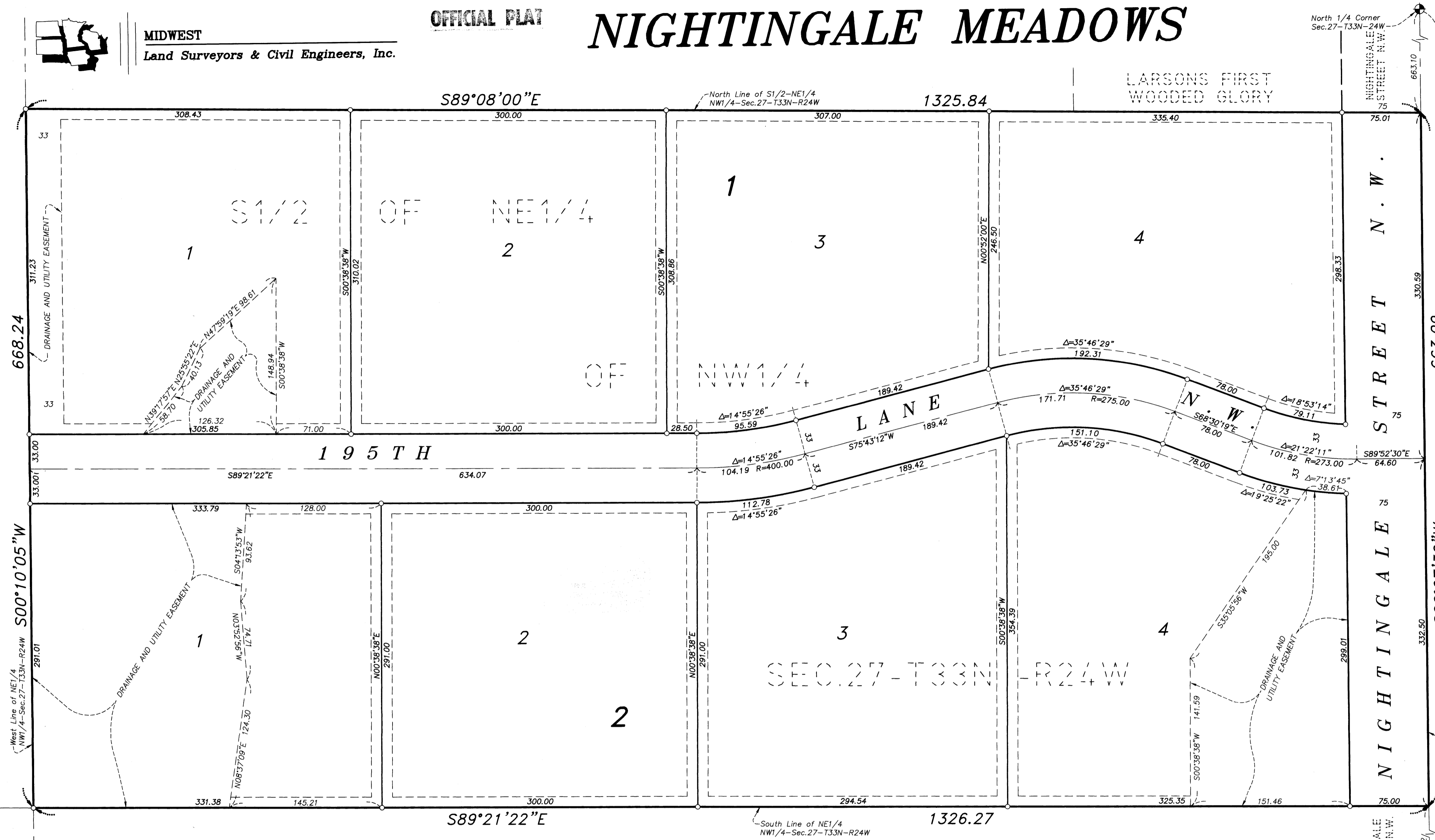


MIDWEST  
Land Surveyors & Civil Engineers, Inc.

OFFICIAL PLAT

# NIGHTINGALE MEADOWS

BK 161 Abst Pg 50  
CITY OF OAK GROVE  
COUNTY OF ANOKA  
SEC. 27-T33N-R24W

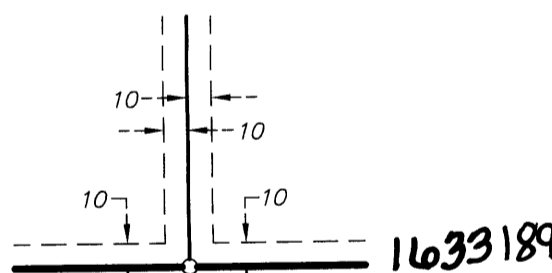


**NOTES:**

- - DENOTES 1/2 INCH BY 14 INCH IRON PIPE MONUMENT SET AND MARKED WITH A PLASTIC CAP INSCRIBED "RLS 10947"
- - DENOTES MONUMENT FOUND
- ⊕ - DENOTES ANOKA COUNTY MONUMENT

FOR THE PURPOSES OF THIS PLAT THE EAST LINE OF THE NORTHEAST QUARTER OF SECTION 27-T33N-R24W IS ASSUMED TO HAVE A BEARING OF S00°07'30"W.

DRAINAGE AND UTILITY EASEMENTS ARE SHOWN THUS:  
BEING 10 FEET IN WIDTH AND ADJOINING LOT LINES AND RIGHT-OF-WAY LINES UNLESS OTHERWISE SHOWN ON THE PLAT.



1633189  
OFFICE OF COUNTY RECORDER

STATE OF MINNESOTA COUNTY OF ANOKA

I hereby certify that the within instrument was filed in this office for record on the 31 of Dec, A.D., 2001

at 11:30 o'clock A.M. and was duly recorded in book 161 Abst. page 50

Maura J. Davis  
County Recorder

By M.E. Deputy  
Deputy

KNOW ALL PERSONS BY THESE PRESENTS: That Swift Construction, Inc., a Minnesota Corporation, fee owner and that Community Pride Bank, a Minnesota Corporation, mortgagee of the following described property situated in the County of Anoka, State of Minnesota to wit:

The South Half of the Northeast Quarter of the Northwest Quarter of Section 27, Township 33 North, Range 24 West, Anoka County, Minnesota.

Have caused the same to be surveyed and platted as NIGHTINGALE MEADOWS, and do hereby donate and dedicate to the public use forever the lane, street and easements for drainage and utility purposes as shown on the plat.

In witness whereof said Swift Construction, Inc., a Minnesota Corporation, has caused these presents to be signed by its proper officers this 27th day of December, 2001.

SWIFT CONSTRUCTION, INC.  
Bill G. Roessler  
Bill G. Roessler - President

In witness whereof said Community Pride Bank, a Minnesota Corporation, has caused these presents to be signed by its proper officers this 28th day of December, 2001.

COMMUNITY PRIDE BANK  
John E. Post  
John E. Post - President

STATE OF MINNESOTA COUNTY OF Anoka  
The foregoing instrument was acknowledged before me this 27th day of December, 2001, by Bill G. Roessler as President, of Swift Construction, Inc., a Minnesota Corporation, on behalf of the corporation.

Jan Thomas  
Notary Public, Anoka County, Minnesota  
My commission expires 1-31-05

STATE OF MINNESOTA COUNTY OF Anoka  
The foregoing instrument was acknowledged before me this 28th day of December, 2001, by John E. Post, as President of Community Pride Bank, a Minnesota corporation, on behalf of the corporation.

Jan Thomas  
Notary Public, Anoka County, Minnesota  
My commission expires 1-31-05

STATE OF MINNESOTA COUNTY OF Anoka  
The foregoing instrument was acknowledged before me this 27th day of December, 2001, by Rodney H. Halvorson, Land Surveyor.

Blake L. Rivard  
Notary Public - Minnesota  
My Commission Expires Jan 31, 2005

The foregoing plat of NIGHTINGALE MEADOWS was approved and accepted by the City Council of Oak Grove, Minnesota at a regular meeting thereof held this 27th day of December, 2001. If applicable, the written comments and recommendations of the Commissioner of Transportation and the County Highway Engineer have been received by the City or the prescribed 30 day period has elapsed without receipt of such comments and recommendations, as provided by Minnesota Statutes, Section 505.03, Subd. 2.

CITY COUNCIL OF OAK GROVE, MINNESOTA  
By Sam Salbo Mayor  
By Maura J. Davis Clerk

I, Rodney H. Halvorson, hereby certify that I have surveyed and platted the property described on this plat as NIGHTINGALE MEADOWS; that this plat is a correct representation of the survey; that all distances are correctly shown on the plat in feet and hundredths of a foot; that all monuments will be correctly placed in the ground as shown within one year after the recording date of this plat; that the outside boundary lines are correctly designated on the plat and that there are no wetlands as defined in MS 505.02, Subd. 1 or public highways to be designated on said plat other than as shown.

Rodney H. Halvorson  
Rodney H. Halvorson, Land Surveyor  
Minnesota License No. 10947

Checked and approved this 31st day of December, 2001.  
Larry D. Halverson  
Anoka County Surveyor

I HEREBY CERTIFY THAT THE CURRENT AND DELINQUENT TAXES ON THE LANDS DESCRIBED WITHIN ARE PAID AND THE TRANSFER IS ENTERED.  
March 31, 2001  
MAURILEN J. DUSTIE  
PROPERTY TAX ADMINISTRATOR  
BY J. Roessler  
DEPUTY PROPERTY TAX ADMINISTRATOR

Receipt No 2001126201 #335.00