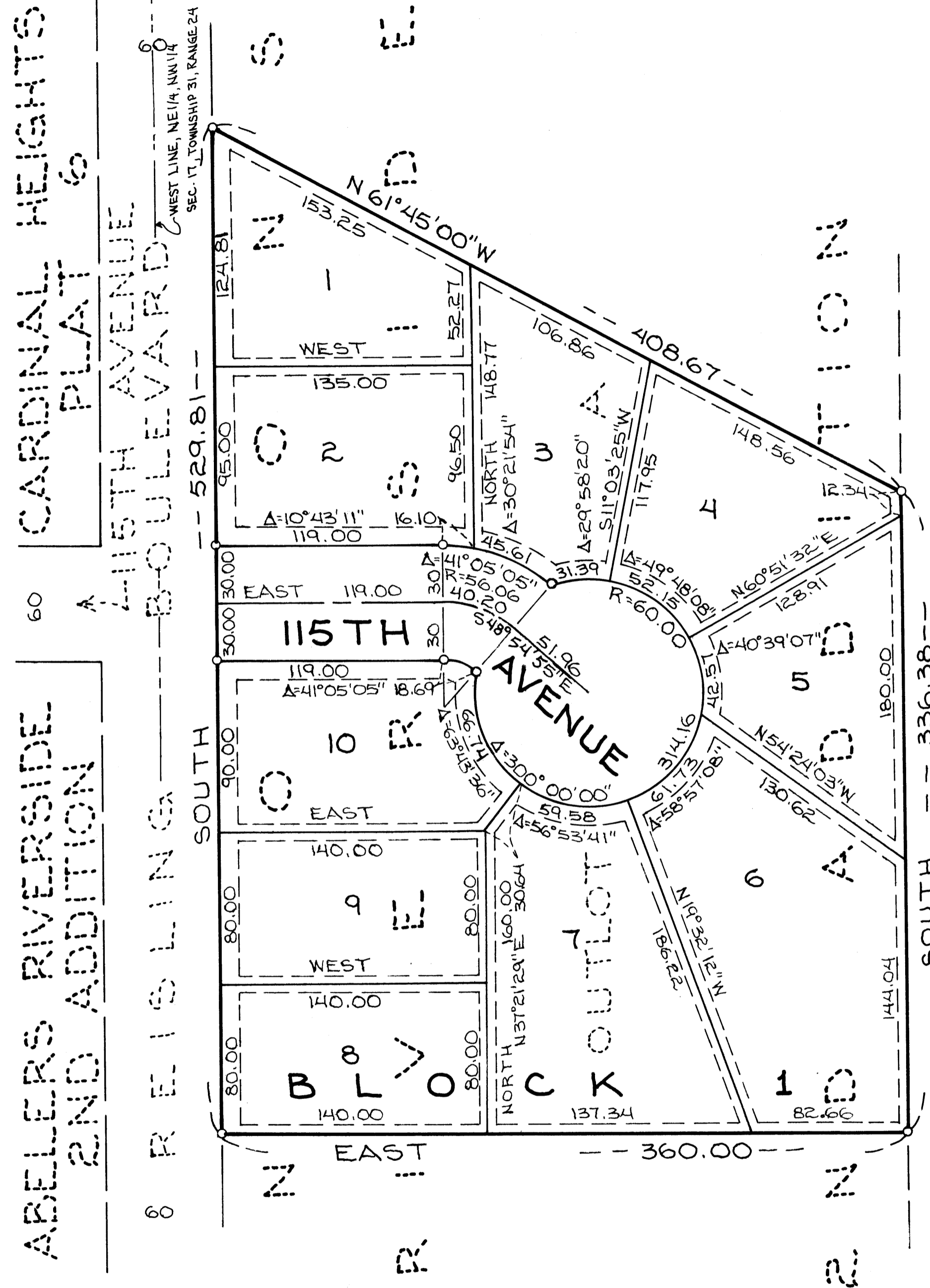


NOON'S RIVERSIDE 3RD ADDITION

CITY OF COON RAPIDS
ANOKA COUNTY
MN.



60 CARDINAL HEIGHTS PLAT 60
 60 ABELERS RIVERSIDE 2ND ADDITION
 60 PRELISLING SOUTH
 60 WEST LINE, NE 1/4, NW 1/4 SEC. 17, TOWNSHIP 31, RANGE 24

KNOW ALL PERSONS BY THESE PRESENTS: That Vernon D. Noon and Doris L. Noon, husband and wife, owners and proprietors, of the following described property situated in the State of Minnesota, County of Anoka to wit:

Outlot A, NOON'S RIVERSIDE 2ND ADDITION, as filed in the Office of the Registrar of Titles, County of Anoka,

Have caused the same to be surveyed and platted as NOON'S RIVERSIDE 3RD ADDITION and do hereby dedicate and donate to the public, for public use forever, the Avenue, and the drainage and utility easements as shown on this plat.

In witness whereof, said Vernon D. Noon and Doris L. Noon, husband and wife have caused these presents to be signed this 6 day of DECEMBER, 1985.

Vernon D. Noon
Vernon D. Noon

Doris L. Noon
Doris L. Noon

STATE OF MINNESOTA)
COUNTY OF ANOKA) The foregoing instrument was acknowledged to before me this 6TH day of DECEMBER, 1985, by Vernon D. Noon and Doris L. Noon, husband and wife.

Russell J. Kurth
Notary Public, Subeouene County, Mn.
My Commission Expires SEPTEMBER 30, 1988

I, Russell J. Kurth, do hereby certify that I have surveyed and platted the property described on this plat as NOON'S RIVERSIDE 3RD ADDITION, that this plat is a correct representation of said survey; that all distances are correctly shown in feet and hundredths of a foot; that all monuments for the guidance of future surveys have been correctly placed in the ground as shown on the plat; that all outside boundary lines are correctly shown on the plat; and that there are no wet lands or public highways to be designated other than as shown.

Russell J. Kurth
Russell J. Kurth, Land Surveyor
Minnesota Registration No. 16113

STATE OF MINNESOTA)
COUNTY OF ANOKA) The foregoing instrument was acknowledged before me this 6TH day of DECEMBER, 1985, by Russell J. Kurth, Land Surveyor.

KAREN J. KURTH
NOTARY PUBLIC—MINNESOTA
ANOKA COUNTY
My Commission Expires Feb. 13, 1991

Karen J. Kurth
Notary Public, Anoka County, Minnesota
My Commission Expires FEBRUARY 13, 1991

This plat of NOON'S RIVERSIDE 3RD ADDITION was approved by the Planning Commission of the City of Coon Rapids, Minnesota this 18th day of July, 1985.

By: Donna M. Nalue, Chairman

This plat of NOON'S RIVERSIDE 3RD ADDITION was approved by the City Council of Coon Rapids, Minnesota at a regular meeting thereof held this 17th day of December, 1985.

By: Robert B. Lewis, Mayor Attest: Lorraine M. Menzies, Clerk

This plat has been checked and approved this 11th day of February, 1986.

Roland W. Anderson
Roland W. Anderson, County Surveyor
Anoka County, Minnesota

NO DELINQUENT TAXES
AND TRANSFER ENTERED

Feb 11 1986

Ueli R. Johnson
Auditor, Anoka County

By: Shirley K.
Deputy

I HEREBY CERTIFY THAT THE TAXES
PAYABLE IN THE YEAR 1986 ON THE
LANDS DESCRIBED WITHIN ARE PAID
Donald C. Bailey by Kim Shackelford dep.
Anoka County Treasurer

148577

Office of REGISTRAR OF TITLES
STATE OF MINNESOTA
COUNTY OF ANOKA

I hereby certify that the within instrument
was filed in this office on this 11th day of
FEBRUARY, 1986 at 1:30 o'clock P.M.
Joerg Omdahl
By: Katherine Basin
Deputy Registrar of Titles