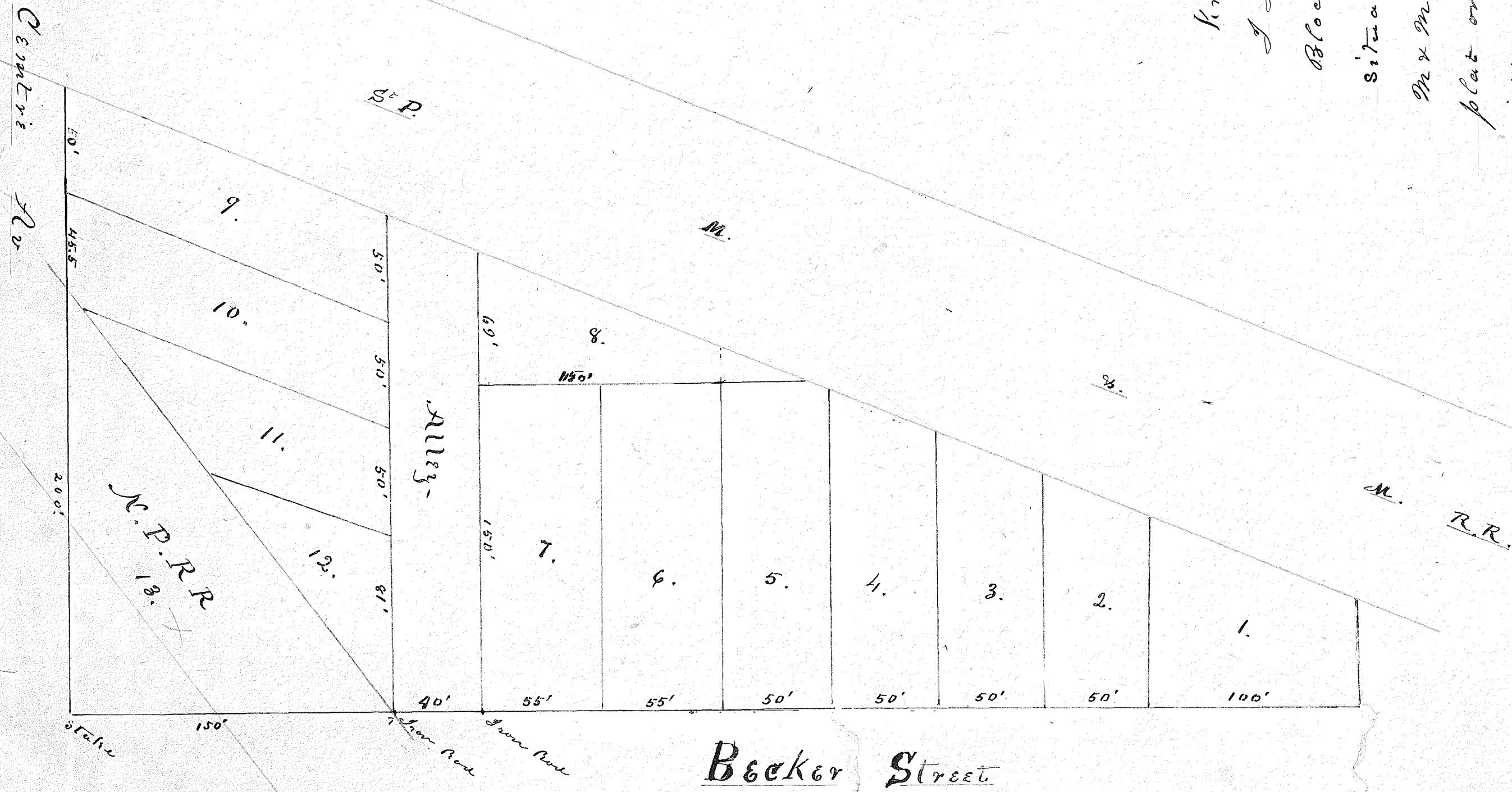


Plat of  
 J. Morels sub-division of a part of  
 Block No. 2 Woodburg's addition to  
 Anoka, surveyed & platted by  
 W. D. Cheever  
 City Surveyor  
 December 7 1883-

0 50' 100' 150'  
 The alley from Becker St to the  
 S. P. M. & M. R. R. is 20' feet wide  
 with a 10' gutter



I know all mean by these presents, that  
 I Jonas Morel proprietor of that part of  
 Block No. 2 Woodburg's addition to Anoka  
 situated and being west or south of the S.P.  
 M. & M. Rail Road as shown by the recorded  
 plat on file in the Office of the Registry of Deeds  
 within and for said county of Anoka and State of Minn  
 and have caused the same to be platted as Morels  
 sub-division of a part of Block No. 2 of Woodburg's  
 addition to Anoka

In witness whereof I have hereunto set my hand  
 this 31<sup>st</sup> day of December, A.D. 1883.  
 Jonas Morel  
 Anna J. Morel  
 more

Before me personally appeared Jonas Morel and Anna J.  
 Morel, who, acknowledged that they signed the above of their own free will  
 and deed and for the uses & purposes above expressed  
 My Commission Expires Dec 31 1883  
 W. J. Miller  
 City Clerk

City of Anoka  
 County of Anoka  
 State of Minnesota  
 At a meeting of the City Council  
 of the City of Anoka, held on the 20<sup>th</sup> day of February  
 A.D. 1884, the above map, being a subdivision of a part of  
 lot No. 2 in Woodburg's addition, known as J. Morel's  
 subdivision, was approved.  
 Given under my hand and seal of the  
 City of Anoka this 26<sup>th</sup> day of February  
 A.D. 1884.  
 W. J. Miller  
 City Clerk

Register of Deeds Office  
 Charles County, Minn. I do hereby certify that this  
 plat was filed in this Office for Record April 10<sup>th</sup> 1884  
 and was duly recorded in Part. O. of Town Plat.  
 Witness my hand and official seal this  
 the 15<sup>th</sup> day of April A.D. 1884  
 C. D. Gless  
 Register of Deeds

