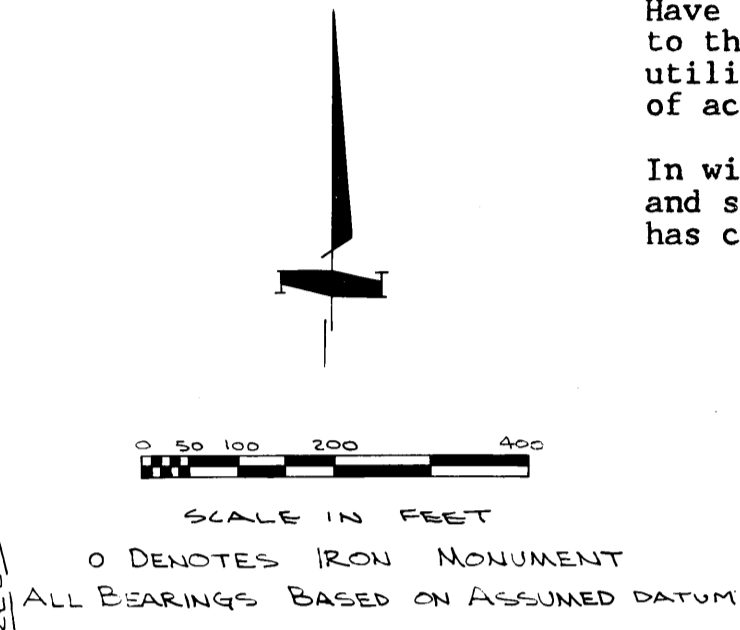
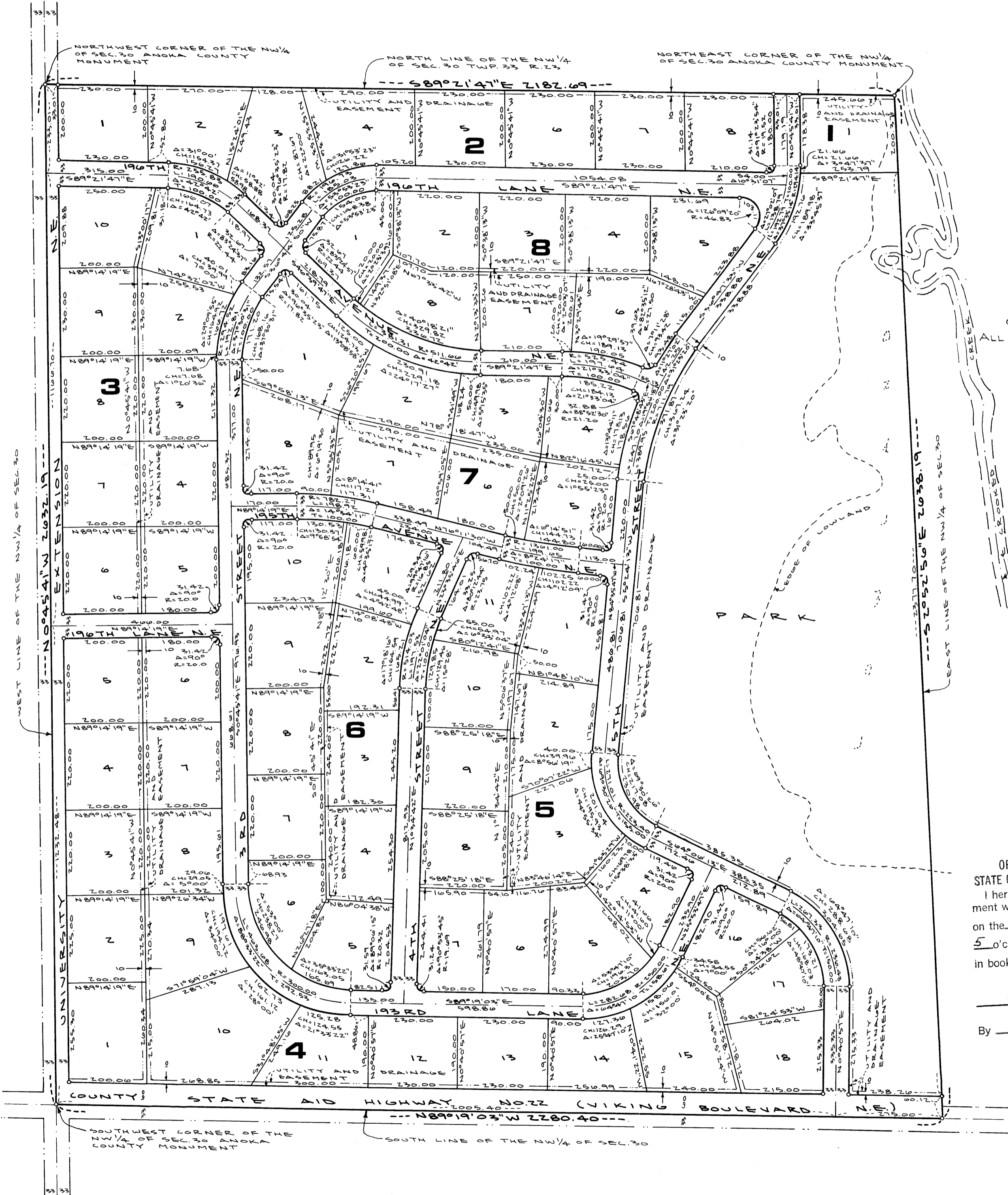


NORSELAND MANOR

MEYER-ROHLIN INC.
ENGINEERS & LAND SURVEYORS

CITY OF EAST BETHEL, ANOKA COUNTY, MINNESOTA



KNOW ALL MEN BY THESE PRESENTS: That Thomas F. Haywood and Eva C. Haywood, husband and wife, fee owners, and R & O Sales, Inc., a Minnesota Corporation, contract purchaser of the following described property situated in the State of Minnesota, County of Anoka to wit:

The NW $\frac{1}{4}$ of Section 30, Township 33, Range 23.

Have caused the same to be surveyed and platted as NORSELAND MANOR and do hereby donate and dedicate to the public for public use forever the Park, Extension, Lanes, Avenues, Streets, Boulevard and utility and drainage easements as shown on the plat. Also dedicating to the County of Anoka the right of access to County State Aid Highway Number 22 from Lots 1, 10, 11, 12, 13, 14, 15 and 18, Block 4.

In witness whereof said Thomas F. Haywood and Eva C. Haywood, husband and wife, have set their hands and seals this 18 day of November, 1974, A.D., and said R & O Sales, Inc., a Minnesota Corporation, has caused these presents to be signed by its proper officers this 18 day of November, 1974, A.D.

Signed
Thomas F. Haywood Thomas F. Haywood
Eva C. Haywood Eva C. Haywood
 R & O SALES, INC.
Joseph J. Omerza Joseph J. Omerza
 President
Joseph E. Campion Joseph E. Campion
 Secretary

State of Minnesota
County of Hennepin

The foregoing instrument was acknowledged before me this 18 day of November, 1974, A.D. by Thomas F. Haywood and Eva C. Haywood, husband and wife.

Peter Campion
 Notary Public, Hennepin County, Minnesota
 My commission expires _____

State of Minnesota
County of Hennepin

The foregoing instrument was acknowledged before me this 18 day of November, 1974, A.D. by Joseph J. Omerza, President, and Joseph E. Campion, Secretary, of R & O Sales, Inc., a Minnesota Corporation, on behalf of the corporation.

Peter Campion
 Notary Public, Hennepin County, Minnesota
 My commission expires _____

I hereby certify that I have surveyed and platted the property described in this plat as NORSELAND MANOR; that this plat is a correct representation of said survey; that the distances are correctly shown on the plat in feet and hundredths of a foot; that all monuments have been correctly placed in the ground as shown on the plat; and that the outside boundary lines are correctly designated on the plat.

Robert L. Rohlin
 Robert L. Rohlin, Registered Land Surveyor
 Minnesota Registration Number 7439

State of Minnesota
County of Wright

The foregoing instrument was acknowledged before me this 6th day of November, 1974, A.D., by Robert L. Rohlin, Registered Land Surveyor.

Jerry W. Under
 Notary Public, Wright County, Minnesota
 My commission expires April 11, 1980

The plat of NORSELAND MANOR was approved and accepted by resolution of the City Planning Commission of East Bethel, Minnesota at a Regular meeting thereof held this 26th day of November, 1974, A.D.

City Planning Commission of East Bethel, Minnesota
 BY Neal S. Lush
 BY Phyllis E. Dennis

The plat of NORSELAND MANOR was approved and accepted by resolution of the City Council of East Bethel, Minnesota at a Special meeting thereof held this 1st day of October, 1976, A.D.

City Council of East Bethel, Minnesota
 BY Judy A. Beusie, Mayor
 BY Ernie Jackson, Clerk

This plat has been checked and approved this 8th day of October, 1976, A.D.

BY Roland W. Anderson
 Roland W. Anderson, Anoka County Surveyor

454510

OFFICE OF COUNTY RECORDER
 STATE OF MINNESOTA, COUNTY OF ANOKA
 I hereby certify that the within instrument was filed in this office for record on the 06th of October, 1976, A.D., 19
5 o'clock P.M., and was duly recorded in book 219 page 9

Dea J. Omerza
 County Recorder
 By Joan Nevea
 Deputy

Oct 8 1976
Charles R. Johnson
 Auditor, Anoka Co.
John Sheard
 Deputy