

NORTH MEADOWS SECOND ADDITION

CITY OF BLAINE
COUNTY OF ANOKA
SEC. 14, TWP. 31, RGE. 23

KNOW ALL PERSONS BY THESE PRESENTS: That North Meadows LLC, a Minnesota limited liability company, owner of the following described property:

Outlot B, Outlot D, Outlot E, NORTH MEADOWS, according to the recorded plat there of, Anoka County, Minnesota
(Torrens Property)

And

Outlot I, NORTH MEADOWS, according to the recorded plat thereof, Anoka County, Minnesota.
(Abstract Property)

Has caused the same to be surveyed and platted as NORTH MEADOWS SECOND ADDITION and does hereby dedicate to the public for public use the public ways and the drainage and utility easements as shown on this plat.

In witness whereof said North Meadows LLC, a Minnesota limited liability company, has caused these presents to be signed by its proper officer this 15th day of June, 2021.

NORTH MEADOWS LLC
By: WELLINGTON PROPERTIES LLC, its Manager

Stephen B. Wellington, Jr.
Stephen B. Wellington, Jr., Chief Manager

STATE OF Minnesota
COUNTY OF Ramsey

This instrument was acknowledged before me on June 15, 2021 by Stephen B. Wellington, Jr., Chief Manager of Wellington Properties LLC, a Minnesota limited liability company, manager of North Meadows LLC, a Minnesota limited liability company.

Alison Newton (Signed)
Alison Newton (Printed)
Notary Public, Dakota County, MN
My commission expires 1-31-2026

I Thomas R. Balluff do hereby certify that this plat was prepared by me or under my direct supervision; that I am a duly Licensed Land Surveyor in the State of Minnesota; that this plat is a correct representation of the boundary survey; that all mathematical data and labels are correctly designated on this plat; that all monuments depicted on this plat have been, or will be correctly set within one year; that all water boundaries and wet lands, as defined in Minnesota Statutes, Section 505.01, Subd. 3, as of the date of this certificate are shown and labeled on this plat; and all public ways are shown and labeled on this plat.

Dated this 15th day of JUNE, 2021.

Thomas R. Balluff
Thomas R. Balluff, Licensed Land Surveyor
Minnesota License No. 40361

STATE OF Minnesota
COUNTY OF Anoka

This instrument was acknowledged before me on June 15, 2021 by Thomas R. Balluff.

Cynthia J. Morin (Signed)
Cynthia J. Morin (Printed)
Notary Public, Hennepin County, Minnesota
My commission expires January 31, 2025

CITY COUNCIL, CITY OF BLAINE, MINNESOTA

This plat of NORTH MEADOWS SECOND ADDITION was approved and accepted by the City Council of the City of Blaine, Minnesota at a regular meeting thereof held this 3rd day of May, 2021, and said plat is in compliance with the provisions of Minnesota Statutes, Section 505.03, Subd. 2.

CITY COUNCIL, CITY OF BLAINE, MINNESOTA
By: [Signature], Mayor
By: [Signature], Clerk

COUNTY SURVEYOR

I hereby certify that in accordance with Minnesota Statutes, Section 505.021, Subd. 11, this plat has been reviewed and approved this 29th day of June, 2021.

By: David M. Ziegmeier
David M. Ziegmeier
Anoka County Surveyor

COUNTY AUDITOR/TREASURER

Pursuant to Minnesota Statutes, Section 505.021, Subd. 9, taxes payable in the year 2021 on the land hereinbefore described have been paid. Also, pursuant to Minnesota Statutes, Section 272.12, there are no delinquent taxes and transfer entered this 29 day of June, 2021.

Pamela J LeBlanc
Property Tax Administrator
By: Marcia Earnest, Deputy

COUNTY RECORDER/REGISTRAR OF TITLES

County of Anoka, State of Minnesota

I hereby certify that this plat of NORTH MEADOWS SECOND ADDITION was filed in the office of the County Recorder/Registrar of Titles for public record on this 29 day of June, 2021, at 2:52 o'clock P.M. and was duly recorded as Document Numbers 2325313.002 / 590017.002.

Pamela J LeBlanc
County Recorder/Registrar of Titles
By: Marcia Earnest, Deputy

COUNTY RECORDER/REGISTRAR OF TITLES

County of Anoka, State of Minnesota

I hereby certify that this plat of NORTH MEADOWS SECOND ADDITION was filed in the office of the County Recorder/Registrar of Titles for public record on this 29 day of June, 2021, at 2:53 o'clock P.M. and was duly recorded as Document Number 590017.002.

Pamela J LeBlanc
County Recorder/Registrar of Titles
By: Marcia Earnest, Deputy

\$56 / \$56

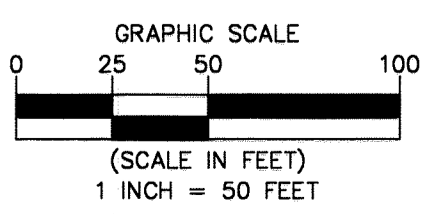
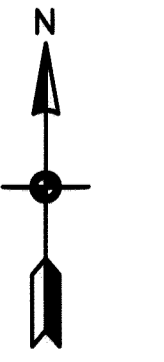
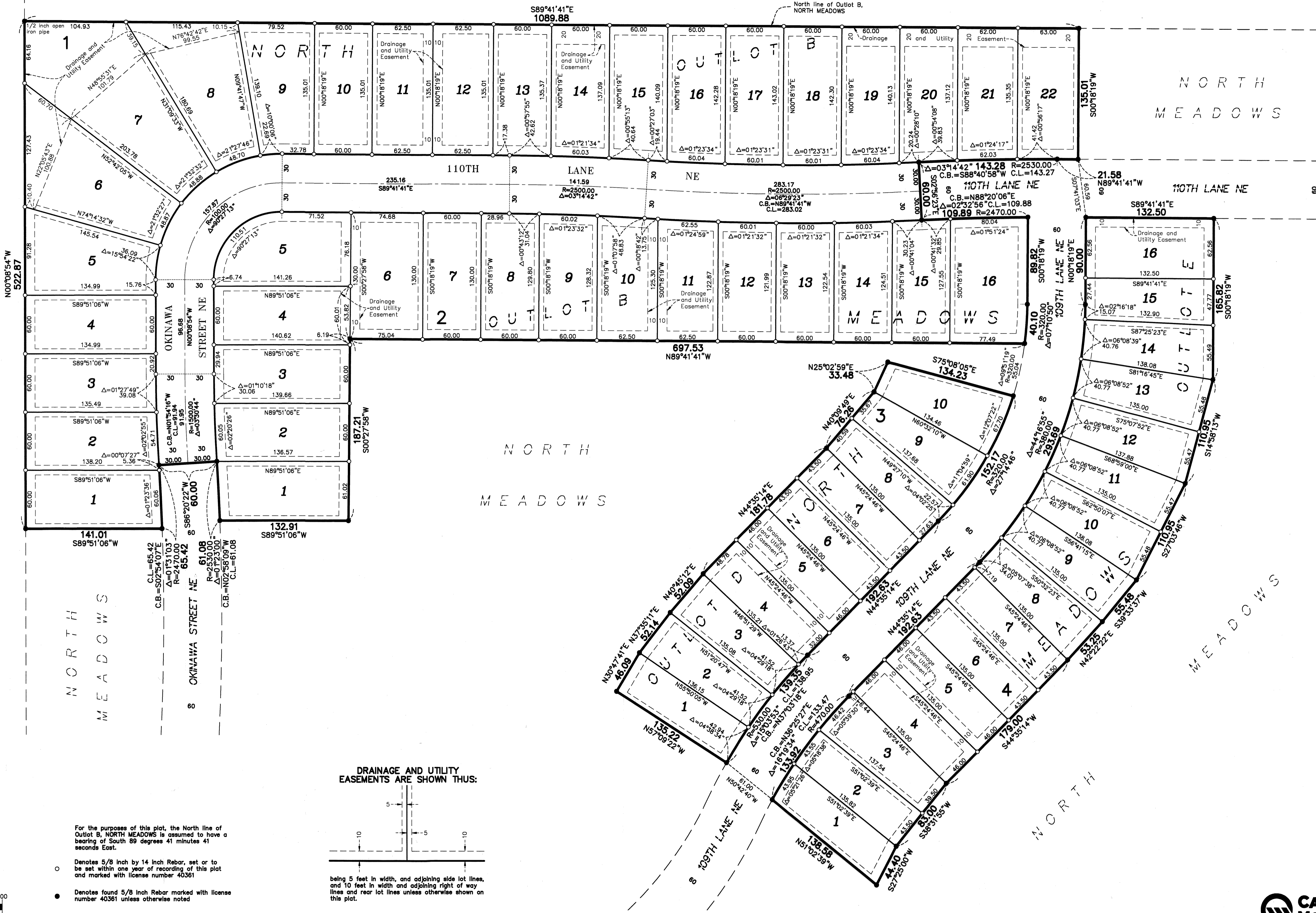


NORTH MEADOWS SECOND ADDITION

CITY OF BLAINE
COUNTY OF ANOKA
SEC. 14, TWP. 31, RGE. 23

SUNRISE OAKS

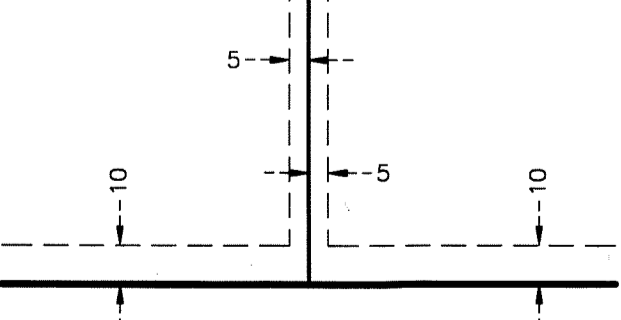
SOUTH OAKS



For the purposes of this plot, the North line of Outlot B, NORTH MEADOWS is assumed to have a bearing of South 89 degrees 41 minutes 41 seconds East.

- Denotes 5/8 inch by 14 inch Rebar, set or to be set within one year of recording of this plot and marked with license number 40361
- Denotes found 5/8 inch Rebar marked with license number 40361 unless otherwise noted

DRAINAGE AND UTILITY EASEMENTS ARE SHOWN THIS:

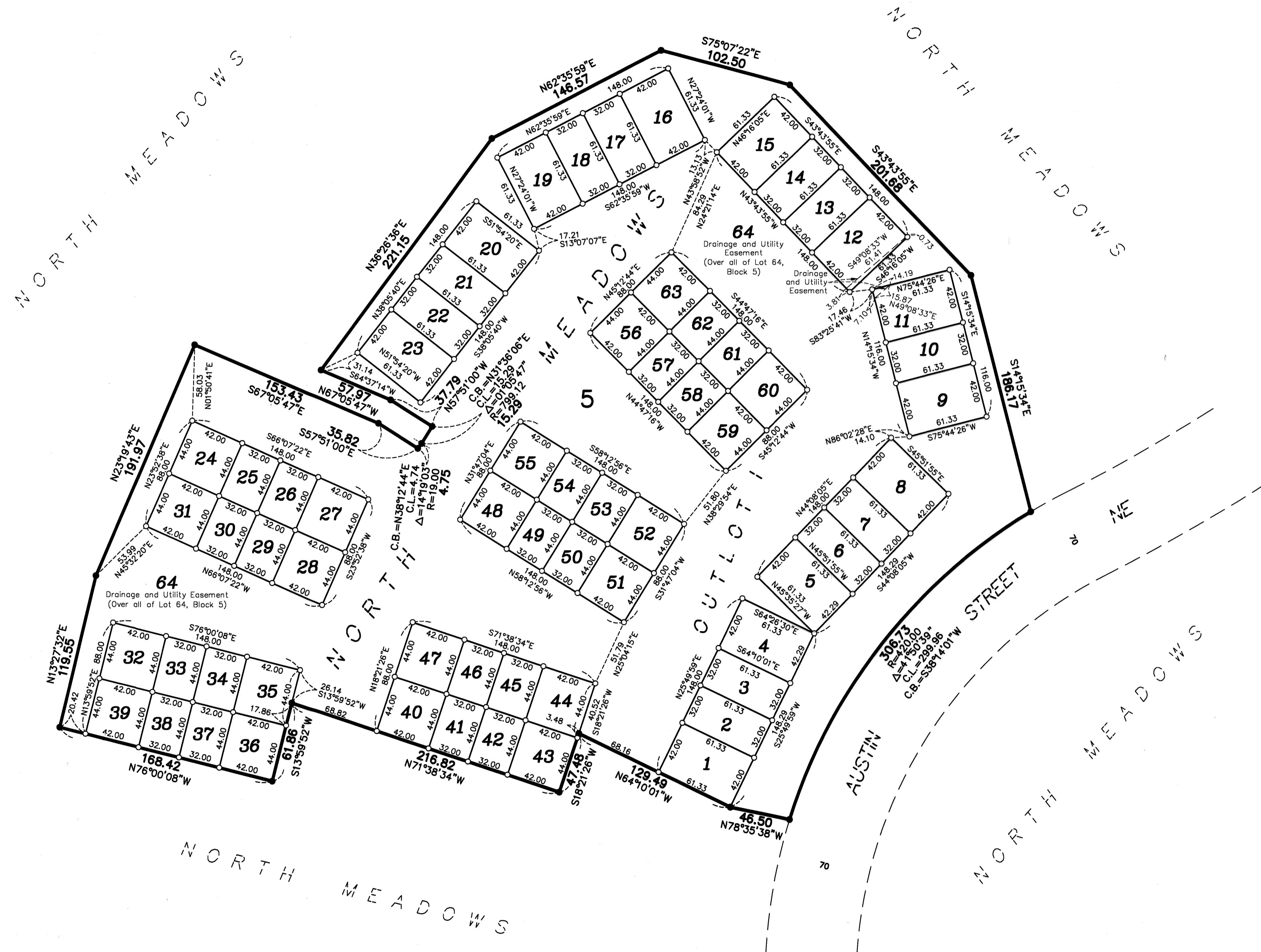


being 5 feet in width, and adjoining side lot lines, and 10 feet in width and adjoining right of way lines and rear lot lines unless otherwise shown on this plot.

NORTH MEADOWS SECOND ADDITION

CITY OF BLAINE
COUNTY OF ANOKA
SEC. 14, TWP. 31, RGE. 23

CORRECTED PLAT
OF SANCTUARY
PRESERVE



For the purposes of this plat, the North line of Outlot B, NORTH MEADOWS is assumed to have a bearing of South 89 degrees 41 minutes 41 seconds East.

- Denotes 5/8 inch by 14 inch Rebar, set or to be set within one year of recording of this plat and marked with license number 40361
- Denotes found 5/8 inch Rebar marked with license number 40361 unless otherwise noted

