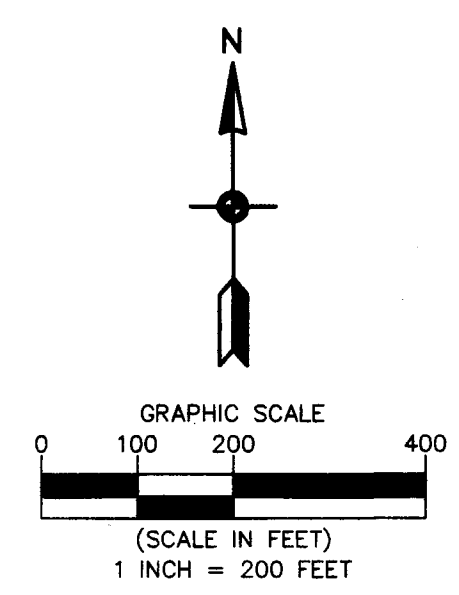


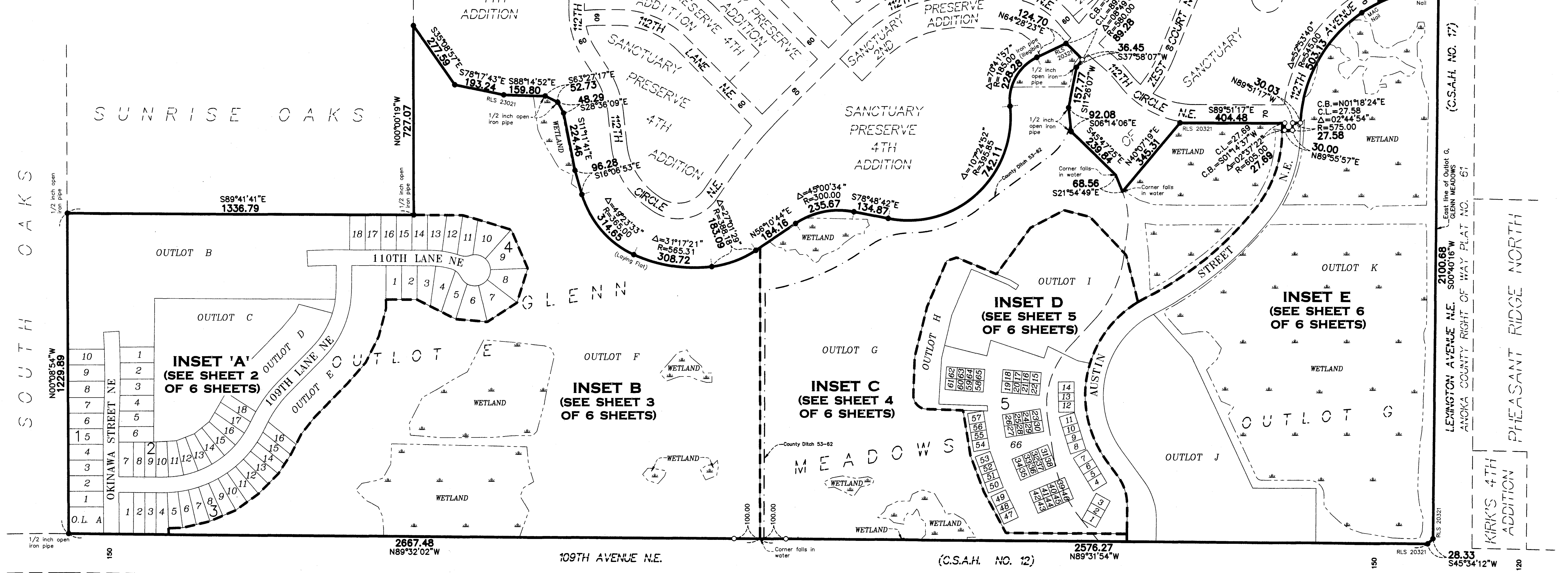
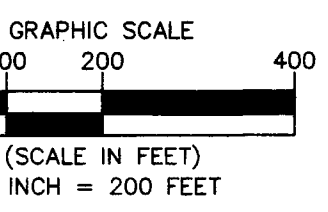
NORTH MEADOWS

CITY OF BLAINE
COUNTY OF ANOKA
SEC. 14, TWP. 31, RGE. 23



For the purposes of this plat, the East line of Outlot G, GLENN MEADOWS is assumed to have a bearing of South 00 degrees 40 minutes 16 seconds West.

- Denotes 5/8 inch by 14 inch Rebar, set or to be set within one year of recording of this plat and marked with license number 40361
- Denotes found 1/2 inch Iron Pipe marked with Cap No. 20595 unless otherwise noted
- ▭ Denotes Wetlands that were provided digitally by the Rice Creek Watershed District delineated in 2015.



KNOW ALL PERSONS BY THESE PRESENTS: That North Meadows LLC, a Minnesota limited liability company, owner of the following described property:

Outlot E, GLENN MEADOWS, Anoka County, Minnesota (Torrens and Abstract Property)
The torrens portion thereof being described as follows:
Outlot E, GLENN MEADOWS, except that part embraced within the East One-half of the South One-half of Section 14, Township 31, Range 23, Anoka County, Minnesota.
And
Outlot G, GLENN MEADOWS, Anoka County, Minnesota. (Abstract Property)

Has caused the same to be surveyed and platted as NORTH MEADOWS and does hereby dedicate to the public for public use the public ways and the drainage and utility easements as shown on this plat.
In witness whereof said North Meadows LLC, a Minnesota limited liability company, has caused these presents to be signed by its proper officer this 26th day of August, 2020.

NORTH MEADOWS LLC
By: Stephen B. Wellington, Jr.
Stephen B. Wellington, Jr., Chief Manager

STATE OF MINNESOTA
COUNTY OF RAMSEY
This instrument was acknowledged before me on August 26, 2020 by Stephen B. Wellington, Jr., Chief Manager of Wellington Properties LLC, a Minnesota limited liability company, manager of North Meadows LLC, a Minnesota limited liability company.

Beth Hurling (Signed)
Beth Hurling (Printed)
Notary Public, Washington County, MN
My commission expires 1-31-23

I, Thomas R. Balluff do hereby certify that this plat was prepared by me or under my direct supervision; that I am a duly Licensed Land Surveyor in the State of Minnesota; that this plat is a correct representation of the boundary survey; that all mathematical data and labels are correctly designated on this plat; that all monuments depicted on this plat have been, or will be correctly set within one year; that all water boundaries and wet lands, as defined in Minnesota Statutes, Section 505.01, Subd. 3, as of the date of this certificate are shown and labeled on this plat; and all public ways are shown and labeled on this plat.

Dated this 20th day of August, 2020
Thomas R. Balluff
Thomas R. Balluff, Licensed Land Surveyor
Minnesota License No. 40361

STATE OF Minnesota
COUNTY OF Anoka
This instrument was acknowledged before me on August 20th, 2020 by Thomas R. Balluff.

Cynthia S. Merical (Signed)
Cynthia S. Merical (Printed)
Notary Public, Hennepin County, Minnesota
My commission expires January 31, 2025

CITY COUNCIL, CITY OF BLAINE, MINNESOTA
This plat of NORTH MEADOWS was approved and accepted by the City Council of the City of Blaine, Minnesota at a regular meeting thereof held this 20th day of August, 2020 and said plat is in compliance with the provisions of Minnesota Statutes, Section 505.03, Subd. 2.

CITY COUNCIL, CITY OF BLAINE, MINNESOTA
By: [Signature] Mayor
By: [Signature] Clerk

COUNTY SURVEYOR
I hereby certify that in accordance with Minnesota Statutes, Section 505.021, Subd. 11, this plat has been reviewed and approved this 29th day of September, 2020

By: Charles F. Gitzen
Charles F. Gitzen
Anoka County Surveyor

COUNTY AUDITOR/TREASURER
Pursuant to Minnesota Statutes, Section 505.021, Subd. 9, taxes payable in the year 2020 on the land hereinbefore described have been paid. Also, pursuant to Minnesota Statutes, Section 272.12, there are no delinquent taxes and transfer entered this 29 day of September, 2020.

Pamela J LeBlanc
Pamela J LeBlanc
Property Tax Administrator
By: [Signature] Deputy

COUNTY RECORDER/REGISTRAR OF TITLES
County of Anoka, State of Minnesota
I hereby certify that this plat of NORTH MEADOWS was filed in the office of the County Recorder/Registrar of Titles for public record on this 29 day of September, 2020 at 01:57 o'clock P.M. and was duly recorded as Document Number 578638.012

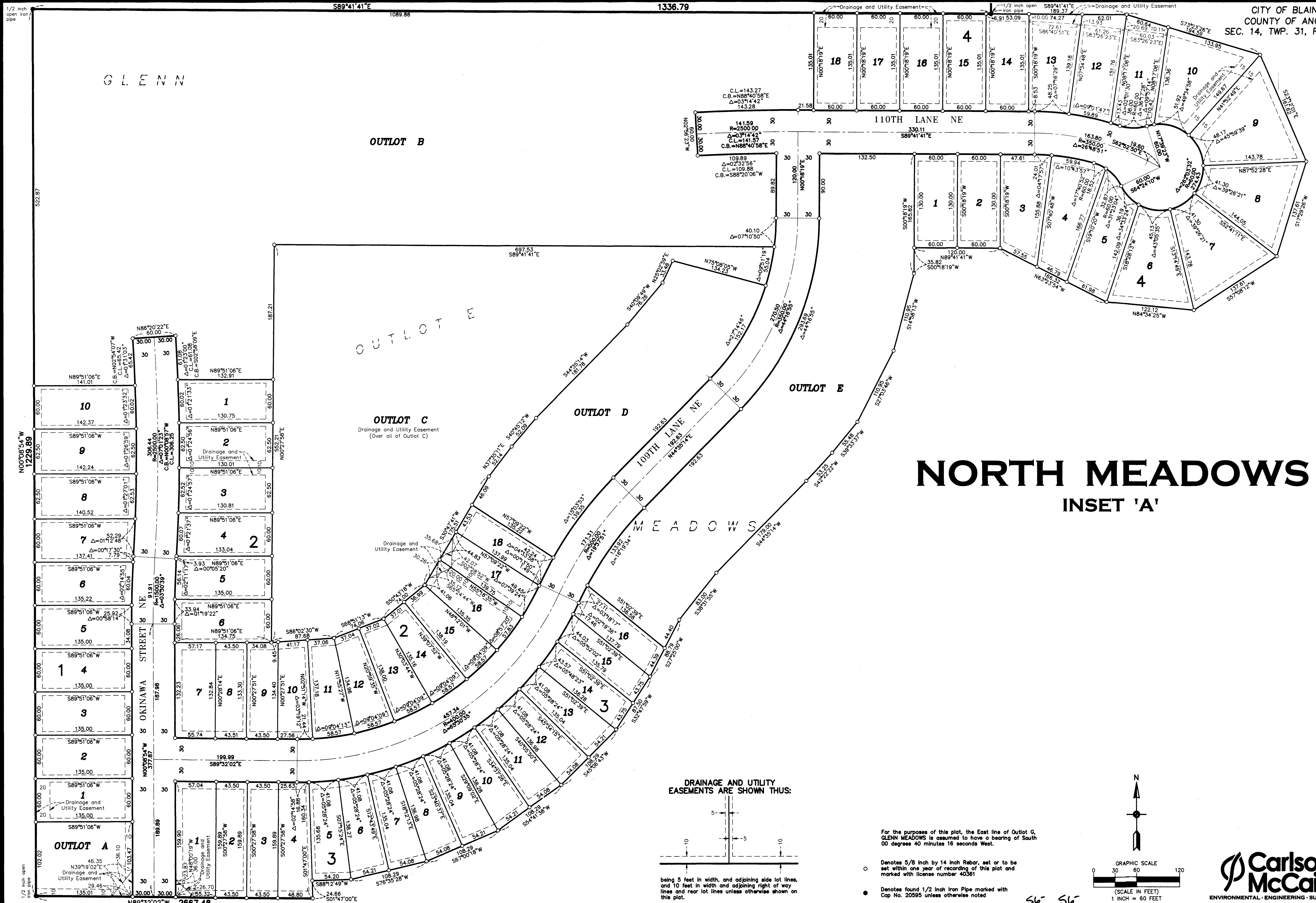
Pamela J LeBlanc
Pamela J LeBlanc
County Recorder/Registrar of Titles
By: [Signature] Deputy

COUNTY RECORDER/REGISTRAR OF TITLES
County of Anoka, State of Minnesota
I hereby certify that this plat of NORTH MEADOWS was filed in the office of the County Recorder/Registrar of Titles for public record on this 29 day of September, 2020 at 01:57 o'clock P.M. and was duly recorded as Document Number 578638.014

Pamela J LeBlanc
Pamela J LeBlanc
County Recorder/Registrar of Titles
By: [Signature] Deputy

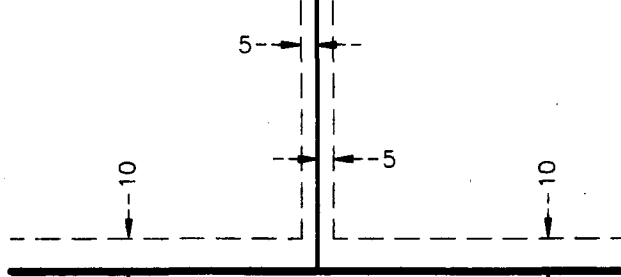
\$56- \$56-





NORTH MEADOWS INSET 'A'

DRAINAGE AND UTILITY EASEMENTS ARE SHOWN THUS:

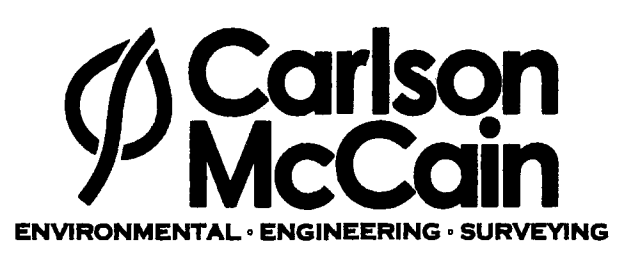
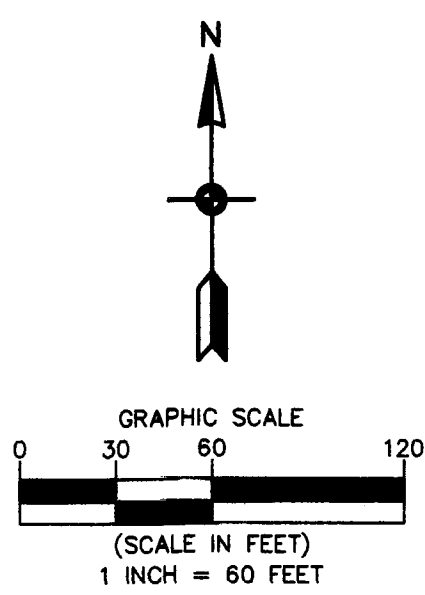


being 5 feet in width, and adjoining side lot lines, and 10 feet in width and adjoining right of way lines and rear lot lines unless otherwise shown on this plat.

For the purposes of this plat, the East line of Outlot C, GLENN MEADOWS is assumed to have a bearing of South 00 degrees 40 minutes 16 seconds West.

- Denotes 5/8 inch by 14 inch Rebar, set or to be set within one year of recording of this plat and marked with license number 40361
- Denotes found 1/2 inch Iron Pipe marked with Cap No. 20595 unless otherwise noted


56 56

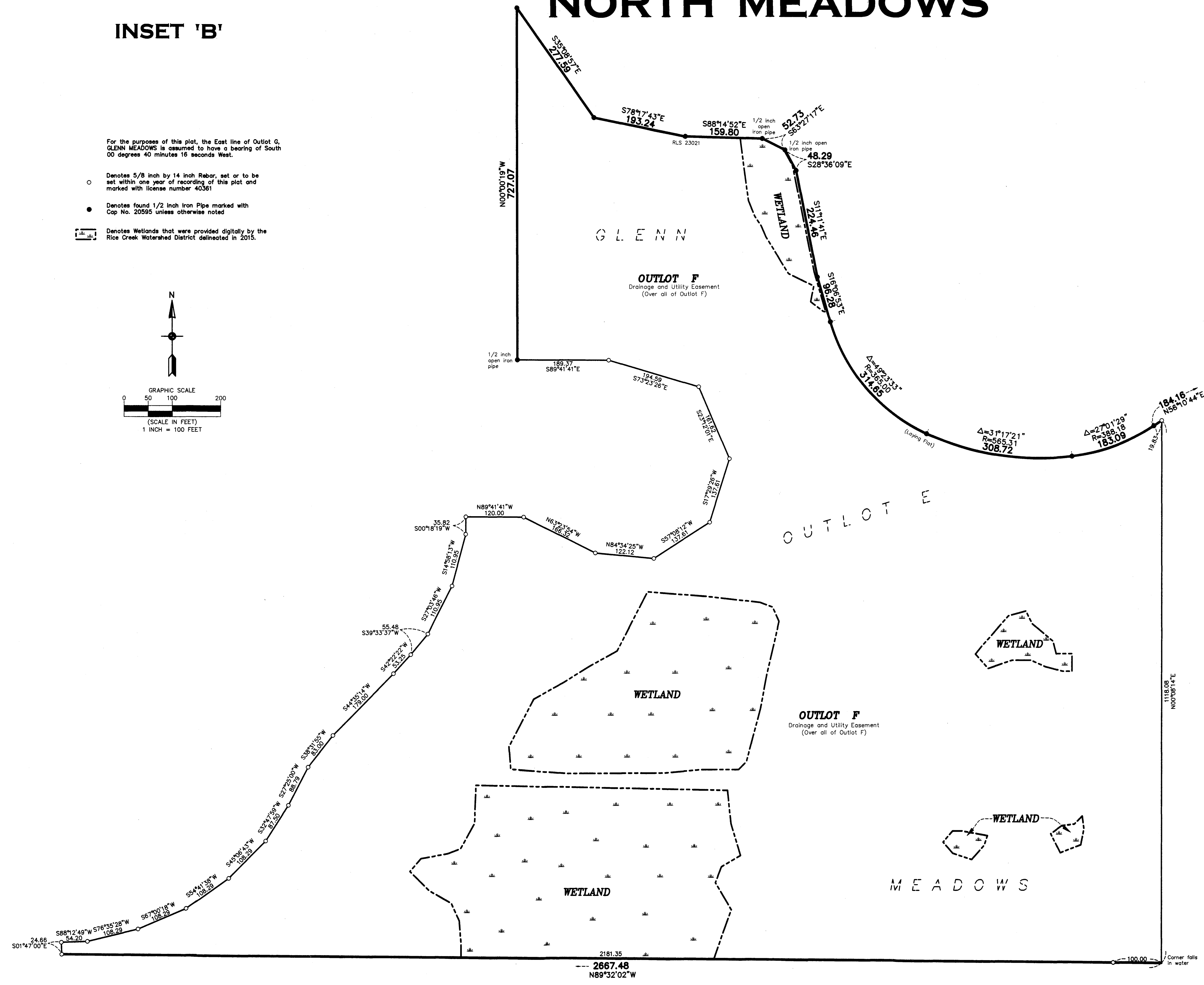
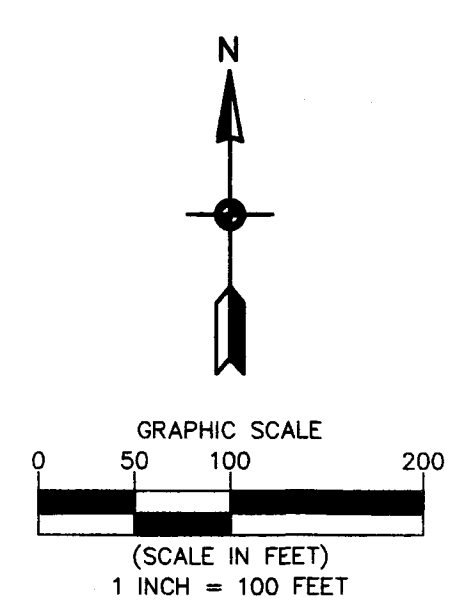


NORTH MEADOWS

INSET 'B'

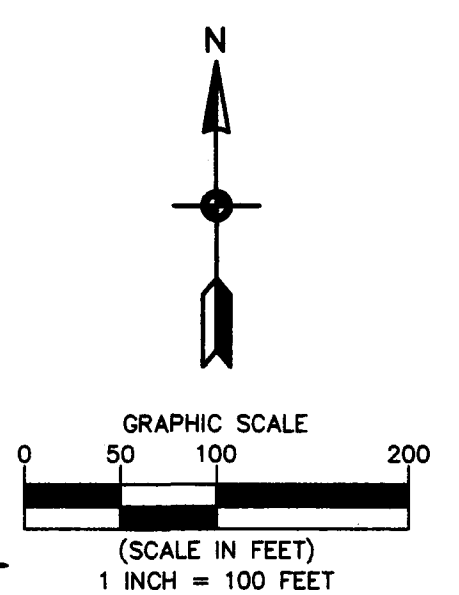
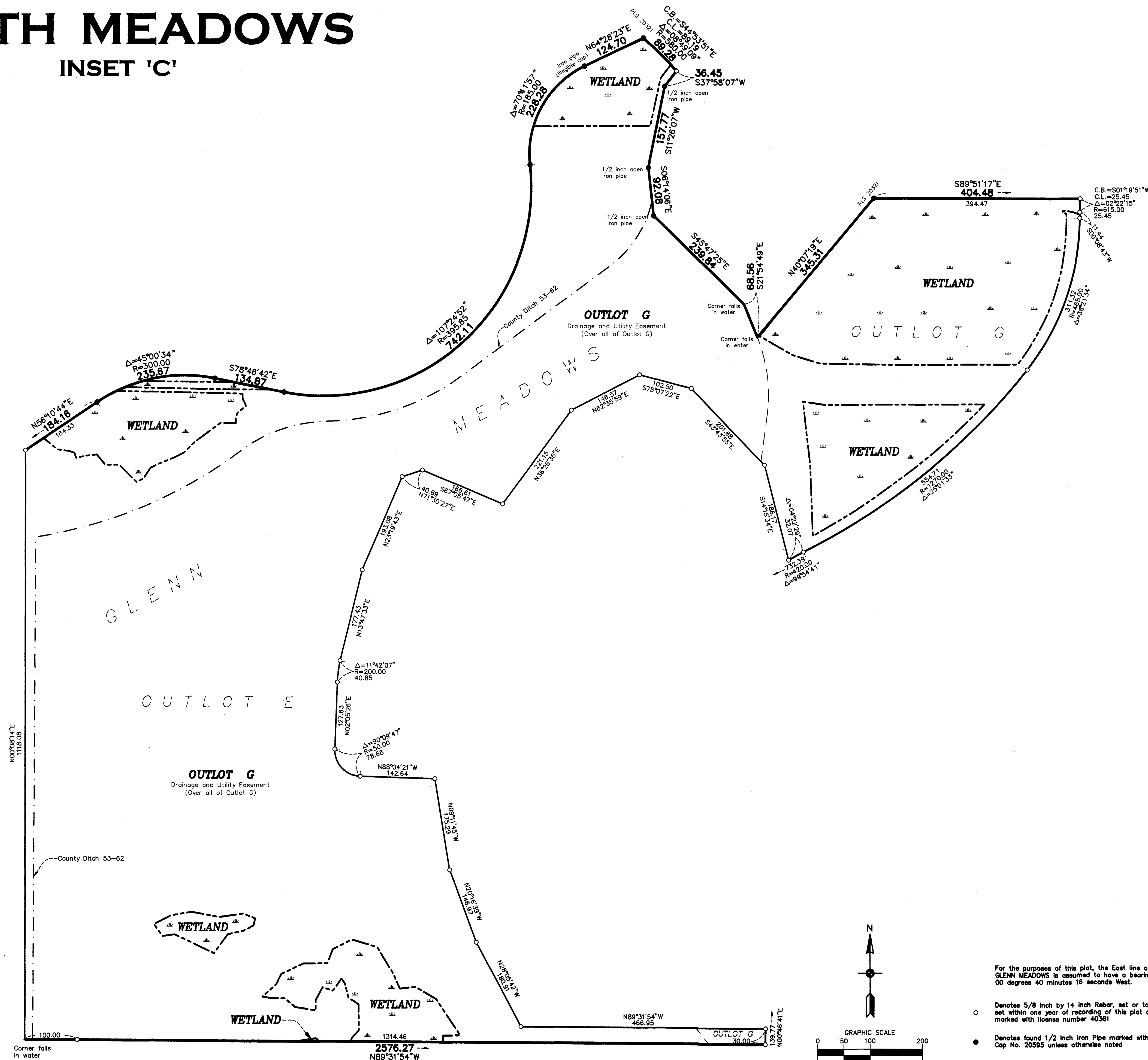
For the purposes of this plat, the East line of Outlot G, GLENN MEADOWS is assumed to have a bearing of South 00 degrees 40 minutes 16 seconds West.

- Denotes 5/8 inch by 14 inch Rebar, set or to be set within one year of recording of this plat and marked with license number 40361
- Denotes found 1/2 inch Iron Pipe marked with Cop No. 20595 unless otherwise noted
-  Denotes Wetlands that were provided digitally by the Rice Creek Watershed District delineated in 2015.



NORTH MEADOWS

INSET 'C'



For the purposes of this plat, the East line of Outlot G, GLENN MEADOWS is assumed to have a bearing of South 00 degrees 40 minutes 18 seconds West.

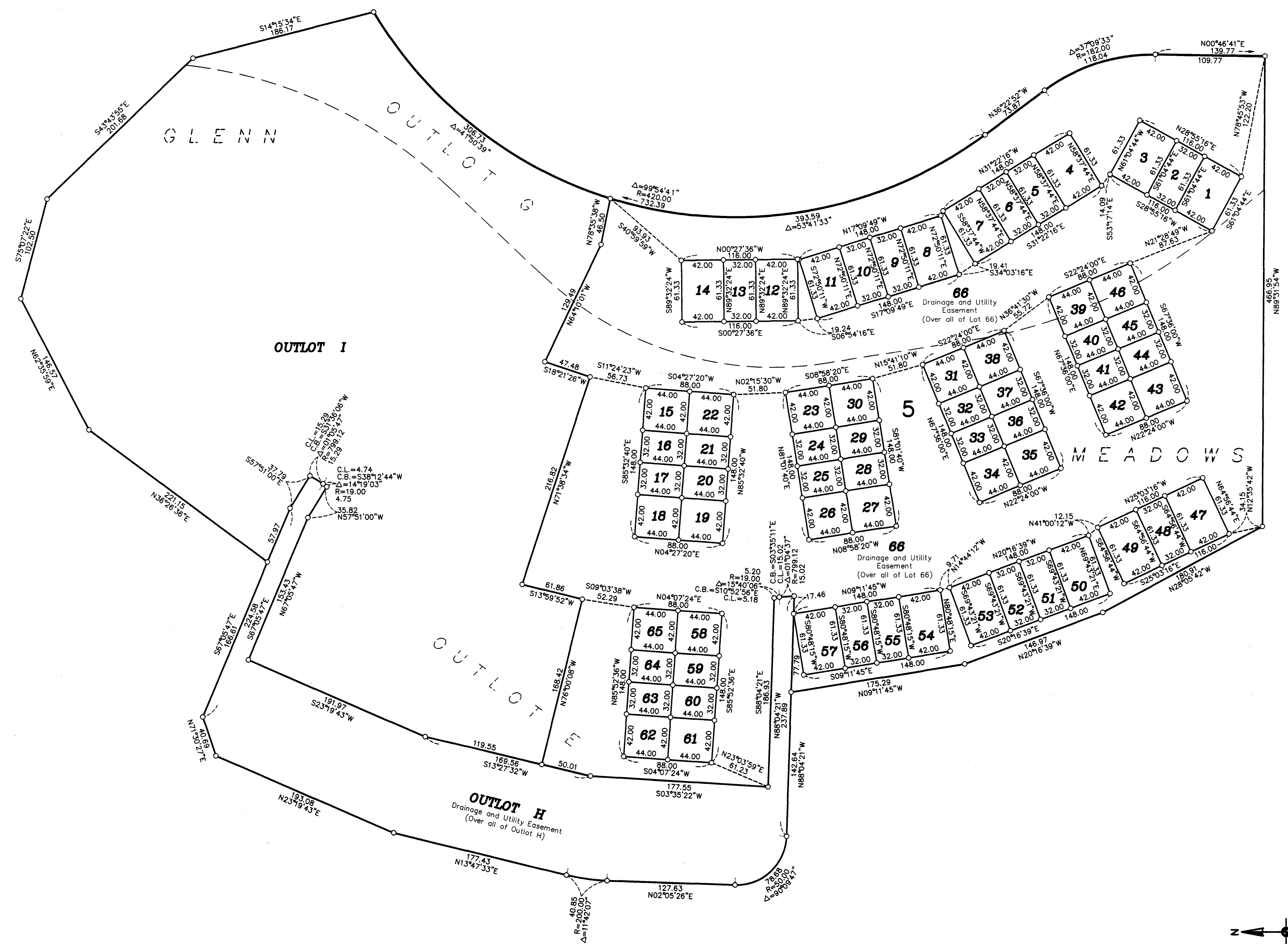
- Denotes 5/8 inch by 14 inch Rebar, set or to be set within one year of recording of this plat and marked with license number 40361
- Denotes found 1/2 inch Iron Pipe marked with Cap No. 20595 unless otherwise noted
- ▭ Denotes Wetlands that were provided digitally by the Rice Creek Watershed District delineated in 2015.



56-56

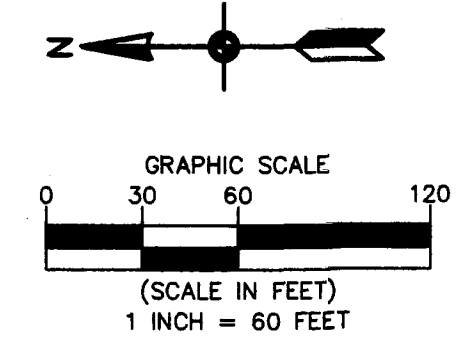
NORTH MEADOWS

INSET 'D'



For the purposes of this plat, the East line of Outlot G, GLENN MEADOWS is assumed to have a bearing of South 00 degrees 40 minutes 16 seconds West.

○ Denotes 5/8 inch by 14 inch Rebar, set or to be set within one year of recording of this plat and marked with license number 40361

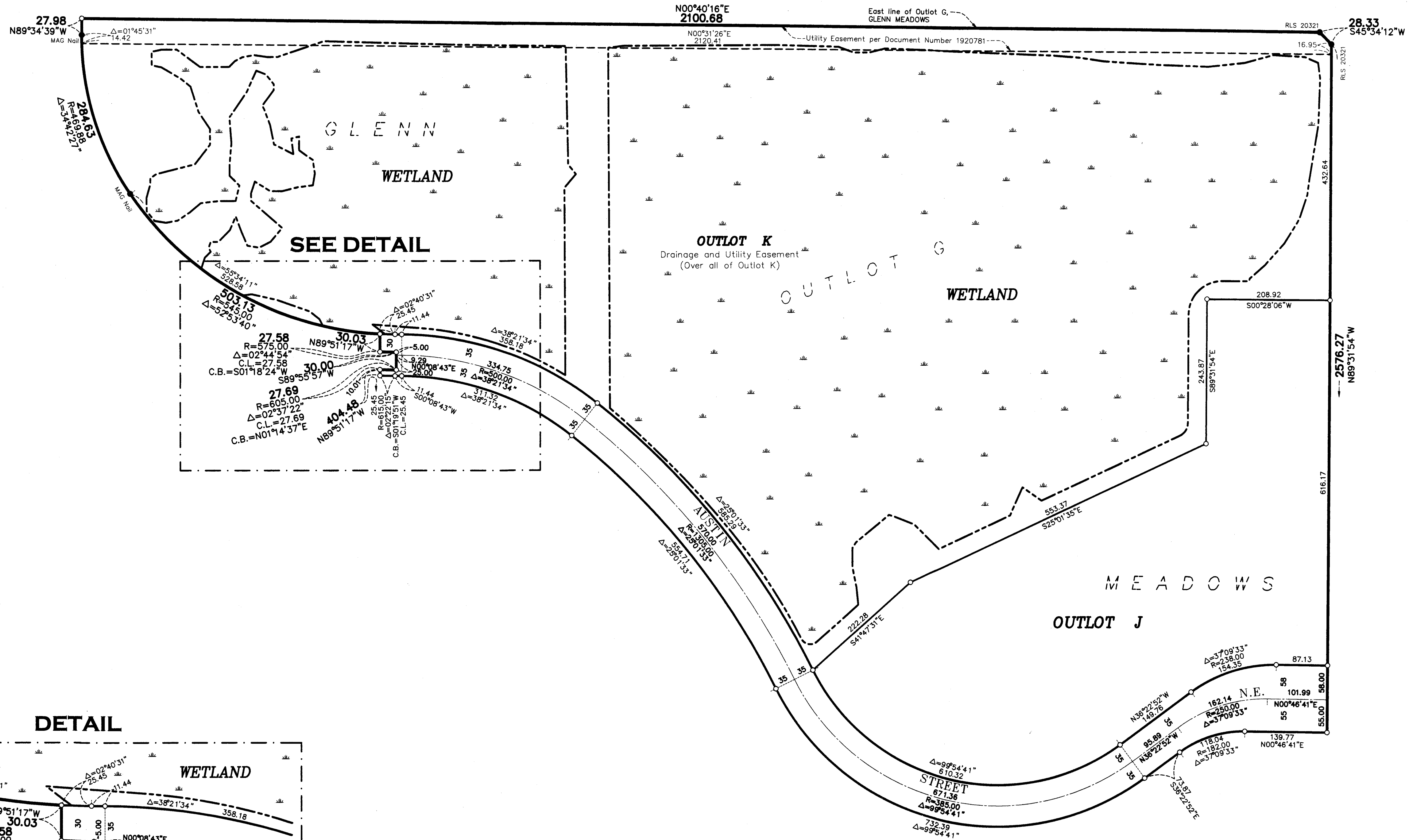


Carlson McCain
ENVIRONMENTAL · ENGINEERING · SURVEYING

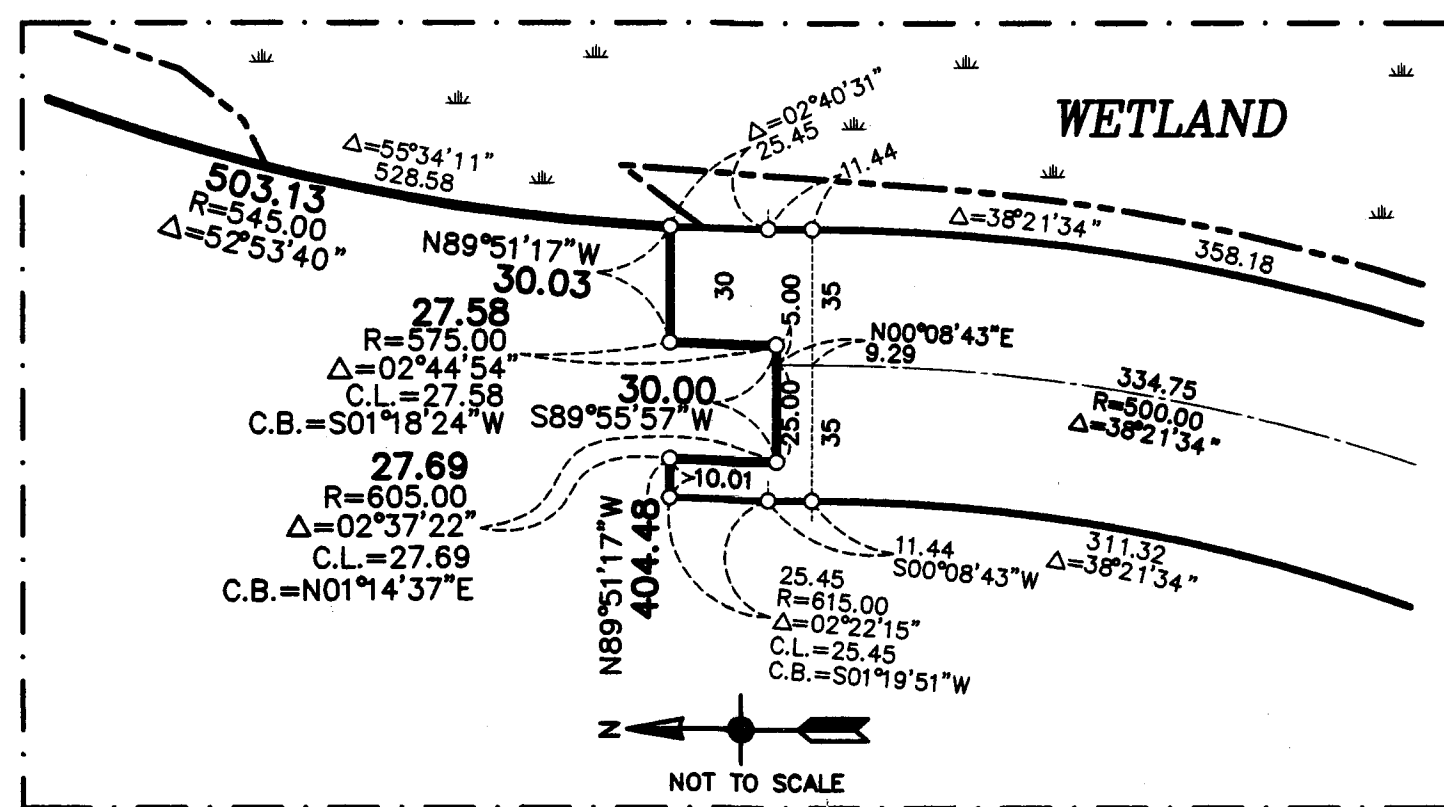
INSET 'E'

NORTH MEADOWS

CITY OF BLAINE
COUNTY OF ANOKA
SEC. 14, TWP. 31, RGE. 23

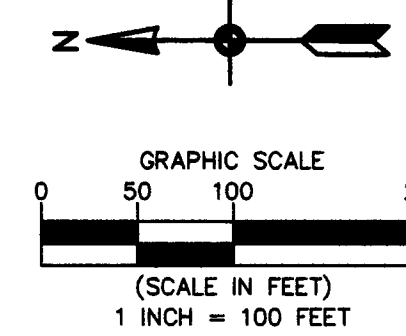


DETAIL



For the purposes of this plat, the East line of Outlot G, GLENN MEADOWS is assumed to have a bearing of South 00 degrees 40 minutes 16 seconds West.

- Denotes 5/8 inch by 14 inch Rebar, set or to be set within one year of recording of this plat and marked with license number 40361
- Denotes found 1/2 inch Iron Pipe marked with Cap No. 20595 unless otherwise noted
- Denotes Wetlands that were provided digitally by the Rice Creek Watershed District delineated in 2015.



56 56