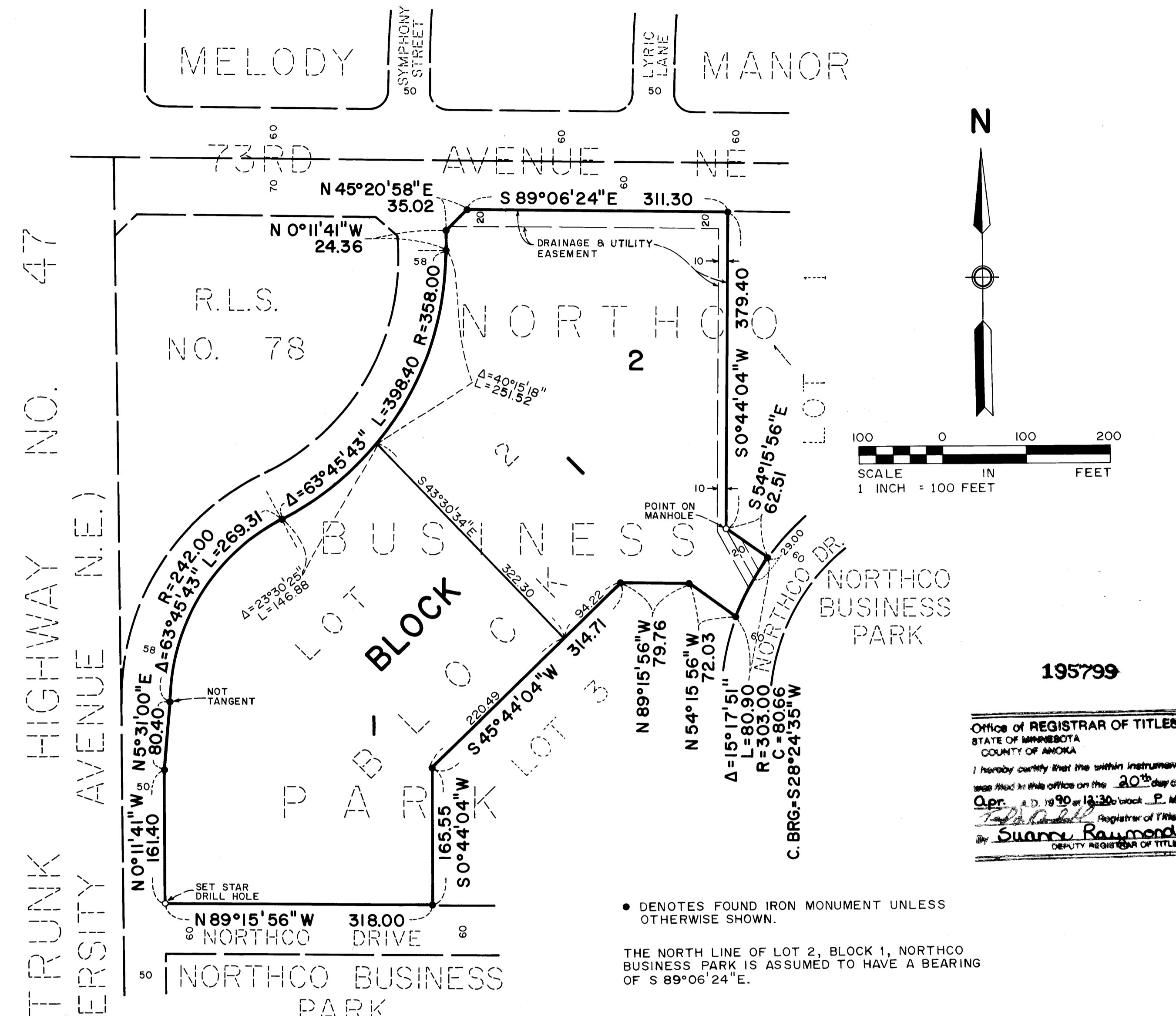


NORTHCO BUSINESS PARK 2ND ADDITION



STATE TRUNK HIGHWAY NO. 47
(UNIVERSITY AVENUE N.E.)

I hereby certify that I have surveyed and platted the property described on this plat as NORTHCO BUSINESS PARK 2ND ADDITION, that this plat is a correct representation of the survey, that all distances are correctly shown on the plat in feet and hundredths of a foot, that all monuments have been correctly placed in the ground as shown, that the outside boundary lines are correctly designated on the plat and that there are no wetlands or public highways to be designated other than as shown.

STATE OF MINNESOTA
COUNTY OF HENNEPIN

The foregoing Surveyor's Certificate was acknowledged before me this 26th day of February, 1990 by Edward H. Sunde, a registered Land Surveyor, Minnesota Registration No. 8612.

FRIDLEY, MINNESOTA

This plat of NORTHCO BUSINESS PARK 2ND ADDITION was approved and accepted by the City Council of the City of Fridley, Minnesota, at a regular meeting thereof, held this 26th day of February, 1990. If applicable, the written comments and recommendations of the Commissioner of Transportation and the County Highway Engineer have been received by the City or the prescribed 30 day period has elapsed without receipt of such comments and recommendations, as provided by Minnesota Statutes, 505.03 Subdivision 2.

CITY COUNCIL OF FRIDLEY, MINNESOTA
BY: William J. Nee its Mayor

This plat has been approved this 26th day of February, 1990.

Edward H. Sunde
Edward H. Sunde, Land Surveyor
Minnesota Registration No. 8612

Shirley M. Garrett
Notary Public, Hennepin County, Minnesota
My Commission Expires Jan 19, 1991

BY: William J. Burns its Manager

BY: Merlyn "Skip" Anderson
Anoka County Surveyor

Office of REGISTRAR OF TITLES
STATE OF MINNESOTA
COUNTY OF ANOKA
I hereby certify that the within instrument was filed in this office on the 20th day of Apr, A.D. 1990 at 12:30 P.M.
By Suanna Raymond
DEPUTY REGISTRAR OF TITLES

• DENOTES FOUND IRON MONUMENT UNLESS OTHERWISE SHOWN.

THE NORTH LINE OF LOT 2, BLOCK 1, NORTHCO BUSINESS PARK IS ASSUMED TO HAVE A BEARING OF S 89°06'24"E.

KNOW ALL MEN BY THESE PRESENTS: That LARSEN-DORAN PARTNERSHIP III, a Minnesota general partnership, owner and proprietor, NORWEST BANK MINNESOTA, N.A., a national banking association under the laws of the United States, AMERICAN NATIONAL BANK AND TRUST COMPANY, a national banking association under the laws of the United States and FRIDLEY BUSINESS CENTER PARTNERSHIP, a Minnesota general partnership, mortgagees of the following described property situated in the County of Anoka, State of Minnesota, to wit:

Lot 2, Block 1, NORTHCO BUSINESS PARK, according to the recorded plat thereof, Anoka County, Minnesota
Have caused the same to be surveyed and platted as NORTHCO BUSINESS PARK 2ND ADDITION and do hereby donate and dedicate to the public, for public use forever, the drainage and utility easements.

In witness whereof said LARSEN-DORAN PARTNERSHIP III, a Minnesota general partnership, has caused these presents to be signed by Kelly Doran as General Partner this 6 day of MARCH, 1990.

And in witness whereof said NORWEST BANK MINNESOTA, N.A., a national banking association under the laws of the United States has caused these presents to be signed by its proper officer this 8 day of MARCH, 1990.

And in witness whereof said AMERICAN NATIONAL BANK AND TRUST COMPANY, a national banking association under the laws of the United States has caused these presents to be signed by its proper officers this 9th day of MARCH, 1990.

And in witness whereof said FRIDLEY BUSINESS CENTER PARTNERSHIP, a Minnesota general partnership, has caused these presents to be signed by Dale R. Edstrom, as President of Northco Corporation, a corporation under the laws of the State of Minnesota, as General Partner of Northco-Fridley Associates Limited Partnership, a Minnesota limited partnership, as General Partner, this 7th day of MARCH, 1990.

LARSEN-DORAN PARTNERSHIP III
Signed: [Signature] a general partner
NORWEST BANK MINNESOTA, N.A.
Signed: Brian J. Opp as Vice President
AMERICAN NATIONAL BANK AND TRUST COMPANY
Signed: [Signature] as Vice President Signed: Mary Ruch as Vice President
FRIDLEY BUSINESS CENTER PARTNERSHIP
SIGNED: [Signature] as president of Northco Corporation, a corporation under the laws of the State of Minnesota, as general partner of Northco-Fridley Associates Limited Partnership, a Minnesota limited partnership, as general partner.

STATE OF MINNESOTA
COUNTY OF HENNEPIN

The foregoing instrument was acknowledged before me this 6 day of MARCH, 1990 by Kelly Doran a general partner of LARSEN-DORAN PARTNERSHIP III, a Minnesota general partnership, on behalf of LARSEN-DORAN PARTNERSHIP III, a Minnesota General partnership.

W. Christopher Galle
Notary Public, Hennepin County, Minnesota
My Commission Expires AUG 8, 1995

STATE OF MINNESOTA
COUNTY OF HENNEPIN

The foregoing instrument was acknowledged before me this 8 day of MARCH, 1990 by Brian J. Opp as Vice President of NORWEST BANK MINNESOTA, N.A., a national banking association under the laws of the United States, on behalf of NORWEST BANK MINNESOTA, N.A., a national banking association.

Mary E. Phimister
Notary Public, Hennepin County, Minnesota
My Commission Expires 2-19-91

STATE OF MINNESOTA
COUNTY OF RAMSEY

The foregoing instrument was acknowledged before me this 9th day of MARCH, 1990 by Terry L. Kriesel as Vice President and Mary Ruch as Vice President of AMERICAN NATIONAL BANK AND TRUST COMPANY, a national banking association under the laws of the United States, on behalf of AMERICAN NATIONAL BANK AND TRUST COMPANY, a national banking association.

[Signature]
Notary Public, Ramsey County, Minnesota
My Commission Expires 3-21-91

April Waterkamp
Notary Public - Minnesota
RAMSEY COUNTY
MY COM. EXPIRES MAR. 21, 1991

STATE OF MINNESOTA
COUNTY OF HENNEPIN

The foregoing instrument was acknowledged before me this 7th day of MARCH, 1990 by Dale R. Edstrom, as President of Northco Corporation, a corporation under the laws of the State of Minnesota, as general partner of Northco-Fridley Associates Limited Partnership, a Minnesota Limited Partnership, as general partner of Fridley Business Center Partnership, a Minnesota general partnership, on behalf of Fridley Business Center Partnership, a Minnesota general partnership.

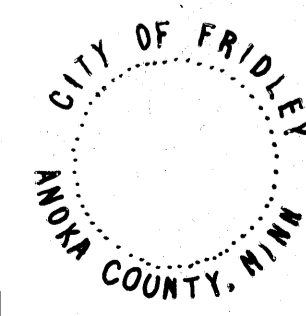
[Signature]
Notary Public, Ramsey County, Minnesota
My Commission Expires January 20, 1992

Larry Berle
Notary Public - Minnesota
RAMSEY COUNTY
MY COM. EXPIRES JAN. 21, 1992

"NO DELINQUENT TAXES AND TRANSFER ENTL'ED"

April 20 1990
Charles R. Rebeles
Auditor, Anoka County
BY: [Signature] Deputy

HEREBY CERTIFY THAT THE TAXES PAYABLE IN THE YEAR 1990 ON THE LANDS DESCRIBED WITHIN ARE PAID
Donald C. Bailey
Anoka County Treasurer
[Signature] Deputy



Sunde Land Surveying Inc.