

NORTHCO BUSINESS PARK 3RD ADDITION

KNOW ALL MEN BY THESE PRESENTS: That FRIDLEY BUSINESS CENTER PARTNERSHIP, a Minnesota General partnership, owner and proprietor, and NORWEST BANK MINNESOTA, N.A., a national banking association under the laws of the United States, mortgagee of the following described property situated in the County of Anoka, State of Minnesota, to wit:

Lots 5 and 6, Block 2, NORTHCO BUSINESS PARK, files of the Registrar of Titles, Anoka County, Minnesota.

And that WILLAMETTE INDUSTRIES, INC., an Oregon corporation, owner and proprietor of the following described property situated in the County of Anoka, State of Minnesota, to wit:

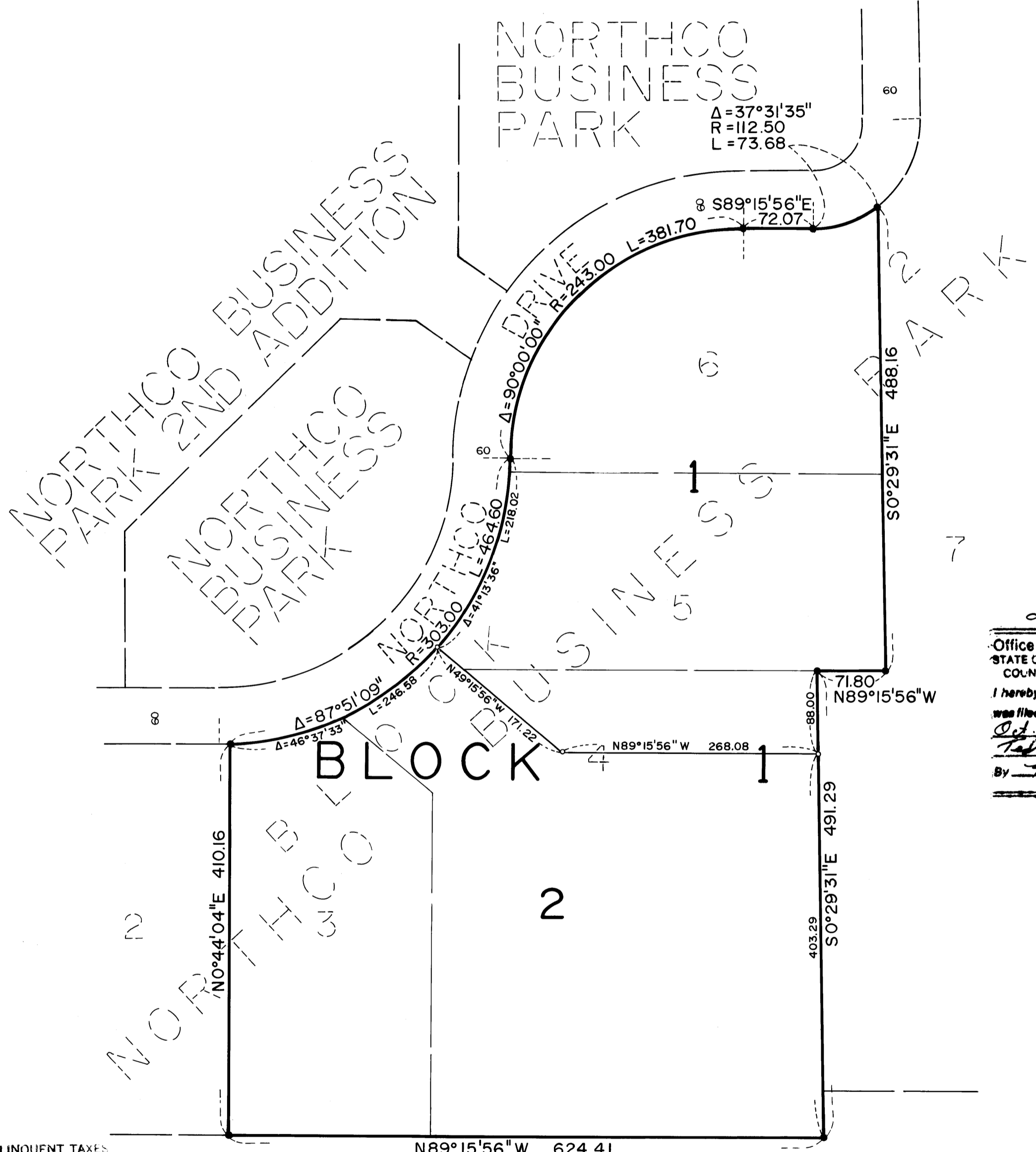
Lots 3 and 4, Block 2, NORTHCO BUSINESS PARK, files of the Registrar of Titles, Anoka County, Minnesota.

Have caused the same to be surveyed and platted as NORTHCO BUSINESS PARK 3RD ADDITION

In witness whereof said FRIDLEY BUSINESS CENTER PARTNERSHIP, a Minnesota general partnership, has caused these presents to be signed by Dale R. Edstrom, as President of Northco Corporation, a corporation under the laws of the State of Minnesota, as General Partner of Northco-Fridley Associates Limited Partnership, a Minnesota Limited Partnership, as General Partner, this 10th day of September, 1990.

And in witness whereof said NORWEST BANK MINNESOTA, N.A., a national banking association under the laws of the United States has caused these presents to be signed by its proper officers this 10th day of September, 1990.

And in witness whereof said WILLAMETTE INDUSTRIES, INC., an Oregon corporation, has caused these presents to be signed by its proper officer this 10th day of September, 1990.



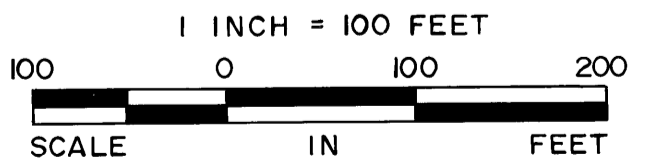
201362
Office of REGISTRAR OF TITLES
STATE OF MINNESOTA
COUNTY OF ANOKA
I hereby certify that the within instrument was filed in this office on the 15th day of Oct, A.D. 1990 at 3:15 o'clock P. M.
By Katherine Beier
DEPUTY REGISTRAR OF TITLES

"NO DELINQUENT TAXES AND TRANSFER ENTLRED"
October 15 1990
Charles R. Rosebrian
Auditor, Anoka County
BY [Signature]
Deputy

• DENOTES IRON MONUMENT
1/2" x 16" IRON PIPE SET
AND MARKED BY
REGISTRATION NO. 8612

THE WEST LINE OF LOT 3, BLOCK 2,
NORTHCO BUSINESS PARK IS
ASSUMED TO HAVE A BEARING OF
N0°44'04"E

"NO DELINQUENT TAXES AND TRANSFER ENTLRED"
October 5th 1990
Charles Rosebrian
Auditor, Anoka County
BY [Signature]
Deputy



I HEREBY CERTIFY THAT THE TAXES PAYABLE IN THE YEAR 1990 ON THE LANDS DESCRIBED WITHIN ARE PAID
Donald C. Bailey
Anoka County Treasurer
L. Henry - Deputy

LARRY BERG
NOTARY PUBLIC - MINNESOTA
RAMSEY COUNTY
My Commission Expires Jan. 20, 1992

[Signature]
Notary Public, Ramsey County, Minnesota
My Commission Expires January 20, 1992

STATE OF MINNESOTA
COUNTY OF Hennepin
The foregoing instrument was acknowledged before me this 10th day of September, 1990 by Dale R. Edstrom, as President of Northco Corporation, a corporation under the laws of the State of Minnesota, as General Partner of Northco-Fridley Associates Limited Partnership, a Minnesota Limited Partnership, as General Partner of Fridley Business Center Partnership, a Minnesota General Partnership, on behalf of Fridley Business Center Partnership, a Minnesota General Partnership.

STATE OF MINNESOTA
COUNTY OF Hennepin

The foregoing instrument was acknowledged before me this 10th day of September, 1990 by Brian J. Opp as Vice President and Michael M. [Signature] as Asst. Vice President of NORWEST BANK MINNESOTA, N.A., a national banking association under the laws of the United States, on behalf of NORWEST BANK MINNESOTA, N.A., a national banking association.

MARY E. PHIMISTER
NOTARY PUBLIC - MINNESOTA
HENNEPIN COUNTY
My Commission Expires Feb 19, 1991

[Signature]
Notary Public, Hennepin County, Minnesota
My Commission Expires 2-19-91

STATE OF ~~MINNESOTA~~ OREGON
COUNTY OF Multnomah

The foregoing instrument was acknowledged before me this 12th day of September, 1990 by Wm. P. Kinnune as Exec. Vice President and [Signature] as [Signature] of WILLAMETTE INDUSTRIES, INC., an Oregon Corporation, on behalf of WILLAMETTE INDUSTRIES, INC., an Oregon Corporation.

[Signature] (Nikki G. Galovich)
Notary Public, Multnomah County, Oregon
My Commission Expires 3/1/92

I hereby certify that I have surveyed and platted the property described on this plat as NORTHCO BUSINESS PARK 3RD ADDITION, that this plat is a correct representation of the survey, that all distances are correctly shown on the plat in feet and hundredths of a foot, that all monuments have been correctly placed in the ground as shown, that the outside boundary lines are correctly designated on the plat and that there are no wetlands or public highways to be designated other than as shown.

[Signature]
Edward H. Sunde, Land Surveyor
Minnesota Registration No. 8612

STATE OF MINNESOTA
COUNTY OF HENNEPIN

The foregoing Surveyor's Certificate was acknowledged before me this 10th day of September, 1990 by Edward H. Sunde, Land Surveyor, Minnesota Registration No. 8612

[Signature]
Notary Public, Hennepin County, Minnesota
My Commission Expires Jan 10, 1991

FRIDLEY, MINNESOTA

This plat of NORTHCO BUSINESS PARK 3RD ADDITION was approved and accepted by the City Council of the City of Fridley, Minnesota, at a regular meeting thereof, held this 17th day of September, 1990. If applicable, the written comments and recommendations of the Commissioner of Transportation and the County Highway Engineer have been received by the City or the prescribed 30 day period has elapsed without receipt of such comments and recommendations, as provided by Minnesota Statutes, 505.03 Subdivision 2.

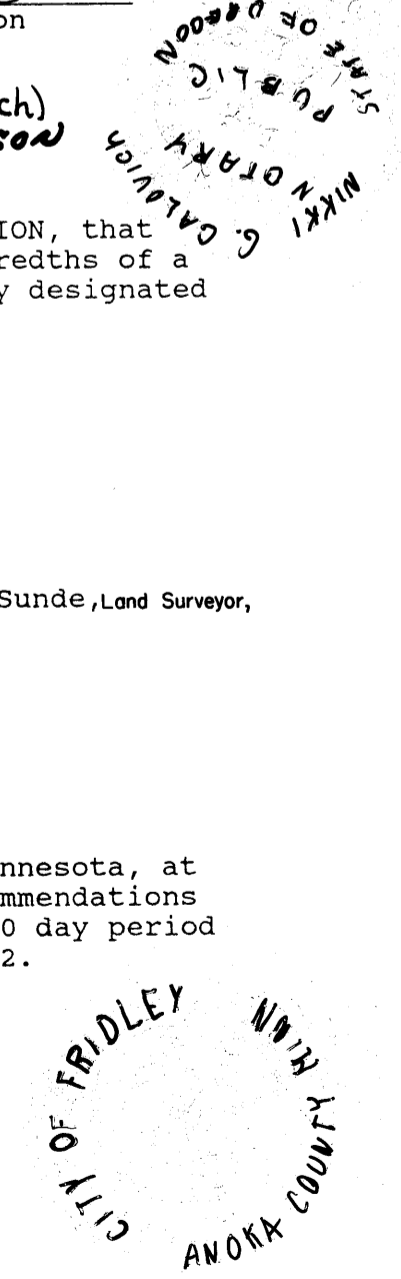
CITY COUNCIL OF FRIDLEY, MINNESOTA

BY: William J. Neil its Mayor

BY: [Signature] its Manager

This plat has been approved this 5th day of Oct, 1990.

BY: [Signature]
Merlyn "Skip" Anderson
Anoka County Surveyor



Sunde Land Surveying Inc.