

# NORTHCO BUSINESS PARK

CITY OF FRIDLEY  
COUNTY OF ANOKA

KNOW ALL MEN BY THESE PRESENTS: That FRIDLEY BUSINESS CENTER PARTNERSHIP, a Minnesota General partnership, owner and proprietor, and NORWEST BANK MINNESOTA, N.A., a national banking association under the laws of the United States, mortgagee of the following described property situated in the County of Anoka, State of Minnesota, to wit:

Tract, B, REGISTERED LAND SURVEY NO. 78, files of the Registrar of Titles, Anoka County, Minnesota

And

Tracts A & B, REGISTERED LAND SURVEY NO. 6, files of the Registrar of Titles, Anoka County, Minnesota

Have caused the same to be surveyed and platted as NORTHCO BUSINESS PARK and do hereby donate and dedicate to the public, for public use forever, the avenue, the drive and the drainage and utility easements.

In witness whereof said FRIDLEY BUSINESS CENTER PARTNERSHIP, a Minnesota general partnership, has caused these presents to be signed by Dale R. Edstrom, as President of Northco Corporation, a corporation under the laws of the State of Minnesota, as General Partner of Northco-Fridley Associates Limited Partnership, a Minnesota Limited Partnership, as General Partner, this 13<sup>TH</sup> day of February, 1989.

And in witness whereof said NORWEST BANK MINNESOTA, N.A., a national banking association under the laws of the United States has caused these presents to be signed by its proper officers this 13<sup>TH</sup> day of February, 1989.

FRIDLEY BUSINESS CENTER PARTNERSHIP

SIGNED: [Signature], as president of Northco Corporation, a corporation under the laws of the State of Minnesota, as General Partner of Northco-Fridley Associates Limited Partnership, a Minnesota Limited Partnership, as General Partner.

NORWEST BANK MINNESOTA, N.A.

SIGNED: Brian J. Opp as Vice President Jessica C. Holm as Commercial Banking Officer

STATE OF MINNESOTA  
COUNTY of Hennepin

The foregoing instrument was acknowledged before me this 13<sup>TH</sup> day of February, 1989 by Dale R. Edstrom, as President of Northco Corporation, a corporation under the laws of the State of Minnesota, as General Partner of Northco-Fridley Associates Limited Partnership, a Minnesota Limited Partnership, as General Partner of Fridley Business Center Partnership, a Minnesota General partnership, on behalf of Fridley Business Center Partnership, a Minnesota General partnership.

[Signature]  
Notary Public, Ramsey County, Minnesota  
My Commission Expires 10-14-91

STATE OF MINNESOTA  
COUNTY OF Hennepin

The foregoing instrument was acknowledged before me this 13<sup>TH</sup> day of February, 1989 by Brian J. Opp as Vice President and Jessica C. Holm as Commercial Banking Officer of NORWEST BANK MINNESOTA, N.A., a national banking association under the laws of the United States, on behalf of NORWEST BANK MINNESOTA, N.A., a national banking association.

[Signature]  
Notary Public, Ramsey County, Minnesota  
My Commission Expires 10-14-91

I hereby certify that I have surveyed and platted the property described on this plat as NORTHCO BUSINESS PARK, that this plat is a correct representation of the survey, that all distances are correctly shown on the plat in feet and hundredths of a foot, that all monuments have been correctly placed in the ground as shown, that the outside boundary lines are correctly designated on the plat and that there are no wetlands or public highways to be designated other than as shown.

[Signature]  
Edward H. Sunde, Land Surveyor  
Minnesota Registration No. 8612

STATE OF MINNESOTA  
COUNTY OF HENNEPIN

The foregoing Surveyor's Certificate was acknowledged before me this 10<sup>TH</sup> day of FEBRUARY, 1989 by Edward H. Sunde, Minnesota Registrar No. 8612.

[Signature]  
Notary Public, HENNEPIN County, Minnesota  
My Commission Expires SEPTEMBER 26, 1991



FRIDLEY, MINNESOTA

This plat of NORTHCO BUSINESS PARK was approved and accepted by the City Council of the City of Fridley, Minnesota, at a regular meeting thereof, held this 13<sup>TH</sup> day of February, 1989. If applicable, the written comments and recommendations of the Commissioner of Transportation and the County Highway Engineer have been received by the City on the prescribed 30 day period has elapsed without receipt of such comments and recommendations, as provided by Minnesota Statutes, 505.03 Subdivision 2.

CITY COUNCIL OF FRIDLEY, MINNESOTA

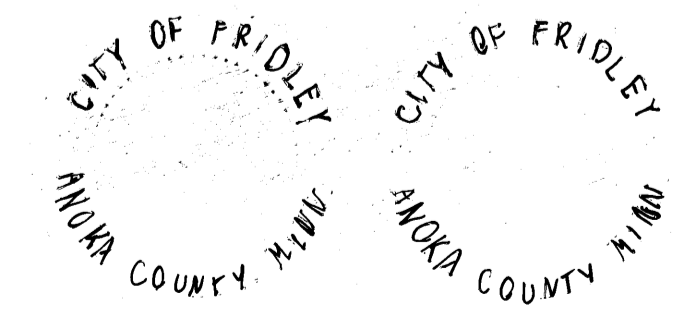
BY: [Signature] its Mayor

BY: [Signature] its Manager

This plat has been approved this 1<sup>ST</sup> day of MARCH, 1989.

BY: MERLYN D. ANDERSON  
Merlyn "Skip" Anderson  
Anoka County Surveyor [Signature] Deputy

"NO DELINQUENT TAXES AND TRANSFER ENTLRED"  
March 8th 1989  
[Signature]  
Auditor, Anoka County  
BY: [Signature] Deputy



"NO DELINQUENT TAXES AND TRANSFER ENTLRED"  
March 1<sup>st</sup> 1989  
[Signature]  
Auditor, Anoka County  
BY: [Signature] Deputy

HEREBY CERTIFY THAT THE TAXES DUE IN THE YEAR 1989 ON THE LANDS DESCRIBED WITHIN ARE PAID  
[Signature]  
Anoka County Treasurer

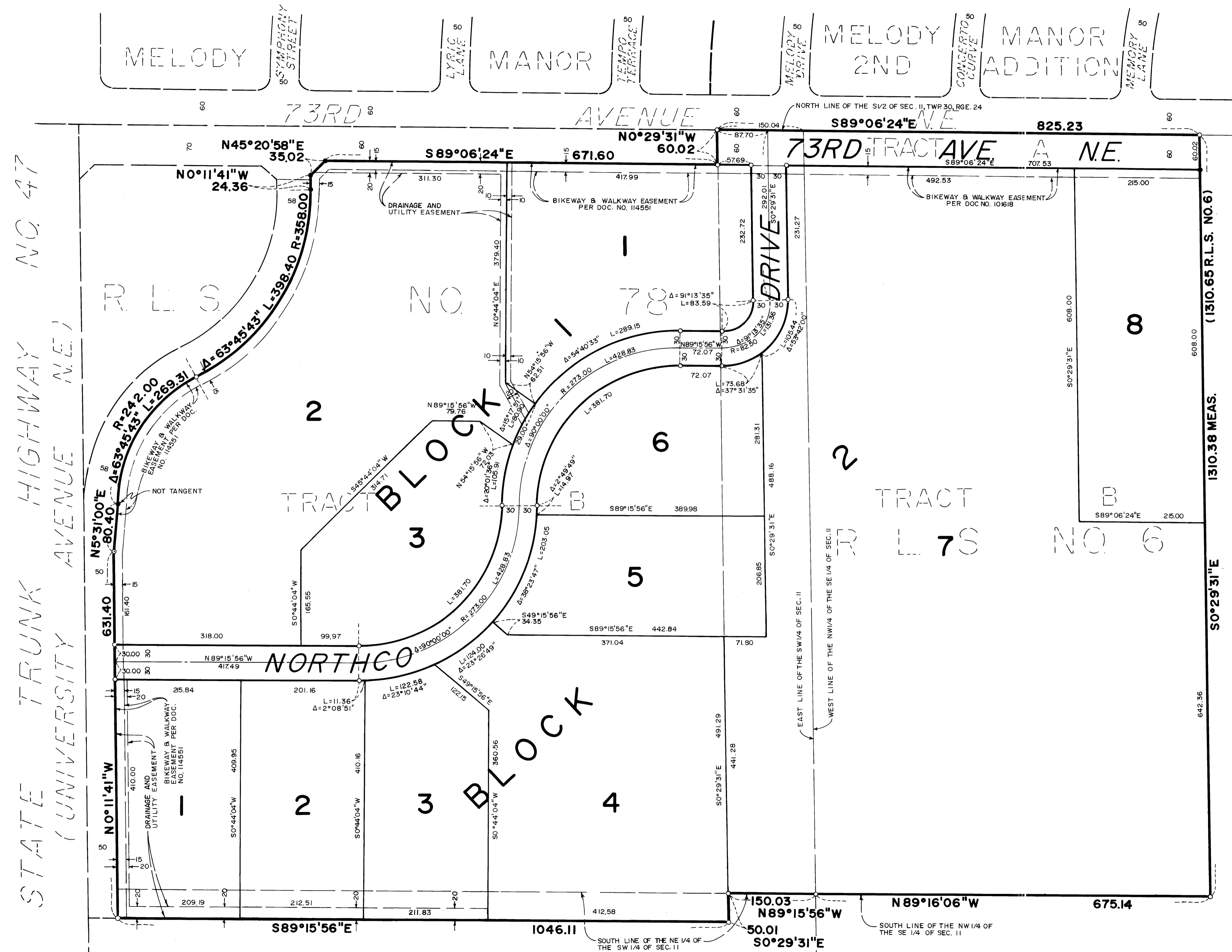
Office of REGISTRAR OF TITLES  
STATE OF MINNESOTA  
COUNTY OF ANOKA  
I hereby certify that the within instrument was filed in this office on the 8<sup>th</sup> day of March A.D. 1989 at 4 o'clock P.M.  
[Signature] Registrar of Titles  
BY: [Signature] DEPUTY REGISTRAR OF TITLES

183857

Sunde Land Surveying Inc.

# NORTHCO BUSINESS PARK

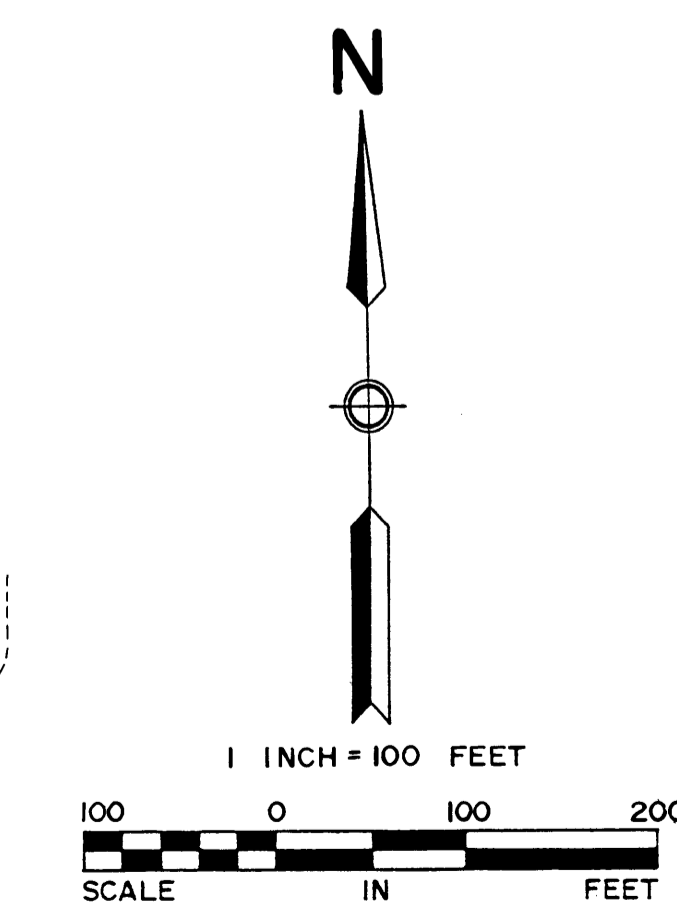
CITY OF FRIDLEY  
COUNTY OF ANOKA



○ DENOTES IRON MONUMENT,  
1/2" x 16" IRON PIPE SET AND  
MARKED BY REGISTRATION  
NO. 8612

● DENOTES FOUND IRON MONUMENT UNLESS OTHERWISE SHOWN

T-4E SOUTH LINE OF TRACT B,  
REGISTERED LAND SURVEY NO. 78  
IS ASSUMED TO HAVE A BEARING  
OF  $S89^\circ 15' 56'' E$



Sunde Land Surveying Inc.