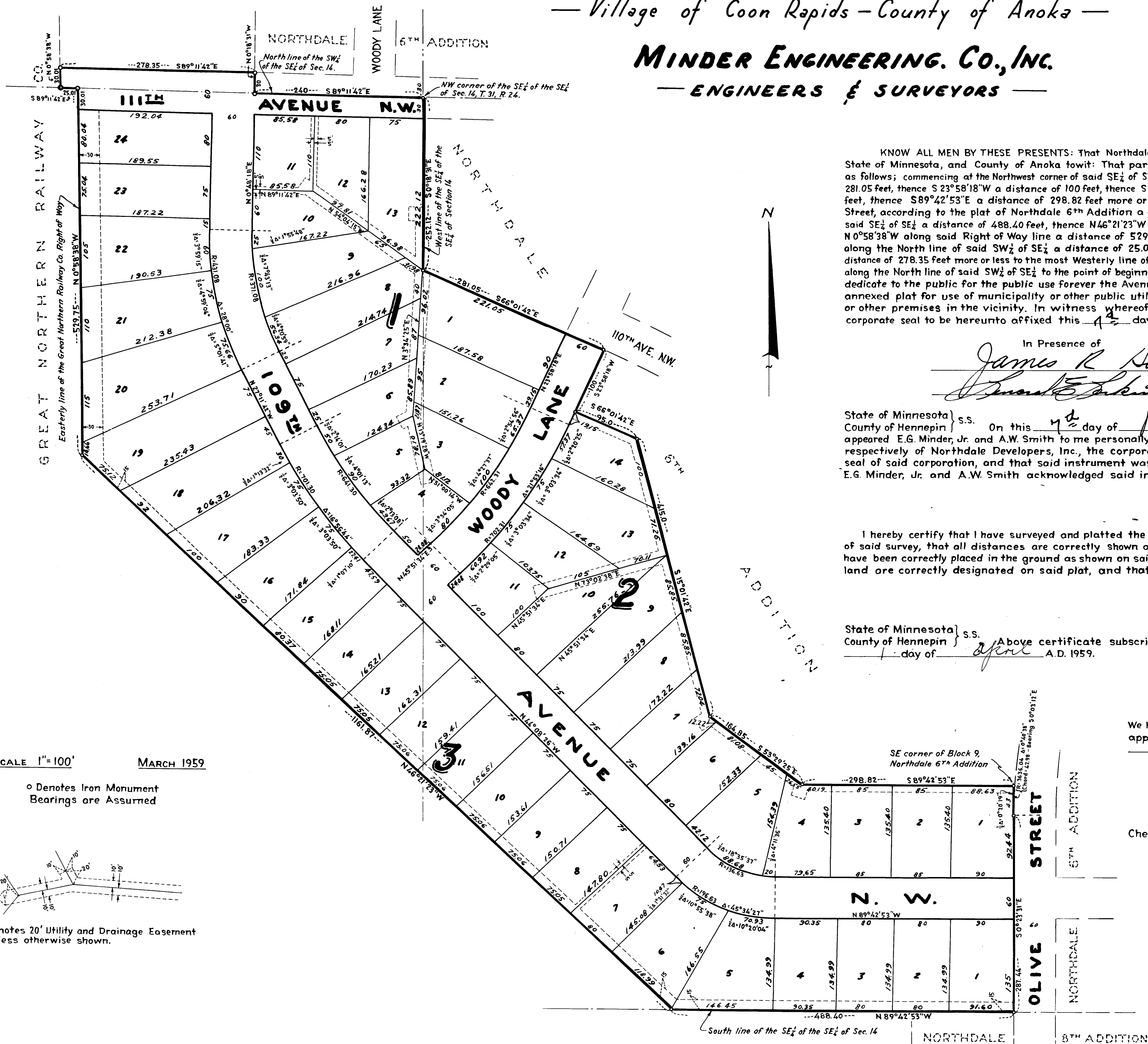


NORTHDALE 10TH ADDITION

— Village of Coon Rapids — County of Anoka —

MINDER ENGINEERING CO., INC.

— ENGINEERS & SURVEYORS —



KNOW ALL MEN BY THESE PRESENTS: That Northdale Developers, Inc., a Minnesota corporation, owners and proprietors of the following described property situate in the State of Minnesota, and County of Anoka to-wit: That part of the SW 1/4 of the SE 1/4, the SE 1/4 of the SE 1/4, and the NW 1/4 of the SE 1/4 all in Section 14, Township 31, Range 24, described as follows: commencing at the Northwest corner of said SE 1/4 of SE 1/4, thence S 0°18'31"E along the West line of said SE 1/4 of SE 1/4 a distance of 252.12 feet, thence S 66°01'42"E a distance of 281.05 feet, thence S 23°58'18"W a distance of 100 feet, thence S 66°01'42"E a distance of 95 feet, thence S 15°01'42"E a distance of 415 feet, thence S 53°29'25"E a distance of 164.85 feet, thence S 89°42'53"E a distance of 298.82 feet more or less to the Southeast corner of Block 9, Northdale 6th Addition, thence Southerly along the Westerly line of Olive Street, according to the plat of Northdale 6th Addition a distance of 330.44 feet more or less to the South line of said SE 1/4 of SE 1/4, thence N 89°42'53"W along the South line of said SE 1/4 of SE 1/4 a distance of 488.40 feet, thence N 46°21'23"W a distance of 1161.87 feet more or less to the Easterly line of the Right of Way of the Great Northern Railway Co, thence N 0°58'38"W along said Right of Way line a distance of 529.75 feet more or less to the North line of the SW 1/4 of the SE 1/4 of Section 14, Township 31, Range 24, thence N 89°11'42"E along the North line of said SW 1/4 of SE 1/4 a distance of 25.01 feet, thence N 0°58'38"W along the Easterly line of said Right of Way a distance of 30.01 feet, thence S 89°11'42"E a distance of 278.35 feet more or less to the most Westerly line of Northdale 6th Addition, thence S 0°18'31"E a distance of 30 feet to the North line of said SW 1/4 of SE 1/4, thence S 89°11'42"E along the North line of said SW 1/4 of SE 1/4 to the point of beginning; have caused the same to be surveyed and platted as NORTHDALE 10TH ADDITION, and do hereby donate and dedicate to the public for the public use forever the Avenues and Lane as shown on the annexed plat, subject to Utility and Drainage Easements as shown on the annexed plat for use of municipality or other public utilities, for installation and maintenance of facilities installed in or over said easements to serve adjacent or other premises in the vicinity. In witness whereof Northdale Developers, Inc. has caused these presents to be signed by its proper officers and its corporate seal to be hereunto affixed this 11 day of April A.D. 1959.

In Presence of
James R. Sittl
Frank E. Sittl
 As to E.G. Minder, Jr. and A.W. Smith

NORTHDALE DEVELOPERS, INC.
E.G. Minder, Jr. PRESIDENT
A.W. Smith VICE PRESIDENT

State of Minnesota } s.s. On this 11 day of April A.D. 1959, before me a Notary Public within and for said State and County personally appeared E.G. Minder, Jr. and A.W. Smith to me personally known, who being each by me duly sworn did say that they are the President and Vice President, respectively of Northdale Developers, Inc., the corporation named in the foregoing instrument, that the seal affixed to said instrument is the corporate seal of said corporation, and that said instrument was signed and sealed in behalf of said corporation by authority of its Board of Directors and said E.G. Minder, Jr. and A.W. Smith acknowledged said instrument to be the free act and deed of said corporation.

Leo S. Sobolik
 Notary Public, Hennepin County, Minnesota
 My Commission Expires Nov. 5, 1961

I hereby certify that I have surveyed and platted the property described on this plat as NORTHDALE 10TH ADDITION, that this plat is a correct representation of said survey, that all distances are correctly shown on said plat in figures denoting feet and decimals of a foot, that the monuments for the guidance of future surveys have been correctly placed in the ground as shown on said plat, that the topography of the land is correctly shown on said plat, that the outside boundaries of the land are correctly designated on said plat, and that there are no wet lands or public highways to be designated on said plat other than as shown thereon.

Harold R. Olson
 Surveyor - Minnesota Registration No 2039

State of Minnesota } s.s. Above certificate subscribe and sworn to before me, a Notary Public, within and for said State and County on this 11 day of April A.D. 1959.

Leo S. Sobolik
 Notary Public, Hennepin County, Minnesota
 My Commission Expires Nov. 5, 1961

We hereby certify that the Village Council of the Village of Coon Rapids, Anoka County, Minnesota, duly accepted and approved the annexed plat of NORTHDALE 10TH ADDITION, at a regular meeting thereof held this 11 day of April A.D. 1959.

VILLAGE OF COON RAPIDS, ANOKA COUNTY, MINNESOTA
 by *James Sittl* Mayor
 by *Frank E. Sittl* Clerk

Checked and approved this 8th day of May A.D. 1959.
Kolond W. Anderson
 Anoka County Surveyor

OFFICE OF REGISTER OF DEEDS
 STATE OF MINNESOTA, COUNTY OF ANOKA } s.s.
 I hereby certify that the within instrument was filed in this office for record on the 11 day of April A.D. 1959 at 4 o'clock P.M. It was duly recorded in book R-1 Plats page 25

I HEREBY CERTIFY THAT TAXES FOR THE YEAR 1958 ON THE LANDS DESCRIBED WITHIN ARE PAID
Chattanooga Bowers
 County Treasurer

Gracie Howard
 Register of Deeds
 By *Grace Howard*, Deputy

TAXES PAID
 This 15th day of May 1959
Harmon H. Campbell
 Auditor, Anoka County, Minn.
Robert O. Peterson Deputy

SCALE 1"=100' MARCH 1959
 o Denotes Iron Monument Bearings are Assumed
 Denotes 20' Utility and Drainage Easement unless otherwise shown.