

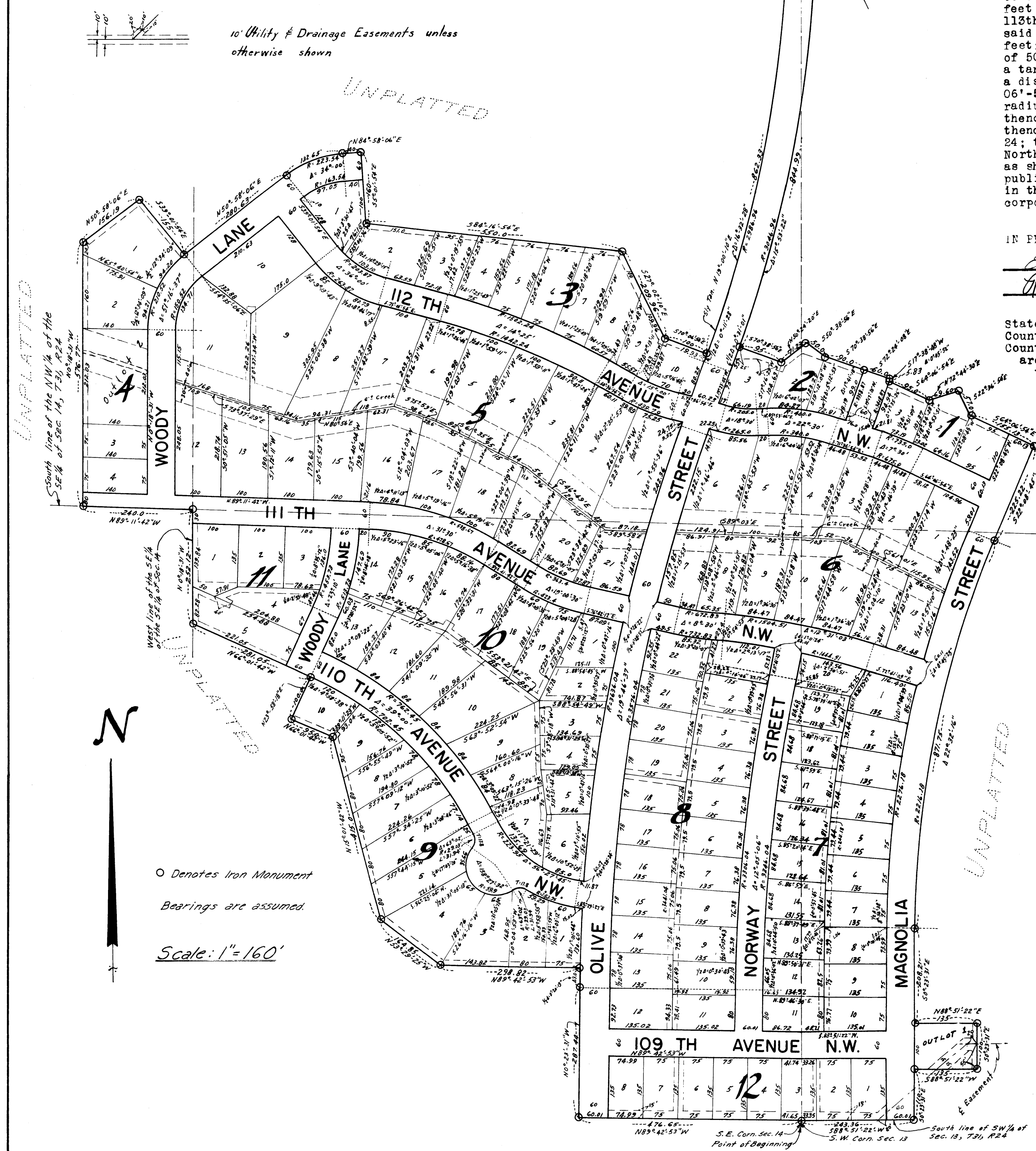
NORTHDALE 6TH ADDITION

VILLAGE OF COON RAPIDS—COUNTY OF ANOKA

JUNE 1958

MINDER ENGINEERING CO., INC.
ENGINEERS & SURVEYORS

KNOW ALL MEN BY THESE PRESENTS that Northdale Developers, Inc., a Minnesota Corporation, owners and proprietors of the following described property situate in the State of Minnesota, and County of Anoka, to-wit: All that part of the Southwest 1/4 of Section 13, and the Southeast 1/4 of Section 14, all in Township 31, Range 24 described as follows: Commencing at the Southeast corner of the Southeast 1/4 of said Section 14; thence N.89°-42'-53"W along the South line of the Southeast 1/4 of said Section 14 a distance of 476.65 feet; thence N.0°-23'-31"W a distance of 287.44 feet; thence on a tangential curve to the right, the radius of which is 3,636.04 feet, a distance of 45.0 feet; thence N.89°-42'-53"W a distance of 298.82 feet; thence N.52°-29'-25"W a distance of 164.85 feet; thence N.15°-01'-42"W a distance of 415.0 feet; thence N.66°-01'-42"W a distance of 95.0 feet; thence N.23°-58'-18"E a distance of 100.0 feet; thence N.66°-01'-42"W a distance of 281.05 feet, more or less, to the West line of the Southeast 1/4 of said Section 14; thence N.0°-18'-31"W, along the West line of the Southeast 1/4 of the Southeast 1/4 of said Section 14 a distance of 252.12 feet, more or less, to the Northwest corner thereof; thence N.89°-11'-42"W, along the South line of the Northwest 1/4 of the Southeast 1/4 of said Section 14 a distance of 240.0 feet; thence N.0°-18'-31"W, a distance of 576.77 feet; thence N.50°-58'-06"E a distance of 156.19 feet; thence S.39°-01'-54"E, a distance of 155 feet; thence N.50°-58'-06"E, and tangent to said last described curve a distance of 40 feet; thence S.5°-01'-54"E, a distance of 160 feet; thence S.84°-16'-54"E, a distance of 550.0 feet; thence S.27°-02'-10"E, a distance of 209.96 feet; thence S.70°-06'-54"E, a distance of 100.0 feet; thence Northerly along a tangential curve convex to the East, the radius of which is 2,986.96 feet, and the Southerly tangent of which bears N.19°-00'-10"E, a distance of 862.33 feet; thence N.2°-27'-42"E, and tangent to said last described curve a distance of 68.67 feet, more or less, to a point on the Southerly line of 113th Avenue N.W. distant 60.06 feet Westerly from the Northwest corner of Lot 3, Block 7, Northdale 4th Addition; thence N.89°-57'E, along the Southerly line of said 113th Avenue NW to the Northwest corner of said Lot 3, Block 7, Northdale 4th Addition; thence S.2°-27'-42"W, along the Westerly line of said Lot 3 a distance of 71.3 feet; thence on a tangential curve to the right the radius of which is 3,046.96 feet, a distance of 844.99 feet; thence S.70°-38'-56"E, a distance of 95.0 feet; thence N50°-24'-20"E, a distance of 71.23 feet; thence S.50°-38'-56"E, a distance of 50.0 feet; thence S.70°-38'-56"E, a distance of 90.0 feet; thence S.72°-24'-08"E, a distance of 60.0 feet; thence Southwesterly along a tangential curve to the right, the last above described curve being a radial thereof, a distance of 5.83 feet; thence S.64°-06'-54"E, a distance of 95.0 feet, thence N.72°-44'-30"E, a distance of 69.60 feet; thence S.22°-36'-54"E, a distance of 57.0 feet; thence S.64°-06'-54"E, a distance of 155.13 feet; thence S.22°-08'-45"W, a distance of 225.22 feet; thence on a tangential curve to the left, the radius of which is 2,216.18 feet, a distance of 671.75 feet; thence S.0°-23'-31"E, and tangent to said curve a distance of 208.21 feet; thence N88°-51'-22"E, a distance of 135 feet, thence S.0°-23'-31"E, a distance of 100 feet, thence S.88°-51'-22"W, a distance of 135 feet; thence S.0°-23'-31"E, a distance of 110 feet more or less, to the South line of the Southeast 1/4 of said Section 13, Township 31, Range 24; thence S.88°-51'-22"W, along the South line thereof to the point of beginning; have caused the same to be surveyed and platted as Northdale 6th Addition, and do hereby donate and dedicate to the public for public use forever the Avenues, Streets, and Lane as shown on the annexed plat, subject to the Utility and Drainage Easements as shown on the annexed plat for use of municipality or other public utilities, for installation and maintenance of facilities installed in and over said easements to serve adjacent or other premises in the vicinity. In witness whereof Northdale Developers, Inc., has caused these presents to be signed by its proper officers and its corporate seal to be hereunto affixed this 6 day of August A.D. 1958.



IN PRESENCE OF
E. G. Minder, Jr.
Ralph J. Larson

As to E. G. Minder, Jr. and A. W. Smith

NORTHDALE DEVELOPERS, INC.
E. G. Minder, Jr. President
A. W. Smith Vice President

State of Minnesota ss On this 6 day of August A.D. 1958, before me a Notary Public within and for said State and County of Hennepin ss Above surveyors certificate subscribed and sworn to before me, a Notary Public, within and for said State and County on this 6 day of August A.D. 1958

County personally appeared E. G. Minder, Jr. and A. W. Smith, to me personally known, who being each by me duly sworn, did say that they are the President and Vice President, respectively of Northdale Developers, Inc., the corporation named in the foregoing instrument, and that the seal affixed to said instrument is the Corporate Seal of said corporation, and that said instrument was signed and sealed in behalf of said corporation by authority of its Board of Directors and said E. G. Minder, Jr. and A. W. Smith acknowledged said instrument to be the free act and deed of said corporation.

I hereby certify that I have surveyed and platted the property described on this plat as Northdale 6th Addition; that this plat is a correct representation of said survey, that all distances are correctly shown on said plat in figures denoting feet and decimals of a foot, that the monuments for the guidance of future surveys have been correctly placed in the ground as shown on said plat, that the topography of the land is correctly shown on said plat, that the outside boundaries of the land are correctly designated on said plat, and that there are no wet lands or public highways to be designated on said plat other than as shown thereon.

Notary Public, Hennepin County, Minnesota
My Commission Expires May 5 - 1961

Notary Public, Hennepin County, Minnesota
My Commission Expires May 5 - 1961

We hereby certify that the Village Council of the Village of Coon Rapids, Anoka County, Minnesota, duly accepted and approved the annexed plat of Northdale 6th Addition, at a regular meeting thereof held this 6 day of August A.D. 1958

VILLAGE OF COON RAPIDS, ANOKA COUNTY, MINNESOTA

Approved
Coon Rapids Zoning Commission
AUG 11, 1958
John G. Peen, Chairman
Robert W. Hafford, Secretary

by J. Melin Mayor
by James Schubert Clerk

OFFICE OF REGISTER OF DEEDS
STATE OF MINNESOTA, COUNTY OF ANOKA

I hereby certify that the within instrument was filed in this office for record on the 6 day of August, A.D. 1958, at 11:50 o'clock A.M., and was duly recorded in book 10160 of Deeds page 4

By Margaret Russell Deputy

TAXES PAID
This 15th day of Aug. 1958
Walter D. Rousseau
Anoka County, Minn.
Deputy

I HEREBY CERTIFY THAT TAXES FOR THE YEAR 1957 ON THE LANDS DESCRIBED WITHIN ARE PAID
Walter D. Rousseau
County Treasurer