

NORTHDALE 7TH ADDITION

VILLAGE OF COON RAPIDS — COUNTY OF ANOKA

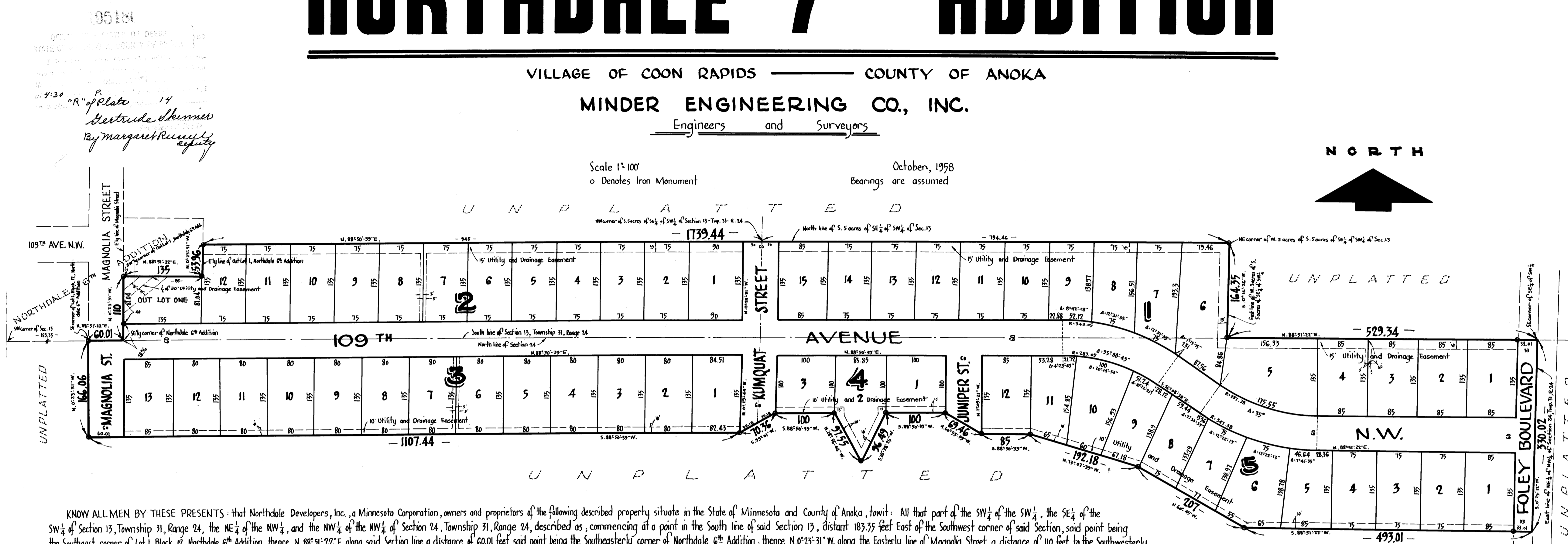
MINDER ENGINEERING CO., INC.

Engineers and Surveyors

Scale 1"=100'
o Denotes Iron Monument

October, 1958
Bearings are assumed

NORTH



KNOW ALL MEN BY THESE PRESENTS: that Northdale Developers, Inc., a Minnesota Corporation, owners and proprietors of the following described property situate in the State of Minnesota and County of Anoka, to-wit: All that part of the SW¹/₄ of the SW¹/₄ of the SW¹/₄ of the NW¹/₄ of Section 13, Township 31, Range 24, the NE¹/₄ of the NW¹/₄, and the NW¹/₄ of the NW¹/₄ of Section 24, Township 31, Range 24, described as, commencing at a point in the South line of said Section 13, distant 183.35 feet East of the Southwest corner of said Section, said point being the Southeast corner of Lot 1, Block 12, Northdale 6th Addition, thence N. 88° 51' 22" E. along said Section line a distance of 60.01 feet, said point being the Southeast corner of Northdale 6th Addition, thence N. 0° 23' 31" W. along the Easterly line of Magnolia Street a distance of 110 feet to the Southwesterly corner of Out Lot 1, Northdale 6th Addition, thence N. 88° 51' 22" E. along the South line of said Out Lot 1, a distance of 135 feet; thence N. 0° 23' 31" W. along the Easterly line of said Out Lot 1, a distance of 57.96 feet; thence N. 88° 50' 39" E., a distance of 945 feet to the Northwest corner of the South 5 acres of the SE¹/₄ of the SW¹/₄ of said Section 13, thence continuing N. 88° 50' 39" E. along the North line of said South 5 acres, a distance of 764.46 feet more or less to the Northeast corner of the West 3 acres of the South 5 acres of the SE¹/₄ of the SW¹/₄ of said Section 13, thence S. 0° 14' 20" E. along the east line of said West 3 acres of the South 5 acres, a distance of 164.35 feet more or less to the South line of said Section 13, thence N. 88° 51' 22" E. along the South line of said Section 13, a distance of 529.34 feet more or less to the Southeast corner of said SE¹/₄ of the SW¹/₄ of Section 13, thence S. 0° 25' 12" W. along the East line of the NE¹/₄ of the NW¹/₄ of Section 24, Township 31, Range 24, a distance of 330.02 feet; thence S. 88° 51' 22" W. a distance of 493.01 feet; thence N. 0° 45' W., a distance of 2.07 feet; thence N. 75° 07' 39" W., a distance of 192.18 feet; thence S. 88° 50' 39" W., a distance of 85 feet; thence N. 60° 55' 59" W., a distance of 69.46 feet; thence S. 88° 50' 39" W., a distance of 100 feet; thence S. 25° 28' 25" W., a distance of 96.49 feet; thence N. 28° 56' 44" W., a distance of 97.55 feet; thence S. 88° 50' 39" W., a distance of 100 feet; thence S. 59° 01' W., a distance of 70.36 feet; thence S. 88° 50' 39" W., a distance of 1107.44 feet; thence N. 0° 23' 31" W., a distance of 166.06 feet more or less to the point of beginning, have caused the same to be surveyed and platted as NORTHDALE 7TH ADDITION, and do hereby donate and dedicate to the public for public use forever the Boulevard, Avenue and Streets as shown on the annexed plat, subject to the Utility and Drainage Easements as shown on the annexed plat for use of municipality or other public utilities, for installation and maintenance of facilities installed in and over said easements to serve adjacent or other premises in the vicinity. In witness whereof said Northdale Developers, Inc. has caused these presents to be signed by its proper officers and its corporate seal to be hereunto affixed this 28th day of October A.D. 1958.

In Presence of
Karl L. Rood
Edward B. Algren
As to E.G. Minder, Jr. and A.W. Smith

NORTHDALE DEVELOPERS, INC.
E.G. Minder, Jr. President
A.W. Smith Vice President

The annexed plat of NORTHDALE 7TH ADDITION was approved by the Planning and Zoning Commission of the Village of Coon Rapids, Minnesota at a regular meeting thereof held this 28th day of OCTOBER A.D. 1958.

by Edwin L. Root Chairman
by Edwin L. Root (acting) Clerk

State of Minnesota }
County of Hennepin } s.s. On this 28th day of October A.D. 1958, before me a Notary Public with in and for said State and County personally appeared E.G. Minder, Jr. and A.W. Smith, to me personally known, who being each by me duly sworn, did say that they are the President and Vice President, respectively of Northdale Developers, Inc. the corporation named in the foregoing instrument, that the seal affixed to said instrument is the Corporate Seal of said corporation, and that said instrument was signed and sealed in behalf of said corporation by authority of its Board of Directors and said E.G. Minder, Jr. and A.W. Smith acknowledged said instrument to be the free act and deed of said corporation

Leo S. Stodnick
Notary Public, Hennepin County, Minnesota
My Commission Expires Nov 5 - 1961

I hereby certify that I have surveyed and platted the property described on this plat as NORTHDALE 7TH ADDITION; that this plat is a correct representation of said survey; that all distances are correctly shown on said plat in figures denoting feet and decimals of a foot; that the monuments for the guidance of future surveys have been correctly placed in the ground as shown on said plat; that the topography of the land is correctly shown on said plat; that the outside boundaries of the land are correctly designated on said plat; and that there are no wet lands or public highways to be designated on said plat other than as shown thereon.

Harold R. Olson
Surveyor - Minnesota Registration No 2039

State of Minnesota }
County of Hennepin } s.s. Above surveyors certificate subscribed and sworn to before me, a Notary Public, within and for said State and County on this 28th day of October A.D. 1958.

Leo S. Stodnick
Notary Public, Hennepin County, Minnesota - My Commission Expires Nov 5 - 1961

We hereby certify that the Village Council of the Village of Coon Rapids, Anoka County, Minnesota, duly accepted and approved the annexed plat of NORTHDALE 7TH ADDITION, at a regular meeting thereof held this 6 day of November A.D. 1958.

TAXES PAID

THE 17th day of Dec. 1958
By Kenneth W. Campbell
By John L. Page

VILLAGE OF COON RAPIDS, ANOKA COUNTY, MINNESOTA

HEREBY CERTIFY THAT TAXES FOR THE YEAR 1958 ON THE LANDS DESCRIBED WITHIN ARE PAID

By Walter W. Bowen
By John L. Page

by John L. Page Mayor
by Frank - Tolbert Clerk