

NORTHDALE COMMONS

KNOW ALL MEN BY THESE PRESENTS: That Winslow R. Chamberlain Equity Corporation, a Minnesota Corporation, owner and proprietor of the following described property situate in the County of Anoka, State of Minnesota, to wit:

That part of the Southeast Quarter of Southwest Quarter of Section 9, Township 31, Range 24, described as follows: Beginning at the Southeast corner of Southeast Quarter of Southwest Quarter; thence North 786 Feet; thence West and parallel with the South line of said Southeast Quarter of Southwest Quarter a distance of 1,332.85 feet to the Northeasterly line of Great Northern Railroad right-of-way; thence Southeasterly along said right-of-way line a distance of 1,056.17 feet; to the South line of Southeast Quarter of Southwest Quarter; thence East 615.05 feet to the place of beginning.

Has caused the same to be surveyed and platted as NORTHDALE COMMONS and does hereby donate and dedicate to the public for public use forever, the boulevard, highway and the easements for drainage and utility purposes as shown on the plat.

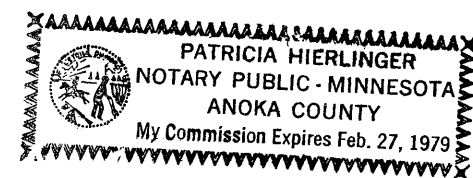
In witness whereof Winslow R. Chamberlain Equity Corporation, a Minnesota Corporation, has caused these presents to be signed by its proper officers and its corporate seal to be hereunto affixed this 20th day of November A.D., 1972.

IN PRESENCE OF:

Witness Richard M. Duncanson Witness David A. Tricke Winslow R. Chamberlain Its President
Witness Shirley S. Nettum Witness Fred R. Donaldson Vernon R. Plaisance Its Sec.-Treas.
Winslow R. Chamberlain
Vernon R. Plaisance

State of Minnesota
County of Anoka

On this 20th day of November A.D., 1972, before me, a Notary Public, within and for said County and State, personall appeared Winslow R. Chamberlain and Vernon R. Plaisance, to me personally known, who being by me each duly sworn did say that they are the President and Sec.-Treas. respectively, of Winslow R. Chamberlain Equity Corporation, the corporation named in the foregoing instrument; that the seal affixed to said instrument is the corporate seal of said corporation; that said instrument was signed and sealed in behalf of said corporation by authority of its Board of Directors and said Winslow R. Chamberlain and Vernon R. Plaisance acknowledge said instrument to be the free act and deed of said corporation.



Patricia Hierlinger
Notary Public, Anoka County, Minnesota
My Commission Expires Feb. 27, 1979

I hereby certify that I have surveyed the property described on this plat as NORTHDALE COMMONS that this plat is a correct representation of said survey; that all distances are correctly shown in feet and decimals of a foot; that all monuments have been correctly placed in the ground as shown; that the outside boundary lines are correctly designated; and that there are no wet lands to be designated on plat.

Arvid T. Bodin
Arvid T. Bodin
Land Surveyor
Minn. Reg. No. 9396

State of Minnesota The Surveyor's certificate was subscribed and sworn to before me, a Notary Public, this County of Hennepin 17th day of November A.D., 1972.

Wesley B. Baillif
WESLEY B. BAILLIF
Notary Public, Hennepin County, Minn.
My Commission Expires April 11, 1978
Notary Public, Hennepin County, Minnesota
My Commission Expires April 11, 1978

The plat of the NORTHDALE COMMONS was approved and accepted by the City of Coon Rapids, Anoka County, Minnesota, on this 14 day of Nov. A.D., 1972.

By: Donald W. Eklundson its Mayor
By: Norman J. Hennen its Clerk

I hereby certify that the City of Coon Rapids Planning Commission duly approved this plat.

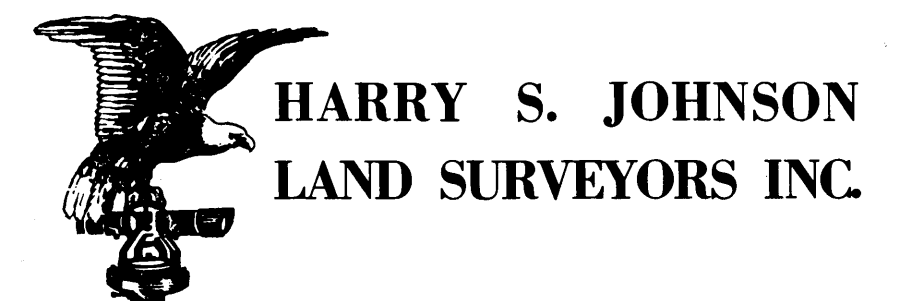
William J. McLean, Jr.
Secretary, Planning Commission

Checked and approved this 6th day of December 1972, A.D.

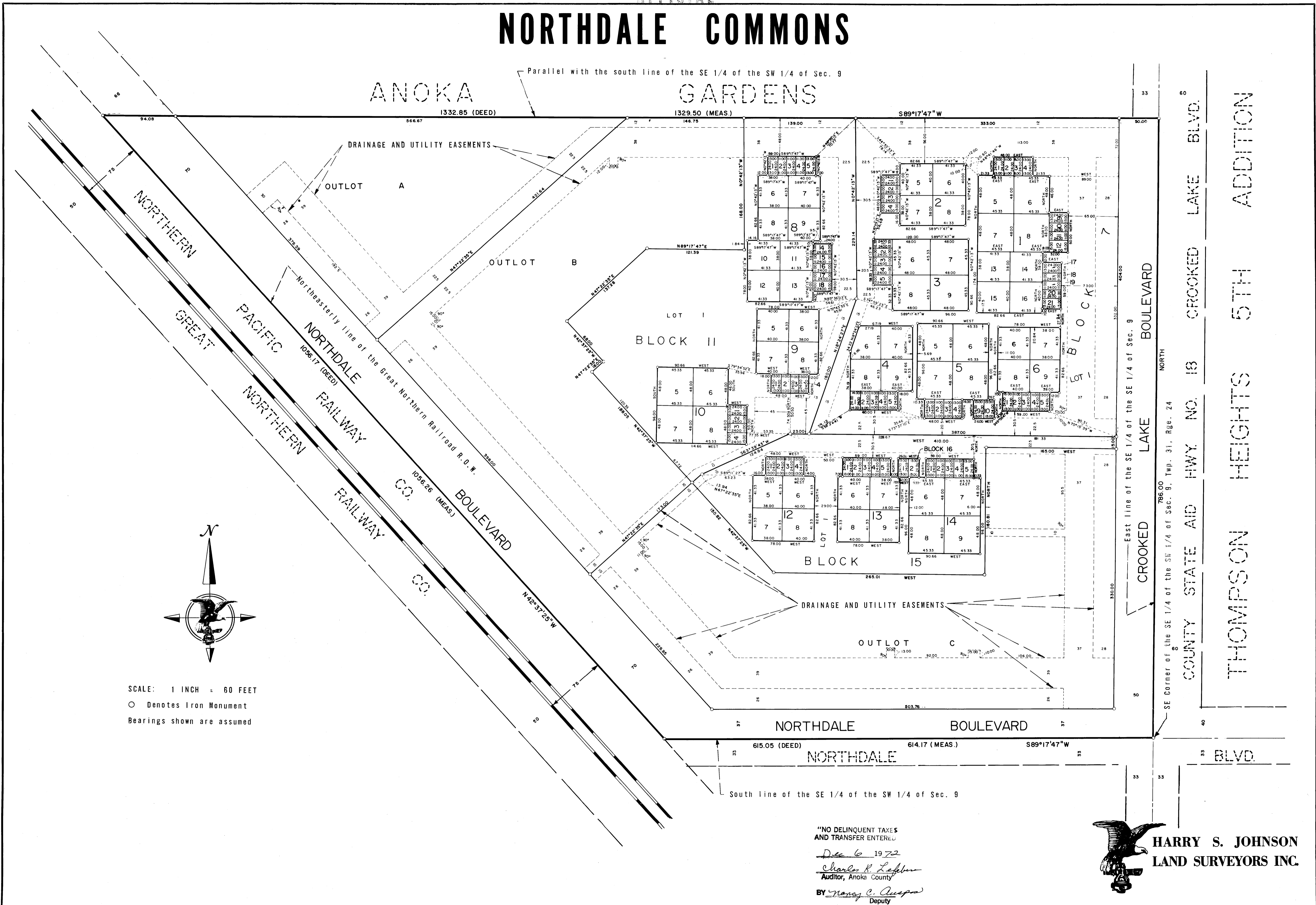
By: Roland W. Anderson Roland W. Anderson
Anoka County Surveyor

380428
OFFICE OF REGISTER OF DEEDS
STATE OF MINNESOTA, COUNTY OF ANOKA }
I hereby certify that the within instrument was filed in this office for record on the DEC 6 day of 1972 A.D., 1972 at 11:50 o'clock A.M., and was duly recorded in book 11 of PLATS page 2
Jean Ueber
Register of Deeds
By Jean Ueber, Deputy

"NO DELINQUENT TAXES AND TRANSFER ENTERED"
Dec. 6 1972
Charles R. Lefson
Auditor, Anoka County
BY Nancy C. Auspa
Deputy



NORTHDAL E COMMONS



ANOKA

GARDENS

NORTHERN PACIFIC RAILWAY
 GREAT NORTHERN RAILWAY CO.
 BOULEVARD



SCALE: 1 INCH = 60 FEET
 O Denotes Iron Monument
 Bearings shown are assumed

"NO DELINQUENT TAXES
 AND TRANSFER ENTERED
 Dec 6 1972
 Charles R. Lofgren
 Auditor, Anoka County
 BY Nancy C. Anspaugh
 Deputy

HARRY S. JOHNSON
 LAND SURVEYORS INC.