

# NORTHEAST METROPOLITAN SCHOOL DISTRICT 916

BK 21 of TORN 942

City of Blaine  
County of Anoka  
Sec. 26, T31, R23

KNOW ALL PERSONS BY THESE PRESENTS: That Northeastern Metropolitan Intermediate School District No. 916, State of Minnesota, a Minnesota special intermediate school district, owner of the following described property:

Outlot I, BLAINE PRESERVE BUSINESS PARK, Anoka County, Minnesota.

Has caused the same to be surveyed and platted as NORTHEAST METROPOLITAN SCHOOL DISTRICT 916 and does hereby dedicate to the public for public use the drainage and utility easements as shown by this plat.

In witness whereof said Northeastern Metropolitan Intermediate School District No. 916, State of Minnesota, a Minnesota special intermediate school district, has caused these presents to be signed by its proper officers this 16 day of April, 2013.

NORTHEASTERN METROPOLITAN INTERMEDIATE SCHOOL DISTRICT NO. 916, STATE OF MINNESOTA

Karen M. Lodico, as School Board Clerk  
Karen M. Lodico

Tracy A. Brunnette, as Chairman of the Board  
Tracy A. Brunnette

STATE OF MINNESOTA  
COUNTY OF Anoka

This instrument was acknowledged before me this 16 day of April, 2013 by Karen M. Lodico, as School Board Clerk and by Tracy A. Brunnette, as Chairman of the Board of Northeastern Metropolitan Intermediate School District No. 916, State of Minnesota, a Minnesota special intermediate school district.

Linda J. Zabrada  
Linda F. Zabrada  
Notary Public, Anoka County, Minnesota  
My Commission Expires 1/31/16

I Daniel W. Obermiller do hereby certify that this plat was prepared by me or under my direct supervision; that I am a duly Licensed Land Surveyor in the State of Minnesota; that this plat is a correct representation of the boundary survey; that all mathematical data and labels are correctly designated on this plat; that all monuments depicted on this plat have been set; that all water boundaries and wet lands, as defined in Minnesota Statutes, Section 505.01, Subd. 3, as of the date of this certificate are shown and labeled on this plat; and all public ways are shown and labeled on this plat.

Dated this 15th day of April, 2013.

Daniel W. Obermiller  
Daniel W. Obermiller, Licensed Land Surveyor  
Minnesota License No. 25341

STATE OF MINNESOTA  
COUNTY OF Anoka

This instrument was acknowledged before me this 15th day of April, 2013 by Daniel W. Obermiller.

Nicole A. Samson  
Nicole A. Samson  
Notary Public, Anoka County, Minnesota  
My Commission Expires Jan 31 2015

City Council, City of Blaine, Minnesota

This plat of NORTHEAST METROPOLITAN SCHOOL DISTRICT 916 was approved and accepted by the City Council of the City of Blaine, Minnesota at a regular meeting thereof held this April day of 4, 2013, and said plat is in compliance with the provisions of Minnesota Statutes, Section 505.03, Subd. 2.

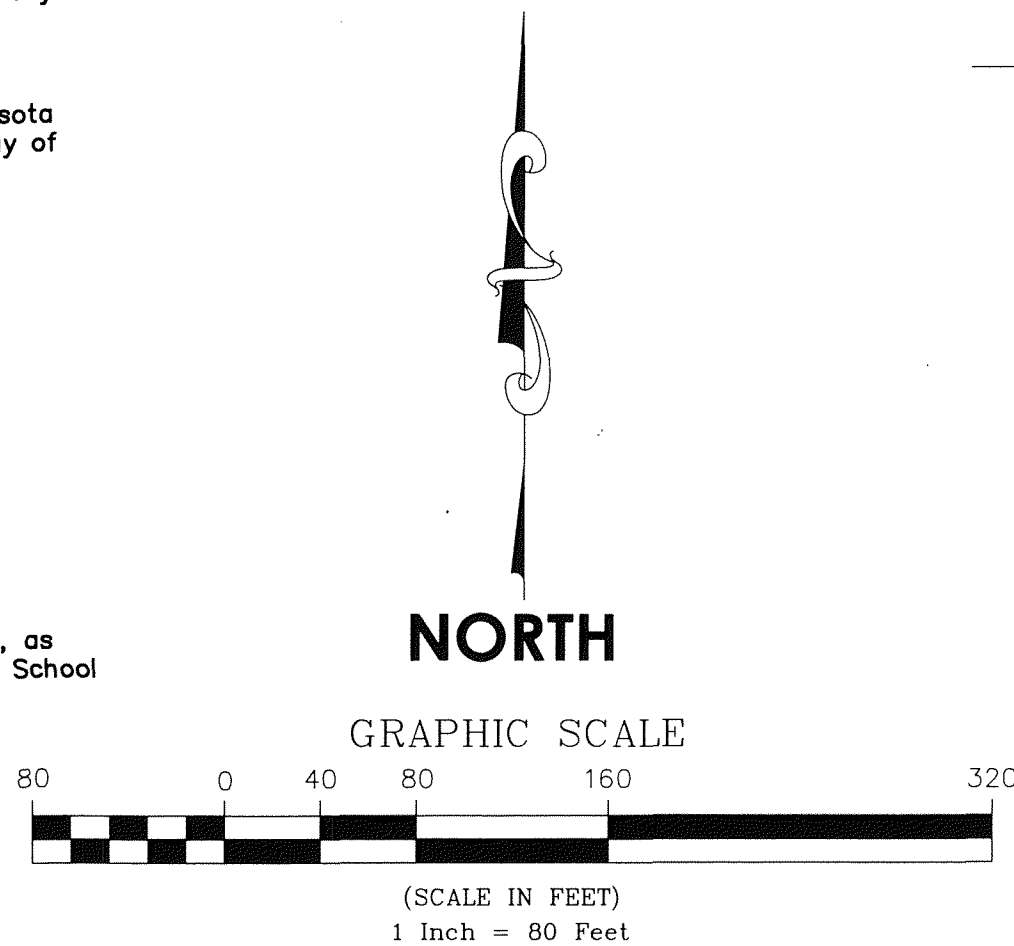
City Council, City of Blaine, Minnesota

By [Signature] Mayor  
By [Signature] Clerk

County Surveyor

I hereby certify that in accordance with Minnesota Statutes, Section 505.021, Subd. II, this plat has been reviewed and approved this 18th day of April, 2013.

Larry D. Holm by Charles F. Betgen, Deputy  
Larry D. Holm  
Anoka County Surveyor

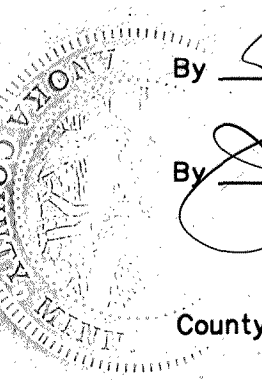
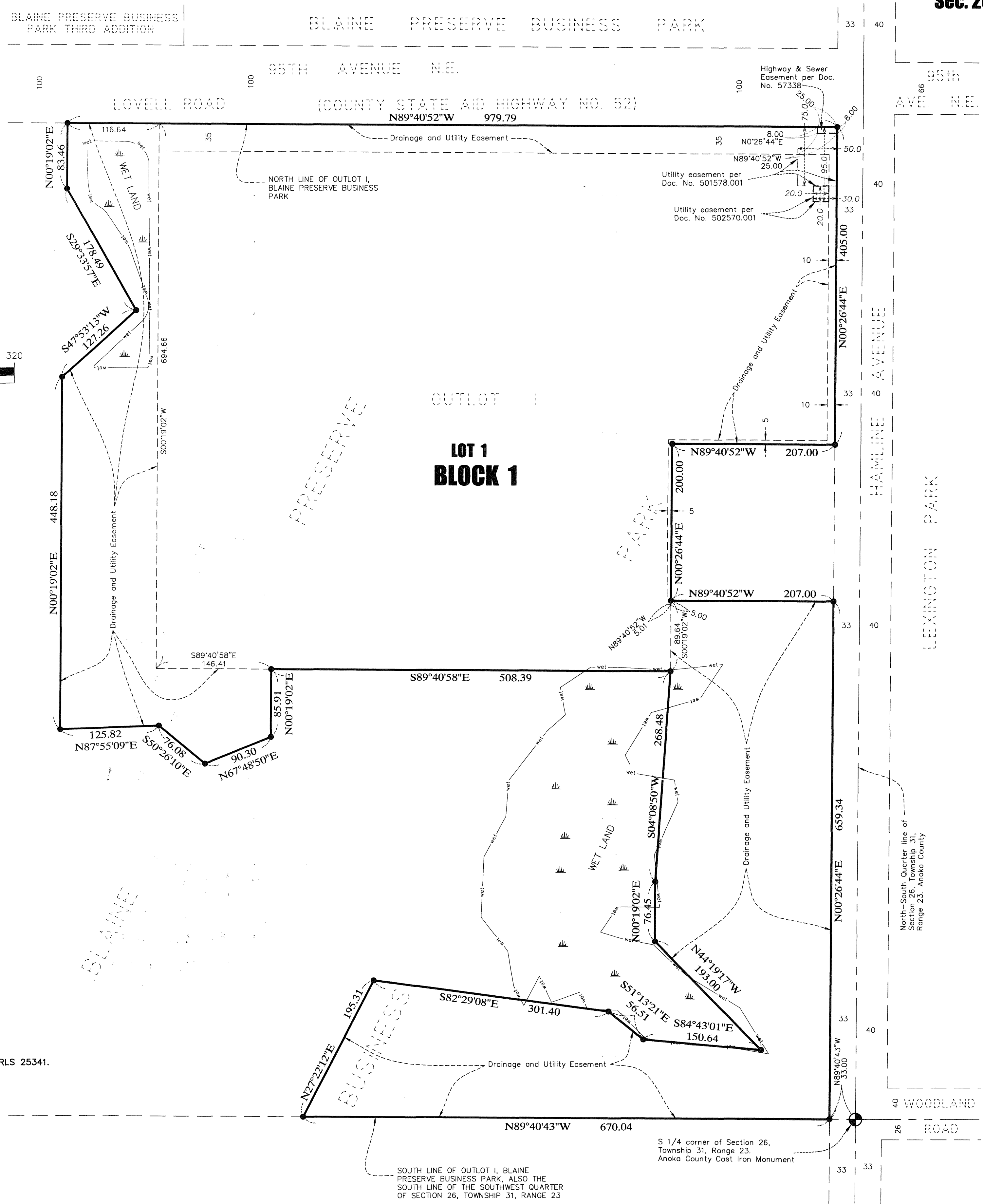


515888.007  
Office of RECORDER/REGISTRAR  
OF TITLES  
STATE OF MINNESOTA COUNTY OF ANOKA  
I hereby certify that the within instrument was filed in  
this office for record on the 17 day of  
May, 2013 at 1:18 o'clock P.M.  
and was duly recorded in book 21 of TORN  
42  
Larry W. Dalien  
Recorder/Registrar of Titles  
By [Signature]  
Deputy

I HEREBY CERTIFY THAT THE CURRENT AND  
DELINQUENT TAXES ON THE LANDS DESCRIBED  
WITHIN ARE PAID AND THE TRANSFER IS  
ENTERED 3/17/2013  
Larry W. Dalien  
PROPERTY UNLACERATOR  
BY [Signature]  
CSPRV

- DENOTES ANOKA COUNTY CAST IRON MONUMENT.
- DENOTES 1/2 INCH FOUND IRON MONUMENT WITH CAP MARKED RLS 25341.
- WET DENOTES WET LAND
- WET DENOTES EDGE OF WET LAND
- - - DENOTES DRAINAGE AND UTILITY EASEMENT

For the purposes of this plat the North line of the Outlot I, BLAINE PRESERVE BUSINESS PARK, Anoka County, Minnesota, is assumed to have a bearing of N89°40'52"W.



**E. G. RUD & SONS, INC.**  
EST. 1977  
Professional Land Surveyors

\$56.00