

# NORTHFORK MEADOWS

City of Ramsey  
County of Anoka  
Section 20, Township 32, Range 25

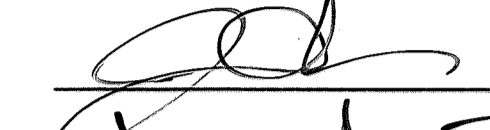
KNOW ALL PERSONS BY THESE PRESENTS: That U.S. Home Corporation, a Delaware corporation, owner of the following described property:

- Outlot A, ALPHA DEVELOPMENT, Anoka County, Minnesota
- AND
- Outlot B, ALPHA DEVELOPMENT 2ND ADDITION, Anoka County, Minnesota

Has caused the same to be surveyed and platted as NORTHFORK MEADOWS and does hereby dedicate to the public for public use the public ways and the drainage and utility easements as created by this plat.


In witness whereof said U.S. Home Corporation, a Delaware corporation, has caused these presents to be signed by its proper officer this 23<sup>rd</sup> day of November, 2021.

Signed: U.S. Home Corporation

  
its \_\_\_\_\_  
(Print Name)

State of Minnesota  
County of Hennepin

This instrument was acknowledged before me on November 23<sup>rd</sup>, 2021 by Jim Hune, its Vice president of U.S. Home Corporation, a Delaware corporation, on behalf of the corporation.

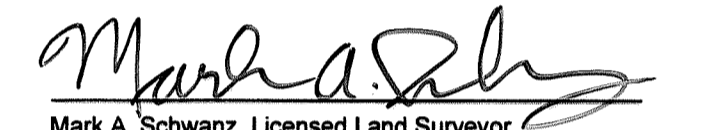
  
(signature)  
Carole Tooley  
(Print)

Notary Public Hennepin County, Minnesota  
My Commission expires Jan 31, 2027

### SURVEYOR'S CERTIFICATE

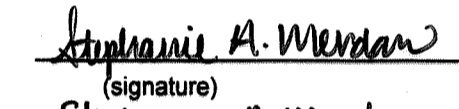
I Mark A. Schwanz do hereby certify that this plat was prepared by me or under my direct supervision; that I am a duly Licensed Land Surveyor in the State of Minnesota; that this plat is a correct representation of the boundary survey; that all mathematical data and labels are correctly designated on this plat; that all monuments depicted on this plat have been, or will be correctly set within one year; that all water boundaries and wet lands, as defined in Minnesota Statutes, Section 505.01, Subd. 3, as of the date of this certificate are shown and labeled on this plat; and all public ways are shown and labeled on this plat.

Dated this 19<sup>th</sup> day of November, 2021.

  
Mark A. Schwanz, Licensed Land Surveyor  
Minnesota License No. 45817

State of Minnesota  
County of Rice

This instrument was acknowledged before me on November 19, 2021 by Mark A. Schwanz.

  
(signature)  
Stephanie A. Wendan  
(Print)

Notary Public, Rice County, Minnesota  
My Commission expires January 31, 2024

### CITY COUNCIL, CITY OF RAMSEY, MINNESOTA

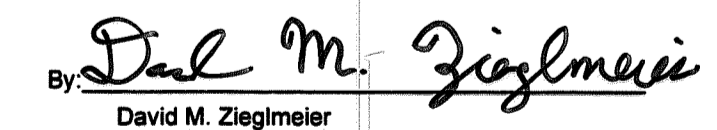
This plat of **NORTHFORK MEADOWS** was approved and accepted by the City Council of the City of Ramsey, Minnesota at a regular meeting thereof held this 14<sup>th</sup> day of September, 2021, and said plat is in compliance with the provisions of Minnesota Statutes, Section 505.03, Subd. 2.

### CITY COUNCIL, CITY OF RAMSEY, MINNESOTA

By:  Mayor  
By:  Clerk

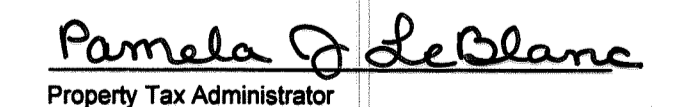
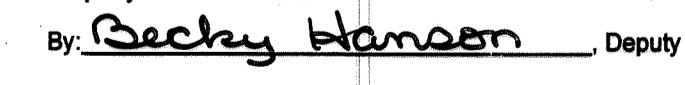
### COUNTY SURVEYOR

I hereby certify that in accordance with Minnesota Statutes, Section 505.021, Subd. 11, this plat has been reviewed and approved this 8<sup>th</sup> day of December, 2021.

By:   
David M. Ziegler  
Anoka County Surveyor

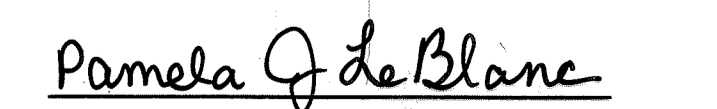
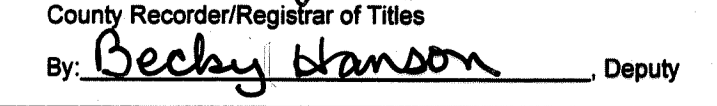
### COUNTY AUDITOR/TREASURER

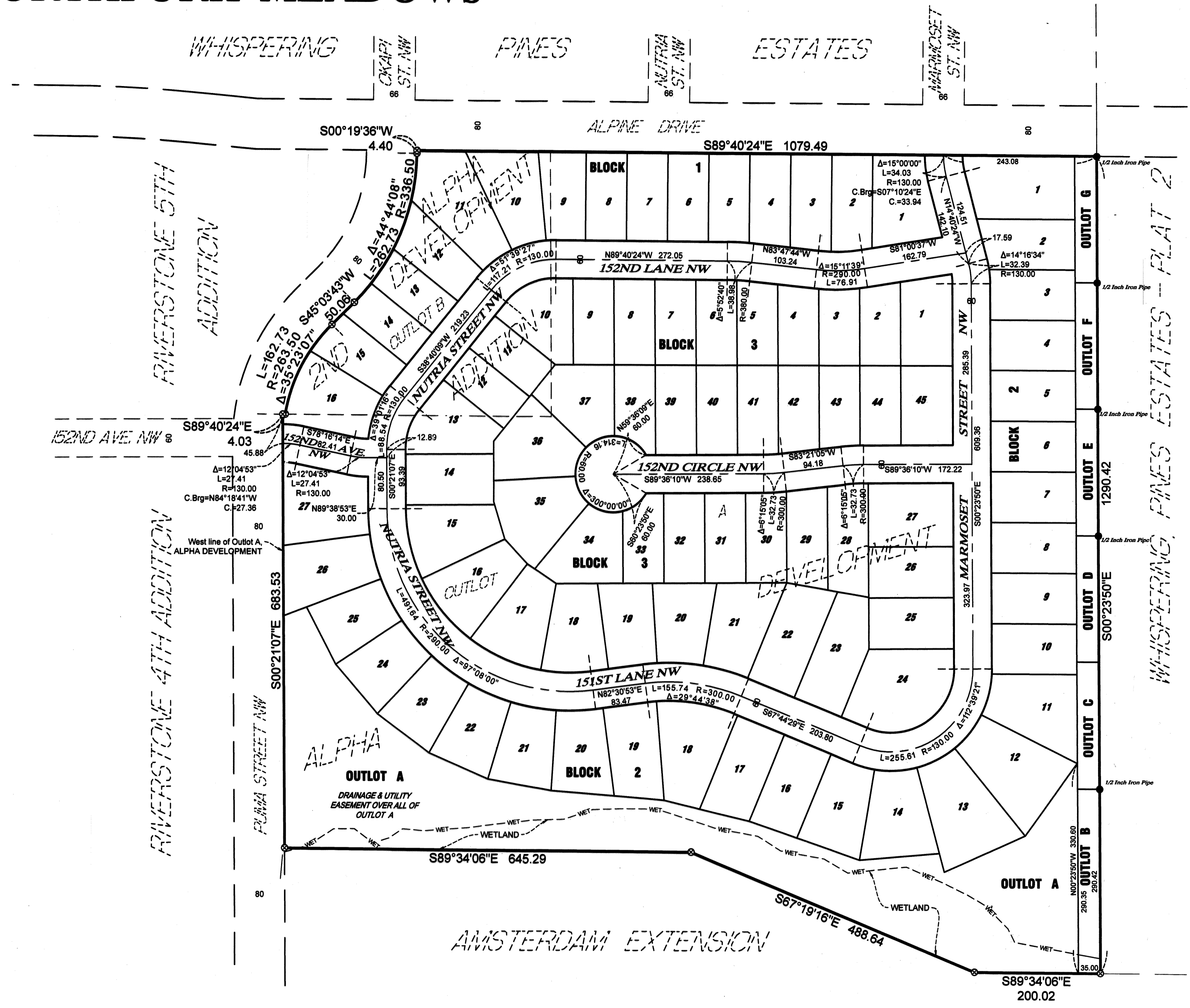
Pursuant to Minnesota Statutes, Section 505.021, Subd. 9, taxes payable in the year 2021 on the land hereinbefore described have been paid. Also, pursuant to Minnesota Statutes, Section 272.12, there are no delinquent taxes and transfer entered this 8 day of Dec, 2021.

  
Pamela J. DeBlanc  
Property Tax Administrator  
By:  Deputy

### COUNTY RECORDER/REGISTRAR OF TITLES

I hereby certify that this plat of **NORTHFORK MEADOWS** was filed in the office of the County Recorder/Registrar of Titles for public record on this 8 day of Dec, 2021, at 9:45 o'clock A.M. and was duly recorded as Document Number 2348404.001.

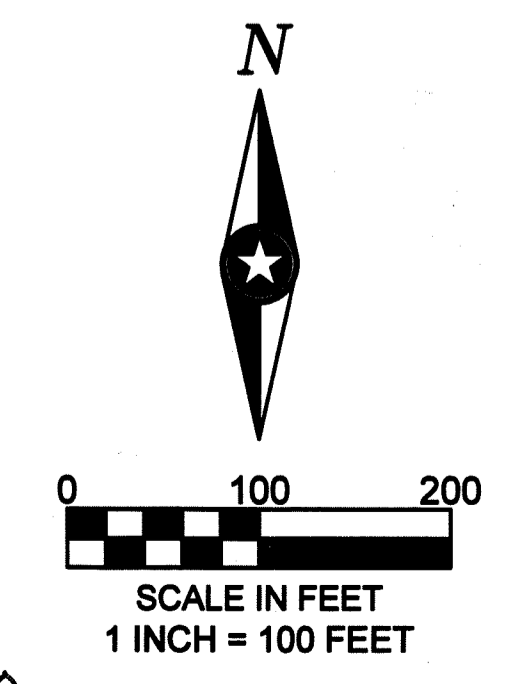
  
Pamela J. DeBlanc  
County Recorder/Registrar of Titles  
By:  Deputy



**BEARING NOTE:**  
For the purposes of this plat, the West line of Outlot A, ALPHA DEVELOPMENT is assumed to bear South 00 degrees 21 minutes 07 seconds East

### LEGEND

- Found Monument 3/4 Inch Rebar with RLS 40361 (unless otherwise noted)
- ⊗ Indicates 1/2 Inch Diameter by 18 Inch Long Solid Iron Pipe Set With Plastic Cap Marked By ISG, License No. 45817 to be set before time of recording.
- WET--- Denotes Wetland delineated by Kjolhaug Environmental Services Company in 2017



\$ 56.00

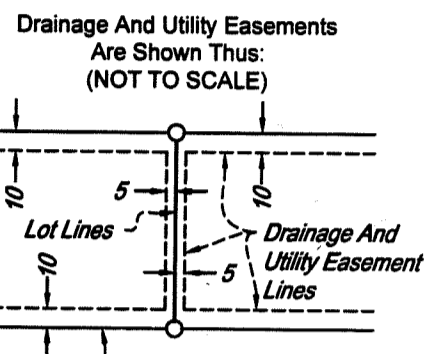


# NORTHFORK MEADOWS

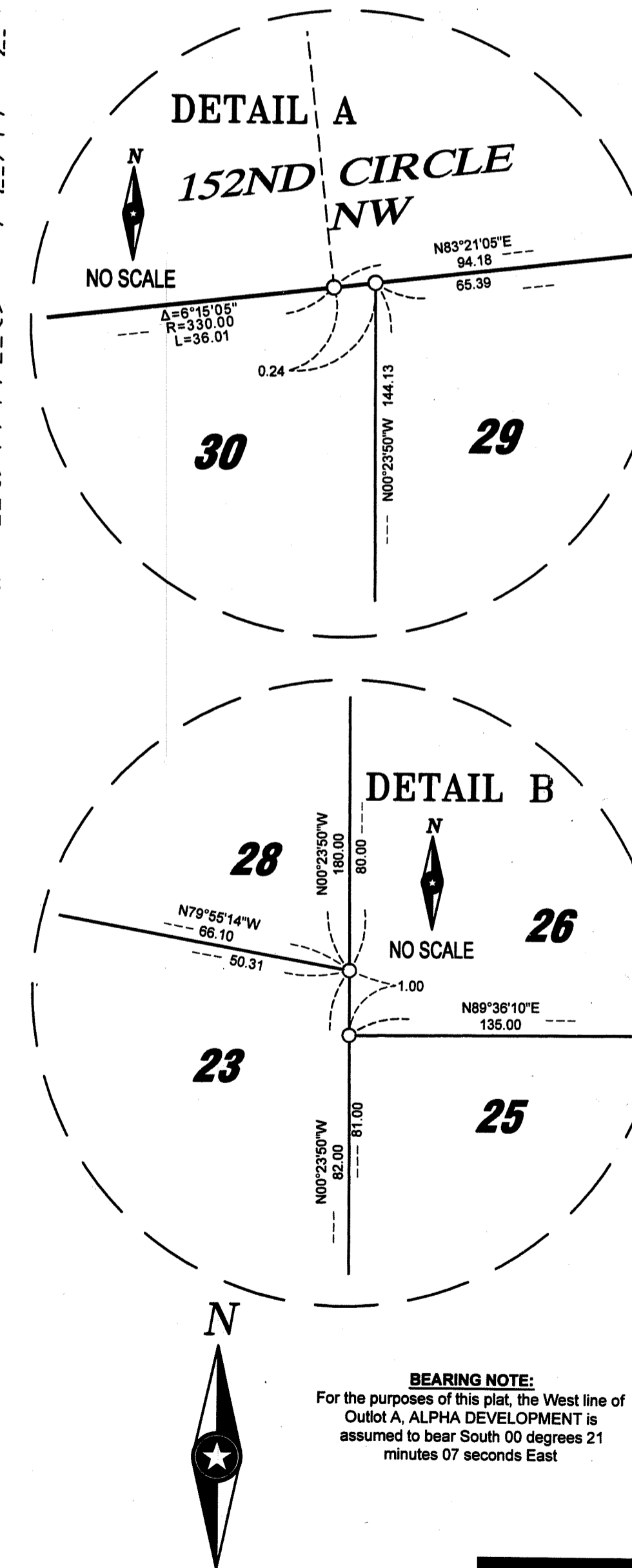
City of Ramsey  
County of Anoka  
Section 20, Township 32, Range 25

### LEGEND

- Found Monument 3/4 Inch Rebar with RLS 40361 (unless otherwise noted)
- ⊙ Indicates 1/2 Inch Diameter by 18 Inch Long Solid Iron Pipe Set With Plastic Cap Marked By ISG, License No. 45817 to be set before time of recording.
- Indicates 1/2 Inch Diameter by 18 Inch Long Solid Iron Pipe Set With Plastic Cap Marked By ISG, License No. 45817 to be set within one year of recording.
- - - - - Denotes Wetland delineated by Kjolhaug Environmental Services Company in 2017



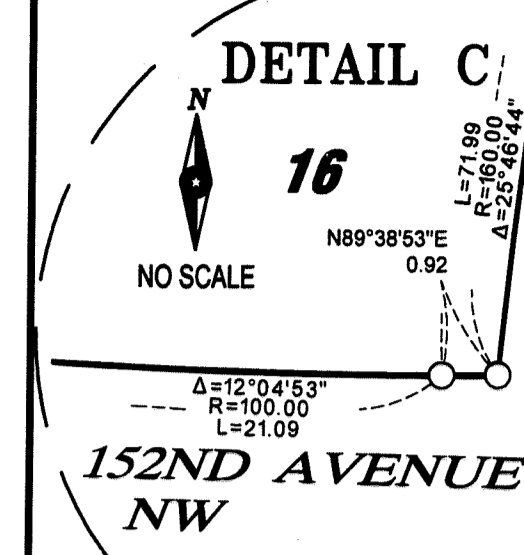
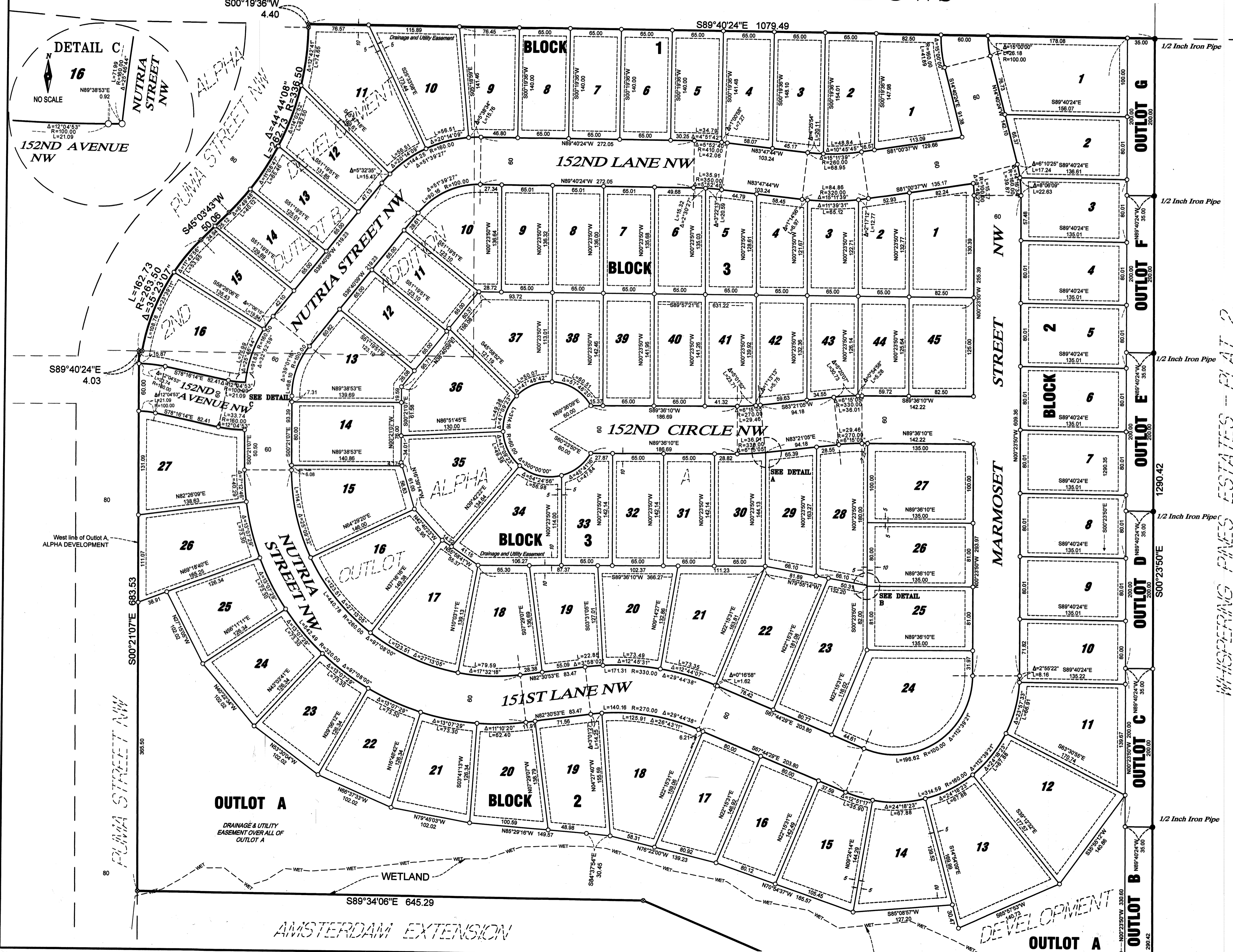
Being 5 feet in width and adjoining lot lines and being 10 feet in width and adjoining right of way lines and rear lot lines, unless otherwise indicated on the plat.



**BEARING NOTE:**  
For the purposes of this plat, the West line of Outlot A, ALPHA DEVELOPMENT is assumed to bear South 00 degrees 21 minutes 07 seconds East

SCALE IN FEET  
1 INCH = 60 FEET

WHISPERING PINES ESTATES - PLAT 2



ISG