

NORTHGLEN 4TH ADDITION

CITY OF ANDOVER, COUNTY OF ANOKA

Office of REGISTER OF DEEDS
STATE OF MINNESOTA
COUNTY OF ANOKA
Filed 12/6/83 2:35 P
By *James Tava*

KNOW ALL MEN BY THESE PRESENTS: That Good Value Homes, Inc., a Minnesota corporation, owner and proprietor of the following described property situated in the County of Anoka, State of Minnesota, to wit:

That part of the North half of the Northwest Quarter of Section 32, Township 32, Range 24, which lies easterly of a line described as follows:

Commencing at the northwest corner of said North half of the Northwest Quarter; thence on an assumed bearing of South 89 degrees 34 minutes 22 seconds East along the north line of said North half of the Northwest Quarter a distance of 794.26 feet to the beginning of the line to be described; thence on a bearing of South a distance of 239.36 feet; thence South 22 degrees 50 minutes 15 seconds East a distance of 191.50 feet; thence South 17 degrees 58 minutes 13 seconds East a distance of 115.53 feet; thence on a bearing of South a distance of 29.50 feet; thence South 74 degrees 32 minutes 50 seconds West a distance of 146.32 feet; thence South 57 degrees 56 minutes 19 seconds West a distance of 65.25 feet; thence on a bearing of South a distance of 40.00 feet; thence on a bearing of West a distance of 130.00 feet; thence on a bearing of South a distance of 485.00 feet; thence on a bearing of East a distance of 110.00 feet; thence South 4 degrees 45 minutes 49 seconds West a distance of 60.21 feet; thence on a bearing of South a distance of 116.89 feet to a point on the south line of said North half of the Northwest Quarter distant 680.85 feet east from the southwest corner of said North half of the Northwest Quarter and said line there terminating; EXCEPT that part contained within the plat of NORTHGLEN 2ND ADDITION, according to the plat of record thereof;

also together with that part of OUTLOT D, NORTHGLEN 2ND ADDITION, according to the plat of record thereof, lying easterly of a line described as follows:

Commencing at the southwest corner of the North half of the Northwest Quarter of Section 32, Township 32, Range 24; thence on an assumed bearing of South 89 degrees 54 minutes 53 seconds East along the south line of said North half of the Northwest Quarter a distance of 680.85 feet to the point of beginning of the line to be described; thence on a bearing of South a distance of 33.11 feet to the south line of said OUTLOT D and said line there terminating.

Have caused the same to be surveyed and platted as NORTHGLEN 4TH ADDITION and do hereby donate and dedicate to the public for the public use forever the Lane, Street, Avenue, and the drainage and utility easements as shown on the plat. In witness whereof, said Good Value Homes, Inc. has caused these presents to be signed by its proper officers this 12 day of October 1983.

Good Value Homes, Inc.:
Donald L. Hardle
Donald L. Hardle, President

Betty R. Hardle
Betty R. Hardle, Secretary-Treasurer

State of Minnesota
County of Anoka

The foregoing instrument was acknowledged before me this 12th day of October 1983 by Donald L. Hardle, President, and Betty R. Hardle, Secretary-Treasurer, of Good Value Homes, Inc., a Minnesota corporation, on behalf of the corporation.

Bonnie J. Andrews
BONNIE J. ANDREWS
NOTARY PUBLIC - MINNESOTA
RAMSEY COUNTY
My Commission Expires July 19, 1990

Bonnie J. Andrews
Notary Public, Ramsey County, Minnesota
My commission expires July 19, 1990

I hereby certify that I have surveyed and platted the property described on this plat as NORTHGLEN 4TH ADDITION; that this plat is a correct representation of said survey; that all distances are correctly shown in feet and hundredths of a foot; that all monuments have been correctly placed in the ground as shown; and that the outside boundary lines are correctly designated on said plat.

Richard H. Cherrier
Richard H. Cherrier, Land Surveyor
Minnesota Registration Number 9064

State of Minnesota
County of Hennepin

The foregoing Surveyor's Certificate was acknowledged before me this 13th day of September 1983 by Richard H. Cherrier, Land Surveyor.

Donald W. Bishman
DONALD W. BISHMAN
NOTARY PUBLIC - MINNESOTA
HENNEPIN COUNTY
My Commission Expires Oct. 20, 1988

Donald W. Bishman
Notary Public, Hennepin County, Minnesota
My commission expires October 20, 1988

ANDOVER, MINNESOTA

This plat was approved and accepted by the City Council of the City of Andover, Minnesota at a regular meeting thereof held this 6th day of September 1983.

CITY COUNCIL OF THE CITY OF ANDOVER, MINNESOTA
Jerry W. Winne, Mayor
Streetly, Clerk
ANOKA COUNTY SURVEYOR

This plat was checked and approved on this 6th day of December 1983.

Roland W. Anderson
Roland W. Anderson
County Surveyor, Anoka County, Minnesota.

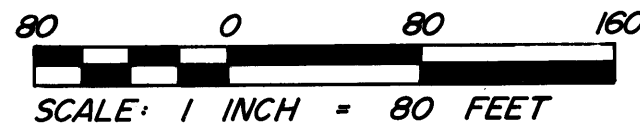
CITY OF ANDOVER
INCORPORATED 1874
MINNESOTA

68359
OFFICE OF COUNTY RECORDS
STATE OF MINNESOTA, COUNTY OF ANOKA
I hereby certify that the within instrument was filed in this office for record on the DEC 6 1983 A.D., 1983 at 2:35 o'clock P.M. and was duly recorded in Book 334E PLATS page 30
Paul J. Omsdahl
County Recorder
W. J. Hallenbeck
Deputy

"NO DELINQUENT TAXES AND TRANSFER ENTERED"
12-6 1983
I HEREBY CERTIFY THAT THE TAXES PAYABLE IN THE YEAR 1983 ON THE LANDS DESCRIBED WITHIN ARE PAID
Donald C. Bailey
Auditor, Anoka County
BY *J.R. Korman*
Deputy

NORTHGLEN 4TH ADDITION

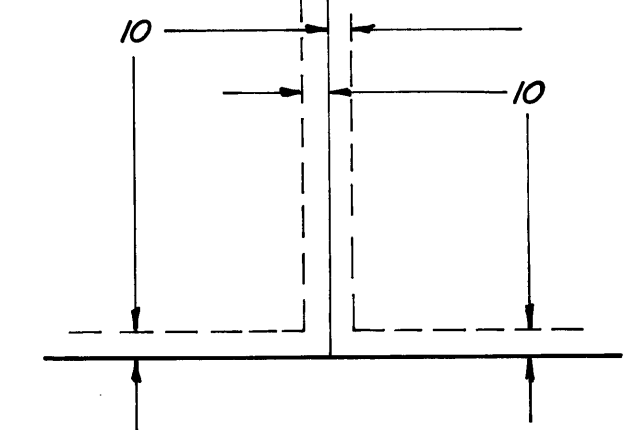
CITY OF ANDOVER, COUNTY OF ANOKA



○ DENOTES IRON MONUMENT

FOR THE PURPOSES OF THIS PLAT THE NORTH LINE OF THE N1/2, NW1/4, SEC. 32, T. 32, R. 24, BEARS N89°34'22"W

DRAINAGE AND UTILITY EASEMENTS ARE SHOWN THUS:



being 10 feet in width and adjoining lot lines as shown on the plat.

