

NORTHGLEN 5TH ADDITION

CITY OF ANDOVER, COUNTY OF ANOKA

KNOW ALL MEN BY THESE PRESENTS: That Good Value Homes, Inc., a Minnesota corporation, owner and proprietor of the following described property situated in the County of Anoka, State of Minnesota, to wit:

That part of OUTLOT D, NORTHGLEN 2ND ADDITION and the north half of the Northwest Quarter of Section 32, Township 32, Range 24 lying westerly of NORTHGLEN 4TH ADDITION, and lying easterly of a line described as follows:

Beginning at a point on the north line of said north half of the Northwest Quarter distant 200.01 feet east from the northwest corner of said north half of the Northwest Quarter; thence southerly parallel with the west line of the Northwest Quarter of said Section 32 to the South line of said OUTLOT D and said line there terminating.

Has caused the same to be surveyed and platted as NORTHGLEN 5TH ADDITION and does hereby donate and dedicate to the public for the public use forever the Lanes, Street, Avenue, and the drainage and utility easements as shown on the plat. In witness whereof, said Good Value Homes, Inc. has caused these presents to be signed by its proper officers this 15th day of May, 1985.

Good Value Homes, Inc.:

Donald L. Hardle
Donald L. Hardle, President

Betty R. Hardle
Betty R. Hardle, Secretary-Treasurer

State of Minnesota
County of ANOKA

The foregoing instrument was acknowledged before me this 15th day of May, 1985 by Donald L. Hardle, President, and Betty R. Hardle, Secretary-Treasurer, of Good Value Homes, Inc., a Minnesota corporation, on behalf of the corporation.

Peggy Kendall
Notary Public, ANOKA County, Minnesota
My commission expires JAN. 21, 1991

PEGGY KENDALL
NOTARY PUBLIC - MINNESOTA
ANOKA COUNTY
My Commission Expires Jan. 21, 1991

and also dedicate to the County of Anoka, the right-of-access onto County Highway No. 116 (as shown on Anoka County Highway Right-of-Way Plat No. 22) from Lots 14 through 21, Block 1, and Lots 1 through 5, and Lot 5A, Block 2.

LYNDEE L. KIRKLE
NOTARY PUBLIC - MINNESOTA
HENNEPIN COUNTY
My Commission Expires FEB. 23, 1991

I hereby certify that I have surveyed and platted the property described on this plat as NORTHGLEN 5TH ADDITION; that this plat is a correct representation of said survey; that all distances are correctly shown in feet and hundredths of a foot; that all monuments have been correctly placed in the ground as shown; and that the outside boundary lines are correctly designated on said plat.

Richard H. Cherrier
Richard H. Cherrier, Land Surveyor
Minnesota Registration Number 9064

State of Minnesota
County of Hennepin

The foregoing Surveyor's Certificate was acknowledged before me this 26th day of April, 1985 by Richard H. Cherrier, Land Surveyor.

Cynthia L. Kinkle
Notary Public, Hennepin County, Minnesota
My commission expires February 23, 1991

ANDOVER, MINNESOTA

This plat was approved and accepted by the City Council of the City of Andover, Minnesota at a regular meeting thereof held this 21st day of May, 1985.

CITY COUNCIL OF THE CITY OF ANDOVER, MINNESOTA
James W. ..., Mayor
..., Clerk
ANOKA COUNTY SURVEYOR

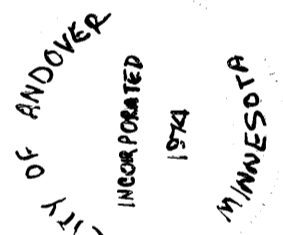
This plat was checked and approved on this 5th day of June, 1985.

Roland W. ...
County Surveyor, Anoka County, Minnesota

"NO DELINQUENT TAXES AND TRANSFER ENTERED"

June 5 1985
Charles R. ...
Auditor, Anoka County
...
Deputy

I HEREBY CERTIFY THAT THE TAXES PAYABLE IN THE YEAR 1985 ON THE LANDS DESCRIBED WITHIN ARE PAID
Donald C. ...
Anoka County Treasurer



675715

142231

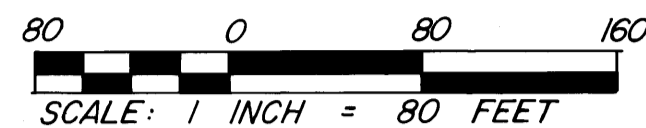
OFFICE OF COUNTY RECORDER
STATE OF MINNESOTA, COUNTY OF ANOKA
I hereby certify that the within instrument was filed in this office for record on the JUN 5 1985 at 2 o'clock P.M., and was filed in book 35 of PLATS page 10
...
County Recorder
By ...
Deputy

Office of ...
JUN 5 1985
...
General ...

CHERRIER - WINTER & ASSOCIATES, INC.
REGISTERED PROFESSIONAL LAND SURVEYORS

NORTHGLEN 5TH ADDITION

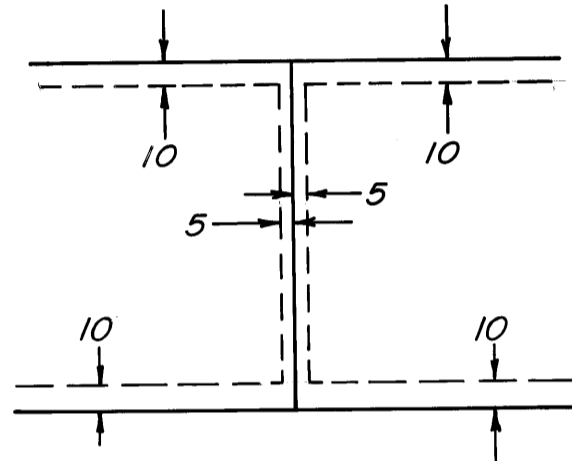
CITY OF ANDOVER, COUNTY OF ANOKA



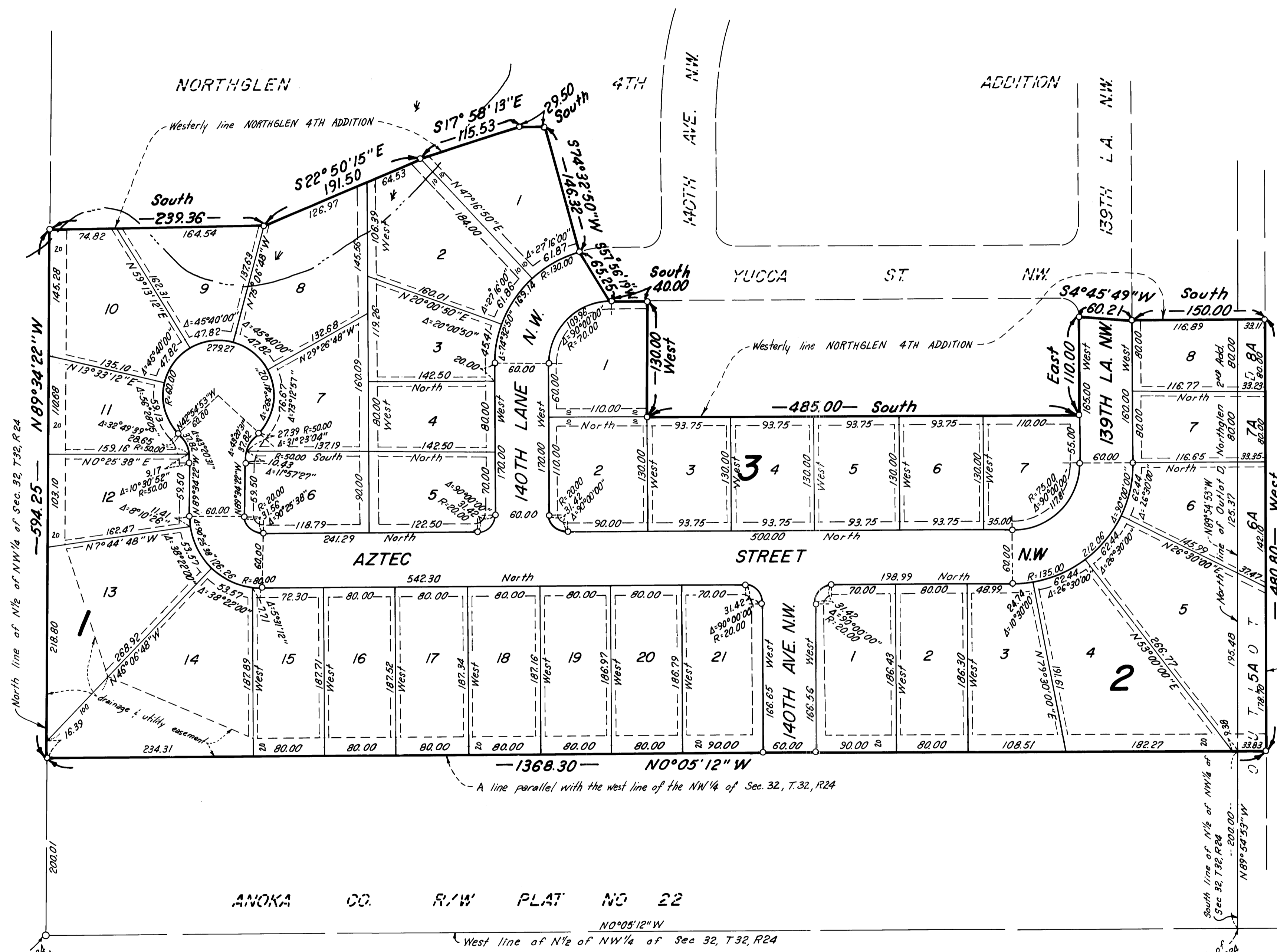
○ DENOTES IRON MONUMENT

FOR THE PURPOSES OF THIS PLAT THE NORTH LINE OF THE N1/2, NW1/4, SEC. 32, T. 32, R. 24, BEARS N89°34'22"W

DRAINAGE AND UTILITY EASEMENTS ARE SHOWN THUS:



being 10 feet in width and adjoining street lines and rear lot lines unless otherwise indicated, and 5 feet in width adjoining side lot lines, as shown on plat.



NW corner of N1/2 of NW1/4 of Sec. 32, T. 32, R. 24 Anoka County Monument

SW corner of N1/2 of NW1/4 of Sec. 32, T. 32, R. 24

ANOKA CO. R/W PLAT NO 22
West line of N1/2 of NW1/4 of Sec 32, T.32, R.24

NORTHGLEN 5TH ADDITION
E X C E P T I O N