

NORTHGLEN

CITY OF ANDOVER, COUNTY OF ANOKA

KNOW ALL MEN BY THESE PRESENTS: That Good Value Homes, Inc., a Minnesota corporation, owner and proprietor, and Lumberman's Investment Corporation, a Texas corporation, mortgagee, of the following described property situate in the County of Anoka, State of Minnesota, to wit:

The Northwest Quarter of the Northeast Quarter, EXCEPT the west 330 feet thereof, Section 32, Township 32, Range 24;

The Southwest Quarter of the Northeast Quarter, Section 32, Township 32, Range 24, EXCEPT the following three parcels of land:

1. The west 330 feet of the Southwest Quarter of the Northeast Quarter of Section 32, Township 32, Range 24;
2. The east 195 feet of the west 525 feet of the south 835 feet of the Southwest Quarter of the Northeast Quarter of Section 32, Township 32, Range 24;
3. The south 408 feet of the Southwest Quarter of the Northeast Quarter lying east of the west 525 feet thereof, Section 32, Township 32, Range 24.

Have caused the same to be surveyed and platted as NORTHGLEN and do hereby donate and dedicate to the public for the public use forever the Avenues, Streets, Lanes, Courts, Park, and the drainage and utility easements as shown on the plat. In witness whereof said Good Value Homes, Inc., a Minnesota corporation, has caused these presents to be signed by its proper officers this 13th day of August 1980. Also, in witness whereof said Lumberman's Investment Corporation, a Texas corporation, has caused these presents to be signed by its proper officers this 15th day of August 1980.

Signed:

Good Value Homes, Inc.:

Donald L. Hardle
Donald L. Hardle, President

Betty R. Hardle
Betty R. Hardle, Secretary-Treasurer

Lumberman's Investment Corporation:

David J. Inman
its Assistant Vice President

State of Minnesota) County of Anoka) The foregoing instrument was acknowledged before me this 13th day of August 1980 by Donald L. Hardle, President, and Betty R. Hardle, Secretary-Treasurer, of Good Value Homes, Inc., a Minnesota corporation, on behalf of the corporation.

KATHLEEN G. ANDRES
NOTARY PUBLIC - MINNESOTA
ANOKA COUNTY
My Commission Expires Feb. 14, 1986

Kathleen G. Andres
Notary Public, Anoka County, Minnesota
My commission expires Feb. 14, 1986

State of Minnesota) County of Anoka)

The foregoing instrument was acknowledged before me this 15th day of August 1980, by David J. Inman, its Assistant Vice President of Lumberman's Investment Corporation, a Texas corporation, on

behalf of the corporation.

KATHLEEN G. ANDRES
NOTARY PUBLIC - MINNESOTA
ANOKA COUNTY
My Commission Expires Feb. 14, 1986

Kathleen G. Andres
Notary Public, Anoka County, Minnesota
My commission expires February 14, 1986

I hereby certify that I have surveyed and platted the property described on this plat as NORTHGLEN; that this plat is a correct representation of said survey; that all distances are correctly shown in feet and hundredths of a foot; that all monuments have been correctly placed in the ground as shown; that the outside boundary lines are correctly designated; and that there are no wet lands to be designated on said plat.

Richard H. Cherrier
Richard H. Cherrier
Land Surveyor, Minnesota Reg. No. 9064

State of Minnesota) County of Hennepin)

The foregoing instrument was acknowledged before me this 11th day of August 1980 by Richard H. Cherrier, Land Surveyor.

DONALD BISHMAN
NOTARY PUBLIC - MINNESOTA
HENNEPIN COUNTY
My Commission Expires Oct. 20, 1981

Donald Bishman
Notary Public, Hennepin County, Minnesota
My commission expires October 20, 1981

ANDOVER, MINNESOTA

This plat was approved and accepted by the City Council of the City of Andover, Minnesota at a regular meeting thereof held this 19th day of August 1980.

CITY COUNCIL OF THE CITY OF ANDOVER, MINNESOTA

James Winick, Mayor
ANOKA COUNTY SURVEYOR

Richard H. Cherrier, Clerk

This plat was checked and approved on this 28th day of August 1980.

Robert W. Anderson
County Surveyor, Anoka County, Minnesota

ENTERED

August 25 1980

Charles R. Lofgren
Auditor, Anoka County

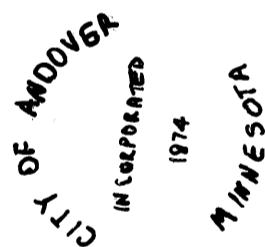
J. Olson Deputy

554848

OFFICE OF COUNTY RECORDER
STATE OF MINNESOTA, COUNTY OF ANOKA

I hereby certify that the within instrument was filed in this office for record on the AUG 28 A.D. 1980 at 12 o'clock P.M., and was duly recorded in book 31 OF PLATS page 25

Dee J. Amundahl
County Recorder
By J. E. Halverson
Deputy

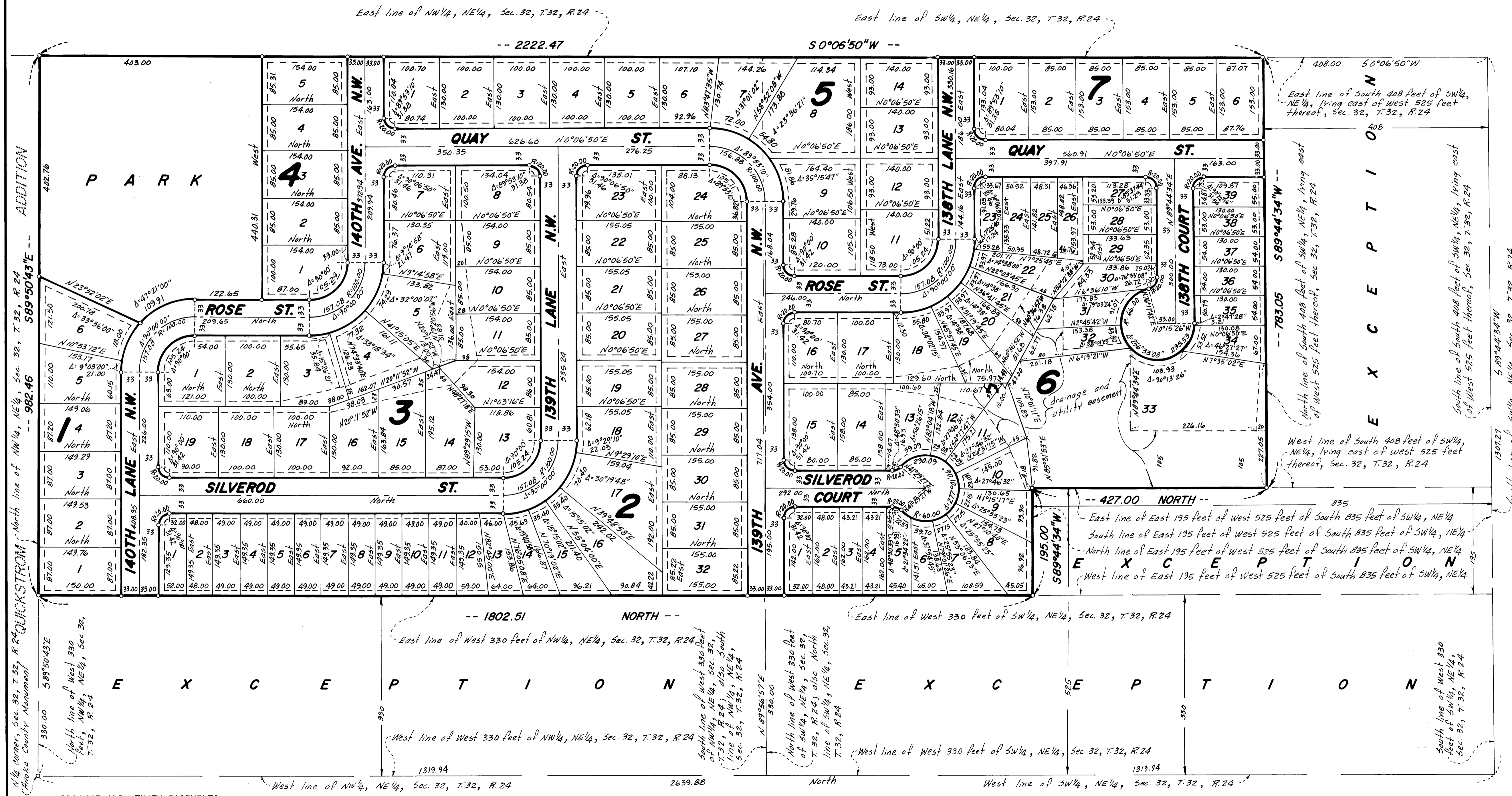


CHERRIER-WINTER & ASSOCIATES, INC.

REGISTERED PROFESSIONAL LAND SURVEYORS

NORTHGLEN

CITY OF ANDOVER, COUNTY OF ANOKA



ADDITION

North line of NW¹/₄, NE¹/₄, Sec. 32, T.32, R.24

589°50'43"E

982.46

QUICKSTON

North line of West 330 feet, NW¹/₄, NE¹/₄, Sec. 32, T.32, R.24

589°50'43"E

DRAINAGE AND UTILITY EASEMENTS ARE SHOWN THUS:

being 10 feet in width and adjoining lot lines, unless otherwise indicated on the plat.



100 0 100 200

SCALE: 1 INCH = 100 FEET

○ DENOTES IRON MONUMENT

BEARINGS SHOWN ARE ASSUMED

CHERRIER-WINTER & ASSOCIATES, INC.

REGISTERED PROFESSIONAL LAND SURVEYORS

SHEET 2 OF 2 SHEETS