

NORTHPOINTE 2ND ADDITION

KNOW ALL PERSONS BY THESE PRESENTS: That Tony Emmerich Construction, Inc., a Minnesota corporation, owner of the following described property:

Outlots B and C, NORTHPOINTE, according to the recorded Plat thereof, Anoka County, Minnesota.

Has caused the same to be surveyed and platted as NORTHPOINTE 2ND ADDITION and does hereby dedicate to the public for public use the public ways and the drainage and utility easements as shown on this plat.

In witness whereof said Tony Emmerich Construction, Inc., a Minnesota corporation, has caused these presents to be signed by its proper officer this 18th day of September, 2014.

TONY EMMERICH CONSTRUCTION, INC.

Anthony J. Emmerich
Anthony J. Emmerich, President

STATE OF Minnesota
COUNTY OF Anoka

This instrument was acknowledged before me on September 18, 2014 by Anthony J. Emmerich, President of Tony Emmerich Construction, Inc., a Minnesota corporation, on behalf of the corporation.

Patricia B. Erickson
Patricia B. Erickson
Notary Public, Isant County, Minnesota
My commission expires January 31, 2015

I, Thomas R. Balluff do hereby certify that this plat was prepared by me or under my direct supervision; that I am a duly Licensed Land Surveyor in the State of Minnesota; that this plat is a correct representation of the boundary survey; that all mathematical data and labels are correctly designated on this plat; that all monuments depicted on this plat have been, or will be correctly set within one year; that all water boundaries and wet lands, as defined in Minnesota Statutes, Section 505.01, Subd. 3, as of the date of this certificate are shown and labeled on this plat; and all public ways are shown and labeled on this plat.

Dated this 18th day of SEPTEMBER, 2014

Thomas R. Balluff
Thomas R. Balluff, Licensed Land Surveyor
Minnesota License No. 40361

STATE OF Minnesota
COUNTY OF Anoka

This instrument was acknowledged before me on September 18th, 2014 by Thomas R. Balluff.

Cynthia J. Morical
Cynthia J. Morical
Notary Public, Hennepin County, MN
My commission expires January 31, 2015

CITY COUNCIL, CITY OF LINO LAKES, MINNESOTA

This plat of NORTHPOINTE 2ND ADDITION was approved and accepted by the City Council of the City of Lino Lakes, Minnesota at a regular meeting thereof held this 27th day of September, 2014, and said plat is in compliance with the provisions of Minnesota Statutes, Section 505.03, Subd. 2.

CITY COUNCIL, CITY OF LINO LAKES, MINNESOTA

By: *[Signature]* Mayor By: *[Signature]* Clerk

COUNTY SURVEYOR

I hereby certify that in accordance with Minnesota Statutes, Section 505.021, Subd. 11, this plat has been reviewed and approved this 18th day of OCTOBER, 2014.

Larry D. Holm
Larry D. Holm
Anoka County Surveyor

COUNTY AUDITOR/TREASURER

Pursuant to Minnesota Statutes, Section 505.021, Subd. 9, taxes payable in the year 2014 on the land hereinbefore described have been paid. Also, pursuant to Minnesota Statutes, Section 272.12, there are no delinquent taxes and transfer entered this 13th day of October, 2014.

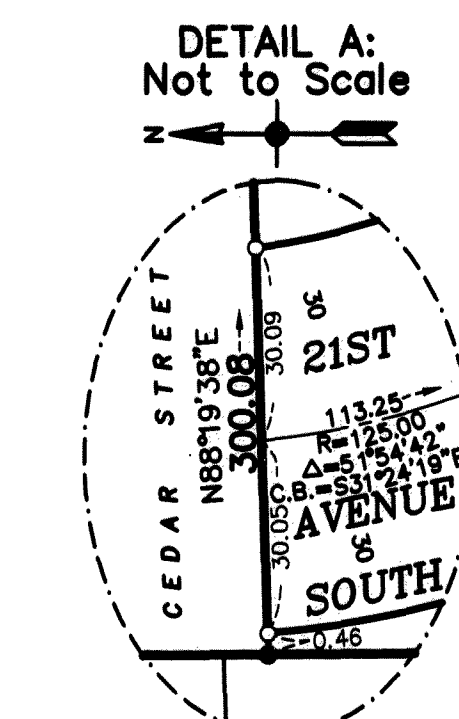
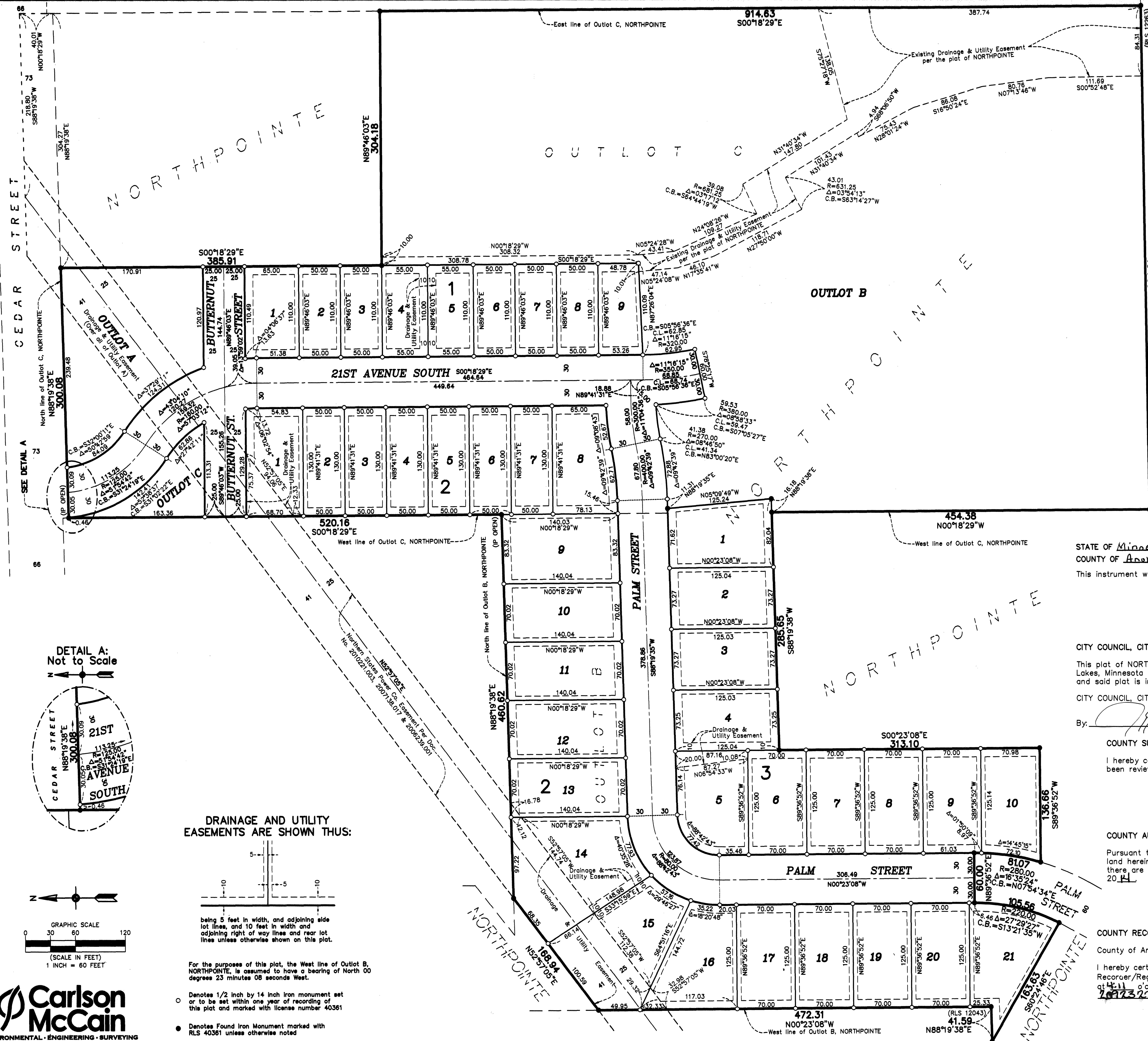
Jonell M Sawyer
Jonell M Sawyer
Property Tax Administrator
By CGT Deputy

COUNTY RECORDER/REGISTRAR OF TITLES

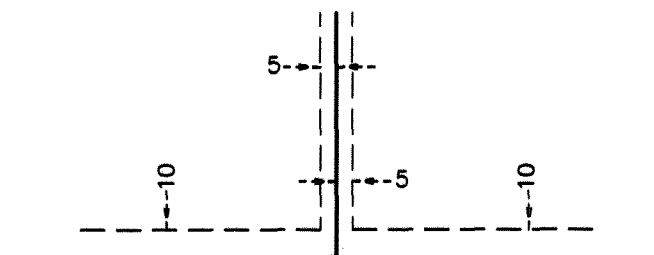
County of Anoka, State of Minnesota

I hereby certify that this plat of NORTHPOINTE 2ND ADDITION was filed in the office of the County Recorder/Registrar of Titles for public record on this 13th day of October, 2014 at 4:11 o'clock P.M. and was duly recorded in Book 171 Page 33, as Document Number 1607327.017

Jonell M Sawyer
Jonell M Sawyer
County Recorder/Registrar of Titles
By CGT Deputy \$56.00



DRAINAGE AND UTILITY EASEMENTS ARE SHOWN THUS:



being 5 feet in width, and adjoining side lot lines, and 10 feet in width and adjoining right of way lines and rear lot lines unless otherwise shown on this plat.

For the purposes of this plat, the West line of Outlot B, NORTHPOINTE, is assumed to have a bearing of North 00 degrees 23 minutes 08 seconds West.

- Denotes 1/2 inch by 14 inch Iron monument set or to be set within one year of recording of this plat and marked with license number 40361
- Denotes Found Iron Monument marked with RLS 40361 unless otherwise noted

