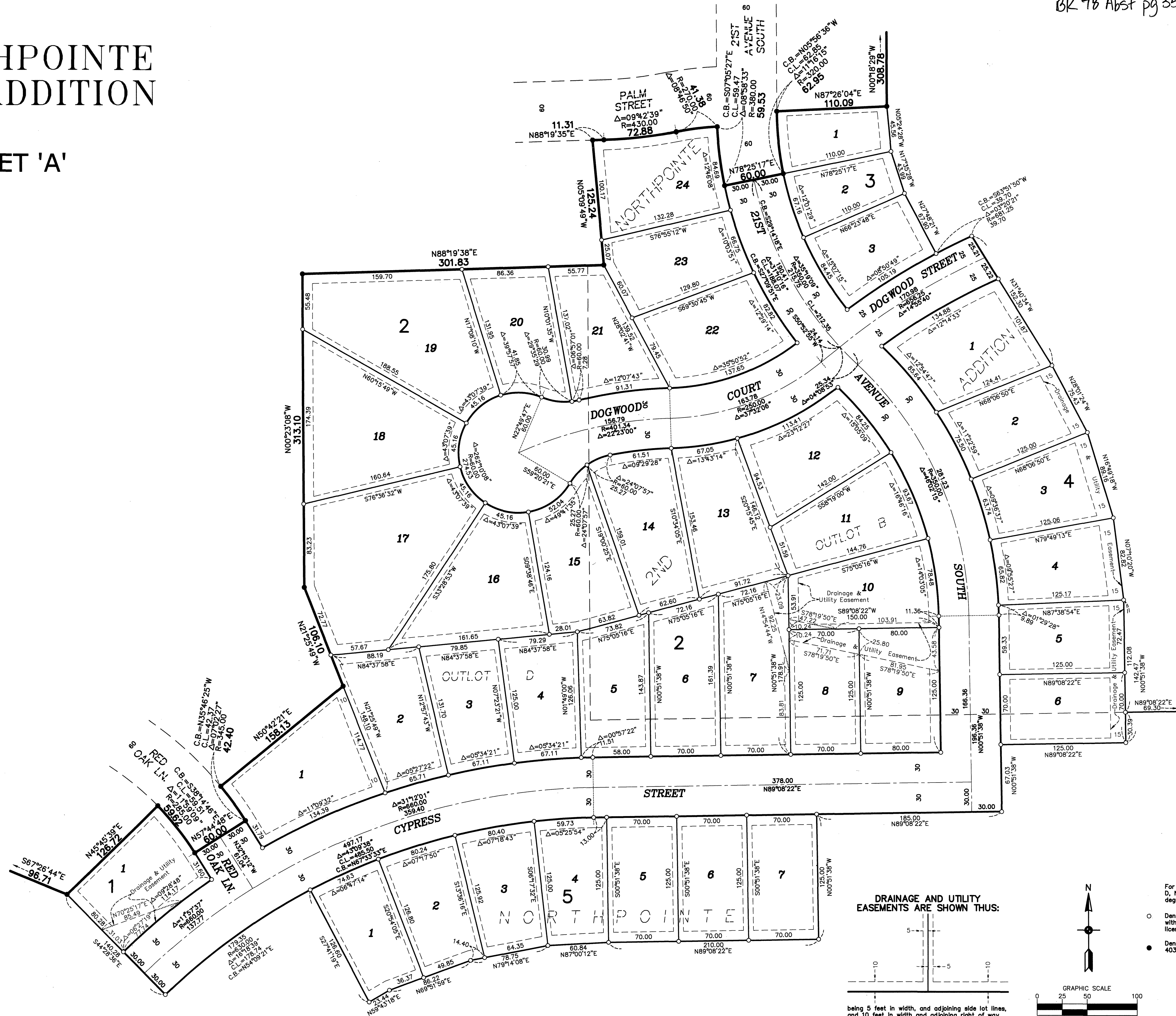


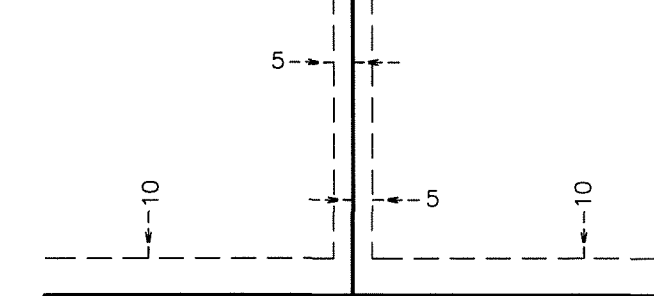


# NORTHPOINTE 3RD ADDITION

## INSET 'A'



DRAINAGE AND UTILITY  
EASEMENTS ARE SHOWN THUS:



being 5 feet in width, and adjoining side lot lines,  
and 10 feet in width and adjoining right of way  
lines and rear lot lines unless otherwise shown on  
this plat.

For the purposes of this plat, the most southerly line of Outlot  
D, NORTHPOINTE is assumed to have a bearing of South 89  
degrees 57 minutes 14 seconds West.

- Denotes 1/2 inch by 14 inch iron monument set or to be set  
within one year of recording of this plat and marked with  
license number 40361
- Denotes Found Iron Monument, marked with license number  
40361 unless otherwise noted

