

NORTHPOINTE 4TH ADDITION

Book 79 of ABST Page 24

CITY OF LINO LAKES
COUNTY OF ANOKA
SEC. 25, TWP. 31, RGE. 22

KNOW ALL PERSONS BY THESE PRESENTS: That Tony Emmerich Construction, Inc., a Minnesota corporation, owner of the following described property:

Outlot B, NORTHPOINTE 3RD ADDITION, according to the recorded plat thereof, Anoka County, Minnesota.

Has caused the same to be surveyed and platted as NORTHPOINTE 4TH ADDITION and does hereby dedicate to the public for public use the public ways and the drainage and utility easements as shown on this plat.

In witness whereof said Tony Emmerich Construction, Inc., a Minnesota corporation, has caused these presents to be signed by its proper officer this 19th day of August, 2016.

TONY EMMERICH CONSTRUCTION, INC.

Baleen K. Roberts
Baleen K. Roberts, President

STATE OF Minnesota
COUNTY OF Anoka

This instrument was acknowledged before me on August 19, 2016 by Baleen K. Roberts, President of Tony Emmerich Construction, Inc., a Minnesota corporation, on behalf of the corporation.

Wendy Gerard
Wendy Gerard

Notary Public, Anoka County, MN
My commission expires 01/31/2020

I Thomas R. Balluff do hereby certify that this plat was prepared by me or under my direct supervision; that I am a duly Licensed Land Surveyor in the State of Minnesota; that this plat is a correct representation of the boundary survey; that all mathematical data and labels are correctly designated on this plat; that all monuments depicted on this plat have been, or will be correctly set within one year; that all water boundaries and wet lands, as defined in Minnesota Statutes, Section 505.01, Subd. 3, as of the date of this certificate are shown and labeled on this plat; and all public ways are shown and labeled on this plat.

Dated this 18th day of August, 2016.

Thomas R. Balluff
Thomas R. Balluff, Licensed Land Surveyor
Minnesota License No. 40361

STATE OF Minnesota
COUNTY OF Anoka

This instrument was acknowledged before me on August 18th, 2016 by Thomas R. Balluff.

Cynthia J. Morsini
Cynthia J. Morsini
Notary Public, Hennepin County, MN
My commission expires Jan. 31, 2020

CITY COUNCIL, CITY OF LINO LAKES, MINNESOTA

This plat of NORTHPOINTE 4TH ADDITION was approved and accepted by the City Council of the City of Lino Lakes, Minnesota at a regular meeting thereof held this 1st day of July, 2016, and said plat is in compliance with the provisions of Minnesota Statutes, Section 505.03, Subd. 2.

CITY COUNCIL, CITY OF LINO LAKES, MINNESOTA

By: *[Signature]* Mayor By: *[Signature]* Clerk

COUNTY SURVEYOR

I hereby certify that in accordance with Minnesota Statutes, Section 505.021, Subd. 11, this plat has been reviewed and approved this 6th day of September, 2016.

By: *Larry D. Hoium* by *Charles F. Lutgen*, Deputy
Larry D. Hoium
Anoka County Surveyor

COUNTY AUDITOR/TREASURER

Pursuant to Minnesota Statutes, Section 505.021, Subd. 9, taxes payable in the year 2016 on the land hereinbefore described have been paid. Also, pursuant to Minnesota Statutes, Section 272.12, there are no delinquent taxes and transfer entered this 6th day of September, 2016.

Jonell M. Sawyer
Jonell M. Sawyer
Property Tax Administrator
By: GNS, Deputy

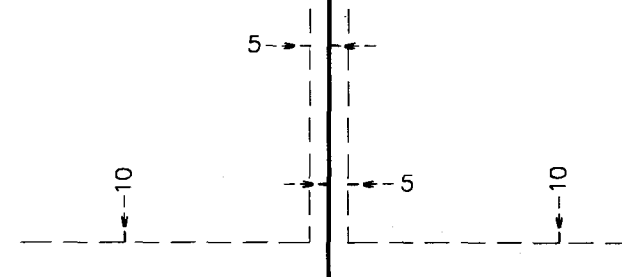
COUNTY RECORDER/REGISTRAR OF TITLES

County of Anoka, State of Minnesota

I hereby certify that this plat of NORTHPOINTE 4TH ADDITION was filed in the office of the County Recorder/Registrar of Titles for public record on this 6th day of September, 2016, at 12:35 o'clock P.M. and was duly recorded in Book 79 Page 24, as Document Number 0147776.001

Jonell M. Sawyer
Jonell M. Sawyer
County Recorder/Registrar of Titles
By: GNS, Deputy

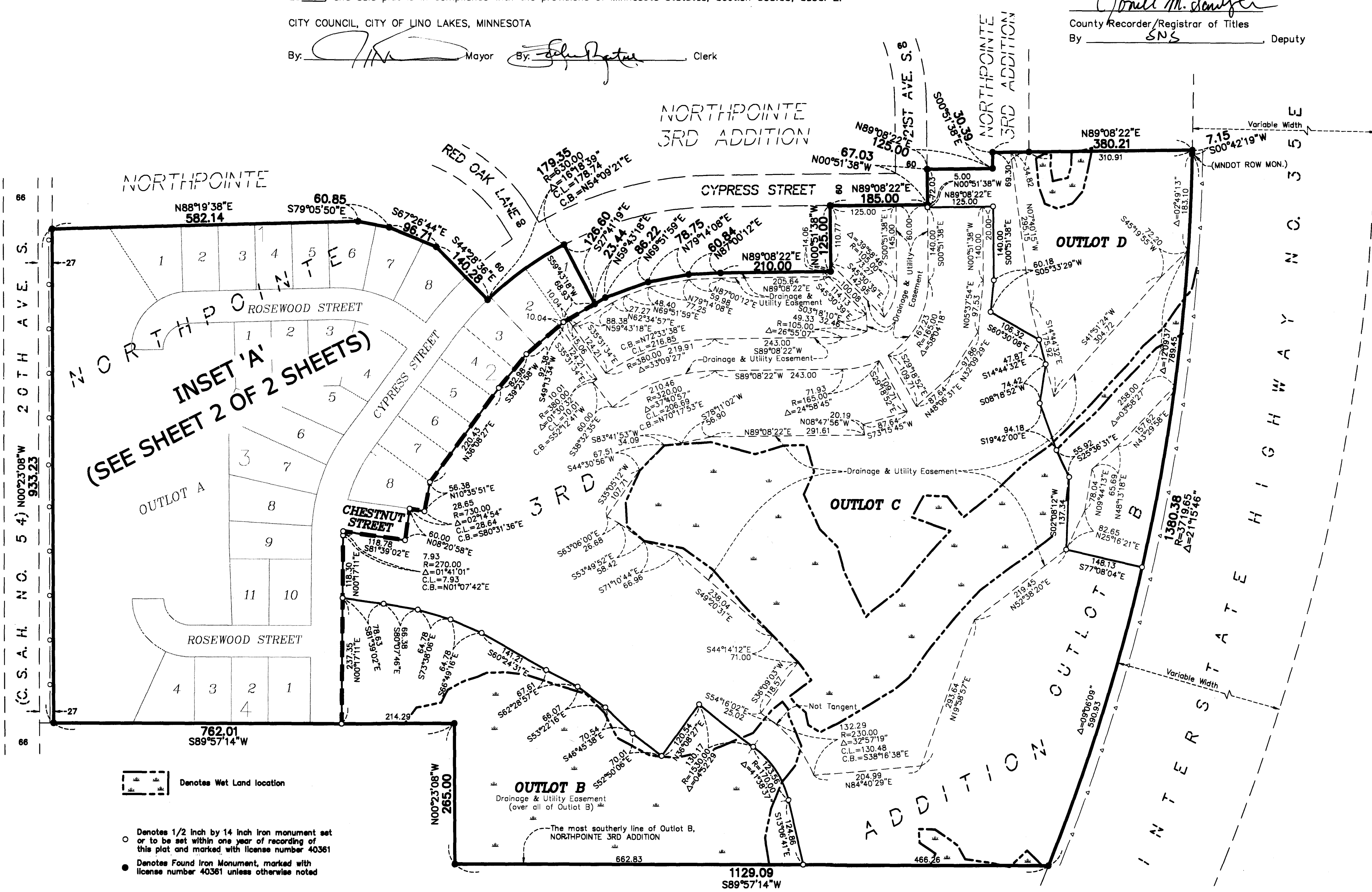
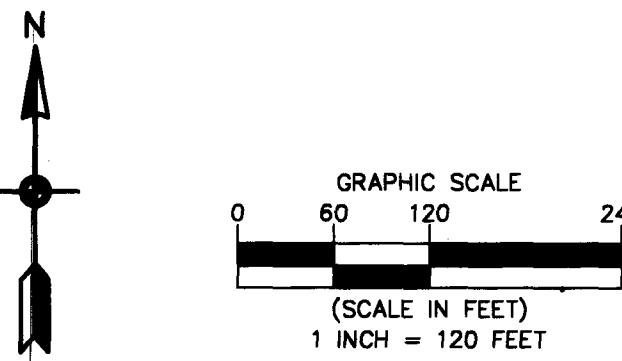
DRAINAGE AND UTILITY EASEMENTS ARE SHOWN THUS: (NOT TO SCALE)



being 5 feet in width, and adjoining side lot lines, and 10 feet in width and adjoining right of way lines and rear lot lines unless otherwise shown on this plat.

Denotes Right of Access dedicated to Anoka County per the plat of NORTHPOINTE
Denotes Right of Access dedicated to the State of Minnesota per the plat of NORTHPOINTE

For the purposes of this plat, the most southerly line of Outlot B, NORTHPOINTE 3RD ADDITION is assumed to have a bearing of South 89 degrees 57 minutes 14 seconds West.

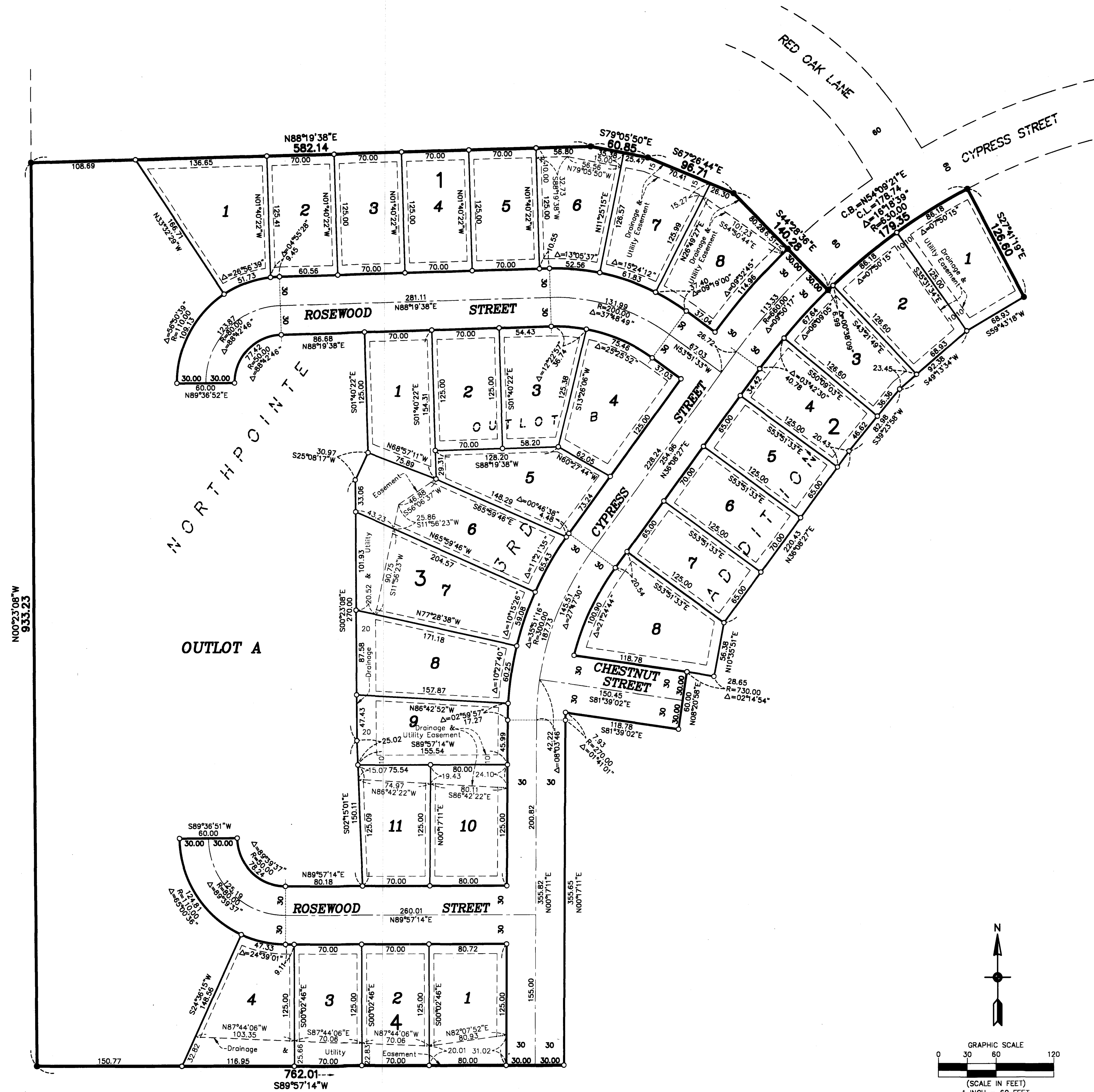


Denotes Wet Land location
Denotes 1/2 inch by 14 inch iron monument set or to be set within one year of recording of this plat and marked with license number 40361
Denotes Found Iron Monument, marked with license number 40361 unless otherwise noted

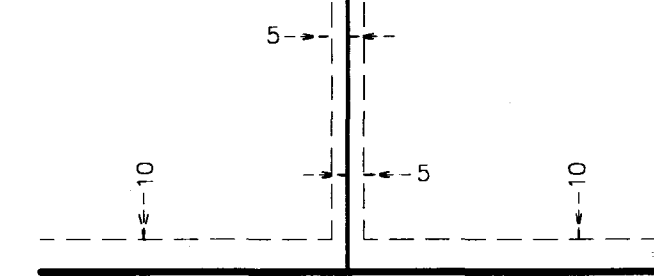
\$56
Carlson McCain
ENVIRONMENTAL • ENGINEERING • SURVEYING

NORTHPOINTE 4TH ADDITION

INSET 'A'



DRAINAGE AND UTILITY EASEMENTS ARE SHOWN THUS:



being 5 feet in width, and adjoining side lot lines, and 10 feet in width and adjoining right of way lines and rear lot lines unless otherwise shown on this plat.

For the purpose of this plat, the most southerly line of Outlot B, NORTHPOINTE 3RD ADDITION is assumed to have a bearing of South 89 degrees 57 minutes 14 seconds West.

○ Denotes 1/2 inch by 1/4 inch iron monument set or to be set within one year of recording of this plat and marked with license number 40361

● Denotes Found Iron Monument, marked with license number 40361 unless otherwise noted

