

NORTHPOINTE 5TH ADDITION

CITY OF LINO LAKES
COUNTY OF ANOKA
SEC. 25, TWP. 31, RGE. 22

KNOW ALL PERSONS BY THESE PRESENTS: That Tony Emmerich Construction, Inc., a Minnesota corporation, owner of the following described property:

Outlot A, NORTHPOINTE 3RD ADDITION, according to the recorded plat thereof, Anoka County, Minnesota, and
Outlot A and Outlot C, NORTHPOINTE 4TH ADDITION, according to the recorded plat thereof, Anoka County, Minnesota.

Has caused the same to be surveyed and platted as NORTHPOINTE 5TH ADDITION and does hereby dedicate to the public for public use the public ways and the drainage and utility easements as shown on this plat.

In witness whereof said Tony Emmerich Construction, Inc., a Minnesota corporation, has caused these presents to be signed by its proper officer this 14th day of June, 2017.

TONY EMMERICH CONSTRUCTION, INC.

Baleen K. Roberts
Baleen K. Roberts, President

STATE of Minnesota
COUNTY of Anoka

This instrument was acknowledged before me on June 14, 2017 by Baleen K. Roberts, President of Tony Emmerich Construction, Inc., a Minnesota corporation, on behalf of the corporation.

Wendy Gerard
Wendy Gerard
Notary Public, Anoka County, MN
My commission expires 01/31/2020

I Thomas R. Balluff do hereby certify that this plat was prepared by me or under my direct supervision; that I am a duly Licensed Land Surveyor in the State of Minnesota; that this plat is a correct representation of the boundary survey; that all mathematical data and labels are correctly designated on this plat; that all monuments depicted on this plat have been, or will be correctly set within one year; that all water boundaries and wet lands, as defined in Minnesota Statutes, Section 505.01, Subd. 3, as of the date of this certificate are shown and labeled on this plat; and all public ways are shown and labeled on this plat.

Dated this 13th day of JUNE, 2017.

Thomas R. Balluff
Thomas R. Balluff, Licensed Land Surveyor
Minnesota License No. 40361

STATE of Minnesota
COUNTY of Anoka

This instrument was acknowledged before me on June 13th, 2017 by Thomas R. Balluff.

Cynthia J. Morical
Cynthia J. Morical
Notary Public, Heavenly County, MD
My commission expires Jan 31, 2020

CITY COUNCIL, CITY OF LINO LAKES, MINNESOTA

This plat of NORTHPOINTE 5TH ADDITION was approved and accepted by the City Council of the City of Lino Lakes, Minnesota at a regular meeting thereof held this 24th day of April, 2017, and said plat is in compliance with the provisions of Minnesota Statutes, Section 505.03, Subd. 2.

CITY COUNCIL, CITY OF LINO LAKES, MINNESOTA

By: *[Signature]* Mayor By: *[Signature]* Clerk

COUNTY SURVEYOR

I hereby certify that in accordance with Minnesota Statutes, Section 505.021, Subd. 11, this plat has been reviewed and approved this 22nd day of JUNE, 2017.

Larry D. Baum
Larry D. Baum
Anoka County Surveyor

COUNTY AUDITOR/TREASURER

Pursuant to Minnesota Statutes, Section 505.021, Subd. 9, taxes payable in the year 2017 on the land hereinbefore described have been paid. Also, pursuant to Minnesota Statutes, Section 272.12, there are no delinquent taxes and transfer entered this 22nd day of JUNE, 2017.

Jonell M. Sawyer
Jonell M. Sawyer
Property Tax Administrator
By: *Amy M. Smith* Deputy

COUNTY RECORDER/REGISTRAR OF TITLES

County of Anoka, State of Minnesota

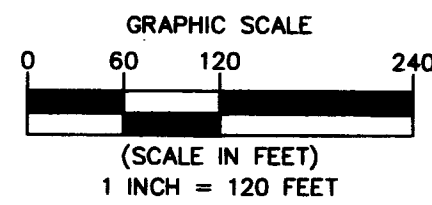
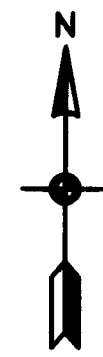
I hereby certify that this plat of NORTHPOINTE 5TH ADDITION, was filed in the office of the County Recorder/Registrar of Titles for public record on this 22nd day of June, 2017, at 11:33 o'clock A.M. and was duly recorded in Book NA Page NA, as Document Number 2173789.002

Jonell M. Sawyer
Jonell M. Sawyer
County Recorder/Registrar of Titles
By: *Amy M. Smith* Deputy

\$56.00

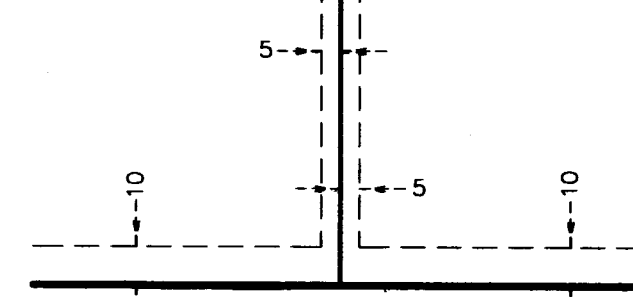
- Denotes 5/8 inch by 14 inch rebar set or to be set within one year of recording of this plat and marked with license number 40361
- Denotes Found Iron Monument, marked with license number 40361 unless otherwise noted

For the purposes of this plat, the South line of Outlot C, NORTHPOINTE 4TH ADDITION is assumed to have a bearing of South 89 degrees 57 minutes 14 seconds West.

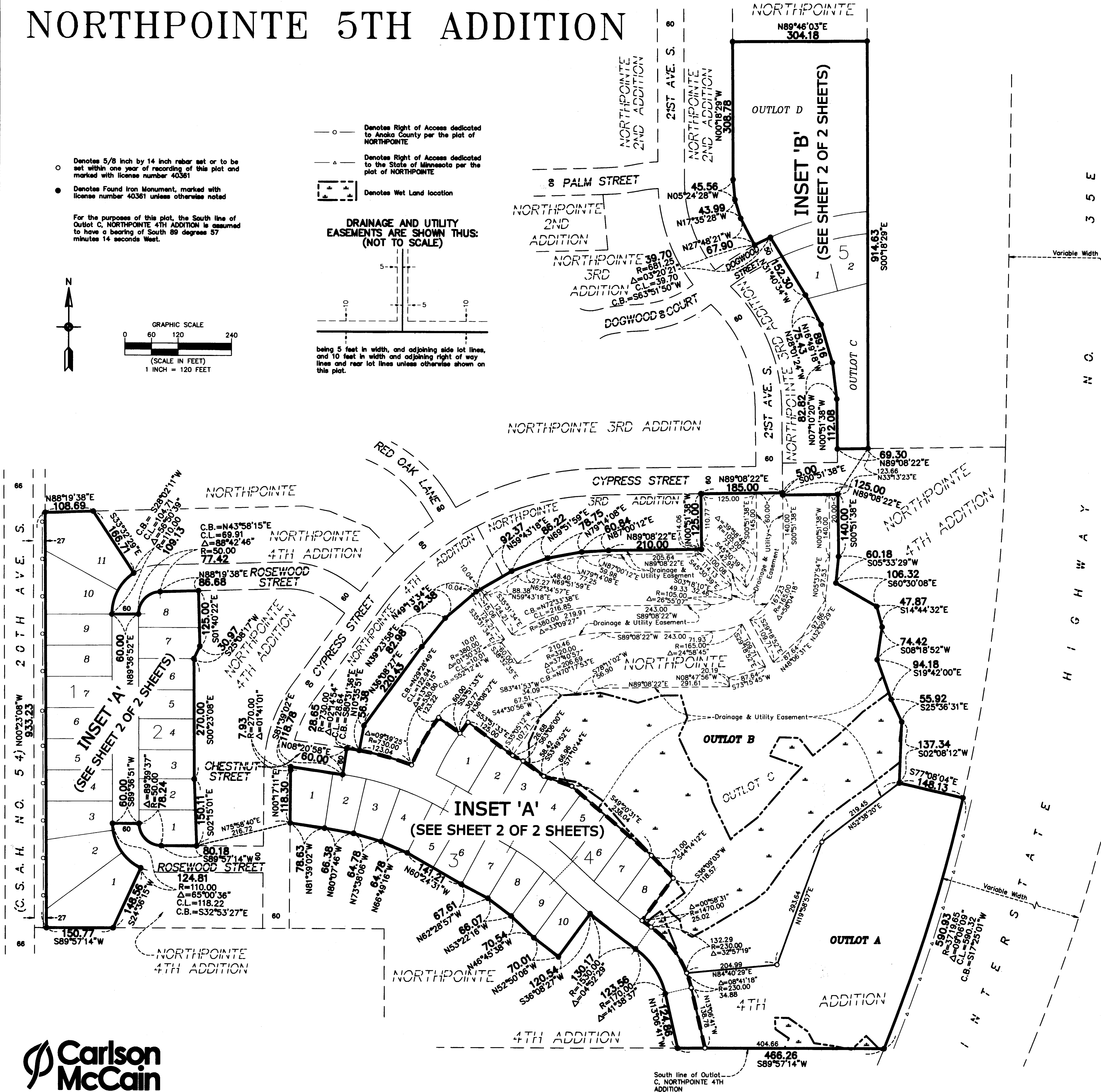


- Denotes Right of Access dedicated to Anoka County per the plat of NORTHPOINTE
- △ Denotes Right of Access dedicated to the State of Minnesota per the plat of NORTHPOINTE
- Denotes Wet Land location

DRAINAGE AND UTILITY EASEMENTS ARE SHOWN THUS: (NOT TO SCALE)

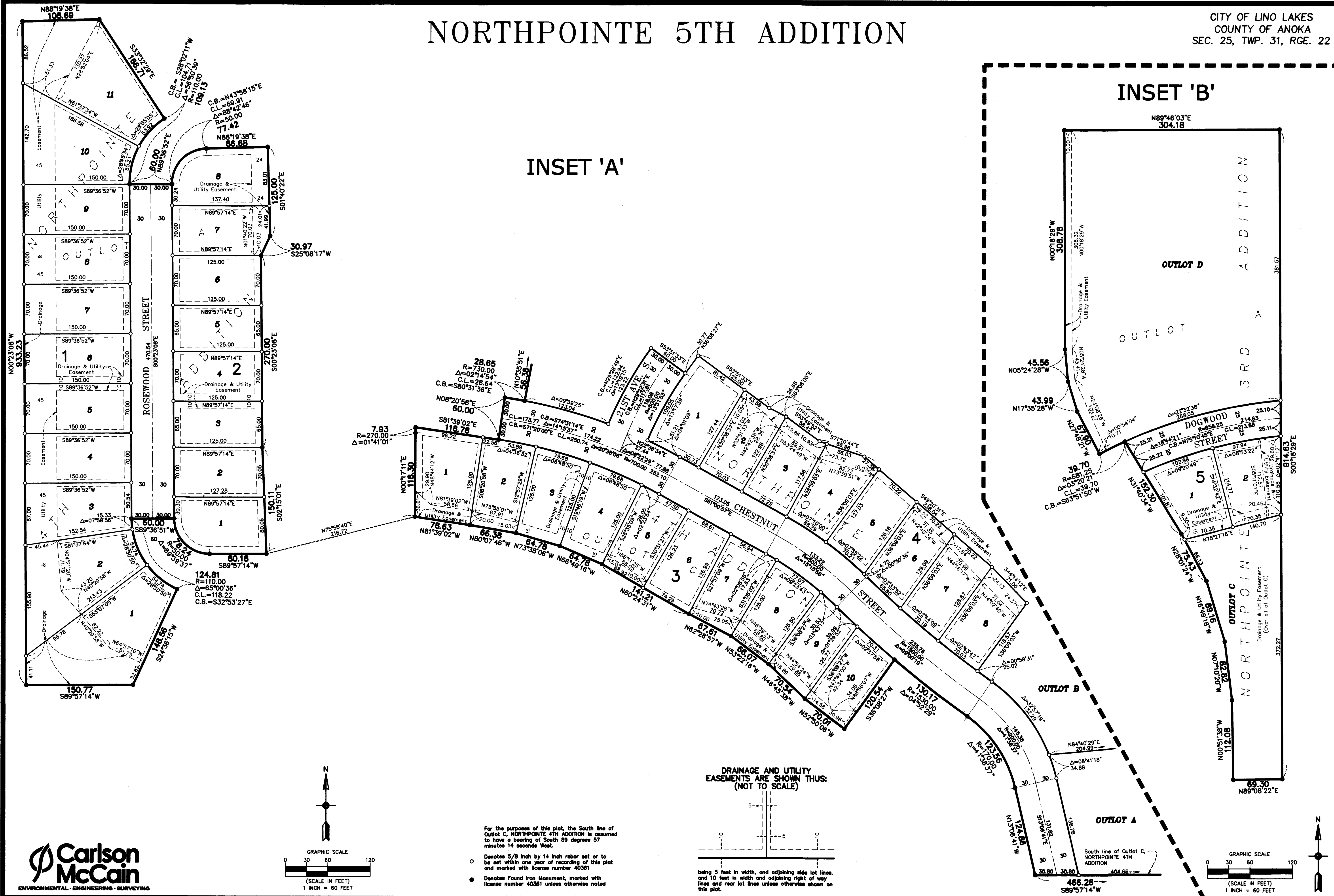


being 5 feet in width, and adjoining side lot lines, and 10 feet in width and adjoining right of way lines and rear lot lines unless otherwise shown on this plat.



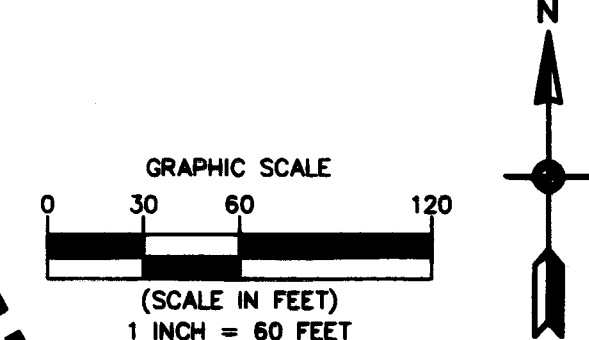
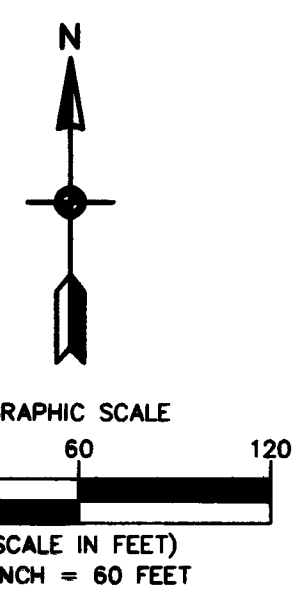
NORTHPOINTE 5TH ADDITION

CITY OF LINO LAKES
COUNTY OF ANOKA
SEC. 25, TWP. 31, RGE. 22



INSET 'A'

INSET 'B'



DRAINAGE AND UTILITY EASEMENTS ARE SHOWN THUS:
(NOT TO SCALE)

For the purposes of this plat, the South line of Outlot C, NORTHPOINTE 4TH ADDITION is assumed to have a bearing of South 89 degrees 57 minutes 14 seconds West.

- Denotes 5/8 inch by 14 inch rebar set or to be set within one year of recording of this plat and marked with license number 40361
- Denotes Found Iron Monument, marked with license number 40361 unless otherwise noted

being 5 feet in width, and adjoining side lot lines, and 10 feet in width and adjoining right of way lines and rear lot lines unless otherwise shown on this plat.

