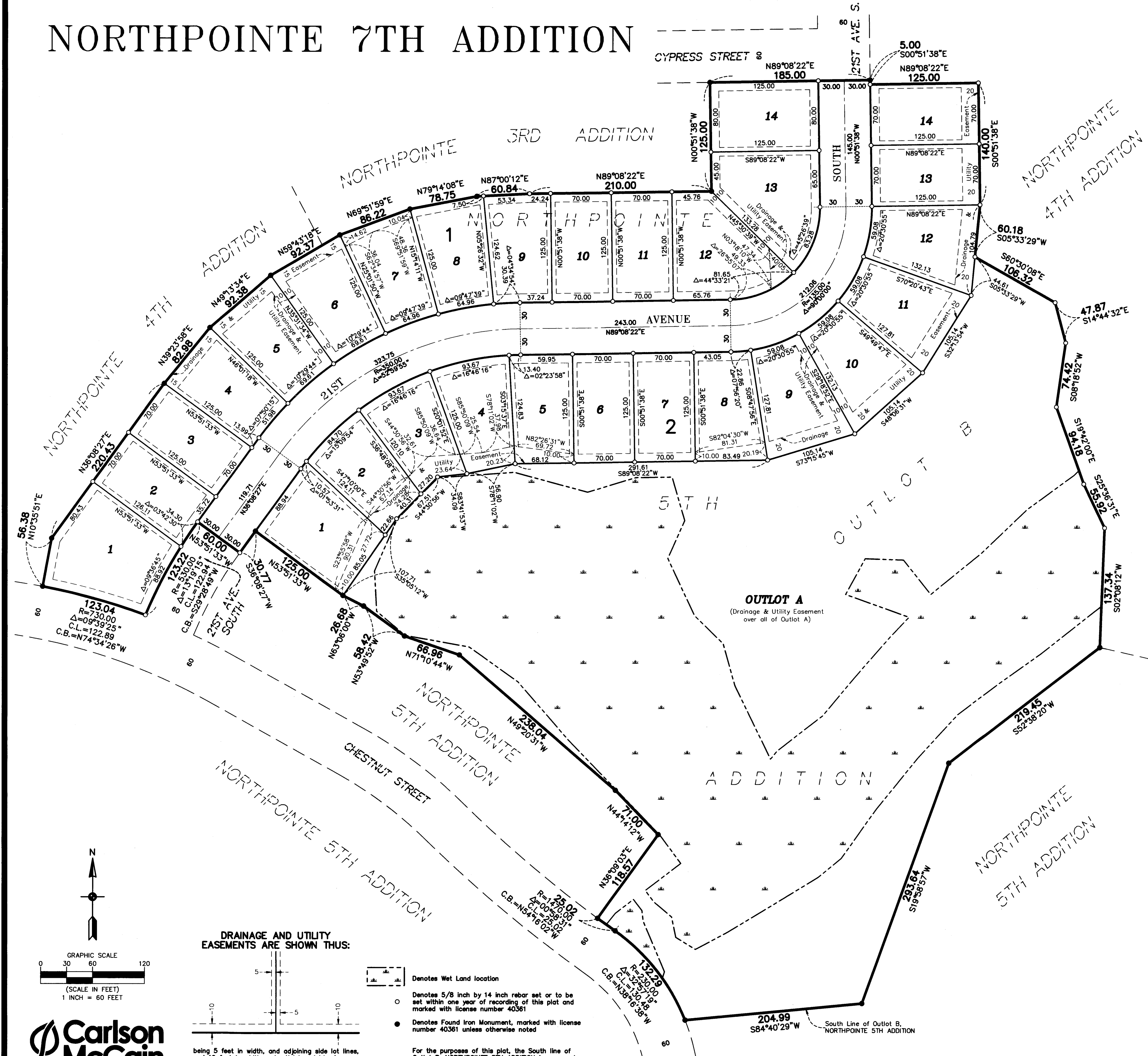


NORTHPOINTE 7TH ADDITION



KNOW ALL PERSONS BY THESE PRESENTS: That Tony Emmerich Construction, Inc., a Minnesota corporation, owner of the following described property:

Outlot B, NORTHPOINTE 5TH ADDITION, according to the recorded plat thereof, Anoka County, Minnesota.

Has caused the same to be surveyed and platted as NORTHPOINTE 7TH ADDITION and does hereby dedicate to the public for public use the public way and the drainage and utility easements as shown on this plat.

In witness whereof said Tony Emmerich Construction, Inc., a Minnesota corporation, has caused these presents to be signed by its proper officer this 30th day of April, 2018.

TONY EMMERICH CONSTRUCTION, INC.

 Baleen K. Roberts, President

STATE OF Minnesota
 COUNTY OF Anoka

This instrument was acknowledged before me on April 30th, 2018 by Baleen K. Roberts, President of Tony Emmerich Construction, Inc., a Minnesota corporation, on behalf of the corporation.

Lawrence Olson
 Notary Public, Anoka County, MN
 My commission expires January 31, 2022

I, Thomas R. Balluff do hereby certify that this plat was prepared by me or under my direct supervision; that I am a duly Licensed Land Surveyor in the State of Minnesota; that this plat is a correct representation of the boundary survey; that all mathematical data and labels are correctly designated on this plat; that all monuments depicted on this plat have been, or will be correctly set within one year; that all water boundaries and wet lands, as defined in Minnesota Statutes, Section 505.01, Subd. 3, as of the date of this certificate are shown and labeled on this plat; and all public ways are shown and labeled on this plat.

Dated this 26th day of April, 2018.

Thomas R. Balluff, Licensed Land Surveyor
 Minnesota License No. 40361

STATE OF Minnesota
 COUNTY OF Anoka

This instrument was acknowledged before me on April 26th, 2018 by Thomas R. Balluff.

Cynthia J. Morical
 Notary Public, Hennepin County, MN
 My commission expires January 31, 2020

CITY COUNCIL, CITY OF LINO LAKES, MINNESOTA

This plat of NORTHPOINTE 7TH ADDITION was approved and accepted by the City Council of the City of Lino Lakes, Minnesota at a regular meeting thereof held this 14th day of May, 2018, and said plat is in compliance with the provisions of Minnesota Statutes, Section 505.03, Subd. 2.

CITY COUNCIL, CITY OF LINO LAKES, MINNESOTA

By:
 Mayor By:
 Clerk

COUNTY SURVEYOR

I hereby certify that in accordance with Minnesota Statutes, Section 505.021, Subd. 11, this plat has been reviewed and approved this 12th day of June, 2018.

By:
 Charles F. Gitzen
 Anoka County Surveyor

COUNTY AUDITOR/TREASURER

Pursuant to Minnesota Statutes, Section 505.021, Subd. 9, taxes payable in the year 2018 on the land hereinbefore described have been paid. Also, pursuant to Minnesota Statutes, Section 272.12, there are no delinquent taxes and transfer entered this 12th day of June, 2018.

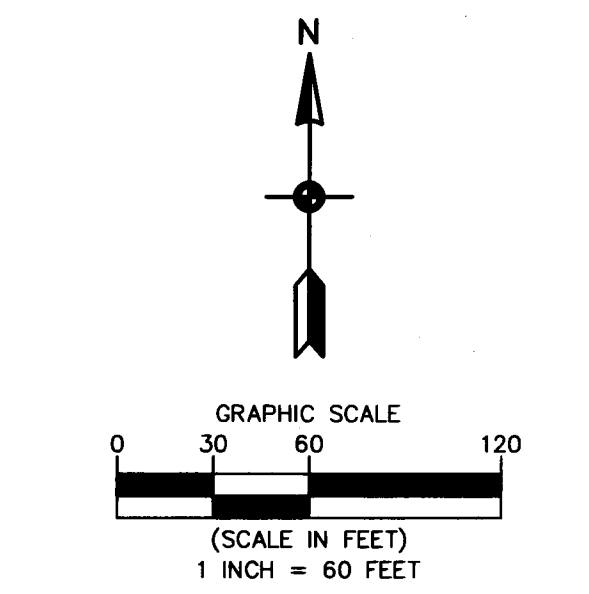
By:
 Jonell M. Sawyer
 Property Tax Administrator
 Deputy

COUNTY RECORDER/REGISTRAR OF TITLES

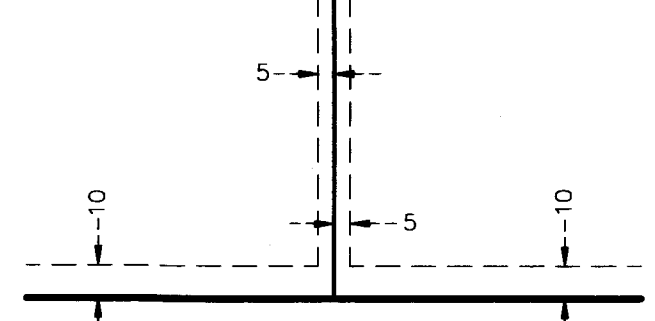
County of Anoka, State of Minnesota

I hereby certify that this plat of NORTHPOINTE 7TH ADDITION was filed in the office of the County Recorder/Registrar of Titles for public record on this 12th day of June, 2018, at 2:38 o'clock P.M. and was duly recorded as Document Number 2201481.003

By:
 Jonell M. Sawyer
 County Recorder/Registrar of Titles
 Deputy



DRAINAGE AND UTILITY EASEMENTS ARE SHOWN THUS:



- Denotes Wet Land location
- Denotes 5/8 inch by 14 inch rebar set or to be set within one year of recording of this plat and marked with license number 40361
- Denotes Found Iron Monument, marked with license number 40361 unless otherwise noted

For the purpose of this plat, the South line of Outlot B, NORTHPOINTE 5TH ADDITION is assumed to have a bearing of South 84 degrees 40 minutes 29 seconds West.

