

NORTHPOINTE 8TH ADDITION

2370978.001

CITY OF LINO LAKES
COUNTY OF ANOKA
SEC. 25, TWP. 31, RGE. 22

KNOW ALL PERSONS BY THESE PRESENTS: That Lino Lakes 72, LLC, a Minnesota limited liability company, owner of the following described property:

Outlot A, NORTHPOINTE 5TH ADDITION, Anoka County, Minnesota

Has caused the same to be surveyed and platted as NORTHPOINTE 8TH ADDITION and does hereby dedicate to the public for public use the drainage and utility easements as shown on this plat.

In witness whereof said Lino Lakes 72, LLC, a Minnesota limited liability company, has caused these presents to be signed by its proper officer this 27 day of JUNE, 2022.

LINO LAKES 72, LLC

James E. Illies
James E. Illies, President/Chief Executive Officer

STATE OF MINNESOTA
COUNTY OF STEARNS

This instrument was acknowledged before me on JUNE 27, 2022 by James E. Illies, President/Chief Executive Officer of Lino Lakes 72, LLC, a Minnesota limited liability company, on behalf of the company.

Mark J. Volkmutz (Signed)
MARK J. VOLKMUTH (Printed)
Notary Public, MINNESOTA
My commission expires 1-31-25

I Thomas R. Balluff do hereby certify that this plat was prepared by me or under my direct supervision; that I am a duly Licensed Land Surveyor in the State of Minnesota; that this plat is a correct representation of the boundary survey; that all mathematical data and labels are correctly designated on this plat; that all monuments depicted on this plat have been, or will be correctly set within one year; that all water boundaries and wet lands, as defined in Minnesota Statutes, Section 505.01, Subd. 3, as of the date of this certificate are shown and labeled on this plat; and all public ways are shown and labeled on this plat.

Dated this 22nd day of JUNE, 2022.

Thomas R. Balluff
Thomas R. Balluff, Licensed Land Surveyor
Minnesota License No. 40361

STATE OF Minnesota
COUNTY OF Anoka

This instrument was acknowledged before me on June 22, 2022 by Thomas R. Balluff.

Cynthia J. Moriceau (Signed)
Cynthia J. Moriceau (Printed)
Notary Public, Hennepin County, Minnesota
My commission expires January 31, 2025

CITY COUNCIL, CITY OF LINO LAKES, MINNESOTA

This plat of NORTHPOINTE 8TH ADDITION was approved and accepted by the City Council of the City of Lino Lakes, Minnesota at a regular meeting thereof held this 14th day of February, 2022, and said plat is in compliance with the provisions of Minnesota Statutes, Section 505.03, Subd. 2.

CITY COUNCIL, CITY OF LINO LAKES, MINNESOTA

By: *J. H. Houtz* Mayor
By: *John Houtz* Clerk

COUNTY SURVEYOR

I hereby certify that in accordance with Minnesota Statutes, Section 505.021, Subd. 11, this plat has been reviewed and approved this 19th day of July, 2022.

By: *David M. Ziegler*
David M. Ziegler
Anoka County Surveyor

COUNTY AUDITOR/TREASURER

Pursuant to Minnesota Statutes, Section 505.021, Subd. 9, taxes payable in the year 2022 on the land hereinbefore described have been paid. Also, pursuant to Minnesota Statutes, Section 272.12, there are no delinquent taxes and transfer entered this 19 day of July, 2022.

Pamela J. LeBlanc
Pamela J. LeBlanc
Property Tax Administrator
By: *Becky Hanson* Deputy

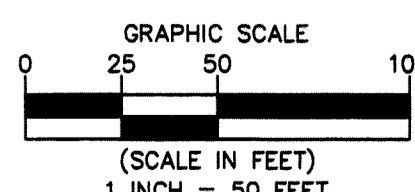
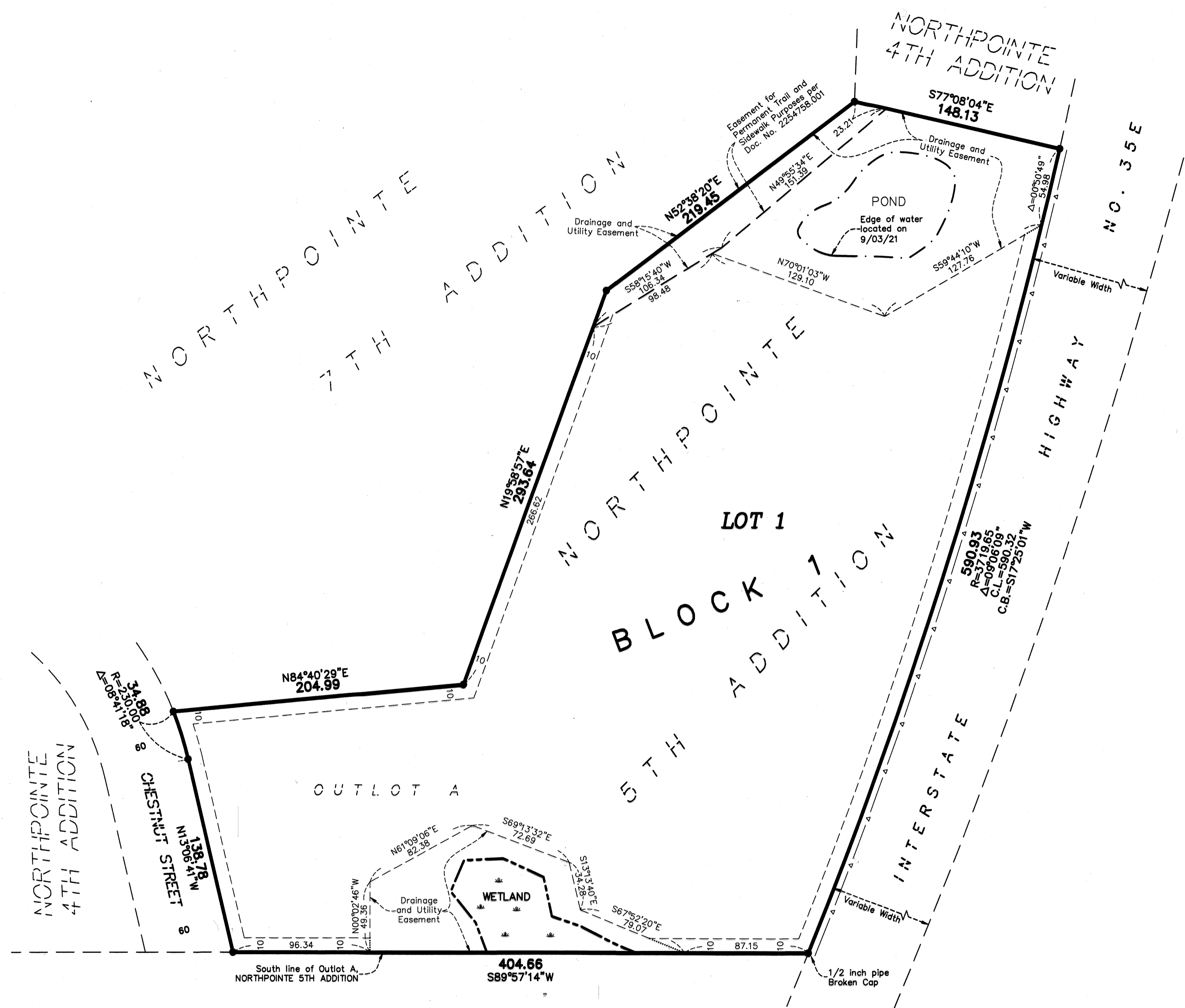
COUNTY RECORDER/REGISTRAR OF TITLES

County of Anoka, State of Minnesota

I hereby certify that this plat of NORTHPOINTE 8TH ADDITION was filed in the office of the County Recorder/Registrar of Titles for public record on this 19 day of July, 2022, at 10:20 o'clock A.M. and was duly recorded as Document Number 2370978.001.

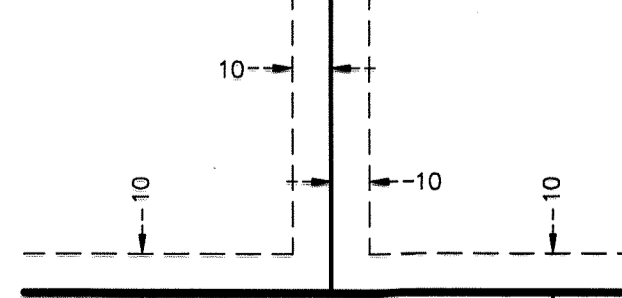
Pamela J. LeBlanc
Pamela J. LeBlanc
County Recorder/Registrar of Titles
By: *Becky Hanson* Deputy

\$56.00



- For the purposes of this plat, the South line of OUTLOT A, NORTHPOINTE 5TH ADDITION is assumed to have a bearing of South 89 degrees 57 minutes 14 seconds West.
- Denotes Found Iron Monument, marked with license number 40361 unless otherwise shown
 - ▲— Denotes Right of Access dedicated to the State of Minnesota per the plat of NORTHPOINTE
 - ▭▭▭▭ Denotes wetland delineated by Kjolhaug Environmental Services Company in September, 2021

DRAINAGE AND UTILITY EASEMENTS ARE SHOWN THUS:



being 5 feet in width, and adjoining side lot lines, and 10 feet in width and adjoining right of way lines and rear lot lines unless otherwise shown on this plat.