

NORTHSTAR 1ST ADDITION

CITY OF COON RAPIDS COUNTY OF ANOKA

KNOW ALL PERSONS BY THESE PRESENTS: That Northstar Development, Inc., a Minnesota corporation, owner and proprietor, and First Bank Coon Rapids, a Minnesota corporation, mortgagee of the following described property situated in the County of Anoka, State of Minnesota, to-wit:

Outlot A, OAKS OF SHENANDOAH 17TH ADDITION, according to the recorded plat thereof, Anoka County, Minnesota.

Have caused the same to be surveyed and platted as NORTHSTAR 1ST ADDITION and do hereby donate and dedicate to the public for public use forever the Street as shown on the plat. Also dedicating the drainage and/or utility easements as shown on the plat. In witness whereof said Northstar Development, Inc. has caused these presents to be signed by its proper officer this 7 day of DECEMBER, 1989. Also in witness whereof said First Bank Coon Rapids, has caused these presents to be signed by its proper officer this 7 day of DECEMBER, 1989.

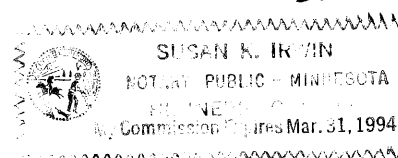
NORTHSTAR DEVELOPMENT, INC.

Steven L. Boie
Steven L. Boie, President

FIRST BANK COON RAPIDS

Neil J. Polaski
Neil J. Polaski, Senior Vice President

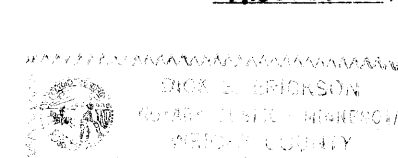
STATE OF MINNESOTA
COUNTY OF ANOKA



The foregoing instrument was acknowledged before me this 19 day of October, 1989, by Steven L. Boie, President of Northstar Development, Inc., a Minnesota corporation, on behalf of the corporation.

Susan K. Jurek
Notary Public, Anoka County, Minnesota
My Commission expires 3/31/94

STATE OF MINNESOTA
COUNTY OF ANOKA



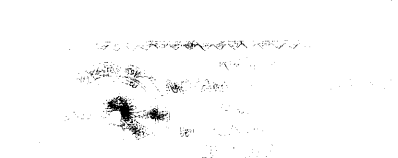
The foregoing instrument was acknowledged before me this 7th day of DECEMBER, 1989, by Neil J. Polaski, Senior Vice President of First Bank Coon Rapids, a Minnesota corporation, on behalf of the corporation.

Dick E. Erickson
Notary Public, WRIGHT County, Minnesota
My Commission expires 5-14-95

I hereby certify that I have surveyed and platted the land described in the dedication on this plat as NORTHSTAR 1ST ADDITION; that the plat is a correct representation of said survey; that all distances are correctly shown on said plat in feet and hundredths of a foot; that the monuments have been correctly placed in the ground as shown; that the outside boundaries are correctly designated on said plat; and that there are no wet lands or public highways to be designated on said plat other than as shown thereon.

Jeffrey N. Caine
Jeffrey N. Caine, Registered Land Surveyor
Minnesota Registration No. 12251

STATE OF MINNESOTA
COUNTY OF ANOKA



The surveyors certificate was acknowledged before me a Notary Public, this 19th day of October, 1989, by Jeffrey N. Caine, Land Surveyor

Nancy X. Caine
Notary Public, Anoka County, Minnesota
My Commission expires 9-22-92

CITY OF COON RAPIDS

The annexed plat of NORTHSTAR 1ST ADDITION was approved by the Planning Commission of the City of Coon Rapids, Minnesota this 17th day of OCTOBER, 1989.

By: Dorcas M. Naewe, Chairman

The annexed plat of NORTHSTAR 1ST ADDITION was approved by the City Council of the City of Coon Rapids, Minnesota, at a regular meeting thereof held this 24th day of OCTOBER, 1989. If applicable, the written comments and recommendations of the Commissioner of Transportation and the County Highway Engineer have been received by the city or the prescribed 30 day period has elapsed without receipt of such comments and recommendations, as provided by Minn. Statutes, Section 505.03, Subd. 2.

By: Robert B. Lewis Mayor By: Betty Backus Clerk

This plat has been checked and approved this 8th day of Dec, 1989.

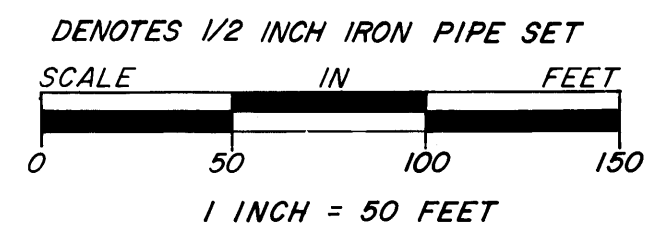
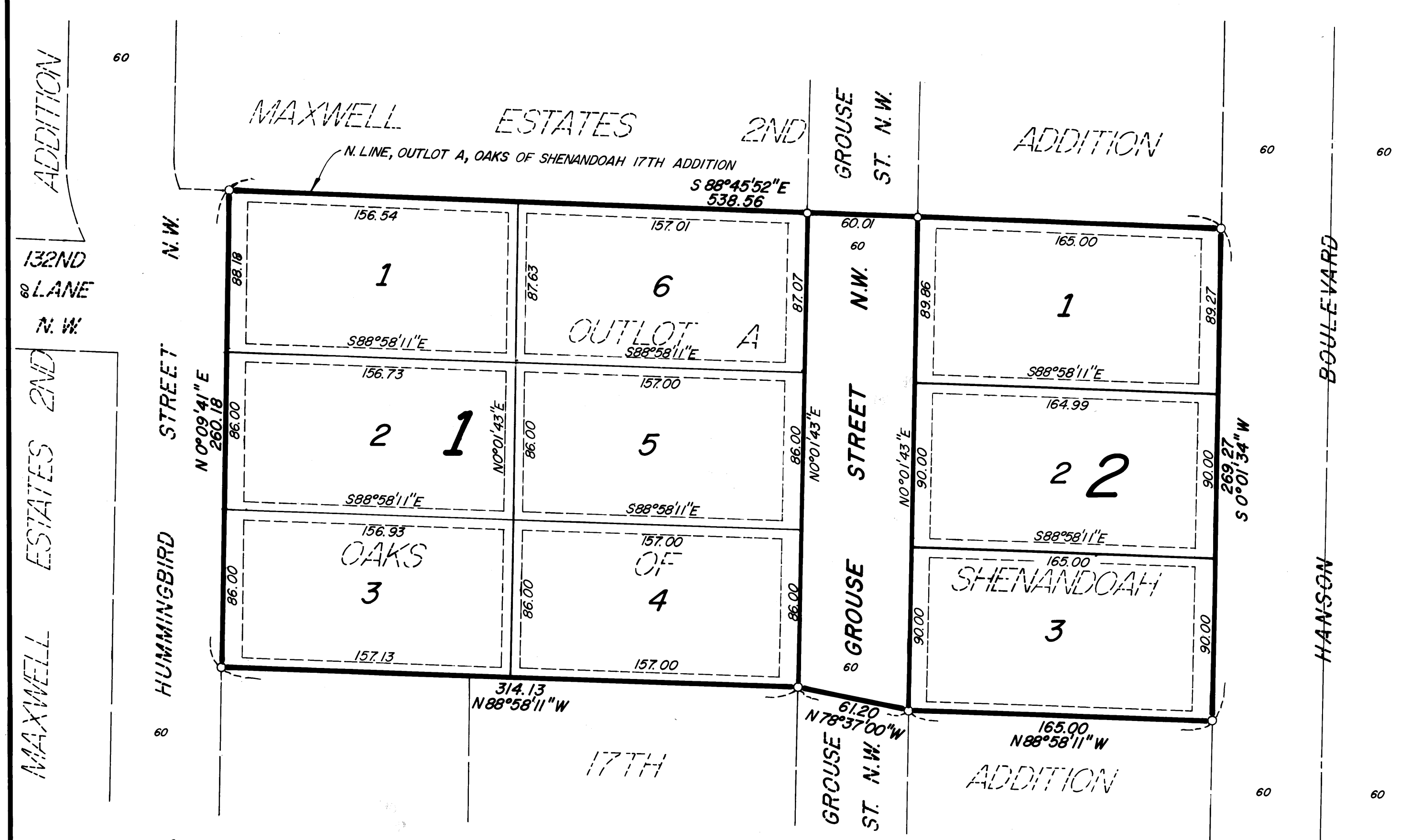
By: M. D. Anderson
Anoka County Surveyor

874776
OFFICE OF COUNTY RECORDER
STATE OF MINNESOTA, COUNTY OF ANOKA

I hereby certify that the within instrument was filed in this office for record on the DEC 8 A.D., 1989 at 2 o'clock P.M., and was duly recorded in book 116 of Plats, page 34.

NO DELINQUENT TAXES AND TRANSFER ENTLRED"
December 8, 1989
Charles A. Schewe Auditor, Anoka County
Donald E. Bailey Anoka County Treasurer
J. Henry Deputy
Red O'Donnell County Recorder
Debra Kay Ge Deputy

Caine & Associates
LAND SURVEYORS, INC.



NOTE: FOR THE PURPOSES OF THIS PLAT, THE NORTH LINE OF OUTLOT A, OAKS OF SHENANDOAH 17TH ADDITION IS ASSUMED TO BEAR S88°45'52"E.

DRAINAGE & UTILITY EASEMENTS SHOWN THUS:

