

NORTHTOWN BUSINESS CENTER

CITY OF COON RAPIDS

COUNTY OF ANOKA

LOT SURVEYS CO., INC.

Land Surveyors

KNOW ALL MEN BY THESE PRESENTS: That Gaughan Land Incorporated, a Minnesota corporation, owner and proprietor, of the following described property situated in the County of Anoka, State of Minnesota to-wit:

That part of Lots 2 and 4, Block 4, lying South and East of a line drawn from a point on the East line of said Lot 4 distant 290.94 feet South of the Northeast corner of said Lot 4 to a point on the Southwesterly line of said Lot 2 distant 129.91 feet Southeastly along said Southwesterly line from the most Westerly corner of said Lot 2. All in "Twin City Terrace".

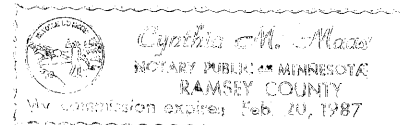
Also that part of the North 1/2 of the Northeast 1/4 of Section 36, Township 31, Range 24, Anoka County, Minnesota lying North of the South 602.00 feet as measured along the East line of said North 1/2, lying Northeastly of Coon Rapids Boulevard (also known as County State Aid Highway No. 3) and lying Westerly of United States Highway No. 10, as monumented.

Have caused the same to be surveyed and platted as NORTHTOWN BUSINESS CENTER and do hereby donate and dedicate to the public for public use forever the Street, and utility and drainage easements as shown on the plat. In witness whereof said Gaughan Land Incorporated, a Minnesota corporation, has caused these presents to be signed by its proper officer this 28th day of January 1985.

Signed: GAUGHAN LAND INCORPORATED

P.J. Gaughan
P.J. Gaughan, President

State of Minnesota
County of Anoka The foregoing instrument was acknowledged before me this 28th day of January 1985, by P. J. Gaughan, president of Gaughan Land Incorporated, a Minnesota corporation, on behalf of the corporation.



Cynthia M. Maas
Notary Public, Ramsey County, Minnesota
My Commission Expires Feb. 20, 1987

I hereby certify that I have surveyed and platted the property described on this plat as NORTHTOWN BUSINESS CENTER; that this plat is a correct representation of said survey; that the distances are correctly shown on said plat in feet and hundredths of a foot; that all monuments have been correctly placed in the ground as shown on said plat; that the outside boundary lines are correctly designated on said plat; and that there are no wetlands or public highways to be designated other than as shown thereon.

Raymond A. Prasch
Raymond A. Prasch, Registered Land Surveyor
Minnesota Registration No. 6743

State of Minnesota
County of Hennepin The foregoing instrument was acknowledged before me this 26th day of DECEMBER 1984, by Raymond A. Prasch, a Registered Land Surveyor.

Milton E. Hyland
Milton E. Hyland - Notary Public, Henn. Co., Minn.
My Commission Expires Nov. 10, 1987

The plat of NORTHTOWN BUSINESS CENTER was approved by the Planning and Zoning Commission of the City of Coon Rapids at a regular meeting thereof held this 15 day of November 1984.

By Donna M. Naewe Chairman

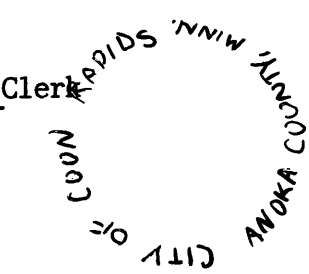
We hereby certify that the City Council of the City of Coon Rapids, Anoka County, Minnesota, duly accepted and approved the plat of NORTHTOWN BUSINESS CENTER, at a regular meeting thereof held this 21 day of December 1984.

By Robert B. Lums Mayor

By Betty Bell, CMC Clerk

Checked and approved this 5th day of February 1985.

Robert W. Anderson
Anoka County Surveyor



"NO DELINQUENT TAXES AND TRESPASSES ENTERED"

February 5, 1985

Charles R. Lefebvre
Auditor

By Jonell M. Sawyer
Deputy

I HEREBY CERTIFY THAT THE TAXES PAYABLE IN THE YEAR 1985 ON THE LANDS DESCRIBED WITHIN ARE PAID
Donald C. Bailey, M.D.
Anoka County Treasurer

06000

OFFICE OF COUNTY RECORDER
STATE OF MINNESOTA, COUNTY OF ANOKA

I hereby certify that the within instrument was filed in this office for record on the FEB 6 1985 A.D., 19

2:50 o'clock P.M., and was duly recorded in book 34 of PLAT page 45

Ed J. Amundson
County Recorder

W. E. Alderman
Auditor

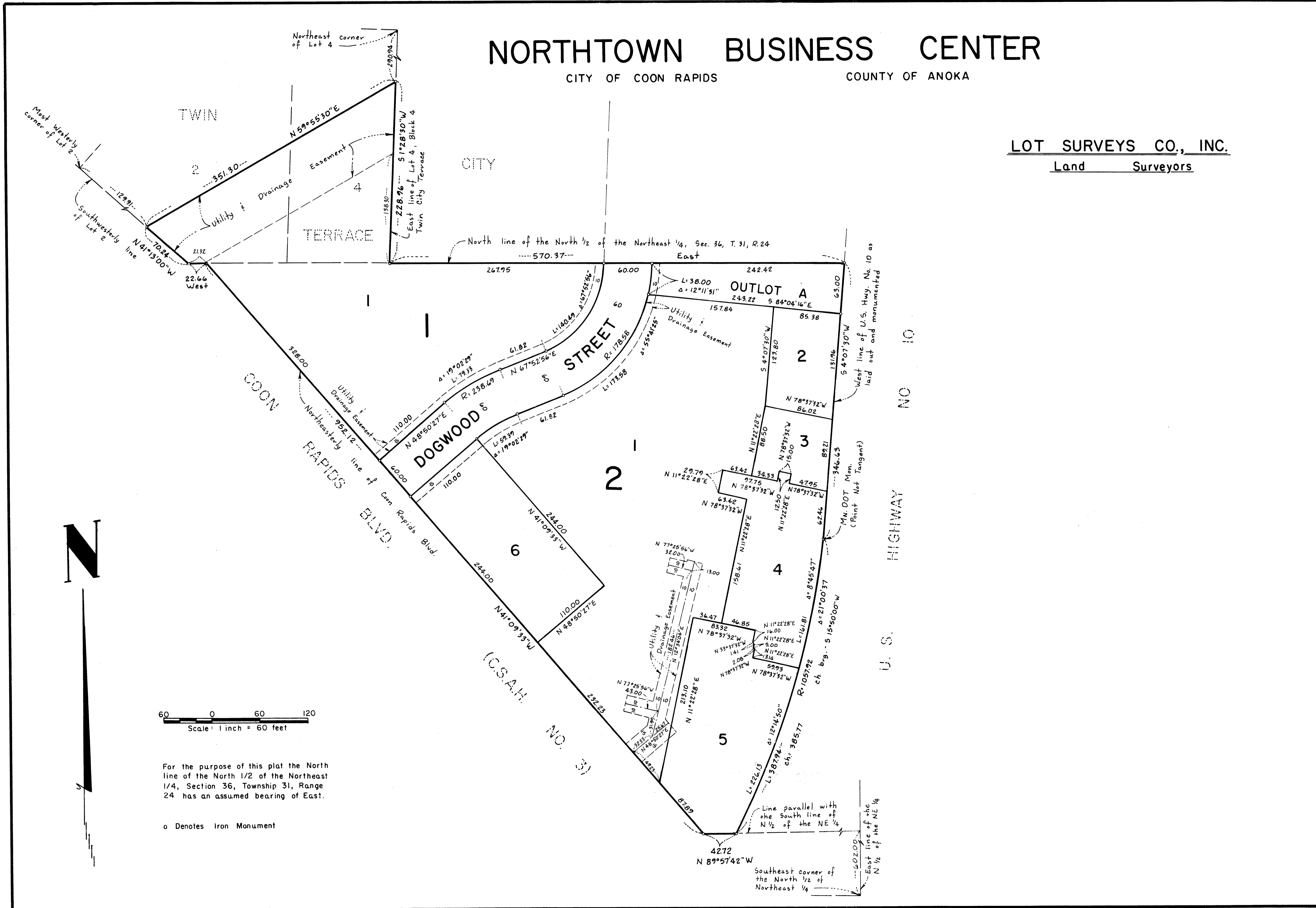
NORTHTOWN BUSINESS CENTER

CITY OF COON RAPIDS

COUNTY OF ANOKA

LOT SURVEYS CO., INC.

Land Surveyors



60 0 60 120
 Scale: 1 inch = 60 feet

For the purpose of this plat the North line of the North 1/2 of the Northeast 1/4, Section 36, Township 31, Range 24 has an assumed bearing of East.

o Denotes Iron Monument