

# NORTHWOODS ADDITION

GROW TOWNSHIP  
ANOKA COUNTY, MINNESOTA

CARTWRIGHT & OLSON  
LAND SURVEYORS

KNOW ALL MEN BY THESE PRESENTS: THAT WE, JOHN BASS AND MARGARET BASS, HIS WIFE, AND MARTIN WERTH, SINGLE, OWNERS AND PROPRIETORS OF THE FOLLOWING DESCRIBED PROPERTY SITUATE IN THE COUNTY OF ANOKA, STATE OF MINNESOTA, TOWIT: THAT PART OF THE NORTHEAST 1/4 OF SECTION 33, TOWNSHIP 32, RANGE 24, DESCRIBED AS FOLLOWS: COMMENCING AT THE SOUTHWEST CORNER OF SAID NORTHEAST 1/4; THENCE NORTH 88° 56' 30" EAST ALONG THE SOUTH LINE OF SAID NORTHEAST 1/4 A DISTANCE OF 675 FEET; THENCE NORTH 29° 33' EAST ALONG THE CENTERLINE OF CONSTANCE ROAD, SO-CALLED, A DISTANCE OF 730 FEET TO THE ACTUAL POINT OF BEGINNING OF THE TRACT OF LAND TO BE HEREBY DESCRIBED; THENCE CONTINUING NORTH 29° 33' EAST ALONG SAID CENTERLINE A DISTANCE OF 190 FEET; THENCE ON A TANGENTIAL CURVE TO THE RIGHT HAVING A RADIUS OF 2186.92 FEET FOR A DISTANCE OF 649.19 FEET; THENCE NORTH 46° 33' 30" EAST ALONG SAID CENTERLINE A DISTANCE OF 715.59 FEET; THENCE NORTH 0° 40' 30" EAST A DISTANCE OF 456.43 FEET; THENCE SOUTH 88° 47' WEST A DISTANCE OF 200.12 FEET; THENCE NORTH 0° 40' 30" EAST A DISTANCE OF 51.02 FEET; THENCE SOUTH 88° 47' WEST A DISTANCE OF 660.03 FEET; THENCE SOUTH 0° 40' 30" WEST A DISTANCE OF 390.00 FEET; THENCE SOUTH 72° 05' 50" WEST A DISTANCE OF 291.35 FEET; THENCE SOUTH 20° 00' WEST A DISTANCE OF 200.00 FEET; THENCE SOUTH 1° 13' EAST A DISTANCE OF 60.0 FEET; THENCE SOUTH 88° 47' WEST A DISTANCE OF 35 FEET; THENCE SOUTH 26° 08' 14" WEST A DISTANCE OF 235.97 FEET; THENCE NORTH 60° 27' WEST A DISTANCE OF 65.0 FEET; THENCE SOUTH 73° 08' 59" WEST A DISTANCE OF 145 FEET; THENCE SOUTH 21° 01' 04" WEST A DISTANCE OF 303.35 FEET; THENCE SOUTH 60° 27' EAST A DISTANCE OF 250.0 FEET; THENCE SOUTH 29° 33' WEST A DISTANCE OF 55 FEET; THENCE SOUTH 60° 27' EAST A DISTANCE OF 510.00 TO ACTUAL POINT OF BEGINNING. (FOR THE PURPOSE OF THIS DESCRIPTION THE WEST LINE OF THE NORTHEAST 1/4 OF SAID SECTION 33 IS ASSUMED A DUE NORTH AND SOUTH LINE.) HAVE CAUSED THE SAME TO BE SURVEYED AND PLATTED AS NORTHWOODS ADDITION AND DO HEREBY DONATE AND DEDICATE TO THE PUBLIC FOR PUBLIC USE FOREVER THE STREETS, ROADS, LANE AND DRIVE. ALSO SUBJECT TO UTILITY AND DRAINAGE EASEMENTS AS SHOWN ON THE ANNEXED PLAT. IN WITNESS WHEREOF WE HAVE HEREUNTO SET OUR HANDS AND SEALS ON THIS 23rd DAY OF October A.D. 1957.

IN PRESENCE OF:  
\_\_\_\_\_  
AND Robert J. Attelle  
\_\_\_\_\_  
AND Robert J. Attelle  
\_\_\_\_\_  
AND Robert J. Attelle

SIGNED:  
John Bass  
JOHN BASS  
Margaret Bass  
MARGARET BASS  
Martin Werth  
MARTIN WERTH

STATE OF MINNESOTA )  
COUNTY OF ANOKA ) S.S.

ON THIS 23rd DAY OF October A.D. 1957, BEFORE ME, A NOTARY PUBLIC WITHIN AND FOR SAID COUNTY AND STATE, PERSONALLY APPEARED JOHN BASS AND MARGARET BASS, HIS WIFE, AND MARTIN WERTH, SINGLE, TO ME PERSONALLY KNOWN TO BE THE PERSONS DESCRIBED IN AND WHO EXECUTED THE SAME AS THEIR OWN FREE ACT AND DEED.

Alvin G. Glick  
NOTARY PUBLIC, ANOKA COUNTY, MINNESOTA  
ALVIN G. GLICK  
My Commission Expires June 6, 1962

I HEREBY CERTIFY THAT I HAVE SURVEYED AND PLATTED THE LAND DESCRIBED IN THE DEDICATION ON THIS PLAT AS NORTHWOODS ADDITION; THAT THIS PLAT IS A CORRECT REPRESENTATION OF SAID SURVEY; THAT ALL DISTANCES ARE CORRECTLY SHOWN ON SAID PLAT IN FIGURES DENOTING FEET AND DECIMALS OF A FOOT; THAT THE MONUMENTS FOR THE GUIDANCE OF FUTURE SURVEYS HAVE BEEN CORRECTLY PLACED IN THE GROUND AS SHOWN ON THE PLAT; THAT THE TOPOGRAPHY OF THE LAND IS CORRECTLY SHOWN ON SAID PLAT; THAT THE OUTSIDE BOUNDARIES OF THE LAND ARE CORRECTLY DESIGNATED ON SAID PLAT; AND THAT THERE ARE NO WET LANDS OR PUBLIC HIGHWAYS TO BE DESIGNATED ON SAID PLAT OTHER THAN ARE SHOWN THEREON.

Henry C. Cartwright, Jr.  
REGISTERED LAND SURVEYOR MINNESOTA REG. NO. 1983

STATE OF MINNESOTA )  
COUNTY OF HENNEPIN ) S.S.

ABOVE CERTIFICATE SUBSCRIBED AND SWORN TO BEFORE ME A NOTARY PUBLIC, WITHIN AND FOR SAID COUNTY AND STATE ON THIS 7th DAY OF OCTOBER A.D. 1957.

Norman C. Holum  
NOTARY PUBLIC, HENNEPIN COUNTY, MINNESOTA  
NORMAN C. HOLUM  
My Commission Expires Oct. 14, 1961

ANNEXED PLAT OF NORTHWOODS ADDITION WAS APPROVED BY THE PLANNING AND ZONING COMMISSION AND BY THE TOWN BOARD OF THE TOWNSHIP OF GROW AT A REGULAR MEETING THEREOF HELD THIS 7th DAY OF OCTOBER A.D. 1957.

PLANNING AND ZONING COMMISSION  
Carl E. Erickson  
CHAIRMAN  
Gail O. Palm  
CLERK

TOWN BOARD OF THE TOWNSHIP OF GROW  
Edward K. Irvine  
CHAIRMAN  
Gail O. Palm  
CLERK

THIS PLAT WAS APPROVED AND ACCEPTED BY THE BOARD OF COUNTY COMMISSIONERS OF THE COUNTY OF ANOKA, STATE OF MINNESOTA AT A REGULAR MEETING HELD THIS 9th DAY OF October A.D. 1957.

134983  
OFFICE OF REGISTER OF DEEDS }  
STATE OF MINNESOTA, COUNTY OF ANOKA } ss  
I hereby certify that the within instrument was filed in the office of the Register of Deeds on the 23rd day of NOV 1957. In witness whereof, I have hereunto set my hand and seal at St. Paul, Minnesota, this 23rd day of NOV 1957.  
Estrella Skinner  
Register of Deeds  
By Margaret Rice  
Deputy

RECOMMENDED FOR APPROVAL THIS 9th DAY OF October A.D. 1957.  
C. J. Lundheim  
COUNTY HIGHWAY ENGINEER, ANOKA COUNTY, MINNESOTA

Albert A. Kardak  
CHAIRMAN  
Samuel M. Campbell  
COUNTY AUDITOR  
Walter B. Bowers  
County Treasurer

THIS PLAT WAS APPROVED AS TO FORM AND EXECUTION ON THIS 23rd DAY OF October A.D. 1957  
Robert J. Olson  
COUNTY ATTORNEY, ANOKA COUNTY, MINNESOTA

Samuel M. Campbell  
No. 57

# NORTHWOODS ADDITION

GROW TOWNSHIP  
ANOKA COUNTY, MINNESOTA

CARTWRIGHT & OLSON  
LAND SURVEYORS

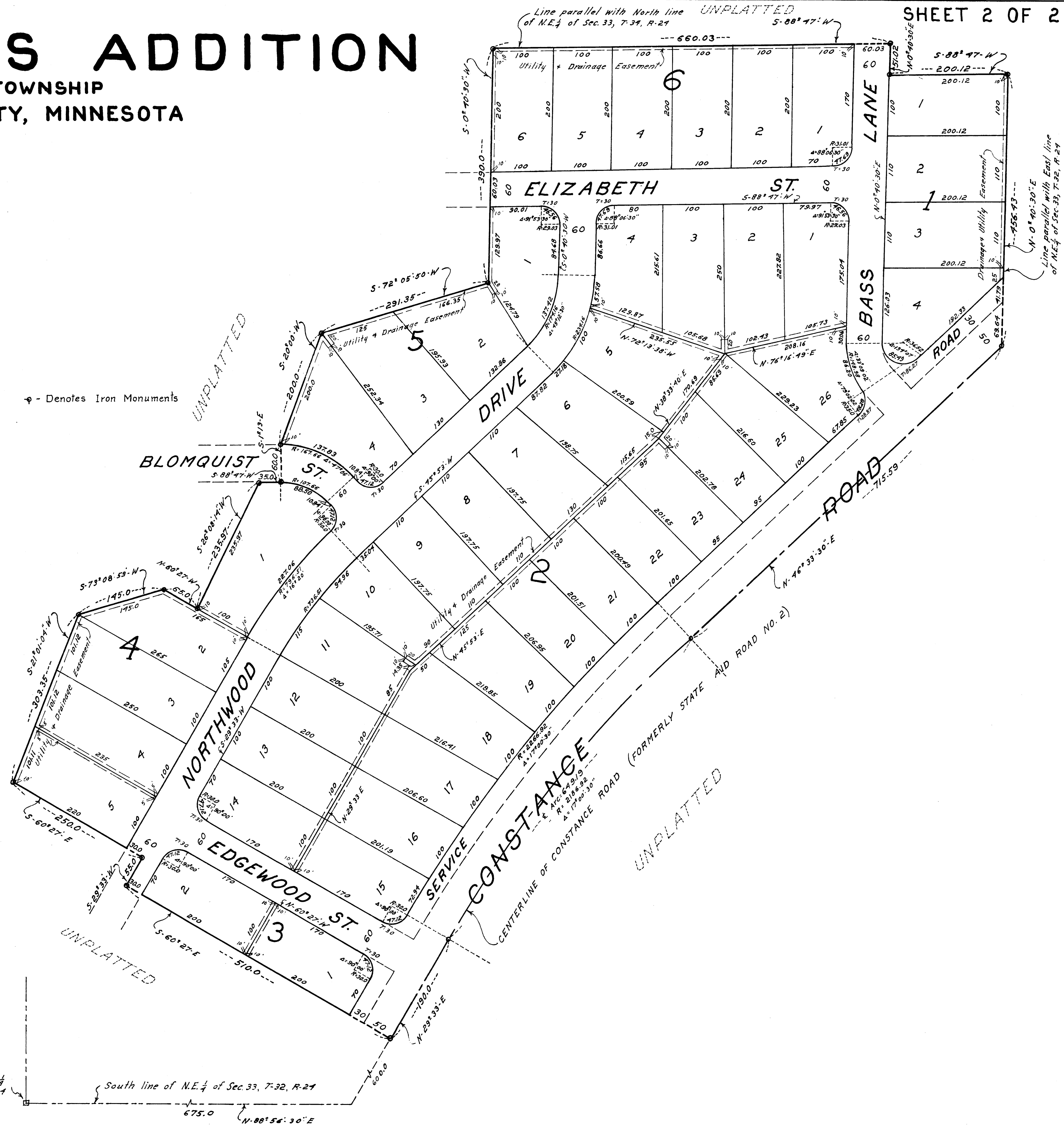


SCALE - 1" = 100'

SEPTEMBER 1957

φ - Denotes Iron Monuments

S.W. cor. of N.E. 1/4 of Sec. 33, T. 32, R. 24  
675.0  
N. 88° 56' 30" E



Line parallel with East line of N.E. 1/4 of Sec. 33, T. 32, R. 24

Line parallel with North line of N.E. 1/4 of Sec. 33, T. 32, R. 24

UNPLATTED

UNPLATTED

UNPLATTED

UNPLATTED

UNPLATTED