

OAK MEADOWS

KNOW ALL PERSONS BY THESE PRESENTS: That Oak Meadows Land Holding, LLC, a Minnesota limited liability company, owner of the following described property:

Outlots B, C and D, GILLUND OAKS.

Has caused the same to be surveyed and platted as OAK MEADOWS and does hereby dedicate to the public for public use the drainage and utility easements as created by this plat.

In witness whereof said Oak Meadows Land Holding, LLC, a Minnesota limited liability company, has caused these presents to be signed by its proper officer this 11 day of February, 2015.

Signed: Oak Meadows Land Holding, LLC

Barry Onufrock
Barry Onufrock, Chief Manager

STATE OF MINNESOTA

COUNTY OF ANOKA

This instrument was acknowledged before me on 2/4/15 by Barry Onufrock, Chief Manager of Oak Meadows Land Holding, LLC, a Minnesota limited liability company.

Rebecca LaZotte
Rebecca LaZotte

Notary Public, ANOKA, MN

My Commission expires: 1-31-16

I Lynn P. Caswell do hereby certify that this plat was prepared by me or under my direct supervision; that I am a duly Licensed Land Surveyor in the State of Minnesota; that this plat is a correct representation of the boundary survey; that all mathematical data and labels are correctly designated on this plat; that all monuments depicted on this plat have been, or will be correctly set within one year; that all water boundaries and wet lands, as defined in Minnesota Statutes, Section 505.01, Subd. 3, as of the date of this certificate are shown and labeled on this plat; and all public ways are shown and labeled on this plat.

Dated this 10th day of February, 2015.

Lynn P. Caswell
Lynn P. Caswell, Licensed Land Surveyor
Minnesota License No. 13057

STATE OF MINNESOTA

COUNTY OF Sherburne

This instrument was acknowledged before me on February 10, 2015 by Lynn P. Caswell.

Elizabeth J. Haglund
Elizabeth J. Haglund

Notary Public, Minnesota

My Commission expires: January 31, 2020

City Council, City of Blaine, Minnesota

This plat of OAK MEADOWS was approved and accepted by the City Council of the City of Blaine, Minnesota at a regular meeting thereof held this 6th day of November, 2014, and said plat is in compliance with the provisions of Minnesota Statutes, Section 505.03, Subd. 2.

City Council, City of Blaine, Minnesota

By: Tom Ryan, Mayor By: Colleen Penney, Clerk

County Surveyor

I hereby certify that in accordance with Minnesota Statutes, Section 505.021, Subd. 11, this plat has been reviewed and approved this 17th day of MARCH, 2015.

Larry D. Hojtm
Larry D. Hojtm
Anoka County Surveyor

County Auditor/Treasurer

Pursuant to Minnesota Statutes, Section 505.021, Subd. 9, taxes payable in the year 2015 on the land hereinbefore described have been paid. Also, pursuant to Minnesota Statutes, Section 272.12, there are no delinquent taxes and transfer entered this 17th day of March, 2015.

Jonell M. Sawyer
Property Tax Administrator

By PSM, Deputy

County Recorder/Registrar of Titles

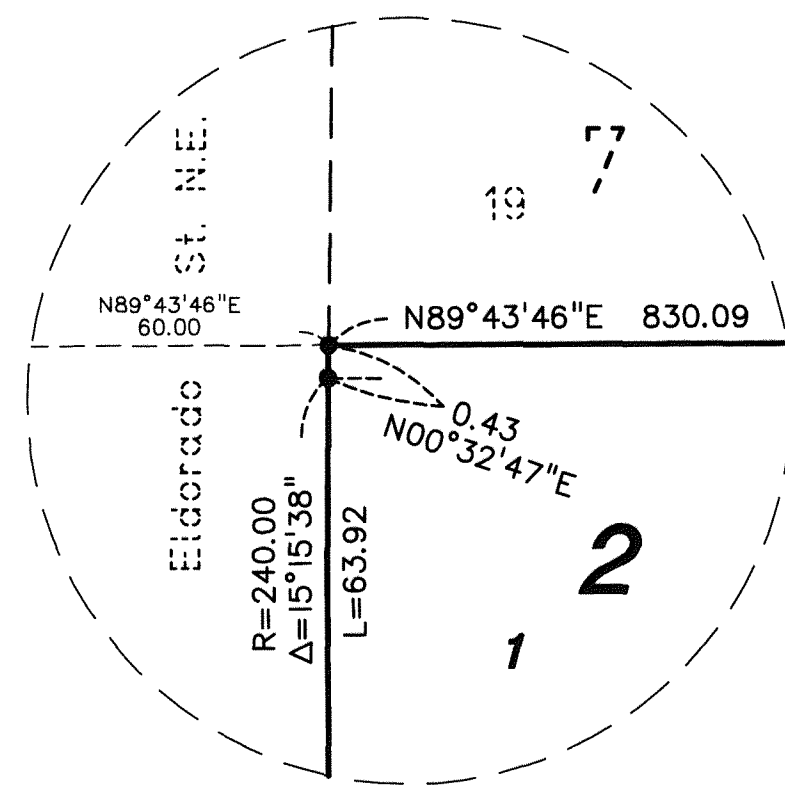
County of Anoka, State of Minnesota

I hereby certify that this plat of OAK MEADOWS was filed in the office of the County Recorder/Registrar of Titles for public record on this 17th day of March, 2015, at 2:30 o'clock PM and was duly recorded in Book 78 Page 5, as Document Number 2103818.002 Abstract

Jonell M. Sawyer
County Recorder/Registrar of Titles

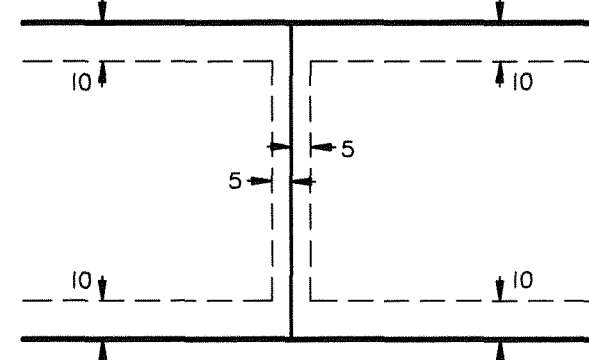
By PSM, Deputy

OAK MEADOWS

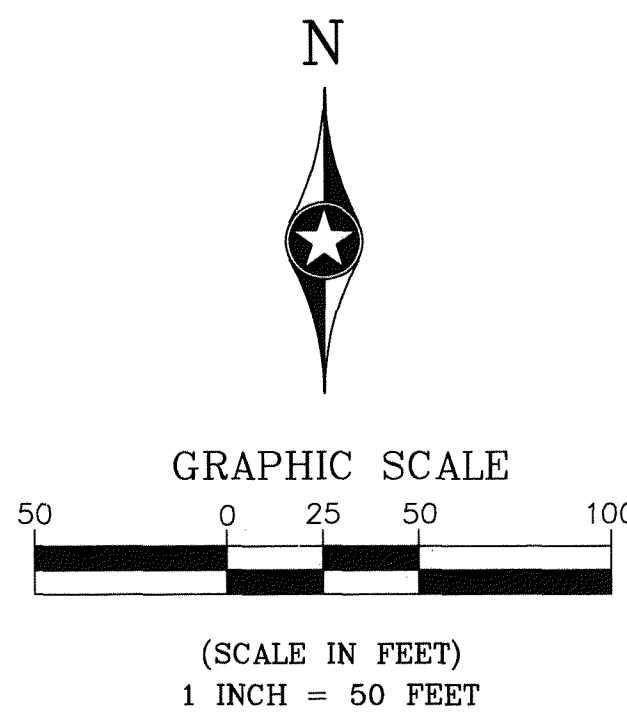


DETAIL A
NO SCALE

Drainage and Utility Easements are shown thus:

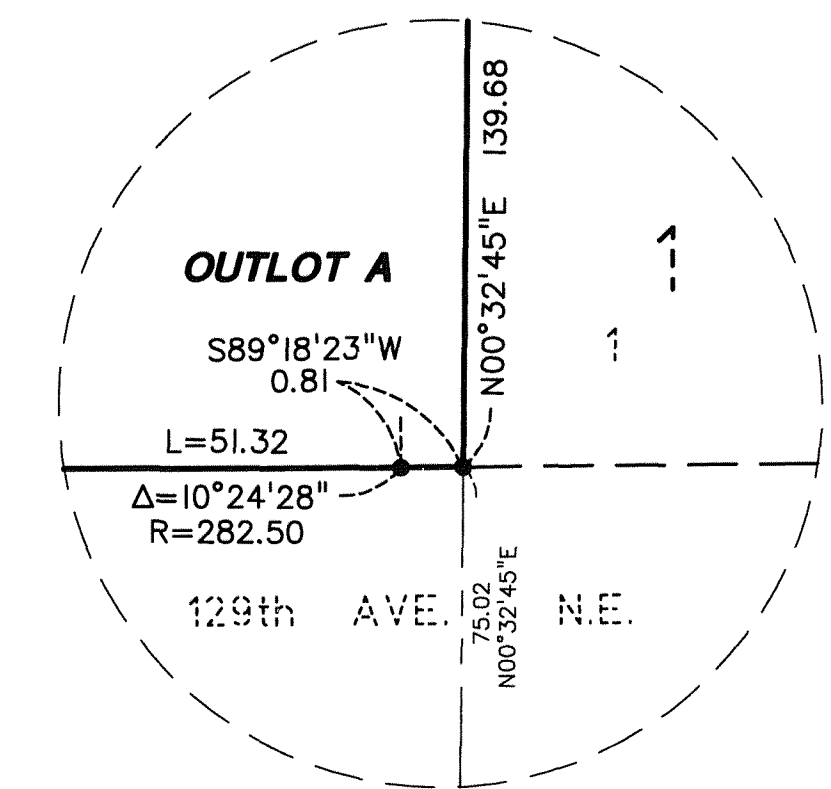


Being 10 feet in width and adjoining right-of-way lines and rear lot lines, also being 5 feet in width and adjoining side lot lines, unless otherwise indicated, as shown on plat.

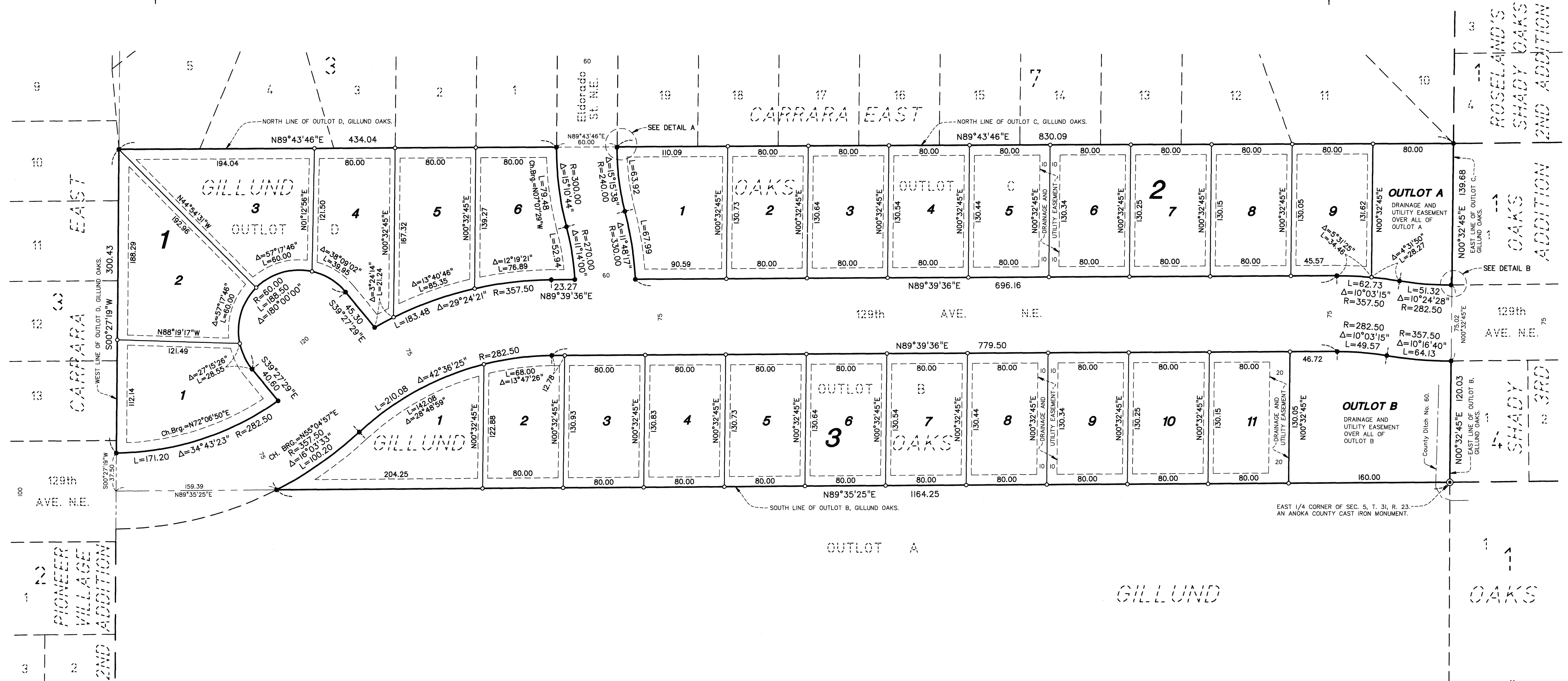


For the purposes of this plat, the South line of OUTLOT B, GILLUND OAKS, is assumed to bear North 89°35'25" East.

- Denotes a 1/2 inch x 1/4 inch iron monument with a plastic plug stamped R.L.S. 13057.
- Denotes iron monument found.
- ⊙ Denotes an Anoka County Cast Iron Monument found.



DETAIL B
NO SCALE



EAST 1/4 CORNER OF SEC. 5, T. 31, R. 23. AN ANOKA COUNTY CAST IRON MONUMENT.