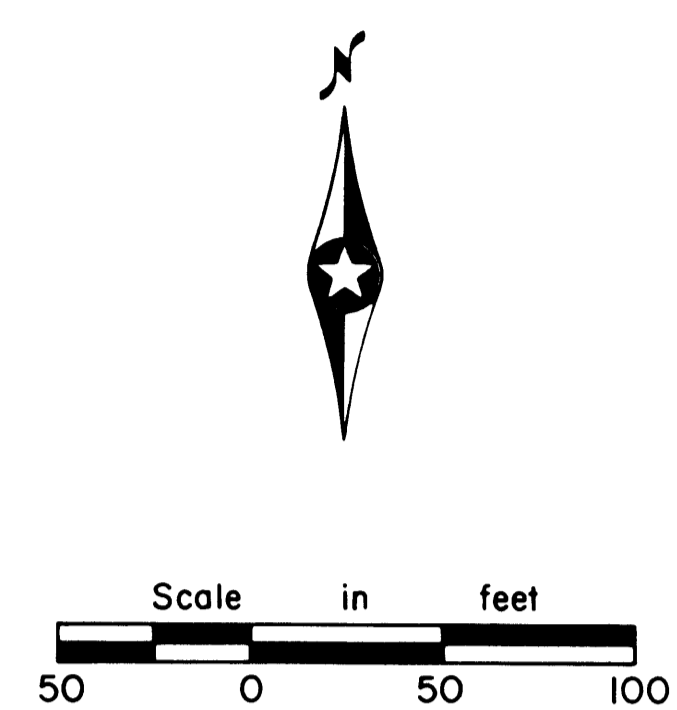
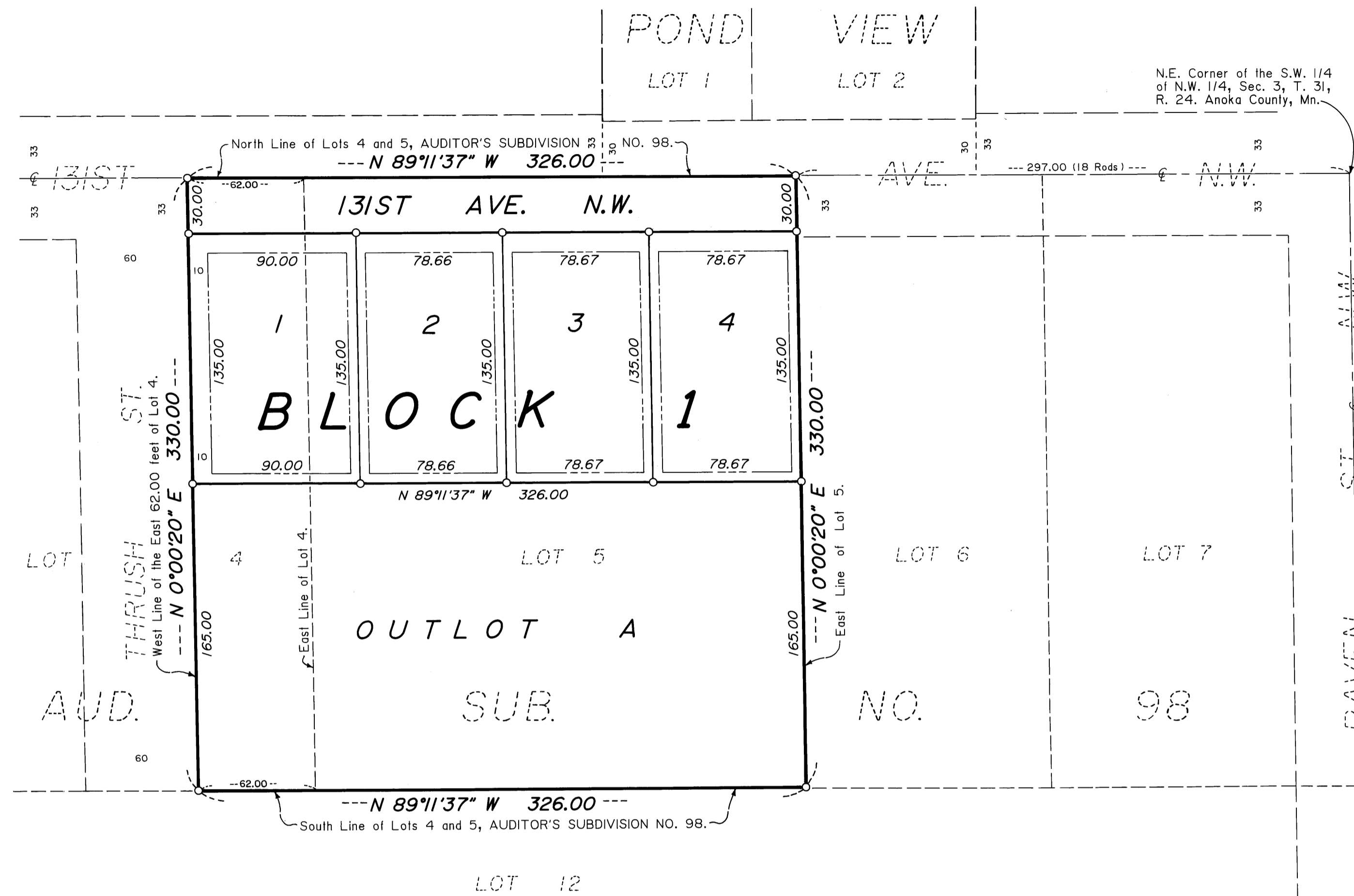


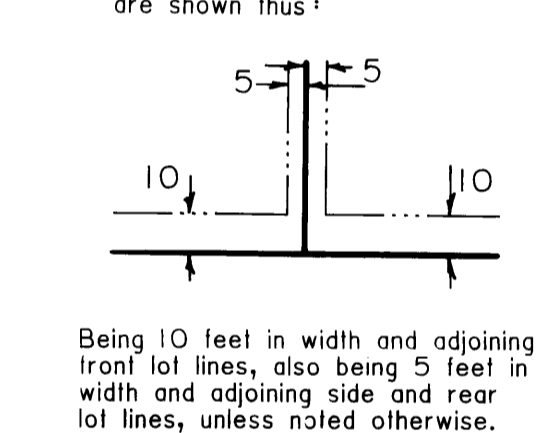
OAKS OF SHENANDOAH 22ND ADDITION

CITY OF COON RAPIDS,
ANOKA COUNTY, MN.



Scale: 1 inch = 50 feet.
 For the purposes of this plat, the North Line of Lots 4 and 5, Auditor's Subdivision No. 98, is assumed to bear N 89°11'37" W.

○ Denotes iron pipe set with a plastic plug stamped RLS 13057.
 Drainage and Utility Easements are shown thus:



I HEREBY CERTIFY THAT THE CURRENT AND DELINQUENT TAXES ON THE LANDS DESCRIBED WITHIN ARE PAID AND THE TRANSFER IS
 ENTERED Edward M. Tropea 9/1
 SHARON L. SHERWOOD
 NOTARY PUBLIC - MINNESOTA
 My Commission Expires: June 25, 1991
 BY Sharon L. Sherwood
 DEPUTY PROPERTY TAX ADMINISTRATOR

947855
 OFFICE OF COUNTY RECORDER
 STATE OF MINNESOTA, COUNTY OF ANOKA
 I hereby certify that the within instrument was filed in this office for record on the SEP 6 A.D., 1991 at 11:10 o'clock A.M., and was duly recorded in book 43 of Plat page 37
Richard J. Anderson
 County Recorder
 By Debra Kay
 Deputy

KNOW ALL MEN BY THESE PRESENTS: That Shamrock Development, Inc., a Minnesota corporation, fee owner of the following described properties situated in the State of Minnesota, County of Anoka, to-wit:

Lot 5 and the East 62.00 feet of Lot 4, AUDITOR'S SUBDIVISION NO. 98, Anoka County, Minnesota.

Have caused the same to be surveyed and platted as OAKS OF SHENANDOAH 22ND ADDITION, and do hereby donate and dedicate to the public for the public use forever the thoroughfare as shown on this plat. Also dedicating to the public, the easements as shown on this plat for drainage and utility purposes only. In witness whereof said Shamrock Development, Inc. has caused these presents to be signed by its proper officer this 5th day of September, 1991.

SHAMROCK DEVELOPMENT, INC.

By: James M. Stanton, James M. Stanton, President

State of Minnesota, County of Anoka
 The foregoing instrument was acknowledged before me this 5th day of September, 1991 by James M. Stanton, President of Shamrock Development, Inc., a Minnesota corporation, on behalf of the corporation.

ANGELA J. ZAJAC
 NOTARY PUBLIC - MINNESOTA
 ANOKA
 My Commission Expires April 22, 1993

By: Angela J. Zajac, Notary Public, Anoka County, Minnesota
 My commission expires: April 22, 1991

I hereby certify that I have surveyed and platted the property described in this plat as OAKS OF SHENANDOAH 22ND ADDITION and that this plat is a correct representation of said survey; that all monuments have been correctly placed in the ground as shown on the plat; that all distances are correctly shown on the plat in feet and hundredths of a foot; that the outside boundary lines are correctly designated on the plat; and that there are no wet lands or public highways to be designated on the plat other than as shown thereon.

Lynn P. Caswell
 Lynn P. Caswell, Land Surveyor
 Minnesota Registration No. 13057

State of Minnesota, County of Shuburne

The foregoing instrument was acknowledged before me this 26th day of March, 1991, by Lynn P. Caswell, Land Surveyor.

SHARON L. SHERWOOD
 NOTARY PUBLIC - MINNESOTA
 SHUBURNE COUNTY
 My Commission Expires: June 25, 1991

By: Sharon L. Sherwood, Notary Public, Shuburne County, Minnesota
 My commission expires: June 25, 1991

Annexed plat of OAKS OF SHENANDOAH 22ND ADDITION was approved by the Planning Commission of the City of Coon Rapids, Minnesota this 21st day of FEBRUARY, 1991.

By: Donna M. Naue, Chairman

Annexed plat of OAKS OF SHENANDOAH 22ND ADDITION was approved by the City Council of Coon Rapids, Minnesota at a regular meeting thereof held this 26th day of MARCH, 1991. If applicable, the written comments and recommendations of the Commissioner of Transportation and the County Highway Engineer have been received by the City or the prescribed 30 day period has elapsed without receipt of such comments and recommendations, as provided by Minnesota Statutes Section 505.03, Subdivision 2.

By: Richard L. Reiter, Mayor Attest: Betty Backes
 Clerk

This plat has been checked and approved this 6th day of Sept., 1991.
W. D. DeL..., Anoka County Surveyor



922 Main Street
 Elk River, Minnesota 55330
 (612) 441-2072
 Land Surveying
 Subdivision Design
 Site Planning