

OAKWOOD PONDS 4TH ADDITION

CITY OF BLAINE
COUNTY OF ANOKA
SEC. 1, TWP. 31, RGE. 23

KNOW ALL PERSONS BY THESE PRESENTS: That TEGL/AREP Oakwood, LP, a Minnesota limited partnership, owner of the following described property:

Outlot C and Outlot D, OAKWOOD PONDS 2ND ADDITION, according to the recorded plat thereof Anoka County, Minnesota Has caused the same to be surveyed and platted as OAKWOOD PONDS 4TH ADDITION and does hereby dedicate to the public for public use the public ways and the drainage and utility easements as shown on this plat.

In witness whereof said TEGL/AREP Oakwood, LP, a Minnesota limited partnership, has caused these presents to be signed by its proper officer this 20 day of August, 2020.

TEGL/AREP Oakwood, LP
By: TEGL/AREP Land GP, LLC, General Partner
Benjamin N. Schmidt
Benjamin N. Schmidt, Executive Vice President

STATE OF Minnesota
COUNTY OF Anoka

This instrument was acknowledged before me on August 20, 2020 by Benjamin N. Schmidt, Executive Vice President of TEGL/AREP Land GP, LLC, a Delaware limited liability company, General Partner of TEGL/AREP Oakwood, LP, a Minnesota limited partnership, on behalf of the partnership.

Cynthia J. Morical (Signed)
Cynthia J. Morical (Printed)
Notary Public, Hennepin County, Minnesota
My commission expires January 31, 2025

I, Thomas R. Balluff do hereby certify that this plat was prepared by me or under my direct supervision; that I am a duly Licensed Land Surveyor in the State of Minnesota; that this plat is a correct representation of the boundary survey, that all mathematical data and labels are correctly designated on this plat; that all monuments depicted on this plat have been, or will be correctly set within one year; that all water boundaries and wet lands, as defined in Minnesota Statutes, Section 505.01, Subd. 3, as of the date of this certificate are shown and labeled on this plat; and all public ways are shown and labeled on this plat.

Dated this 20th day of August, 2020.

Thomas R. Balluff
Thomas R. Balluff, Licensed Land Surveyor
Minnesota License No. 40361

STATE OF Minnesota
COUNTY OF Anoka

This instrument was acknowledged before me on August 20th, 2020 by Thomas R. Balluff.

Cynthia J. Morical (Signed)
Cynthia J. Morical (Printed)
Notary Public, Hennepin County, Minnesota
My commission expires January 31, 2025

CITY COUNCIL, CITY OF BLAINE, MINNESOTA

This plat of OAKWOOD PONDS 4TH ADDITION was approved and accepted by the City Council of the City of Blaine, Minnesota at a regular meeting thereof held this 22nd day of January, 2020, and said plat is in compliance with the provisions of Minnesota Statutes, Section 505.03, Subd. 2.

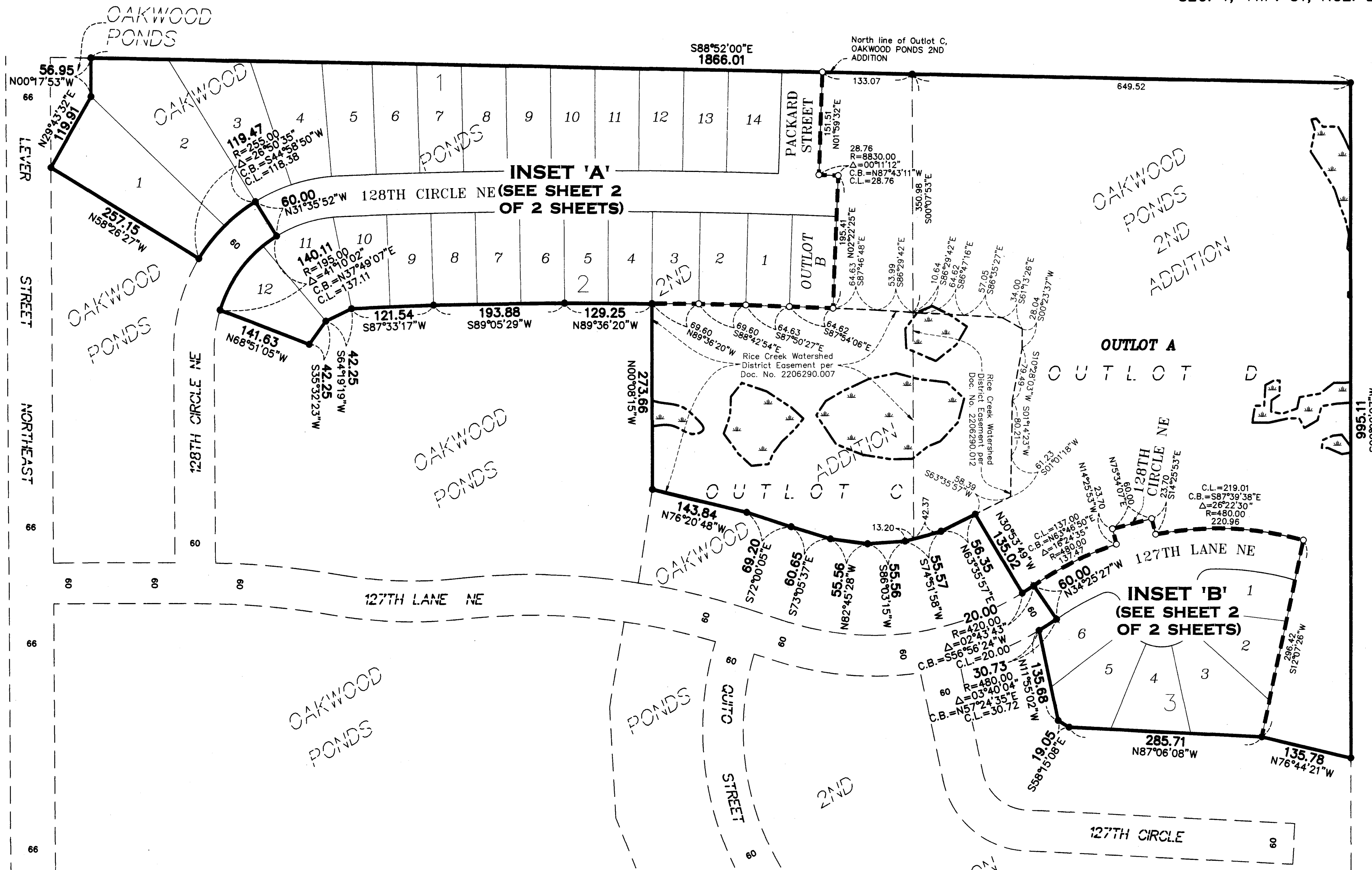
CITY COUNCIL, CITY OF BLAINE, MINNESOTA

By: *Charles F. Gitzen* Mayor
By: *William Spieren* Clerk

COUNTY SURVEYOR

I hereby certify that in accordance with Minnesota Statutes, Section 505.021, Subd. 11, this plat has been reviewed and approved this 12th day of October, 2020.

By: *Charles F. Gitzen*
Charles F. Gitzen
Anoka County Surveyor



COUNTY AUDITOR/TREASURER
Pursuant to Minnesota Statutes, Section 505.021, Subd. 9, taxes payable in the year 2020 on the land hereinbefore described have been paid. Also, pursuant to Minnesota Statutes, Section 272.12, there are no delinquent taxes and transfer entered this 12 day of October, 2020.

Pamela J LeBlanc
Property Tax Administrator
By: *Serena Hargison* Deputy

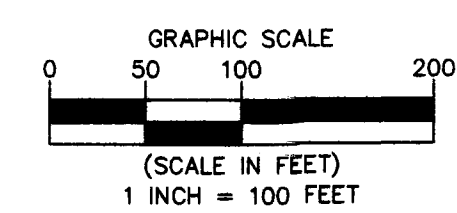
COUNTY RECORDER/REGISTRAR OF TITLES

County of Anoka, State of Minnesota

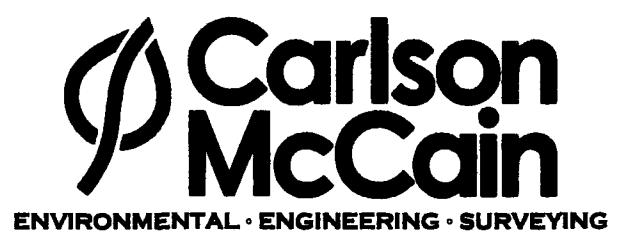
I hereby certify that this plat of OAKWOOD PONDS 4TH ADDITION was filed in the office of the County Recorder/Registrar of Titles for public record on this 12 day of October, 2020 at 11:13 o'clock A.M. and was duly recorded as Document Number 2282715.003

Pamela J LeBlanc
County Recorder/Registrar of Titles
By: *Serena Hargison* Deputy

- Denotes 5/8 inch by 14 inch Rebar, set or to be set within one year of recording of this plat and marked with license number 40361
- Denotes found 5/8 inch by 14 inch Rebar marked with license number 40361
- Denotes existing wetlands, delineated by Kjelhaug Environmental Services Company in 2017



For the purposes of this plat, the North line of Outlot C, OAKWOOD PONDS 2ND ADDITION, is assumed to have a bearing of South 88 degrees 52 minutes 00 seconds East.



\$56.00

