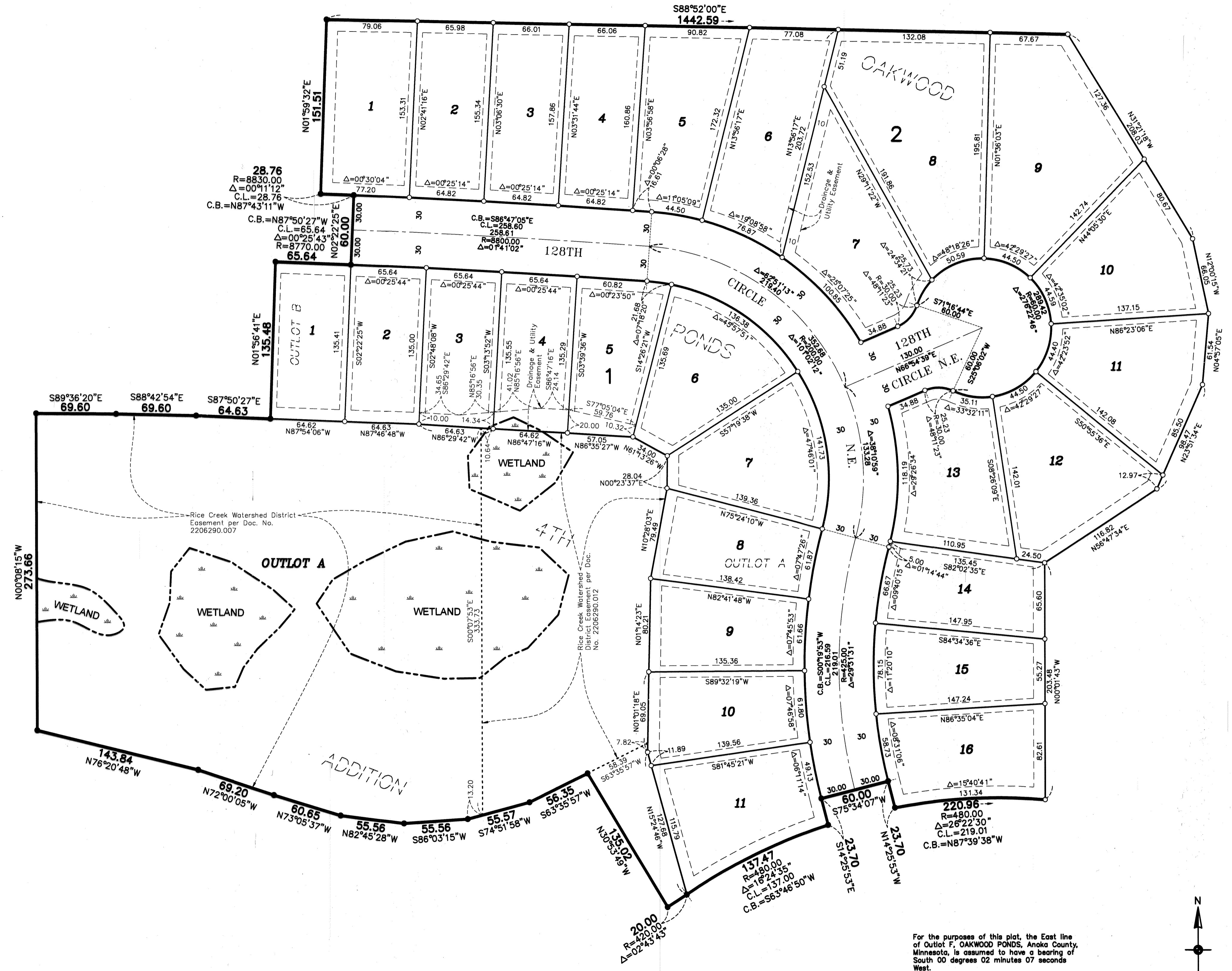


OAKWOOD PONDS 5TH ADDITION

INSET A

OFFICIAL PLAN



For the purposes of this plat, the East line of Outlot F, OAKWOOD PONDS, Anoka County, Minnesota, is assumed to have a bearing of South 00 degrees 02 minutes 07 seconds West.

- Denotes 5/8 inch by 14 inch Rebar, set or to be set within one year of recording of this plat and marked with license number 40361
- Denotes found 5/8 inch by 14 inch Rebar marked with license number 40361
- Denotes existing wetlands, delineated by Kjolhaug Environmental Services Company in 2017

