

# OLD MILL ESTATES SECOND ADDITION

City of Centerville  
County of Anoka  
Sec. 14, T31, R22

KNOW ALL PERSONS BY THESE PRESENTS: That Elmcrest Vistas LLC, a Minnesota limited liability company, owner of the following described property:

Outlot A, OLD MILL ESTATES, Anoka County, Minnesota.

Has caused the same to be surveyed and platted as OLD MILL ESTATES SECOND ADDITION and does hereby dedicate to the public for public use the public ways and the drainage and utility easements as shown on this plat.

In witness whereof said Elmcrest Vistas LLC, a Minnesota limited liability company, has caused these presents to be signed by its proper officer this 25<sup>th</sup> day of August, 2020.

ELMCREST VISTAS LLC

*James D. MacKinnon*  
James D. MacKinnon, Chief Manager

STATE OF MINNESOTA  
COUNTY OF ANOKA

This instrument was acknowledged before me this 25<sup>th</sup> day of August, 2020 by James D. MacKinnon, Chief Manager of Elmcrest Vistas LLC, a Minnesota limited liability company.

*Teresa Bender* (Signature)  
Teresa Bender (Print Name)  
Notary Public, ANOKA County, Minnesota  
My Commission Expires 1/31/2025

I James E. Napier do hereby certify that this plat was prepared by me or under my direct supervision; that I am a duly Licensed Land Surveyor in the State of Minnesota; that this plat is a correct representation of the boundary survey; that all mathematical data and labels are correctly designated on this plat; that all monuments depicted on this plat have been, or will be correctly set within one year; that all water boundaries and wet lands, as defined in Minnesota Statutes, Section 505.01, Subd. 3, as of the date of this certificate are shown and labeled on this plat; and all public ways are shown and labeled on this plat.

Dated this 27<sup>th</sup> day of August, 2020.

*James E. Napier*  
James E. Napier, Licensed Land Surveyor  
Minnesota License No. 25343

STATE OF MINNESOTA  
COUNTY OF ANOKA

This instrument was acknowledged before me this 27<sup>th</sup> day of August, 2020 by James E. Napier.

*Teresa Bender* (Signature)  
Teresa Bender (Print Name)  
Notary Public, ANOKA County, Minnesota  
My Commission Expires 1/31/2025

CITY COUNCIL, CITY OF CENTERVILLE, MINNESOTA

This plat of OLD MILL ESTATES SECOND ADDITION was approved and accepted by the City Council of the City of Centerville, Minnesota at a regular meeting thereof held this 22<sup>nd</sup> day of August, 2020, and said plat is in compliance with the provisions of Minnesota Statutes, Section 505.03, Subd. 2.

City Council, City of Centerville, Minnesota

By *D. Jore* Mayor By *Anna Bol* Clerk

COUNTY SURVEYOR

I hereby certify that in accordance with Minnesota Statutes, Section 505.021, Subd. 11, this plat has been reviewed and approved this 31<sup>st</sup> day of August, 2020.

*Charles F. Gitzen*  
Charles F. Gitzen  
Anoka County Surveyor

COUNTY AUDITOR/TREASURER

Pursuant to Minnesota Statutes, Section 505.021, Subd. 9, taxes payable in the year 2020 on the land hereinbefore described have been paid. Also, pursuant to Minnesota Statutes, Section 272.12, there are no delinquent taxes and transfer entered this 31<sup>st</sup> day of August, 2020.

*Pamela J. LeBlanc*  
Pamela J. LeBlanc  
Property Tax Administrator

By *David Jore*, Deputy

COUNTY RECORDER/REGISTRAR OF TITLES  
COUNTY OF ANOKA, STATE OF MINNESOTA

I hereby certify that this plat of OLD MILL ESTATES SECOND ADDITION was filed in the office of the County Recorder/Registrar of Titles for public record on this 31<sup>st</sup> day of August, 2020 at 11 o'clock AM, and was duly recorded as Document Number 2276176.003.

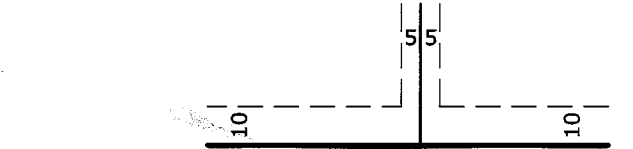
*Pamela J. LeBlanc*  
Pamela J. LeBlanc  
County Recorder/Registrar of Titles

By *David Jore*, Deputy

## LEGEND

- DENOTES 1/2 INCH IRON MONUMENT FOUND, MARKED RLS NO. 25343, UNLESS OTHERWISE SHOWN.
- DENOTES 1/2 INCH BY 14 INCH IRON PIPE SET, MARKED RLS NO. 25343
- DENOTES WETLAND EDGE AS DELINEATED BY JACOBSON ENVIRONMENTAL, PLLC IN APRIL 2018.

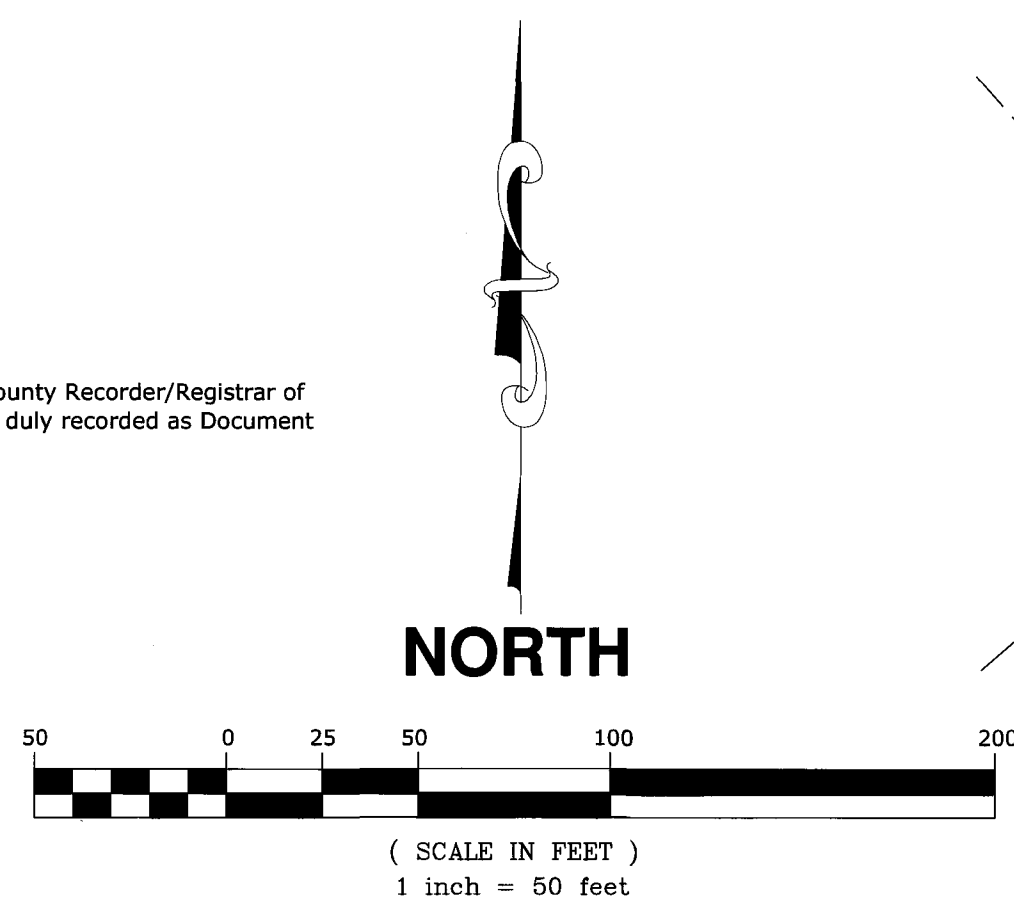
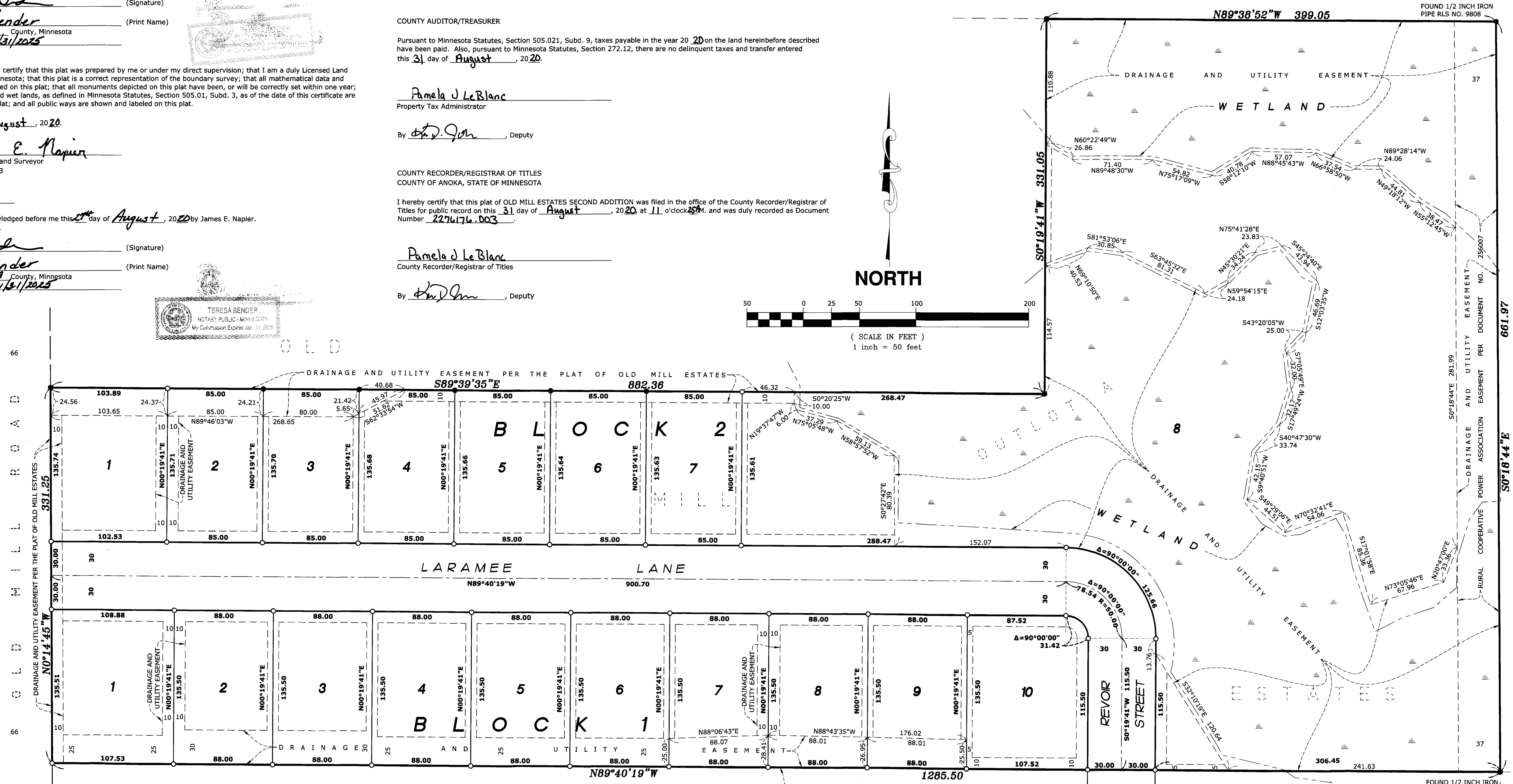
DRAINAGE AND UTILITY EASEMENTS ARE SHOWN THUS:



BEING 5 FEET IN WIDTH, AND ADJOINING SIDE LOT LINES, AND 10 FEET IN WIDTH AND ADJOINING RIGHT OF WAY LINES, AND REAR LOT LINES, UNLESS OTHERWISE SHOWN ON THIS PLAT.

FOR THE PURPOSES OF THIS PLAT, THE SOUTH LINE OF OUTLOT A, OLD MILL ESTATES IS ASSUMED TO HAVE A BEARING OF NORTH 89 DEGREES 40 MINUTES 19 SECONDS WEST.

AUDITORS SUBDIVISION NUMBER 47 REVISED



**E. G. RUD & SONS, INC.**  
EST. 1877 Professional Land Surveyors

A C O R N C R E E K S E C O N D

R E V O R S T R E E T A D D I T I O N

THE WOODS OF CLEARWATER CREEK