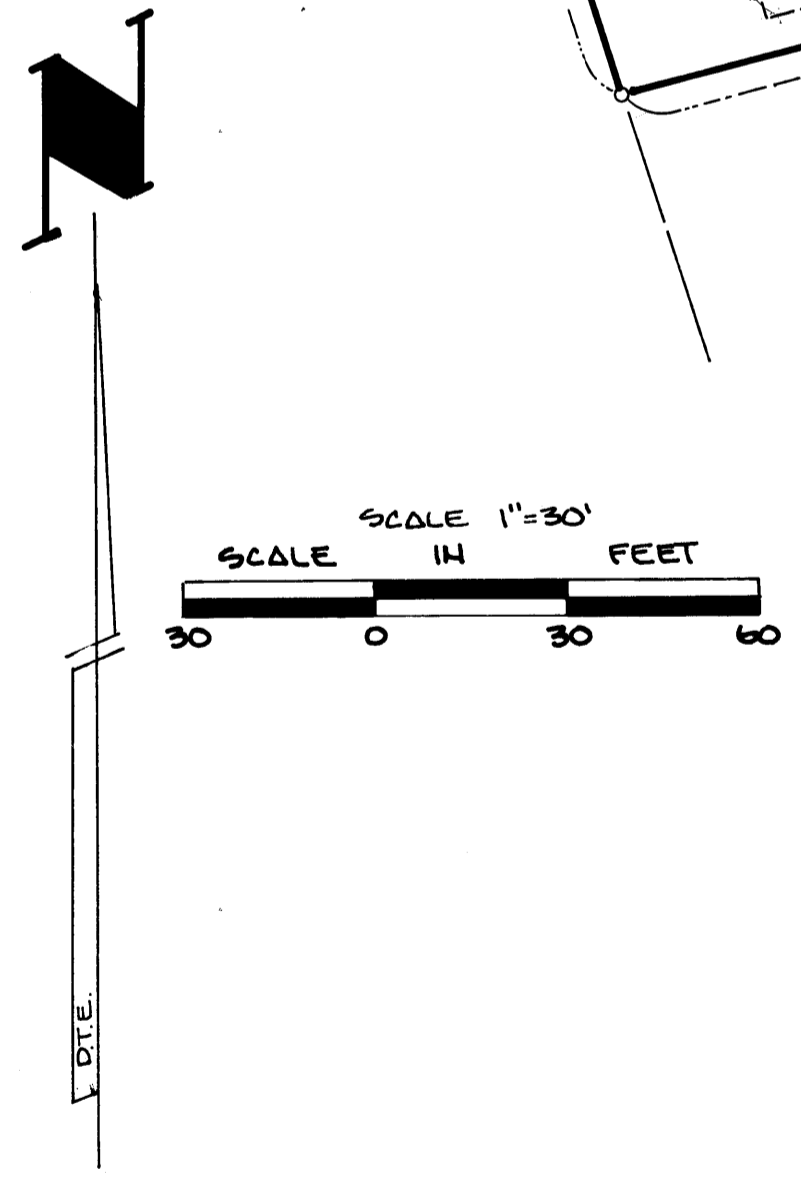
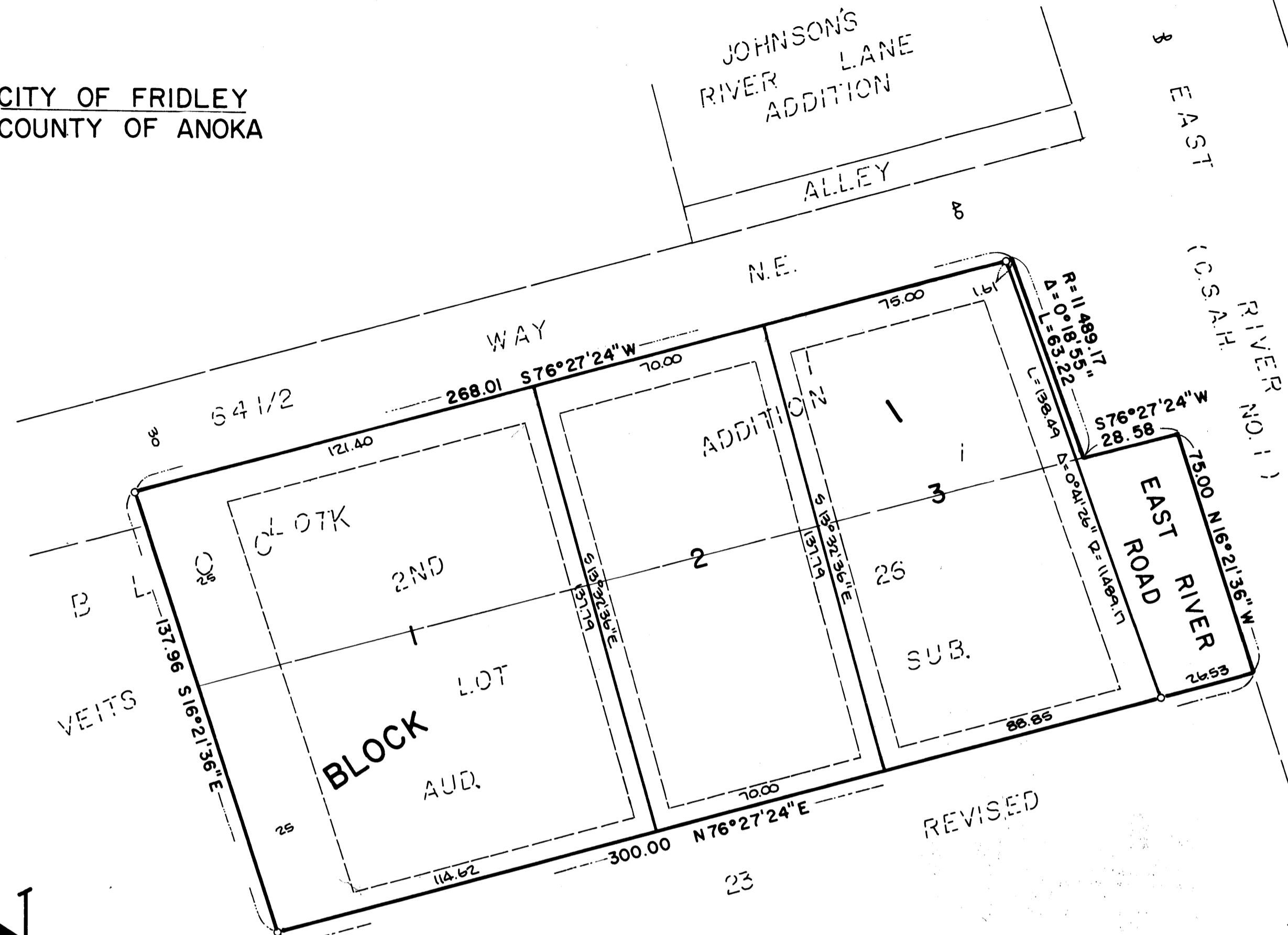


LOT SURVEYS COMPANY, INC.
LAND SURVEYORS

CITY OF FRIDLEY
COUNTY OF ANOKA



Orientation of this bearing system is assumed
o Denotes Iron Monument

Utility and Drainage Easements are Shown Thus:

Being 5 feet in width, unless otherwise indicated, and adjoining lot lines, and 10 feet in width, unless otherwise indicated, and adjoining street lines as shown on the plat.

OLIVER OLSON ADDITION

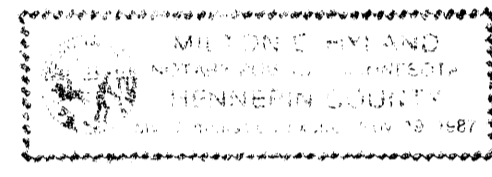
KNOW ALL MEN BY THESE PRESENTS: That Oliver R. Olson and Donna J. Olson, his wife, owners and proprietors and TCF Banking and Savings, F.A., a United States corporation, mortgagee of the following described property situate in the County of Anoka, State of Minnesota, to-wit:

Lot 1, Block 1, VEITS 2ND ADDITION, according to the plat thereof on file and of record in the office of the County Recorder in and for Anoka County, Minnesota
also
Lot 26, Revised Auditor's Subdivision No. 23, according to the plat thereof on file and of record in the office of the County Recorder in and for Anoka County, Minnesota

Have caused the same to be surveyed and platted as OLIVER OLSON ADDITION and do hereby donate and dedicate to the public for public use forever the Road, easements for utility and drainage purposes as shown on the plat. In witness whereof said Oliver R. Olson and Donna J. Olson, his wife, have hereunto set their hands this 26th day of AUGUST, 1987. In witness whereof said TCF Banking and Savings, F.A., a United States corporation, has caused these present to be signed by its proper officers this 3rd day of December, 1987.

Signed: Oliver R. Olson Oliver R. Olson its Vice President
Donna J. Olson Donna J. Olson its Asst. Vice President
Clayton TCF BANKING and SAVINGS, F.A.
Donna J. Olson its Asst. Vice President

State of Minnesota
County of Hennepin The foregoing instrument was acknowledged before me this 26th day of AUGUST, 1987, by Oliver R. Olson and Donna J. Olson, his wife.



Milton E. Hyland
Notary Public, Hennepin County, Minnesota
My Commission Expires Nov. 19, 1987

State of Minnesota
County of Hennepin The foregoing instrument was acknowledged before me this 3rd day of December, 1987, by TCF Banking and Savings, F.A., a United States corporation.

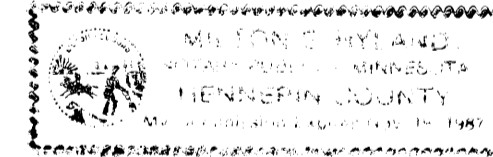


Brenda Hansen
Notary Public, HENNEPIN County, Minnesota
My Commission Expires MAY 27, 1992

I hereby certify that I have surveyed and platted the property described on this plat as OLIVER OLSON ADDITION; that this plat is a correct representation of said survey; that the distances are correctly shown on said plat in feet and hundredths of a foot; that all monuments have been correctly placed in the ground as shown on said plat; that the outside boundary lines are correctly designated on said plat; and that there are no wetlands to be designated on said plat.

Raymond A. Prasch
Raymond A. Prasch, Registered Land Surveyor
Minnesota Registration No. 6743

State of Minnesota
County of Hennepin The foregoing instrument was acknowledged before me this 13th day of AUGUST, 1987, by Raymond A. Prasch, Registered Land Surveyor.



Milton E. Hyland
Milton E. Hyland, Notary Public, Henn. Co., Minn.
My Commission Expires November 19, 1987

We hereby certify that the City Council of the City of Fridley, Anoka County, Minnesota duly accepted and approved this plat of OLIVER OLSON ADDITION at a regular meeting thereof held this 15th day of JUNE, 1987.

CITY COUNCIL OF FRIDLEY, MINNESOTA
By William J. Mc Mayor
By Shirley A. Haapata Clerk

Checked and approved this 11th day of Jan, 1988.

794368
OFFICE OF COUNTY RECORDER
STATE OF MINNESOTA COUNTY OF ANOKA
I hereby certify that the within instrument was duly recorded for record on the JAN 19 day of 1988 at 1:10 o'clock P.M. and was duly recorded in book 38 of Plats 44
Ted J. Omsdahl
County Recorder
By Sue Kay Ege
Deputy

"NO DELINQUENT TAXES AND TRANSFER ENTLED"
Jan 19 1988
Charles R. Lohr
Auditor, Anoka County
By J. H. Henry
Deputy

"NO DELINQUENT TAXES AND TRANSFER ENTLED"
Jan 18 1988
Charles R. Lohr
Auditor, Anoka County
By J. H. Henry
Deputy

1-19-88
I HEREBY CERTIFY THAT THE TAXES PAYABLE IN THE YEAR 1988 ON THE LANDS DESCRIBED WITHIN ARE PAID
Donald C. Bailey
Anoka County Treasurer
J. H. Henry - Deputy

W. D. O'Brien
County Surveyor, Anoka County, Minnesota

