

ORRIN THOMPSON'S RIVERVIEW TERRACE 12th ADDITION

CITY OF COON RAPIDS COUNTY OF ANOKA

NORTH

SCALE = 1"=100'

○ Denotes Iron Monument
Marked "R.L.S. 7726"
Bearings are Assumed
DECEMBER 1968

KNOW ALL MEN BY THESE PRESENTS: That Orrin E. Thompson Construction Corporation, a Minnesota corporation, owner and proprietor of the following described property situate in the County of Anoka, State of Minnesota to wit: Lots One (1) to Eleven (11) inclusive, Block Two (2), Appleton's River Drive, according to the plat thereof on file and of record in the office of the Register of Deeds in and for Anoka County, Minnesota, have caused the same to be surveyed and platted as ORRIN THOMPSON'S RIVERVIEW TERRACE 12th ADDITION, subject to drainage and utility easements as shown on the annexed plat. In witness whereof said Orrin E. Thompson Construction Corporation has caused these presents to be signed by its proper officers and its corporate seal to be hereunto affixed this 30th day of December A.D. 1968.

In Presence Of:

Robert Bjorklund
Rolo Eckwall

As to Orrin E. Thompson
and Gary W. Thompson

ORRIN E. THOMPSON CONSTRUCTION CORPORATION

Orrin E. Thompson
ORRIN E. THOMPSON - President
Gary W. Thompson
GARY W. THOMPSON - Vice President

State of Minnesota
County of Hennepin On this 7th day of January A.D. 1968, before me a Notary Public, within and for said County and State personally appeared Orrin E. Thompson and Gary W. Thompson, who being each by me duly sworn did say that they are respectively President and Vice President of Orrin E. Thompson Construction Corporation, the corporation named in the foregoing instrument; that the corporate seal affixed to said instrument is the corporate seal of said corporation and that said instrument was signed and sealed in behalf of said corporation by authority of its Board of Directors and said Orrin E. Thompson and Gary W. Thompson acknowledged said instrument to be the free act and deed of said corporation.

Rolo Eckwall
Notary Public, Hennepin County, Minnesota
My Commission Expires April 25, 1973

I hereby certify that I have surveyed and platted the property described on this plat as ORRIN THOMPSON'S RIVERVIEW TERRACE 12th ADDITION, that this plat is a correct representation of said survey, that all distances are correctly shown on said plat in feet and decimals of a foot, that all monuments have been correctly placed in the ground as shown on said plat, that the outside boundary lines are correctly designated on said plat, and that there are no wetlands or public highways to be designated on said plat other than as shown thereon.

Charles H. Winden
Surveyor - Minnesota Registration No. 7726

State of Minnesota
County of Hennepin Above certificate subscribed and sworn to before me, a Notary Public, within and for said County and State this 30th day of December A.D. 1968.

ERNEST G. RUD
Notary Public, Hennepin County, Minn.
My Commission Expires July 10, 1975.

Ernest G. Rud
Notary Public, Hennepin County, Minnesota
My Commission Expires July 10, 1975

We hereby certify that the City of Coon Rapids, Anoka County, Minnesota duly accepted and approved the annexed plat of ORRIN THOMPSON'S RIVERVIEW TERRACE 12th ADDITION, at a regular meeting thereof held this 4 day of March A.D. 1968.

CITY OF COON RAPIDS, ANOKA COUNTY, MINNESOTA
by Robert C. Voss its Mayor
by Mary G. Nestum its Clerk

The annexed plat of ORRIN THOMPSON'S RIVERVIEW TERRACE 12th ADDITION was approved by the Planning and Zoning Commission of the City of Coon Rapids at a regular meeting thereof held this 3 day of MARCH A.D. 1968.

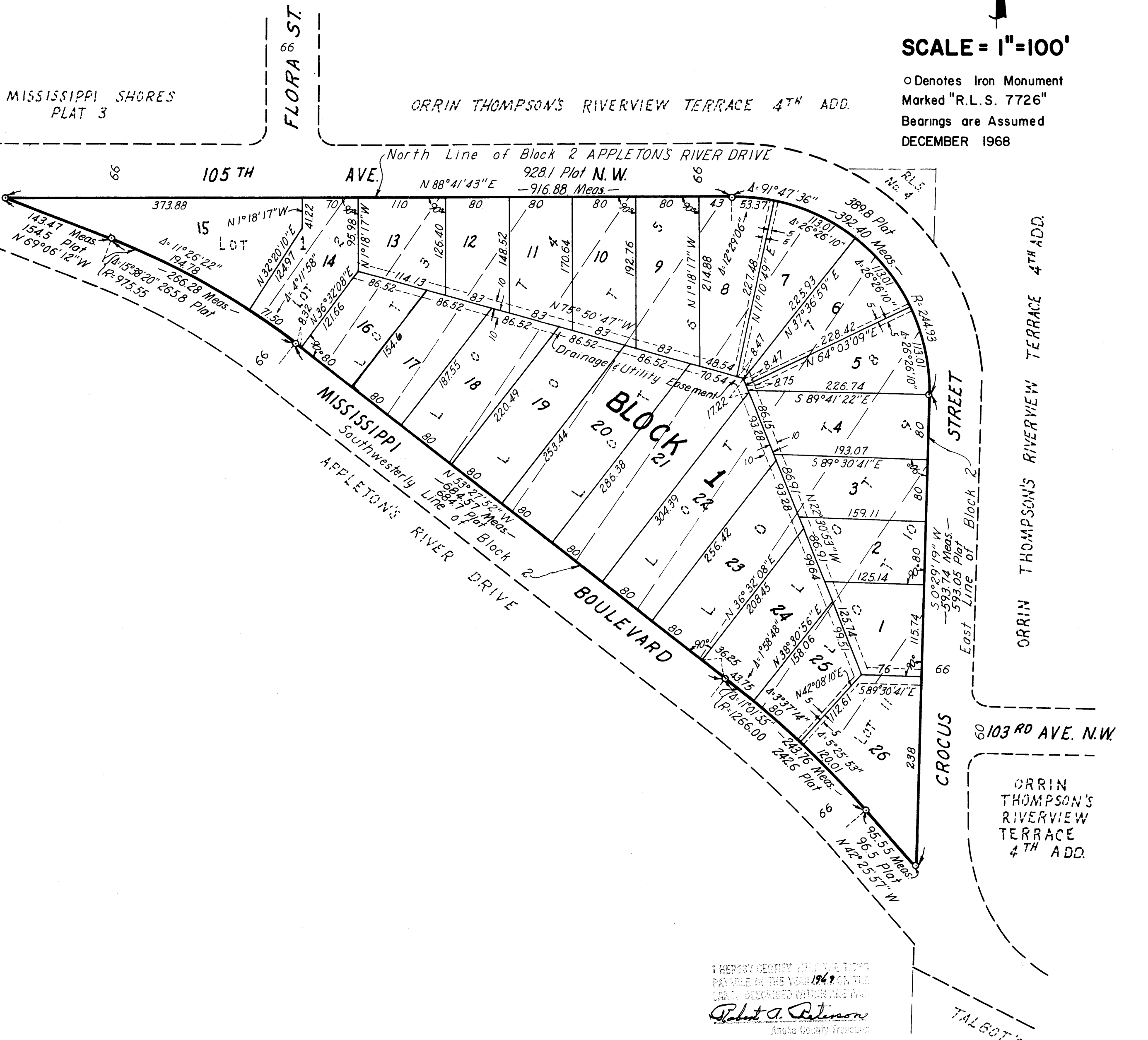
CITY OF COON RAPIDS, ANOKA COUNTY, MINNESOTA
by Robert M. Lamm its Chairman
by William J. McLean Jr. its Clerk

Checked and approved this 4th day of March A.D. 1968.

Poland W. Anderson
Anoka County Surveyor

63700

Office of REGISTRAR OF TITLES
STATE OF MINNESOTA
COUNTY OF ANOKA
I hereby certify that the within Instrument was filed in this office on the ____ day of MAR 4, 1968 A.D. 19__ at 2:30 o'clock P.M.
By Rolo Eckwall Registrar of Titles
By Charles H. Winden DEPUTY REGISTRAR OF TITLES



MISSISSIPPI SHORES PLAT 3

ORRIN THOMPSON'S RIVERVIEW TERRACE 4TH ADD.

North Line of Block 2 APPLETON'S RIVER DRIVE
9281 Plat N.W.
N 88° 41' 43" E - 916.88 Meas.

PROPERTY ACQUIRED BY THE CITY OF COON RAPIDS, MINN. IN 1964 AND PAID FOR BY THE CITY OF COON RAPIDS, MINN. IN 1964. THE LAND DESCRIBED HEREIN IS THE PROPERTY OF THE CITY OF COON RAPIDS, MINN.
Robert A. Peterson
Anoka County Treasurer

TAXES PAID
This 4th day of March 1968
Kenneth W. Campbell
Auditor, Anoka County, Minn.
By Lydia E. Lege Deputy

Surveyed By:
C.R. WINDEN & ASSOCIATES
LAND SURVEYORS