

OTTER CROSSING SECOND ADDITION

CITY OF LINO LAKES
COUNTY OF ANOKA
SEC. 24, T. 31, R. 22

KNOW ALL PERSONS BY THESE PRESENTS: That BLino, LLC, a Minnesota limited liability company, owner of the following described property:

Outlot A, OTTER CROSSING, according to the recorded plat thereof, Anoka County, Minnesota.

Has caused the same to be surveyed and platted as OTTER CROSSING SECOND ADDITION and does hereby dedicate to the public for public use the public way and the drainage and utility easements as shown on this plat.

In witness whereof said BLino, LLC, a Minnesota limited liability company, has caused these presents to be signed by its proper officer this 26th day of AUGUST, 2022.

BLino, LLC
Paul Schreier
signature
Paul Schreier as President
printed Title

STATE OF MINNESOTA
COUNTY OF RAMSEY
This instrument was acknowledged before me on 25th DAY OF AUGUST, 2022 by PAUL SCHREIER as PRESIDENT of BLino, LLC, a Minnesota limited liability company, on behalf of the company.

J. Malone
signature
J. MALONE
printed
Notary Public, RAMSEY County, Minnesota
My Commission Expires 1/31/26

SURVEYOR'S CERTIFICATE

I Peter J. Hawkinson do hereby certify that this plat was prepared by me or under my direct supervision; that I am a duly Licensed Land Surveyor in the State of Minnesota; that this plat is a correct representation of the boundary survey; that all mathematical data and labels are correctly designated on this plat; that all monuments depicted on this plat have been, or will be correctly set within one year; that all water boundaries and wet lands, as defined in Minnesota Statutes, Section 505.01, Subd. 3, as of the date of this certificate are shown and labeled on this plat; and all public ways are shown and labeled on this plat.

Dated this 25th day of August, 2022.

Peter J. Hawkinson
signature
Peter J. Hawkinson, Licensed Land Surveyor
Minnesota License No. 42299

STATE OF MINNESOTA
COUNTY OF Dakota
This instrument was acknowledged before me on this 25th day of August, 2022 by Peter J. Hawkinson.

Kari Olson
signature
Kari Olson
printed
Notary Public, Dakota County, Minnesota
My Commission Expires 01/31/2024

CITY COUNCIL, CITY OF LINO LAKES, Minnesota

This plat of OTTER CROSSING SECOND ADDITION was approved and accepted by the City Council of the City of Lino Lakes, Minnesota at a regular meeting thereof held this 8th day of August, 2022, and said plat is in compliance with the provisions of Minnesota Statutes, Section 505.03, Subd. 2.

City Council, City of Lino Lakes, Minnesota
By: J.M. Parrenty Mayor
By: Edmund Vatter Clerk

COUNTY SURVEYOR

I hereby certify that in accordance with Minnesota Statutes, Section 505.021, subd. 11, this plat has been reviewed and approved this 31st day of August, 2022.

By: David M. Zieglmeier
David M. Zieglmeier
Anoka County Surveyor

COUNTY AUDITOR/TREASURER

Pursuant to Minnesota Statutes, Section 505.021, Subd. 9, taxes payable in the year 2022 on the land hereinbefore described have been paid. Also, pursuant to Minnesota Statutes, Section 272.12, there are no delinquent taxes and transfer entered this 31st day of August, 2022.

Pamela J LeBlanc
Property Tax Administrator
By: [Signature] Deputy

COUNTY RECORDER/REGISTRAR OF TITLES COUNTY OF ANOKA, STATE OF MINNESOTA

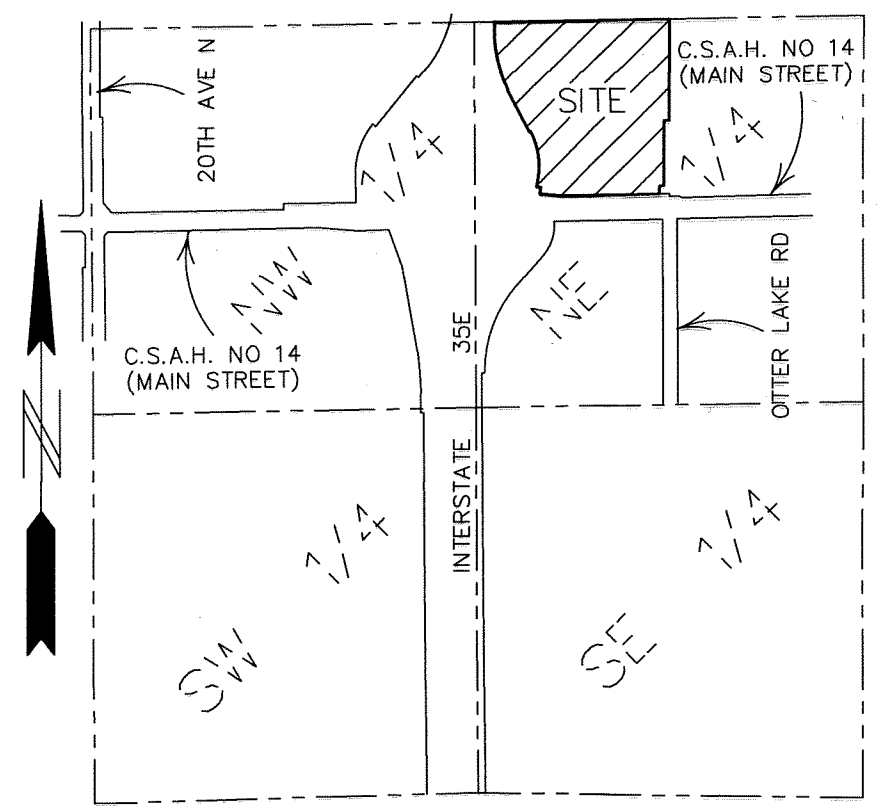
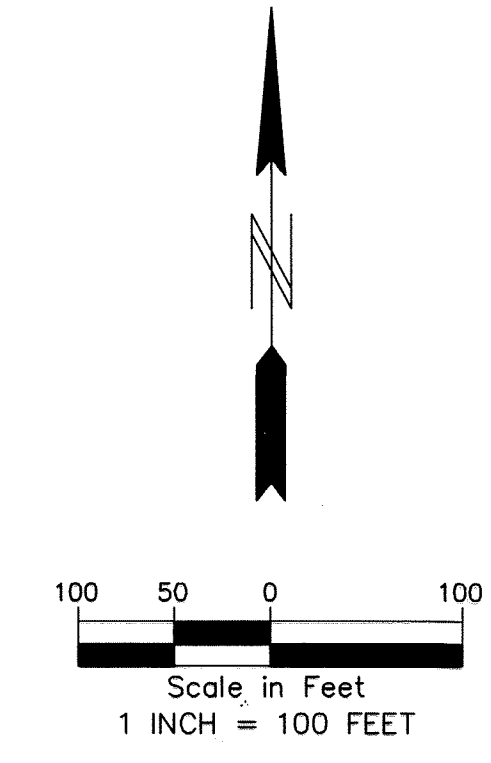
I hereby certify that this plat of OTTER CROSSING SECOND ADDITION was filed in the Office of the County Recorder/Registrar of Titles for public record on this 31st day of August, 2022, at 10:41 o'clock A.M. and was duly recorded as Document Number 004398.001.

Pamela J LeBlanc
County Recorder/Registrar of Titles
By: [Signature] Deputy

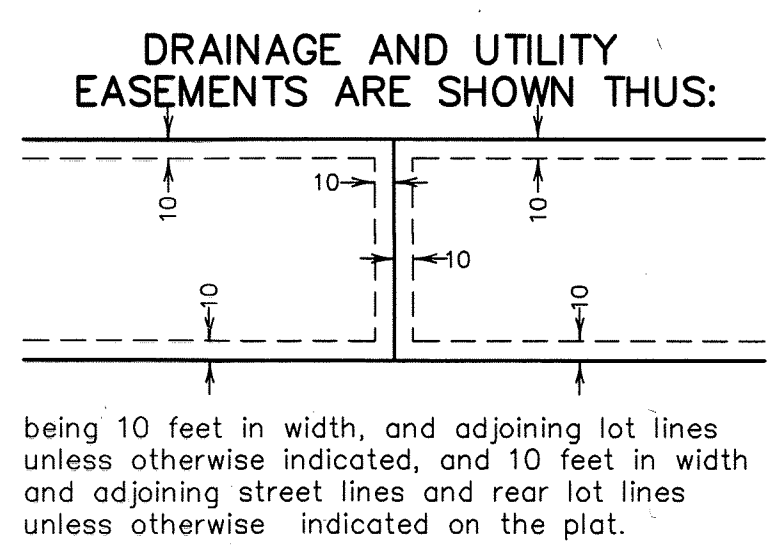
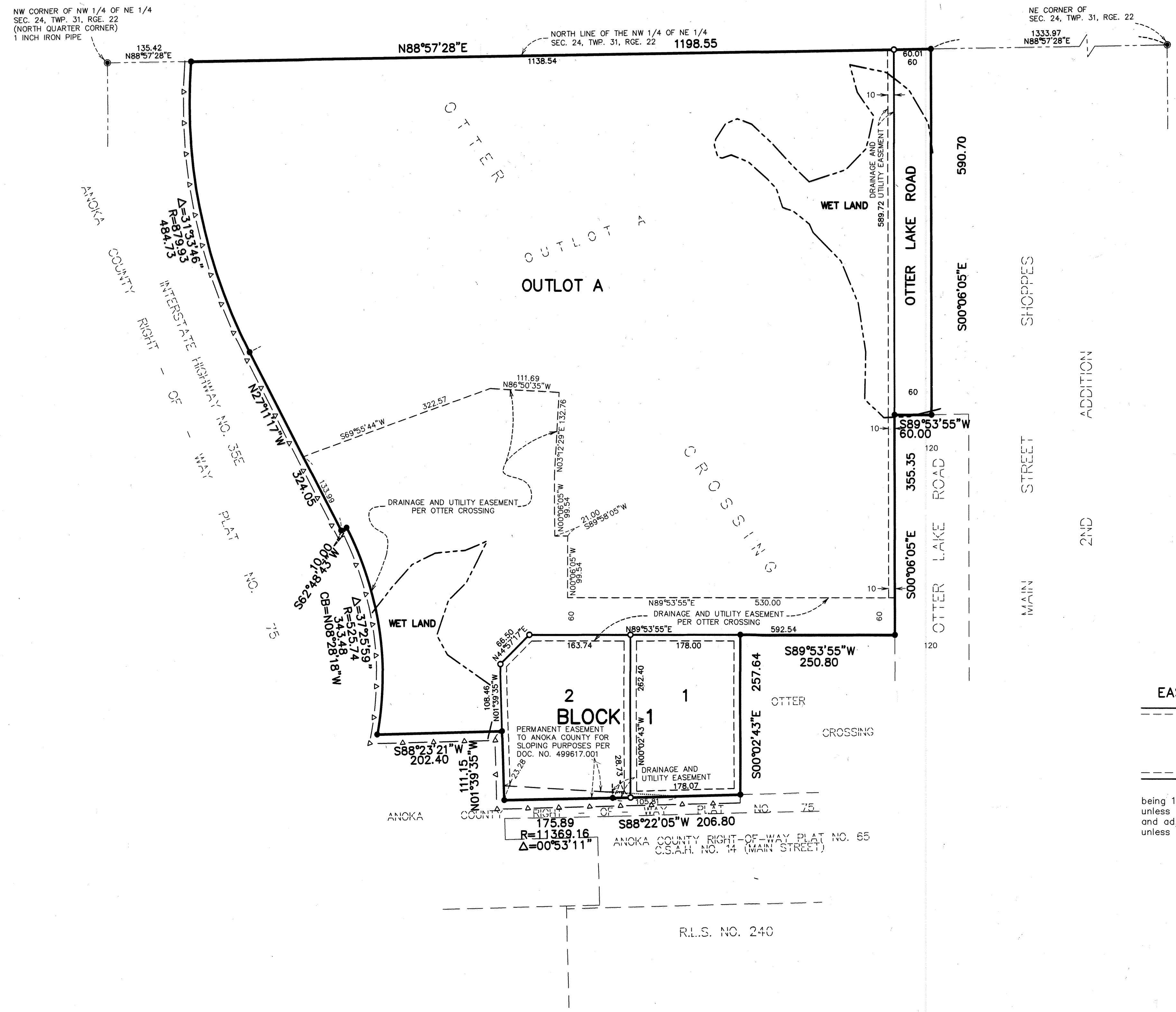
\$56.00

OTTER CROSSING SECOND ADDITION

CITY OF LINO LAKES
COUNTY OF ANOKA
SEC. 24, T. 31, R. 22



SECTION 24, TWP. 31, RGE. 22
LOCATION MAP
NOT TO SCALE



THE ORIENTATION OF THIS BEARING SYSTEM IS BASED ON THE NORTH LINE OF THE NW 1/4 OF THE NE 1/4 OF SEC. 24, TWP. 31, RGE. 22, WHICH IS ASSUMED TO HAVE A BEARING OF NORTH 88°57'28" EAST.

- DENOTES FOUND ANOKA COUNTY MONUMENT
- DENOTES 1/2 INCH BY 14 INCH IRON PIPE MONUMENT SET AND MARKED BY LICENSE NUMBER 42299, OR WILL BE SET WITHIN ONE YEAR OF RECORDING OF THIS PLAT.
- DENOTES FOUND 1/2 INCH IRON PIPE MONUMENT MARKED BY LICENSE NUMBER 42299.
- △ DENOTES RIGHT OF ACCESS DEDICATED TO ANOKA COUNTY PER THE PLAT OF OTTER CROSSING.
- DENOTES EDGE OF WET LAND