

# OTTE'S ADDITION

## to LEXINGTON — ANOKA COUNTY — MINNESOTA

KNOW ALL MEN BY THESE PRESENTS:— That George F. Otte, a single person, (Carl D. Otte, a single person, Arthur E. Otte and Esther A. Otte, husband and wife - the owners of all that part of the Northwest Quarter of the Northeast Quarter (17 1/2 NE 1/4), Section Thirty-five (35), Township Thirty-one (31), Range Twenty-three (23) that lies on the southerly side of Trunk Highway No. 8 as now established, and comprising 5.25 acres of land:

HEREBY CERTIFY that they have caused the same to be surveyed, subdivided and platted as shown on this plat and hereafter to be known as OTTE'S ADDITION to Lexington. All roads, avenues and drives as indicated on the plat, unless otherwise established, are hereby dedicated to the public for public use forever.

IN WITNESS WHEREOF we have hereunto set our hands and seals this 2<sup>nd</sup> day of October A. D. 1950

In presence of  
Erasmus C. Nielsen  
Arthur E. Otte  
George H. Otte  
Carl D. Otte

STATE OF MINNESOTA  
 COUNTY OF ANOKA

On this 2<sup>nd</sup> day of October A. D. 1950 before me personally appeared George F. Otte and Carl D. Otte, both single persons, Arthur E. Otte and Esther A. Otte, husband and wife, to be known to be the persons described in and who executed the foregoing instrument and acknowledged they executed the same as their free act and deed.

Erasmus C. Nielsen Notary Public, Anoka County, Minnesota  
 My commission expires 1951

I, Byron G. Lethro, hereby certify that I have surveyed and platted the land described in the dedication on this sheet as OTTE'S ADDITION to the Village of Lexington; that this plat is a correct representation of said survey; that all courses, distances and angles are correctly shown on the plat; that the outside boundaries are correctly designated; that the monuments for the guidance of future surveys have been correctly placed in the ground as shown on the plat; that the size of all lots are as indicated and that there are no wet lands or public highways to be designated on the plat other than are hereon shown.

Byron G. Lethro Registered Surveyor

STATE OF MINNESOTA  
 COUNTY OF WASHINGTON

Above certificate subscribed and sworn to before me, a Notary Public, within and for said County and State on this 30<sup>th</sup> day of September A. D. 1950

Theo Nelson Notary Public, Washington County, Minnesota  
 My commission expires July 24 - 1953

This plat approved as to form and execution this 2<sup>nd</sup> day of October A. D. 1950

Erasmus C. Nielsen County Attorney, Anoka County, Minnesota

STATE OF MINNESOTA  
 COUNTY OF ANOKA  
 VILLAGE OF LEXINGTON

At a meeting of the Village Council of Lexington held on the 30 day of Sept. A. D. 1950 the annexed plat was approved and accepted.

Erasmus C. Nielsen Mayor  
Ted J. Chapman Village Clerk

I hereby certify that taxes for the year 1949 on lands herein described are paid.

Chatter Bowers  
 County Treasurer, Anoka County, Minnesota

Taxes paid and transfer entered this 27 day of October

A. D. 1950  
E. A. Carlson by Stanstad, Deputy  
 County Auditor, Anoka County, Minnesota

Filed for record this \_\_\_ day of \_\_\_  
 A. D. 1950 at \_\_\_ o'clock \_\_\_ M.

Register of Deeds, Anoka County  
 Minnesota

137058

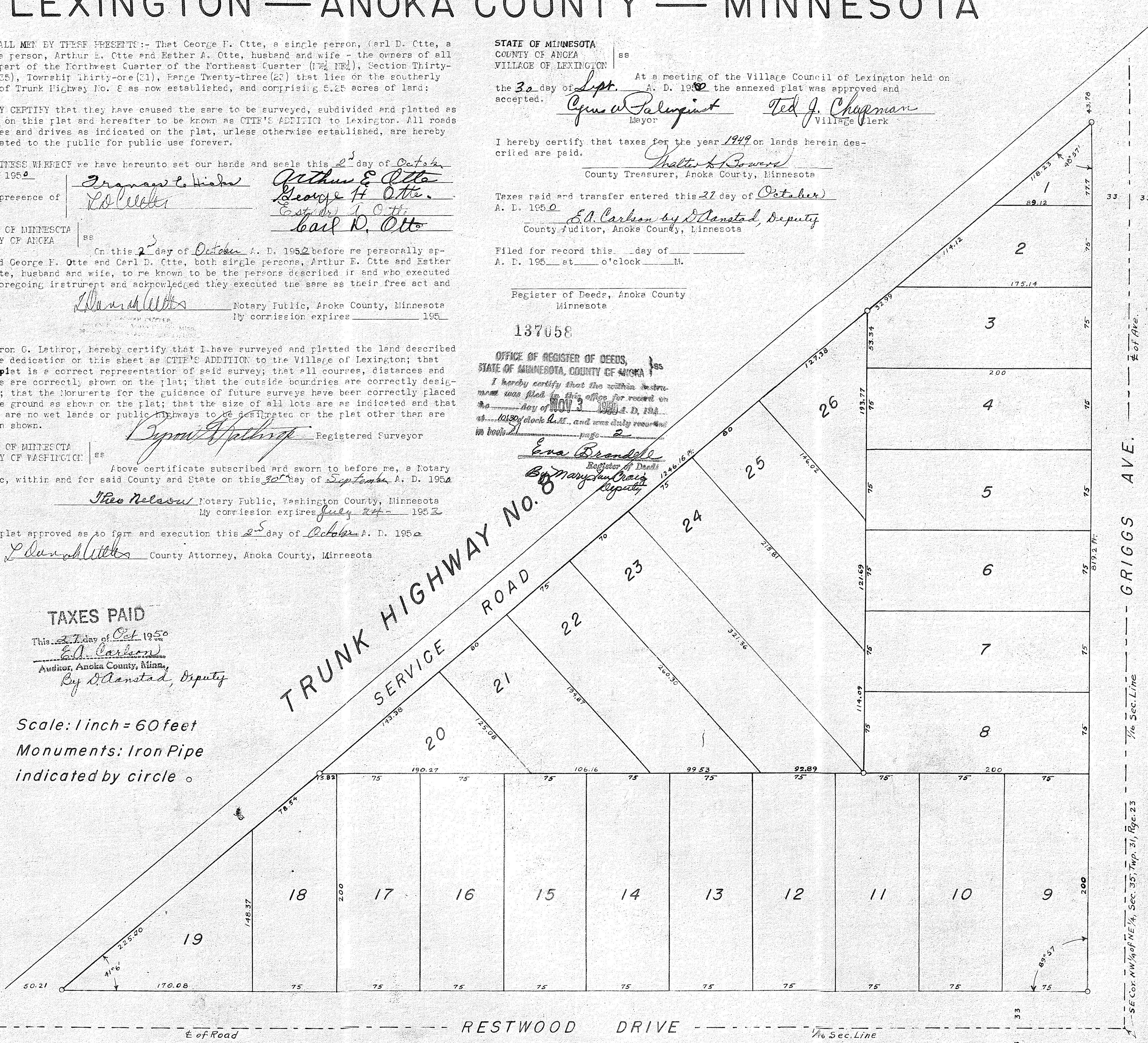
OFFICE OF REGISTER OF DEEDS,  
 STATE OF MINNESOTA, COUNTY OF ANOKA  
 I hereby certify that the within instrument was filed in this office for record on the day of NOV 3 1950 A. D. 1950 at 10:30 o'clock A.M. and was duly recorded in book 21 page 2

Eva Brandell  
 Register of Deeds  
By Mary Ann Craig  
 Deputy

### TAXES PAID

This 2<sup>nd</sup> day of Oct. 1950  
E. A. Carlson  
 Auditor, Anoka County, Minn.  
 By Stanstad, Deputy

Scale: 1 inch = 60 feet  
 Monuments: Iron Pipe  
 indicated by circle



GRIGGS AVE. --- 1/4 of Ave. --- 1/2 Sec. Line --- 1/4 Sec. Line --- 1/4 Sec. Line --- 1/4 Sec. Line

RESTWOOD DRIVE

E of Road

1/4 Sec. Line

33

SE Cor. NW 1/4 of NE 1/4, Sec. 35, Twp. 31, Rge. 23