

CITY OF RAMSEY  
COUNTY OF ANOKA  
SECTION 16, TOWNSHIP 32, RANGE 25

# PACT ADDITION

KNOW ALL PERSONS BY THESE PRESENTS: That The Church of Saint Katharine Drexel, Ramsey, Minnesota, a Minnesota religious corporation, owner of the following described property:

That part of the Southeast Quarter of the Northwest Quarter lying East of the West 185 feet of said Southeast Quarter of the Northwest Quarter, Section 16, Township 32, Range 25, Anoka County, Minnesota.

Has caused the same to be surveyed and platted as PACT ADDITION and does hereby dedicate to the public for public use the public ways and the drainage and utility easements as created by this plat.

In witness whereof said The Church of Saint Katharine Drexel, Ramsey, Minnesota, a Minnesota religious corporation, has caused these presents to be signed by its proper officers this 23rd day of September, 2022.

THE CHURCH OF SAINT KATHARINE DREXEL, RAMSEY, MINNESOTA  
*Paul Jaroszeski*  
Paul Jaroszeski, Vice President and Pastor  
STATE OF Minnesota  
COUNTY OF Anoka

This instrument was acknowledged before me on September 23, 2022 by Paul Jaroszeski, Vice President and Pastor of The Church of Saint Katharine Drexel, Ramsey, Minnesota, a Minnesota religious corporation, on behalf of the corporation.

Signature [Signature]  
Printed Larry Mountain  
Notary Public, Washington County, Minnesota  
My Commission Expires 1-31-25

THE CHURCH OF SAINT KATHARINE DREXEL, RAMSEY, MINNESOTA  
*Kathy Reed*  
Kathy Reed, Secretary  
STATE OF Minnesota  
COUNTY OF Anoka

This instrument was acknowledged before me on September 23, 2022 by Kathy Reed, Secretary for The Church of Saint Katharine Drexel, Ramsey, Minnesota, a Minnesota religious corporation, on behalf of the corporation.

Signature [Signature]  
Printed Larry Mountain  
Notary Public, Washington County, Minnesota  
My Commission Expires 1-31-25

I Gary C. Huber do hereby certify that this plat was prepared by me or under my direct supervision; that I am a duly Licensed Land Surveyor in the State of Minnesota; that this plat is a correct representation of the boundary survey; that all mathematical data and labels are correctly designated on this plat; that all monuments depicted on this plat have been, or will be correctly set within one year; that all water boundaries and wet lands, as defined in Minnesota Statutes, Section 505.01, Subd. 3, as of the date of this certificate are shown and labeled on this plat; and all public ways are shown and labeled on this plat.

Dated this 26th day of September, 2022  
*Gary C. Huber*  
Gary C. Huber, Licensed Land Surveyor  
Minnesota License No. 22036

STATE OF MINNESOTA  
COUNTY OF DAKOTA  
This instrument was acknowledged before me on SEPTEMBER 26, 2022, by Gary C. Huber.

Signature [Signature]  
Printed GARY C. HUBER  
Notary Public, CARVER County, MINNESOTA  
My Commission Expires JANUARY 31, 2026

CITY COUNCIL, CITY OF RAMSEY, MINNESOTA  
This plat of PACT ADDITION was approved and accepted by the City Council of the City of Ramsey, Minnesota at a regular meeting thereof held this 12th day of JULY, 2022, and said plat is in compliance with the provisions of Minnesota Statutes, Section 505.03, Subd. 2.

City Council, City of Ramsey, Minnesota  
By Mark E. Ferguson, Mayor  
By [Signature], Clerk

ANOKA COUNTY SURVEYOR  
I hereby certify that in accordance with Minnesota Statutes, Section 505.021, Subd. 11, this plat has been reviewed and approved this 29th day of September, 2022.

By David M. Ziegler  
David M. Ziegler  
Anoka County Surveyor

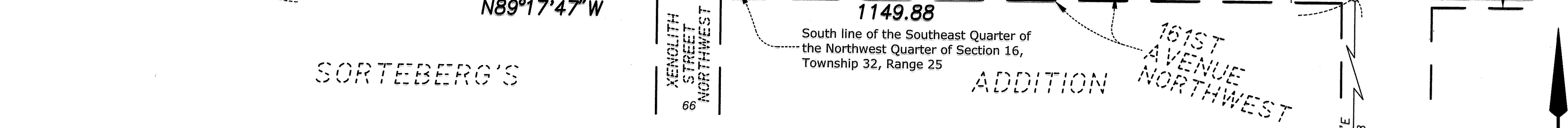
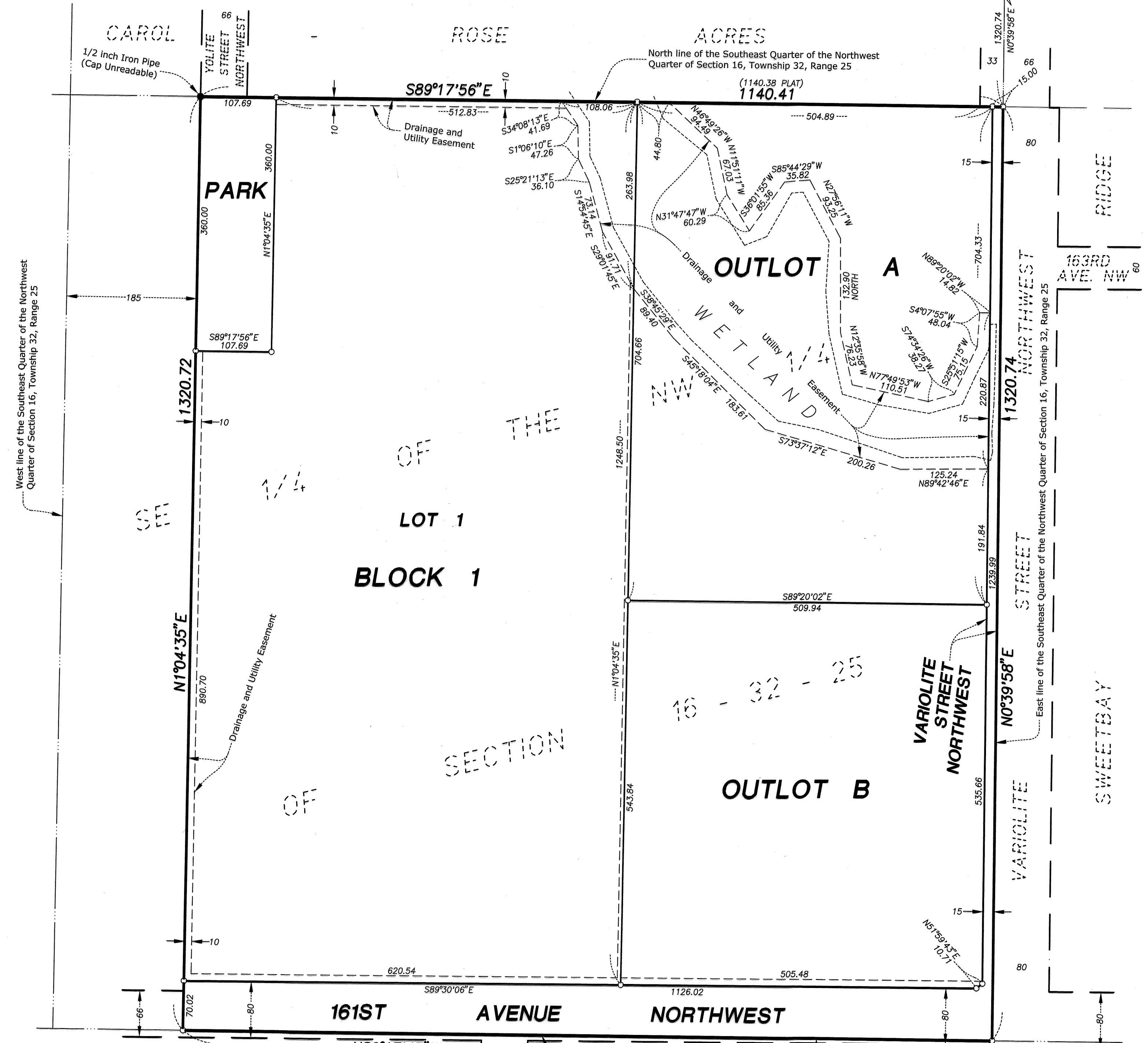
ANOKA COUNTY AUDITOR/TREASURER  
Pursuant to Minnesota Statutes, Section 505.021, Subd. 9, taxes payable in the year 2022 on the land hereinbefore described have been paid. Also, pursuant to Minnesota Statutes, Section 272.12, there are no delinquent taxes and transfer entered this 5th day of October, 2022.

Pamela J LeBlanc  
Property Tax Administrator  
By [Signature], Deputy

COUNTY RECORDER/ REGISTRAR OF TITLES  
County of Anoka, State of Minnesota  
I hereby certify that this plat of PACT ADDITION was filed in the office of the County Recorder/Registrar of Titles for public record on this 5th day of October, 2022, at 1:51P o'clock P.M. and was duly recorded as Document Number 605353.003

Pamela J LeBlanc  
County Recorder/Registrar of Titles  
By [Signature], Deputy

Rehder and Associates, Inc.



Bearings are based on the East line of the Southeast Quarter of the Northwest Quarter of Section 16, Township 32, Range 25 having a bearing of N0°39'58"E.  
• Denotes iron monument found.  
○ Denotes 1/2 inch by 14 inch iron pipe set and marked by Minnesota License No. 22036.  
(1140.38 PLAT) Denotes distance per the plat of CAROL-ROSE ACRES  
Wetlands shown delineated by Kjolhaug Environmental Services Company, Inc. in January, 2022.

