

# PARK HIGHLANDS 2<sup>ND</sup> ADDITION

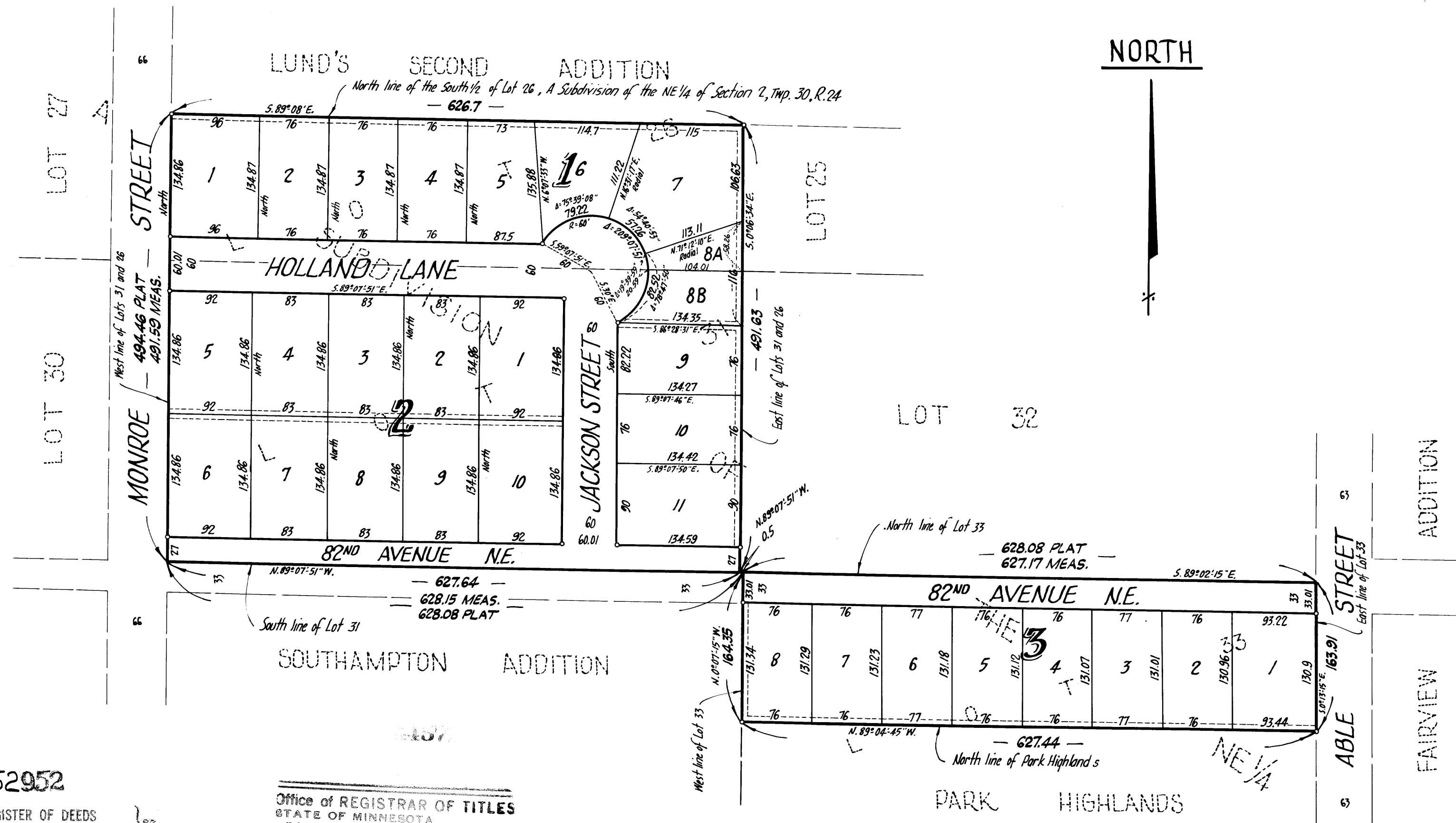
— VILLAGE OF SPRING LAKE PARK — COUNTY OF ANOKA — MINNESOTA —

Denotes Utility and Drainage Easement, being 5 feet on each side of the lot line, unless otherwise indicated.

Bearings are assumed Scale 1"=100' March, 1963

*Suburban Engineering, Inc.*  
—Engineers and Surveyors—

Denotes Iron Monument



252952

OFFICE OF REGISTER OF DEEDS  
STATE OF MINNESOTA, COUNTY OF ANOKA

I hereby certify that the within instrument was filed in this office for record on the 30<sup>th</sup> day of September, A.D. 1963.  
at 4 o'clock P.M., and was duly recorded in the 22 volume of Platage.

*Gertrude Skinner*  
Register of Deeds  
By *Margaret Russell*  
Deputy

Office of REGISTRAR OF TITLES  
STATE OF MINNESOTA  
COUNTY OF ANOKA

I hereby certify that the within instrument was filed in this office on the 30<sup>th</sup> day of September, A.D. 1963, at 4 o'clock P.M.  
*Gertrude Skinner* Registrar of Titles  
*Eileen Boettcher* DEPUTY REGISTRAR OF TITLES

We hereby certify that the Village of Spring Lake Park's Council, Anoka County, Minnesota, duly accepted and approved the annexed plat of PARK HIGHLANDS 2<sup>ND</sup> ADDITION, at a regular meeting thereof held this 24 day of September, A.D. 1963.

VILLAGE OF SPRING LAKE PARK, ANOKA COUNTY, MINN.  
By *Richard M. Zabel* Mayor  
By *John M. Conde* Clerk

Checked and approved this 30<sup>th</sup> day of September, A.D. 1963.  
*Robert W. Anderson*  
Anoka County Surveyor

Checked and approved on this 10<sup>th</sup> day of September, A.D. 1963.  
By *Wm. J. Shaw*  
Village Attorney

I hereby certify that I have surveyed and platted the property described on this plat as PARK HIGHLANDS 2<sup>ND</sup> ADDITION; that this plat is a correct representation of said survey; that all distances are correctly shown on the plat in feet and decimals of a foot; that the monuments for guidance of future surveys have been correctly placed in the ground as shown on said plat; that the outside boundary lines are correctly designated on said plat, and that there are no wet lands or public highways to be designated on said plat other than as shown thereon.

*E. A. Rathbun*  
Surveyor - Minnesota Registration No. 3795

State of Minnesota  
County of Hennepin

Above certificate subscribed and sworn to before me, a Notary Public, within and for said County and State, this 10<sup>th</sup> day of June, A.D. 1963.

TAXES PAID

This 30<sup>th</sup> day of Sept, 1963  
*Kenneth W. Campbell*  
Auditor, Anoka County, Minn.  
*W. D. Adair*, Deputy

*Warren O. Olson*  
Notary Public, Hennepin County, Minnesota  
My Commission Expires July 13, 1967

KNOW ALL MEN BY THESE PRESENTS: that Dietrich-Francis Co., Inc., a Minnesota Corporation, owner and proprietor, and that Fidelity Bank and Trust Company, a Minnesota Corporation, Mortgagee of the following described property situate in the State of Minnesota and County of Anoka, to-wit: The South 1/2 of Lot 26, all of Lot 31 and all that part of Lot 33 lying North of Park Highlands, A Subdivision of the Northeast 1/4 of Section 2, Township 30, Range 24, Anoka County, Minnesota; have caused the same to be surveyed and platted as PARK HIGHLANDS 2<sup>ND</sup> ADDITION; and do hereby donate and dedicate to the public for public use forever the Lane, Street and Avenue as shown on the annexed plat; subject to the Utility and Drainage Eastments as shown on the annexed plat; in witness whereof Dietrich-Francis Co., Inc. has caused these presents to be signed by its proper officers to be hereunto affixed this 16<sup>th</sup> day of July, A.D. 1963; and in witness whereof Fidelity Bank and Trust Company has caused these presents to be signed by its proper officers and its corporate seal to be hereunto affixed this 16<sup>th</sup> day of July, A.D. 1963.

In Presence of  
*Margaret P. Zabel* As to Donald E. Dietrich and Duane Dietrich  
*Robert P. Lockwood* Dietrich  
DIETRICH-FRANCIS CO., INC.  
*Donald E. Dietrich* President  
*Duane Dietrich* Vice President

In Presence of  
*June Robinson* As E. V. Klopp and David M. Gilman  
*Roscoe Prandery* Gilman  
FIDELITY BANK AND TRUST COMPANY  
*E. V. Klopp* Vice President  
*David M. Gilman* Asst. Cashier

State of Minnesota On this 17 day of September, A.D. 1963, before me a Notary Public within and for said County and State, personally appeared Donald E. Dietrich and Duane Dietrich, to me personally known, who being by me duly sworn, did say that they are the President and Vice President respectively of Dietrich-Francis Co., Inc., the corporation named in the foregoing instrument; and that said instrument was signed in behalf of said corporation by authority of its Board of Directors, and said Donald E. Dietrich and Duane Dietrich acknowledged said instrument to be the free act and deed of said corporation.

*Margaret P. Zabel*  
Notary Public, Anoka County, Minnesota  
My Commission Expires June 24, 1965

State of Minnesota On this 16<sup>th</sup> day of July, A.D. 1963, before me, a Notary Public within and for said County and State, personally appeared E. V. Klopp and David M. Gilman, to me personally known, who being by me duly sworn, did say that they are the Vice President and Assistant Cashier respectively of Fidelity Bank and Trust Company, the corporation named in the foregoing instrument; and that said instrument was signed and sealed in behalf of said corporation by authority of its Board of Directors, and said E. V. Klopp and David M. Gilman acknowledged said instrument to be the free act and deed of said corporation.

*June Robinson*  
Notary Public, Hennepin County, Minnesota  
My Commission Expires Aug 22, 1965

I HEREBY CERTIFY THAT TAXES FOR THE YEAR 1962 ON THE LANDS DESCRIBED HEREIN ARE PAID  
*Robert A. Peterson*  
County Treasurer