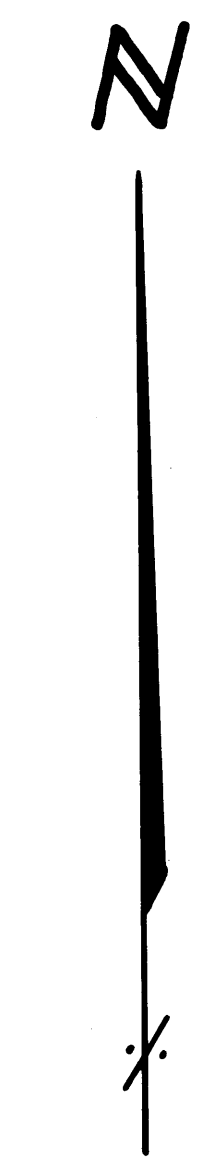


# PARK HIGHLANDS

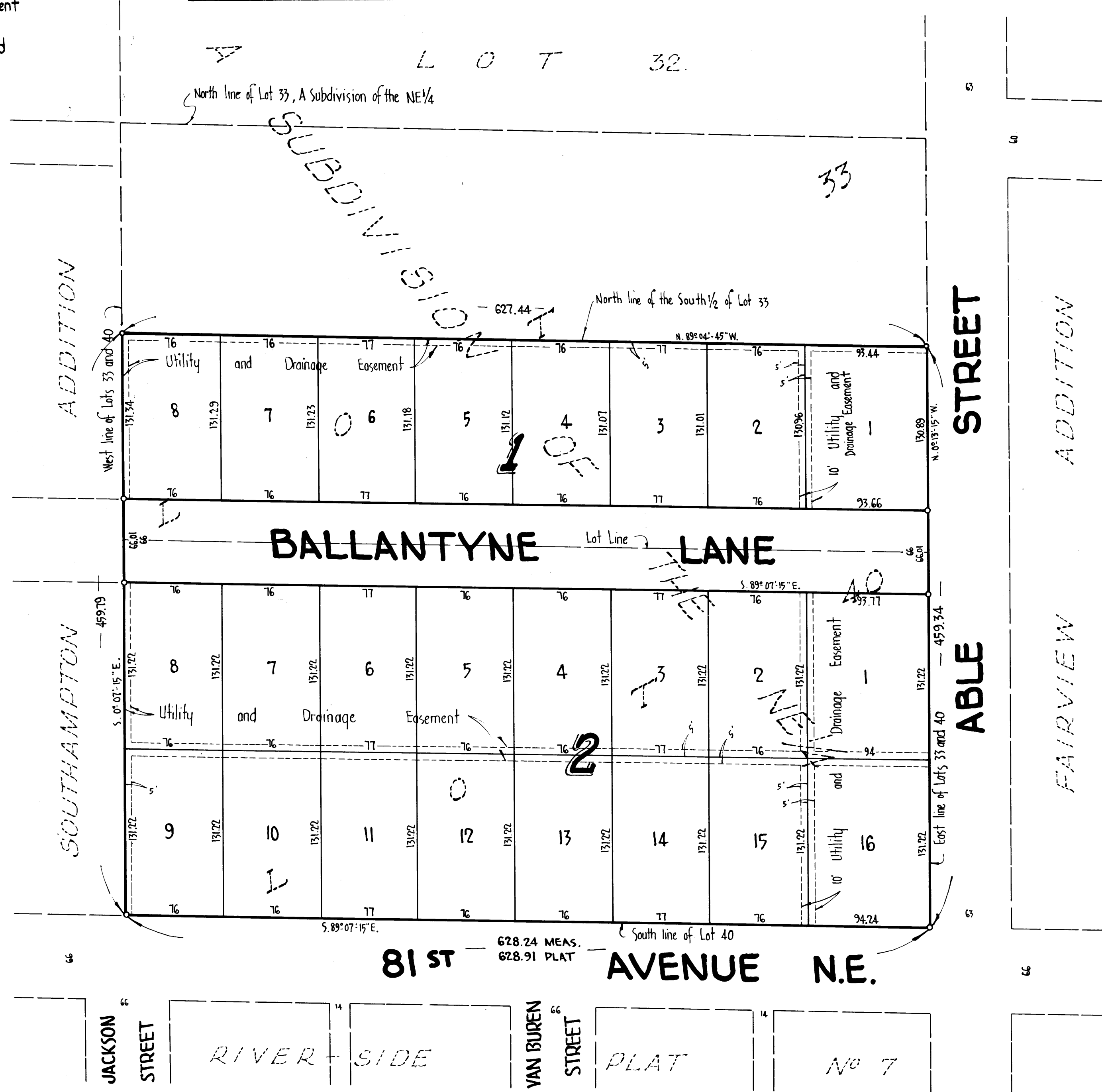
VILLAGE OF SPRING LAKE PARK, COUNTY OF ANOKA

o Denotes Iron Monument  
Bearings are assumed

*Suburban Engineering, Inc.*  
- Engineers and Surveyors



SCALE 1"=60'  
NOVEMBER, 1962



KNOW ALL MEN BY THESE PRESENTS: that Dietrich-Francis Co., Inc., a Minnesota Corporation, owner and proprietor of the following described property situate in the State of Minnesota and County of Anoka, to-wit: Lot 40 and the South 1/2 of Lot 33, A Subdivision of the Northeast Quarter, Section 2, Township 30, Range 24; has caused the same to be surveyed and platted as PARK HIGHLAND S; and do hereby donate and dedicate to the public for public use forever the Lane as shown on the annexed plat; subject to the Utility and Drainage Easements as shown on the annexed plat; in witness whereof Dietrich-Francis Co., Inc. has caused these presents to be signed by its proper officers to be hereunto affixed this 14 day of March A.D. 1963.

In Presence of  
Bill Raps As to Donald E. Dietrich and Duane Dietrich President  
Ralph Bauer Duane Dietrich Vice President

State of Minnesota On this 14th day of March A.D. 1963, before me a Notary Public County of Anoka within and for said County and State, personally appeared Donald E. Dietrich and Duane Dietrich, to me personally known, who being by me duly sworn, did say that they are the President and Vice President respectively of Dietrich-Francis Co., Inc., the corporation named in the foregoing instrument; and that said instrument was signed in behalf of said corporation by authority of its Board of Directors, and said Donald E. Dietrich and Duane Dietrich acknowledged said instrument to be the free act and deed of said corporation.

Grace L. Robinson  
 Notary Public, Anoka County, Minnesota  
 My Commission Expires March 18, 1964

I hereby certify that I have surveyed and platted the property described on this plat as PARK HIGHLAND S; that this plat is a correct representation of said survey; that all distances are correctly shown on the plat in feet and decimals of a foot; that the monuments for guidance of future surveys have been correctly placed in the ground as shown on said plat; that the outside boundary lines are correctly designated on said plat, and that there are no wet lands or public highways to be designated on said plat other than as shown thereon.

E. A. Rattner  
 Surveyor - Minnesota Registration No. 3795

State of Minnesota Above certificate subscribed and sworn to before me a Notary Public, within County of Hennepin and for said County and State, this 25th day of January A.D. 1963.

Warren C. Olson  
 Notary Public, Hennepin County, Minnesota  
 My Commission Expires July 13, 1967

We hereby certify that the Village of Spring Lake Park's Council, Anoka County, Minnesota, duly accepted and approved the annexed plat of PARK HIGHLAND S, at a regular meeting thereof held this 21st day of January A.D. 1963.

VILLAGE OF SPRING LAKE PARK, ANOKA COUNTY, MINN.  
 By Richard M. Zabel Mayor  
 By John M. Conde Clerk

Checked and approved this 15th day of March A.D. 1963.  
Robert W. Anderson  
 Anoka County Surveyor

Checked and approved on this 31st day of January A.D. 1963.

by Ann J. Olson Village Attorney

I HEREBY CERTIFY THAT TAXES FOR THE YEAR 1962 ON THE LANDS DESCRIBED WITHIN ARE PAID  
Robert A. Peterson  
 County Treasurer

TAXES PAID  
 This 14 day of Mar 1963  
Kenneth W. Campbell  
 Auditor, Anoka County, Minn.  
Wayne A. Heald Deputy

CLERK OF REGISTER OF DEEDS  
 STATE OF MINNESOTA, COUNTY OF ANOKA }  
 I hereby certify that the within instrument was filed in this office for record on the 14 day of MAR 1963 A.D. 1963 at 5:00 o'clock P.M. and was duly recorded in book 11 at page 16.  
Christine Edman  
 Register of Deeds  
 By Margaret Russell Deputy