

PARK MANOR 2ND ADDITION

City of Spring Lake Park
County of Anoka
Sec. 1, Twp. 30, Rge. 24

KNOW ALL PERSONS BY THESE PRESENTS: That Spring Lake Park Leased Housing Associates I, LLLP, owner of the following described property:

Lots 2 through 11, inclusive, Block 1, PARK MANOR, Anoka County, Minnesota.

Has caused the same to be surveyed and platted as PARK MANOR 2ND ADDITION and does hereby dedicate to the public for public use the public way and the drainage and utility easements as shown on this plat.

In witness whereof said Spring Lake Park Leased Housing Associates I, LLLP, a Minnesota limited liability limited partnership, has caused these presents to be signed by its proper officer this 13 day of September, 2017.

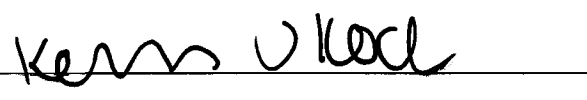
SPRING LAKE PARK LEASED HOUSING ASSOCIATES I, LLLP



Mark Moorhouse senior vice president

STATE OF Minnesota
COUNTY OF HENNEPIN

This instrument was acknowledged before me this 13th day of September, 2017 by Mark Moorhouse senior vice president of Spring Lake Park Leased Housing Associates I, LLLP, a Minnesota limited liability partnership, on behalf of the limited liability limited partnership.



Kerry J Koch

Notary Public Hennepin County, Minnesota
My Commission Expires January 31, 2022

SURVEYOR CERTIFICATE

I Max L. Stanislowski do hereby certify that this plat was prepared by me or under my direct supervision; that I am a duly Licensed Land Surveyor in the State of Minnesota; that this plat is a correct representation of the boundary survey; that all mathematical data and labels are correctly designated on this plat; that all monuments depicted on this plat have been, or will be correctly set within one year; that all water boundaries and wet lands, as defined in Minnesota Statutes, Section 505.01, Subd. 3, as of the date of this certificate are shown and labeled on this plat; and all public ways are shown and labeled on this plat.

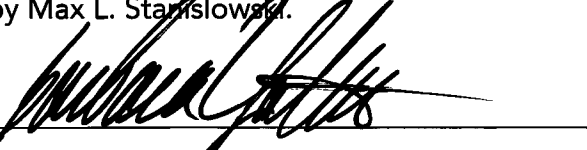
Dated this 12th day of SEPTEMBER, 2017.



Max L. Stanislowski, Licensed Land Surveyor
Minnesota License No. 48988

STATE OF MINNESOTA
COUNTY OF HENNEPIN

This instrument was acknowledged before me this 12th day of September, 2017 by Max L. Stanislowski.



Barbara Yotter

Notary Public Chisago County, Minnesota
My Commission Expires January 31, 2020

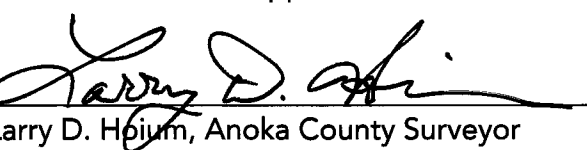
CITY COUNCIL, CITY OF SPRING LAKE PARK, MINNESOTA

This plat of PARK MANOR 2ND ADDITION was approved and accepted by the City Council of the City of Spring Lake Park, Minnesota at a regular meeting thereof held this 15th day of May, 2017, and said plat is in compliance with the provisions of Minnesota Statutes, Section 505.03, Subd. 2.

City Council, City of Spring Lake Park, Minnesota
By Sindy Hansen, Mayor By Carrie Bussinger, Clerk

COUNTY SURVEYOR

I hereby certify that in accordance with Minnesota Statutes, Section 505.021, Subd. 11, this plat has been reviewed and approved this 21st day of SEPTEMBER, 2017.



Larry D. Hjelm, Anoka County Surveyor

COUNTY AUDITOR/TREASURER

Pursuant to Minnesota Statutes, Section 505.021, Subd. 9, taxes payable in the year 2017 on the land hereinbefore described have been paid. Also, pursuant to Minnesota Statutes, Section 272.12, there are no delinquent taxes and transfer entered this 21 day of Sept., 2017.



Property Tax Administrator

By Becky Hanson, Deputy

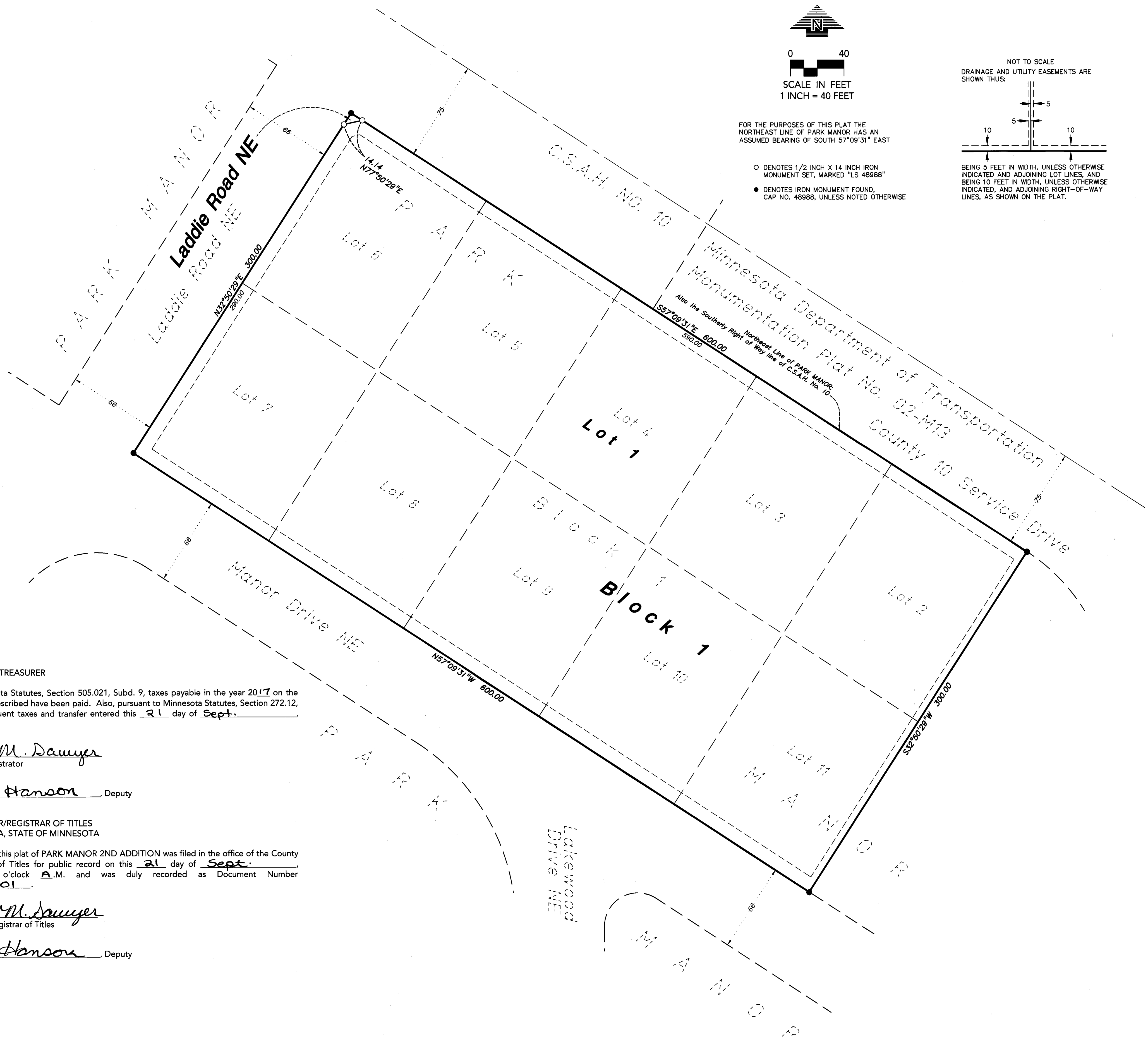
COUNTY RECORDER/REGISTRAR OF TITLES COUNTY OF ANOKA, STATE OF MINNESOTA

I hereby certify that this plat of PARK MANOR 2ND ADDITION was filed in the office of the County Recorder/Registrar of Titles for public record on this 21 day of Sept., 2017, at 11:20 o'clock A.M. and was duly recorded as Document Number 2181519.001.



County Recorder/Registrar of Titles

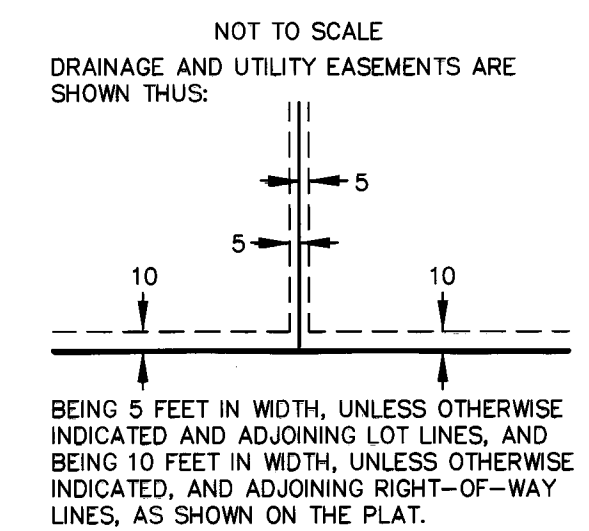
By Becky Hanson, Deputy



0 40
SCALE IN FEET
1 INCH = 40 FEET

FOR THE PURPOSES OF THIS PLAT THE NORTHEAST LINE OF PARK MANOR HAS AN ASSUMED BEARING OF SOUTH 57°09'31" EAST

- DENOTES 1/2 INCH X 14 INCH IRON MONUMENT SET, MARKED "LS 48988"
- DENOTES IRON MONUMENT FOUND, CAP NO. 48988, UNLESS NOTED OTHERWISE



\$ 56.00

