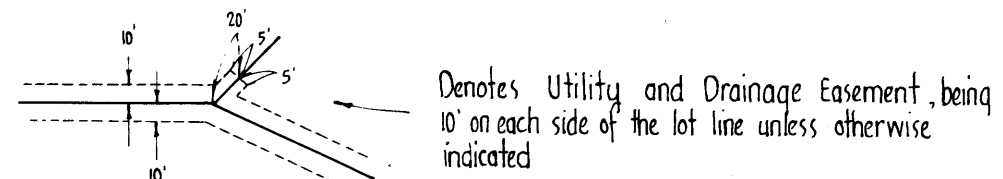


PARK RIVER ESTATES

— City of Coon Rapids — County of Anoka —

Suburban
Engineering, Inc.
Engineers - Surveyors

Scale 1"=100'
April, 1963
Bearings are assumed



NORTH



We hereby certify that the City Council of the City of Coon Rapids, Anoka County, Minnesota, duly accepted and approved the annexed plat of PARK RIVER ESTATES, at a regular meeting thereof held this 15 day of May A.D. 1963.

CITY OF COON RAPIDS, ANOKA COUNTY, MINNESOTA
By Joseph A. Craig Its Mayor
By Margaret Seefeld Its Clerk

The annexed plat of PARK RIVER ESTATES was approved by the Planning and Zoning Commission of the City of Coon Rapids at a regular meeting thereof held this 6 day of May A.D. 1963.

CITY OF COON RAPIDS, ANOKA COUNTY, MINNESOTA
By Rich E. Pease Its Chairman
By W. J. Moran Its Clerk

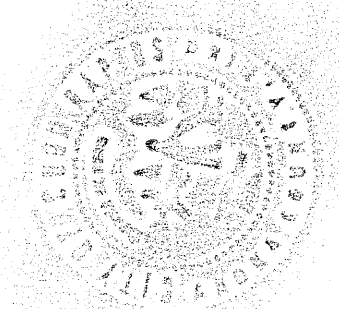
Checked and approved this 8th day of August A.D. 1963.

Ronald W. Anderson Anoka County Surveyor

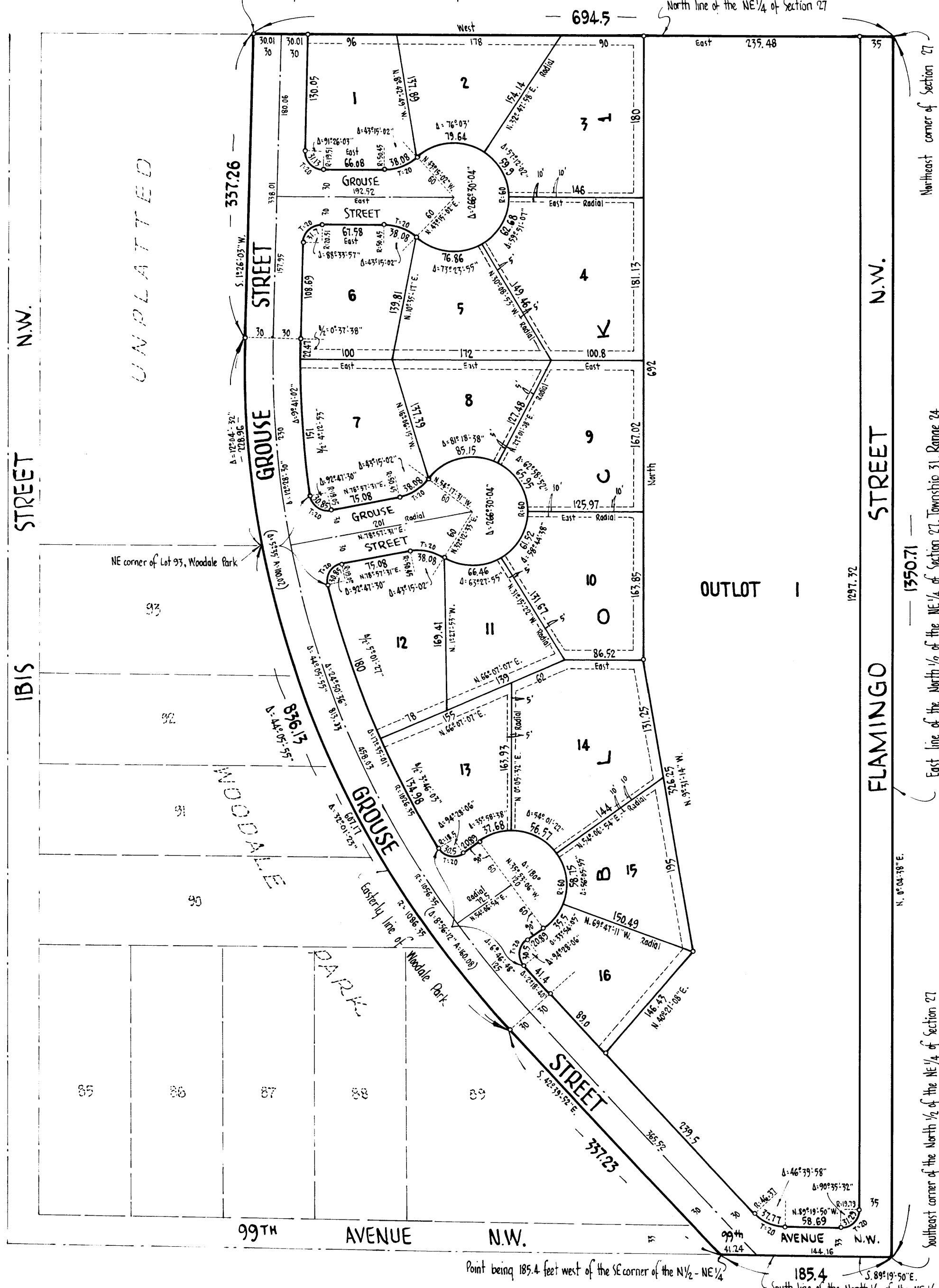
I HEREBY CERTIFY THAT TAXES FOR THE YEAR 1962
ON THE LANDS DESCRIBED WITHIN ARE PAID
Robert A. Peterson
County Treasurer

TAXES PAID

This 8th day of Aug 1963
Kenneth W. Campbell
Auditor, Anoka County, Minn.
W. Wayne A. Heald Deputy



REVISED ADDITOR'S SUBDIVISION # 75
Point being 694.5 feet west of the NE corner of Section 27



KNOW ALL MEN BY THESE PRESENTS: that Laura G. Dunn, widow, owner and proprietor of the following described property situate in the State of Minnesota, County of Anoka, to-wit: That part of the North 1/2 of the Northeast 1/4 of Section 27, Township 31, Range 24 lying Easterly of the following described line: Commencing at a point on the North line of Section 27, said point being 694.5 feet West of the Northeast corner of said Section 27 (the North line of said Section 27 has an assumed bearing of West 0°-00'); thence S. 1°-26'-03" W., a distance of 337.26 feet; thence South along a tangential curve to the left with a radius of 1086.35 feet a distance of 228.96 feet to the Northeast corner of Lot 93, Wooddale Park; thence continuing along the last described curve and along the Easterly line of Wooddale Park, a distance of 607.17 feet; thence S. 42°-39'-52" E. tangent to the last described curve a distance of 337.23 feet more or less to a point on the South line of the North 1/2 of the Northeast 1/4 and there terminating; said point being 185.4 feet West of the Southeast corner of the North 1/2 of the Northeast 1/4 of Section 27; has caused the same to be surveyed and platted as PARK RIVER ESTATES; and do hereby donate and dedicate to the public for public use forever the Avenue and Streets as shown on the annexed plat, subject to Utility and Drainage easements as shown on the annexed plat. In witness whereof said Laura G. Dunn, widow, has hereunto set her hand and seal this 15 day of MAY A.D. 1963.

In Presence of
Arthur W. McCauley As to Laura G. Dunn
Margaret Seefeld Laura G. Dunn

State of Minnesota On this 15 day of MAY A.D. 1963, before me, a Notary Public of Anoka County of Anoka Public personally appeared Laura G. Dunn, widow, to me known to be the person described in and who executed the foregoing instrument and she acknowledged that she executed the same as her own free act and deed.

ARTHUR W. MCCAULEY
Notary Public, Anoka County, Minn.
My Commission Expires Oct. 31, 1969

I hereby certify that I have surveyed and platted the property described on this plat as PARK RIVER ESTATES; that this plat is a correct representation of said survey; that all distances are correctly shown on the plat in feet and decimals of a foot; that the monuments for guidance of future surveys have been correctly placed in the ground as shown on the plat; that the outside boundary lines are correctly designated on the plat, and that there are no wet lands or public highways to be designated on said plat other than as shown thereon.

E. A. Rathbun
Surveyor - Minnesota Reg. No. 3795

State of Minnesota The surveyors certificate subscribed and sworn to before me, a County of Hennepin Notary Public, this 6th day of May A.D. 1963.

Warren O. Olson
Notary Public, Hennepin County, Minnesota
My Commission Expires _____

OFFICE OF REGISTER OF DEEDS
STATE OF MINNESOTA, COUNTY OF ANOKA
I hereby certify that the within instrument was filed in this office for record on the 15 day of Aug 1963 A.D. 1963 at 1:15 o'clock P.M., and was duly recorded in book 9 of Plats page 11
Gertrude Skovier
Register of Deeds
By Margaret Russell Deputy