

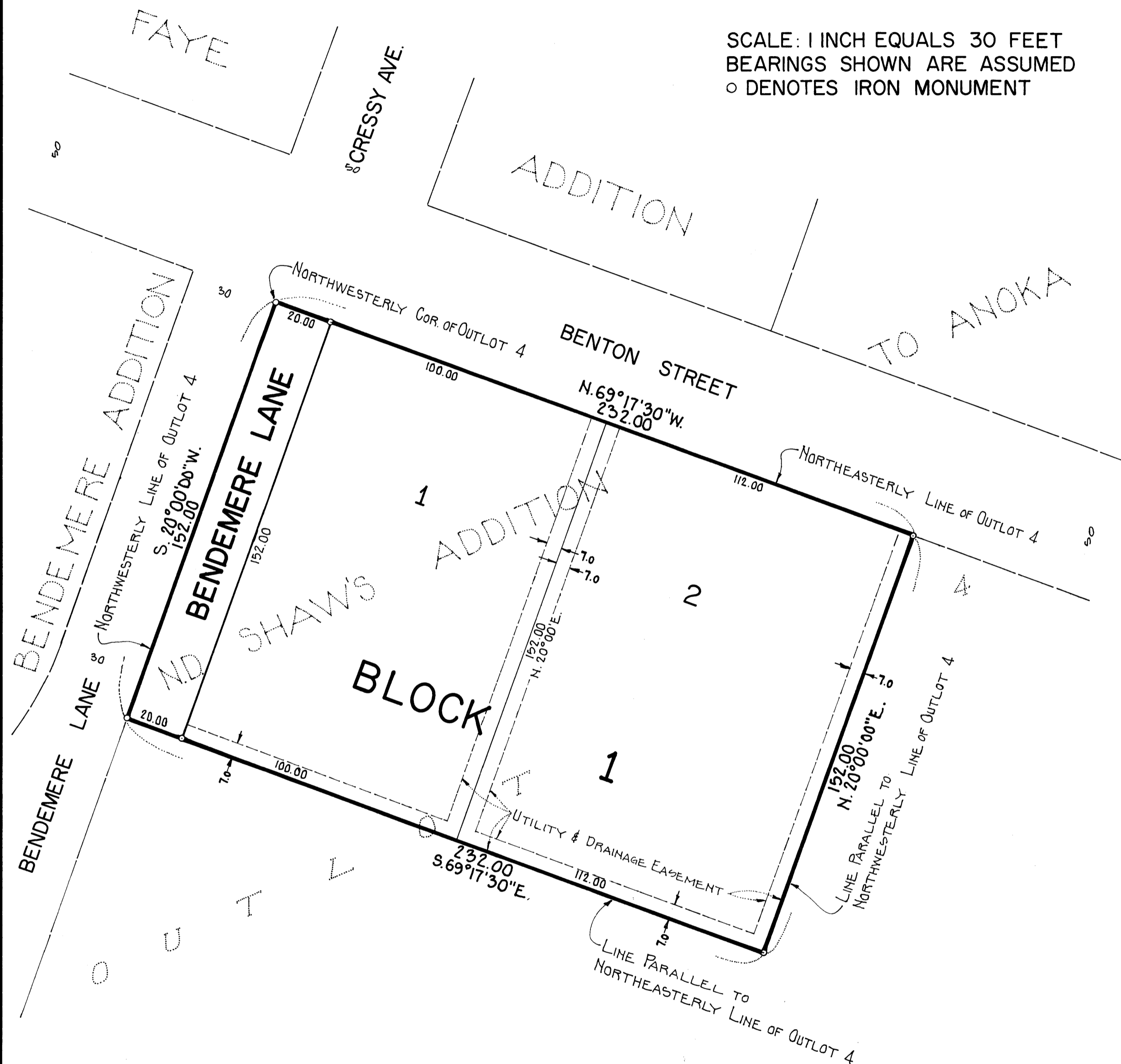
# PARKIN ADDITION

AUGUST, 1973

EGAN, FIELD & NOWAK, INC.  
SURVEYORS

CITY OF ANOKA

SCALE: 1 INCH EQUALS 30 FEET  
BEARINGS SHOWN ARE ASSUMED  
○ DENOTES IRON MONUMENT



Know all men by these presents that Donald L. Parkin, Jr. and Gwendolyn K. Parkin, his wife, owners and proprietors of the following described property situated in the State of Minnesota and County of Anoka, to wit: That part of Outlot 4, N. D. Shaw's Addition to Anoka, described as follows: Beginning at the Northwestern corner of said Outlot 4; thence Southwesterly along the Northwestern line of said Outlot 4 a distance of 152 feet; thence Southeasterly parallel to the Northeasterly line of said Outlot 4 a distance of 232 feet; thence Northeasterly parallel to the Northwestern line of said Outlot 4 to the Northeasterly line of said Outlot 4; thence Northwesterly along said Northeasterly line of Outlot 4 to the point of beginning, have caused the same to be surveyed and platted as PARKIN ADDITION and do hereby donate and dedicate to the public for public use forever the lane and easements for utility and drainage purposes as shown on the plat. In witness whereof said Donald L. Parkin, Jr. and Gwendolyn K. Parkin, his wife, have hereunto set their hands and seals this 13 day of August A. D. 1973.

Signed:  
*Donald L. Parkin Jr.* (Seal)  
 Donald L. Parkin, Jr.  
*Gwendolyn K. Parkin* (Seal)  
 Gwendolyn K. Parkin

STATE OF MINNESOTA  
 COUNTY OF Hennepin S. S. On this 13 day of August A. D. 1973, before me, a Notary Public, personally appeared Donald L. Parkin, Jr. and Gwendolyn K. Parkin, his wife, to me known to be the persons described in and who executed the foregoing instrument and they acknowledged that they executed the same as their own free act and deed.

*John R. McChesney*  
 Notary Public, Hennepin County, Minnesota  
 My commission expires June 12, 1974  
JOHN R. MCCHESNEY NOTARY PUBLIC  
 Hennepin County, Minnesota  
 My commission expires June 12, 1974

I hereby certify that I have surveyed and platted the property described on this plat as PARKIN ADDITION; that this plat is a correct representation of said survey; that all distances are correctly shown on the plat in feet and decimals of a foot; that all monuments have been correctly placed in the ground as shown; that the outside boundary lines are correctly designated on the plat and that there are no wet lands or public highways to be designated on said plat other than as shown thereon.

*Vernon A. Nickels*  
 Surveyor - Minnesota Registration No. 9053

STATE OF MINNESOTA  
 COUNTY OF HENNEPIN) S. S. The surveyor's certificate was subscribed and sworn to before me, a Notary Public, this 10<sup>th</sup> day of August A. D. 1973.

*Chris Kuntz*  
 CHRIS KUNTZ,  
 Notary Public, Hennepin County, Minnesota  
 My commission expires March 4, 1975.

Approved by the Planning Commission of the City of Anoka, Minnesota, this 10<sup>th</sup> day of September A. D. 1973.

PLANNING COMMISSION OF THE CITY OF ANOKA, MINNESOTA  
 signed *Gregory T. Tolson* chairman  
 attest *Marilyn E. Watson* secretary

We hereby certify that the City Council of the City of Anoka, Anoka County, Minnesota, duly accepted and approved the annexed plat of PARKIN ADDITION at a regular meeting thereof held this 17<sup>th</sup> day of September A. D. 1973.

CITY COUNCIL OF THE CITY OF ANOKA, MINNESOTA  
 by *David B. Stewart* mayor  
 by *Sheila Jensen* clerk

Checked and approved this 2nd day of April A. D. 1974.  
*Roland W. Anderson*  
 Roland W. Anderson --- Anoka County Surveyor

"NO DELINQUENT TAXES  
 AND TRANSFER ENCL. 10"  
April 2, 1974  
*Charles H. Lofgren*  
 Auditor, Anoka County  
 BY *Nancy C. Anapou*  
 Deputy

407011  
 OFFICE OF REGISTER OF DEEDS  
 STATE OF MINNESOTA, COUNTY OF ANOKA }  
 I hereby certify that the within instrument was filed in this office for record on the 17<sup>th</sup> day of September A. D. 1973 at 2:20 o'clock P.M., and was duly recorded in book 159 of Plats - page 15.  
*Ted J. Conrad*  
 Register of Deeds  
 By *Margaret Russell* Deputy