

PARKSIDE AT ANDOVER STATION 2ND ADDITION

City of Andover
County of Anoka
Sec. 34, Twp. 32, Rge. 24

Bk 20 Torn Pg 39

KNOW ALL PERSONS BY THESE PRESENTS: That Bruggeman Properties LLC, a Minnesota Limited Liability Company, fee owner of the following described property situated in the County of Anoka, State of Minnesota, to-wit:

Lot 4, Block 1, ANDOVER STATION NORTH, according to the recorded plat thereof, Anoka County, Minnesota,

AND

Outlots A and B, PARKSIDE AT ANDOVER STATION, according to the recorded plat thereof, Anoka County, Minnesota,

Has caused the same to be surveyed and platted as PARKSIDE AT ANDOVER STATION 2ND ADDITION and does hereby donate and dedicate to the public for public use forever the avenues, streets, and drainage and utility easements as shown on the plat. In witness whereof said Bruggeman Properties LLC, has caused these presents to be signed by its proper officer this 26th day of OCTOBER, 2006

BRUGGEMAN PROPERTIES LLC

Paul Bruggeman
Paul Bruggeman, President

STATE OF MINNESOTA) The foregoing instrument was acknowledged before me this 26th day of OCTOBER, 2006, by Paul Bruggeman, as COUNTY OF RANDOLPH President of Bruggeman Properties LLC, a Minnesota Limited Liability Company, on behalf of the Company.

Gregory William Schlink
GREGORY WILLIAM SCHLINK
NOTARY PUBLIC-MINNESOTA
My Commission Expires Jan. 31, 2009

Gregory William Schlink
Notary Public, Anoka County, Minnesota
My Commission expires 1/31/09

I hereby certify that I have surveyed and platted the land described on this plat as PARKSIDE AT ANDOVER STATION 2ND ADDITION; that this plat is a correct representation of said survey; that all distances are correctly shown on said plat in feet and hundredths of a foot; that all monuments have been correctly placed in the ground as shown, or shall be correctly placed in the ground within one year after the recording date of this plat; that the outside boundaries are correctly designated on said plat; and that there are no wetlands, in accordance with M.S. 505.02 Subdivision 1, or public highways to be designated on said plat other than as shown thereon.

Lyle C. Reynolds
Lyle C. Reynolds, Registered Land Surveyor
Minnesota License No. 13072

STATE OF MINNESOTA) The surveyors certificate was acknowledged before me a Notary Public, this 25th day of October, 2006, by Lyle COUNTY OF ANOKA C. Reynolds, Land Surveyor.

Jill M. Kent
JILL M. KENT
NOTARY PUBLIC-MINNESOTA
My Commission Expires Jan. 31, 2010

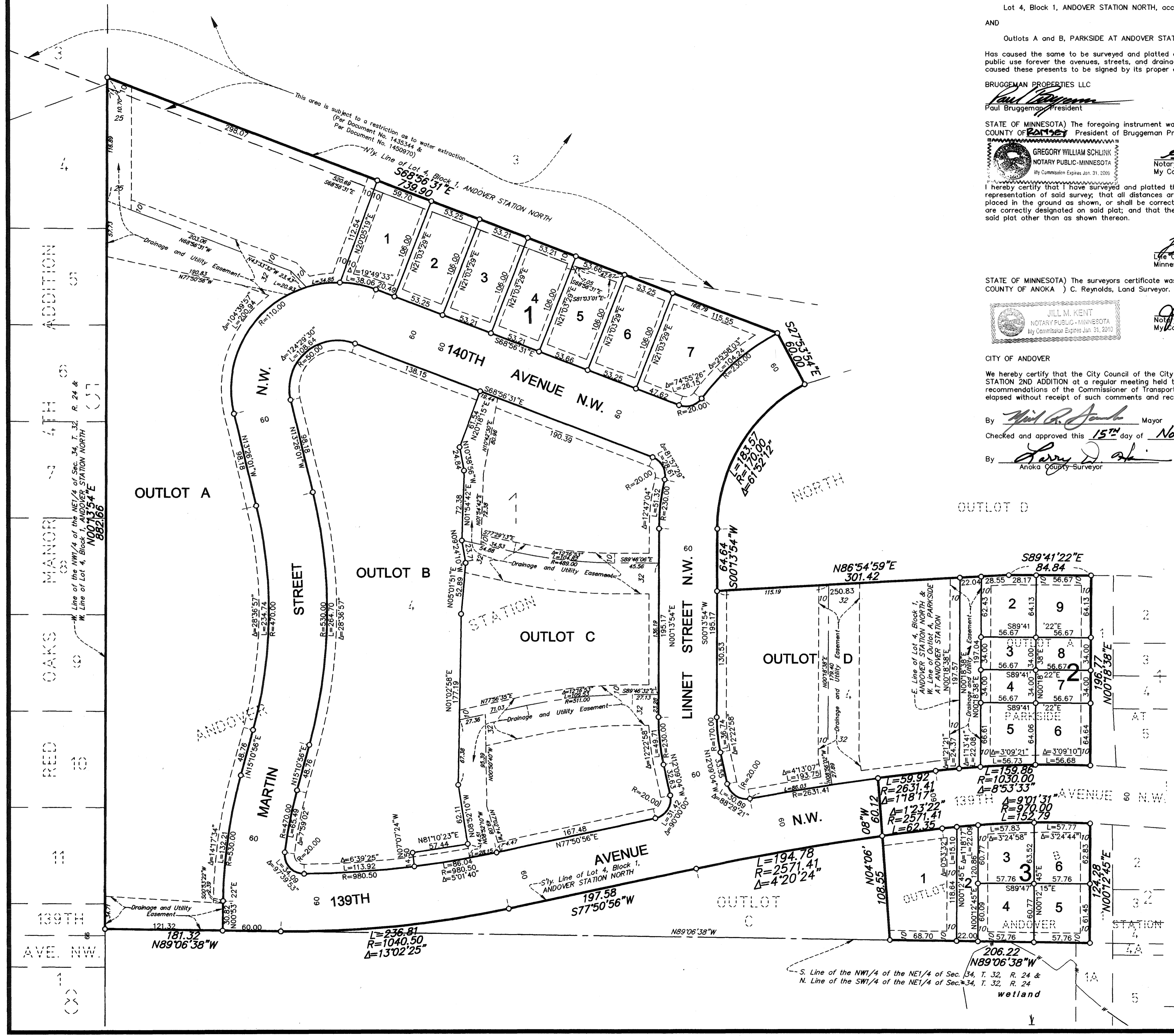
Jill M. Kent
Notary Public, Anoka County, Minnesota
My Commission expires 01-31-10

CITY OF ANDOVER

We hereby certify that the City Council of the City of Andover, Anoka County, Minnesota, duly accepted and approved the plat of PARKSIDE AT ANDOVER STATION 2ND ADDITION at a regular meeting held this 5th day of September, 2006. If applicable, the written comments and recommendations of the Commissioner of Transportation and the County Highway Engineer have been received by the city, or the prescribed 30 day period has elapsed without receipt of such comments and recommendations, as provided by Minn. Statutes, Section 505.03, Subd. 2.

By *Neil R. Jacobs* Mayor By *Debra Hill* Clerk
Checked and approved this 15th day of NOVEMBER, 2006.

By *Larry D. Shi*
Anoka County Surveyor

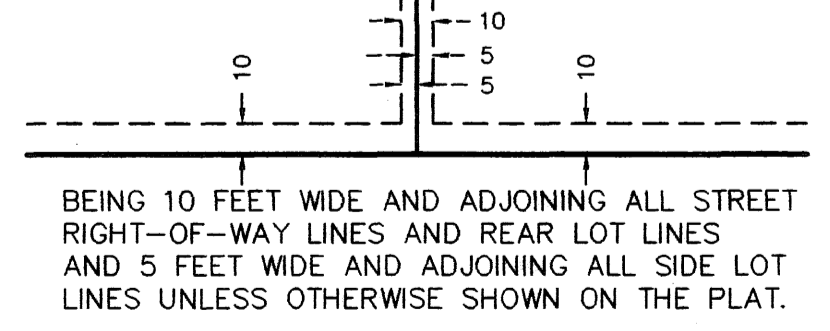


489726.001
Office of Registrar of Titles
STATE OF MINNESOTA
COUNTY OF ANOKA
I hereby certify that the within instrument was
filed in this office on 11-15-06
at 4:09 o'clock P. M.
By *GKE*
Deputy Registrar of Titles

I HEREBY CERTIFY THAT THE CURRENT AND
DELINQUENT TAXES ON THE LANDS DESCRIBED
WITHIN ARE PAID AND THE TRANSFER IS
ENTERED November 15, 2006
LAUREN J DEVINE
PROPERTY TAX ADMINISTRATOR
BY *Stige*
DEPUTY PROPERTY TAX ADMINISTRATOR

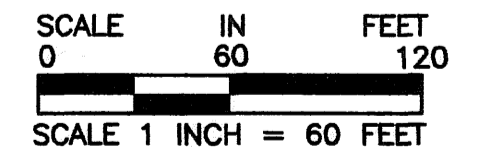
Note: For the purposes of this plat, the north line of the Southwest Quarter of the Northeast Quarter of Section 34, Township 32, Range 24, Anoka County, Minnesota, is assumed to bear N89°06'38"W.

DRAINAGE AND UTILITY EASEMENTS SHOWN THUS:



BEING 10 FEET WIDE AND ADJOINING ALL STREET RIGHT-OF-WAY LINES AND REAR LOT LINES AND 5 FEET WIDE AND ADJOINING ALL SIDE LOT LINES UNLESS OTHERWISE SHOWN ON THE PLAT.

- DENOTES FOUND MONUMENT.
- DENOTES A MONUMENT REQUIRED BY MINNESOTA STATE STATUTE WHICH WILL BE SET WITHIN ONE YEAR OF THE RECORDING DATE OF THIS PLAT, AND SHALL BE EVIDENCED BY A 1/2" INCH BY 14 INCH IRON PIPE MARKED BY RLS 12251.
- DENOTES EDGE OF WETLAND



SCALE 1 INCH = 60 FEET

