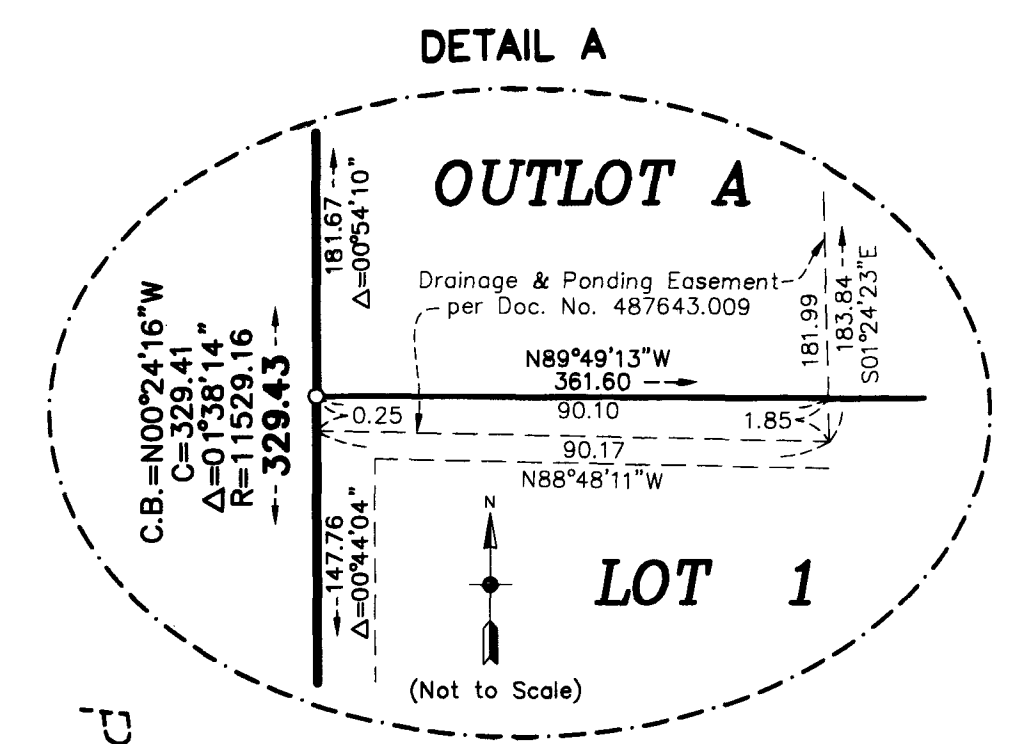
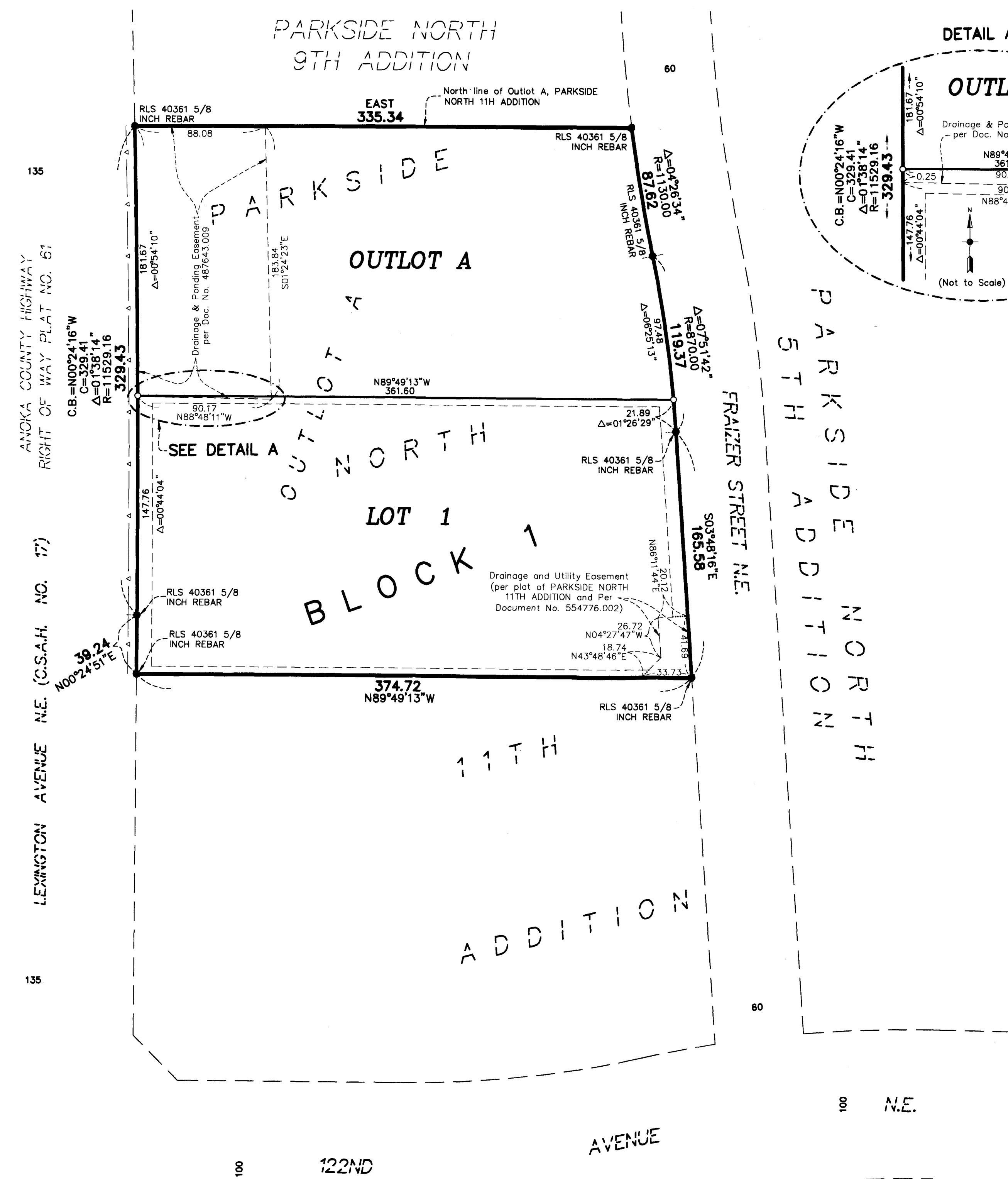


PARKSIDE NORTH 12TH ADDITION



KNOW ALL PERSONS BY THESE PRESENTS: That Paxmar Property, LLC, a Minnesota limited liability company, owner of the following described property:

Outlot A, PARKSIDE NORTH 11TH ADDITION, according to the recorded plat thereof, Anoka County, Minnesota

Has caused the same to be surveyed and platted as PARKSIDE NORTH 12TH ADDITION and does hereby dedicate to the public for public use the drainage and utility easements as created by this plat.

In witness whereof said Paxmar Property, LLC, a Minnesota limited liability company, has caused these presents to be signed by its proper officer this 10th day of December, 2018.

PAXMAR PROPERTY, LLC
Kent A. Roessler
Kent A. Roessler, Chief Manager

STATE OF MINNESOTA
COUNTY OF Anoka
This instrument was acknowledged before me on December 10, 2018 by Kent A. Roessler, Chief Manager of Paxmar Property, LLC, a Minnesota limited liability company.

Opree Meschill
Jacee A. Geschwill
Notary Public, Anoka County, Minnesota
My commission expires January 31, 2023

I Thomas R. Balluff do hereby certify that this plat was prepared by me or under my direct supervision; that I am a duly Licensed Land Surveyor in the State of Minnesota; that this plat is a correct representation of the boundary survey; that all mathematical data and labels are correctly designated on this plat; that all monuments depicted on this plat have been, or will be correctly set within one year; that all water boundaries and wet lands, as defined in Minnesota Statutes, Section 505.01, Subd. 3, as of the date of this certificate are shown and labeled on this plat; and all public ways are shown and labeled on this plat.

Dated this 28th day of NOVEMBER, 2018.

Thomas R. Balluff
Thomas R. Balluff, Licensed Land Surveyor
Minnesota License No. 40361

STATE OF MINNESOTA
COUNTY OF Anoka
This instrument was acknowledged before me on November 28th, 2018 by Thomas R. Balluff.

Cynthia J. Merial
Cynthia J. Merial
Notary Public, Hennepin County, Minnesota
My commission expires January 31, 2020

CITY COUNCIL, CITY OF BLAINE, MINNESOTA
This plat of PARKSIDE NORTH 12TH ADDITION was approved and accepted by the City Council of the City of Blaine, Minnesota at a regular meeting thereof held this 6th day of September, 2018, and said plat is in compliance with the provisions of Minnesota Statutes, Section 505.03, Subd. 2.

CITY COUNCIL, CITY OF BLAINE, MINNESOTA
By: *Tom Ryan* Mayor
By: *John Fack* Clerk

COUNTY SURVEYOR
I hereby certify that in accordance with Minnesota Statutes, Section 505.021, Subd. 11, this plat has been reviewed and approved this 13th day of December, 2018.

By: *Charles F. Gitzen*
Charles F. Gitzen, Anoka County Surveyor

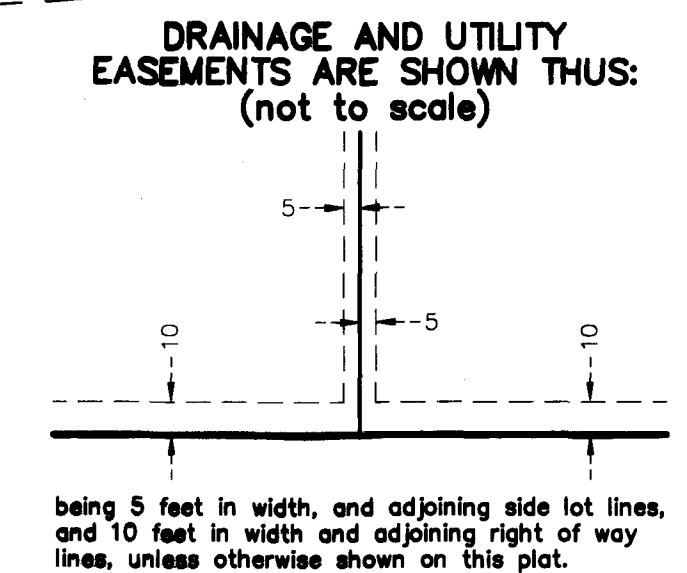
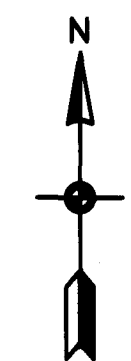
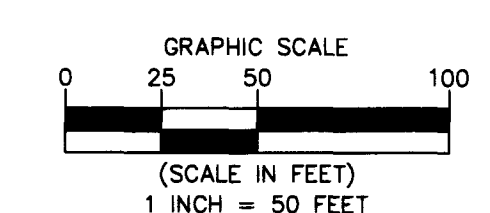
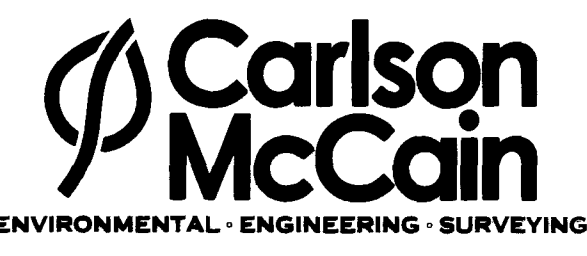
COUNTY AUDITOR/TREASURER
Pursuant to Minnesota Statutes, Section 505.021, Subd. 9, taxes payable in the year 2018 on the land hereinbefore described have been paid. Also, pursuant to Minnesota Statutes, Section 272.12, there are no delinquent taxes and transfer entered this 13th day of December, 2018.

Opnell M. Sawyer
Opnell M. Sawyer, Property Tax Administrator
By: *Spichalsky* Deputy

COUNTY RECORDER/REGISTRAR OF TITLES
County of Anoka, State of Minnesota
I hereby certify that this plat of PARKSIDE NORTH 12TH ADDITION was filed in the office of the County Recorder/Registrar of Titles for public record on this 13th day of December, 2018, at 2:05 o'clock P.M. and was duly recorded as Document Number 561765.002

Opnell M. Sawyer
Opnell M. Sawyer, County Recorder/Registrar of Titles
By: *Spichalsky* Deputy

\$56.00



- Denotes 5/8 inch by 14 inch rebar set or to be set within one year of recording of this plat and marked with license number 40361
- Denotes Found Iron Monument as noted
- ▲— Denotes Right of Access dedicated to Anoka County per the Plat of PARKSIDE NORTH

being 5 feet in width, and adjoining side lot lines, and 10 feet in width and adjoining right of way lines, unless otherwise shown on this plat.