

PARKSIDE NORTH 4TH ADDITION

CITY OF BLAINE
COUNTY OF ANOKA
SEC. 12, TWP. 31, RGE. 23
Book 22 Jorns Page 32

KNOW ALL PERSONS BY THESE PRESENTS: That Parkside North, LLC, a Minnesota limited liability company, owner of the following described property:

Outlot D, PARKSIDE NORTH 2ND ADDITION, according to the recorded plat thereof, Anoka County, Minnesota.

Has caused the same to be surveyed and platted as PARKSIDE NORTH 4TH ADDITION and does hereby dedicate to the public for public use the public way and the drainage and utility easements as created by this plat.

In witness whereof said Parkside North, LLC, a Minnesota limited liability company, has caused these presents to be signed by its proper officer this 18th day of April, 2016.

PARKSIDE NORTH, LLC

Kent A. Roessler
Kent A. Roessler, Chief Manager

STATE OF MINNESOTA
COUNTY OF ANOKA

This instrument was acknowledged before me on 4-18-16 by Kent A. Roessler, Chief Manager of Parkside North, LLC, a Minnesota limited liability company.

Pamela A. Broucek
PAMELA A BROUCEK
Notary Public, HENNEPIN COUNTY MN
My commission expires 1-31-2020

I Thomas R. Balluff do hereby certify that this plat was prepared by me or under my direct supervision; that I am a duly Licensed Land Surveyor in the State of Minnesota; that this plat is a correct representation of the boundary survey; that all mathematical data and labels are correctly designated on this plat; that all monuments depicted on this plat have been, or will be correctly set within one year; that all water boundaries and wet lands, as defined in Minnesota Statutes, Section 505.01, Subd. 3, as of the date of this certificate are shown and labeled on this plat; and all public ways are shown and labeled on this plat.

Dated this 15th day of APRIL, 2016.

Thomas R. Balluff
Thomas R. Balluff, Licensed Land Surveyor
Minnesota License No. 40361

STATE OF Minnesota
COUNTY OF Anoka

This instrument was acknowledged before me on April 15th, 2016 by Thomas R. Balluff.

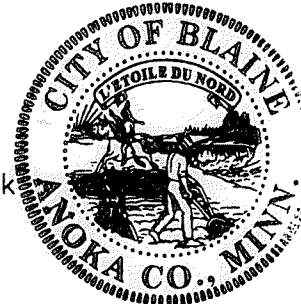
Cynthia J. Morical
Cynthia J. Morical
Notary Public, Hennepin County, MN
My commission expires Jan 31, 2020

CITY COUNCIL, CITY OF BLAINE, MINNESOTA

This plat of PARKSIDE NORTH 4TH ADDITION was approved and accepted by the City Council of the City of Blaine, Minnesota at a regular meeting thereof held this 21st day of April, 2016, and said plat is in compliance with the provisions of Minnesota Statutes, Section 505.03, Subd. 2.

CITY COUNCIL, CITY OF BLAINE, MINNESOTA

By: *Janey* Mayor By: *Collins* Clerk



COUNTY SURVEYOR

I hereby certify that in accordance with Minnesota Statutes, Section 505.021, Subd. 11, this plat has been reviewed and approved this 18th day of MAY, 2016.

By: *Larry D. Helm*
Larry D. Helm, Anoka County Surveyor

COUNTY AUDITOR/TREASURER

Pursuant to Minnesota Statutes, Section 505.021, Subd. 9, taxes payable in the year 2016 on the land hereinbefore described have been paid. Also, pursuant to Minnesota Statutes, Section 272.12, there are no delinquent taxes and transfer entered this 18th day of May, 2016.

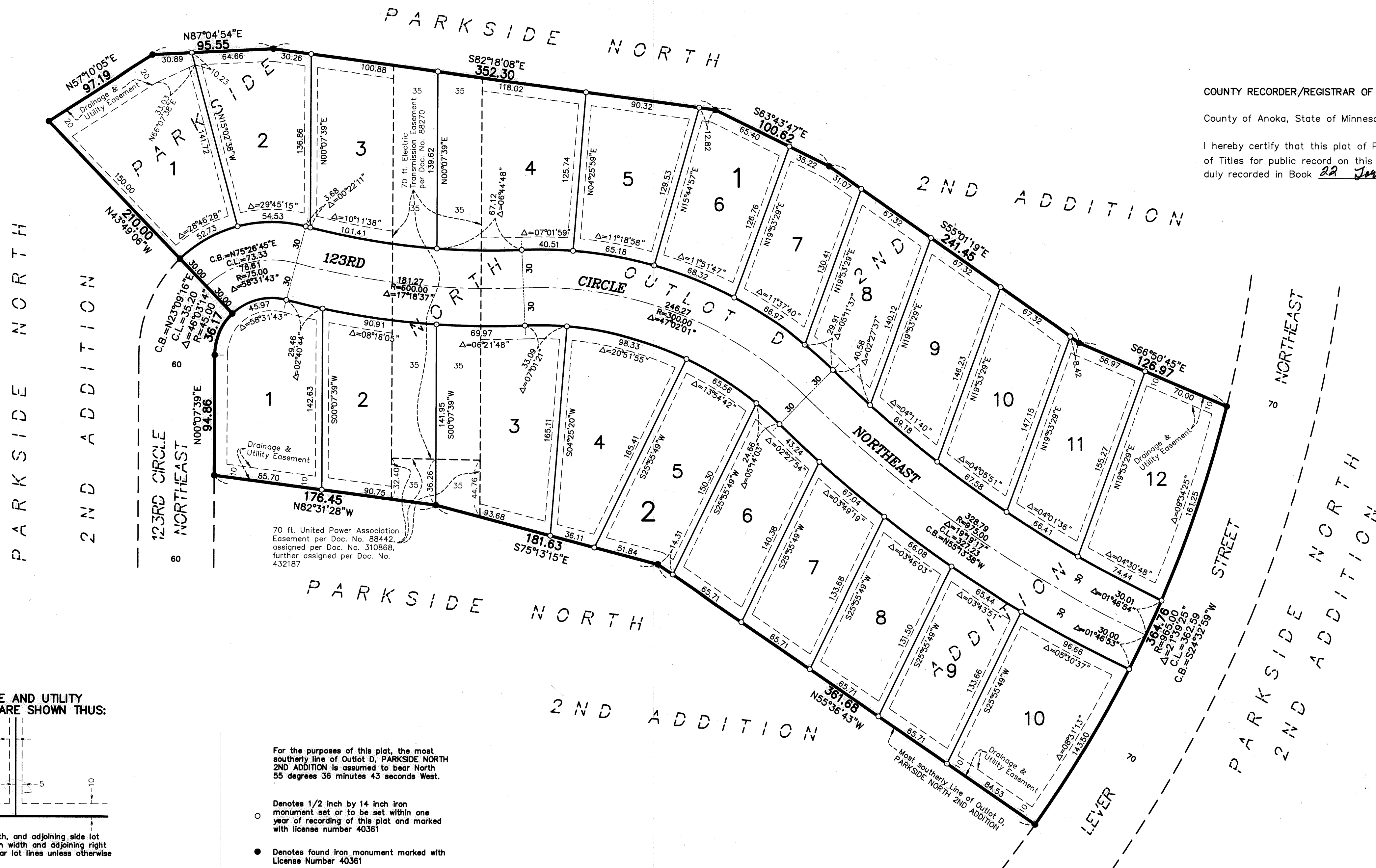
Janell M. Sawyer
Janell M. Sawyer, Deputy
Property Tax Administrator
By: *J. Patterson* Deputy

COUNTY RECORDER/REGISTRAR OF TITLES

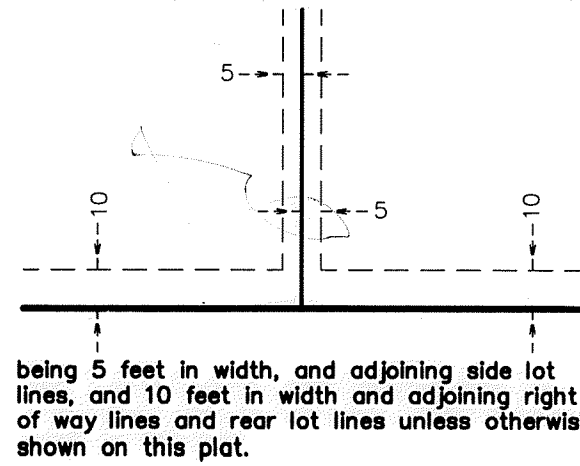
County of Anoka, State of Minnesota

I hereby certify that this plat of PARKSIDE NORTH 4TH ADDITION was filed in the office of the County Recorder/Registrar of Titles for public record on this 18th day of May, 2016, at 12:11 o'clock P.M. and was duly recorded in Book 22 Jorns Page 32, as Document Number 538909.002.

Janell M. Sawyer
Janell M. Sawyer, Deputy
County Recorder/Registrar of Titles
By: *J. Patterson* Deputy

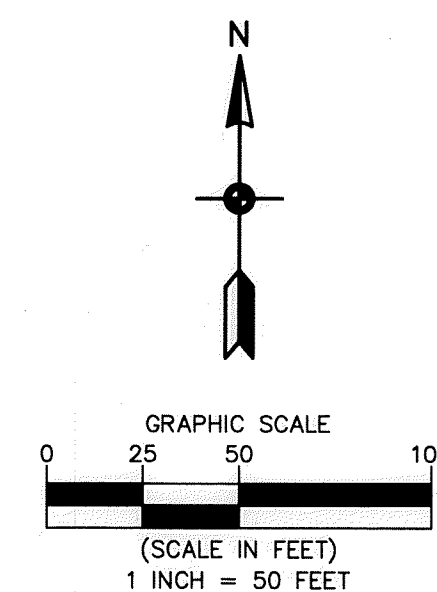


DRAINAGE AND UTILITY EASEMENTS ARE SHOWN THUS:



For the purposes of this plat, the most southerly line of Outlot D, PARKSIDE NORTH 2ND ADDITION is assumed to bear North 55 degrees 36 minutes 43 seconds West.

- Denotes 1/2 inch by 14 inch iron monument set or to be set within one year of recording of this plat and marked with license number 40361
- Denotes found iron monument marked with License Number 40361



\$56.00

Carlson McCain
ENVIRONMENTAL • ENGINEERING • SURVEYING