

PARKSIDE NORTH 5TH ADDITION

CITY OF BLAINE
COUNTY OF ANOKA
SEC. 12, TWP. 31, RGE. 23

KNOW ALL PERSONS BY THESE PRESENTS: That Parkside North, LLC, a Minnesota limited liability company, owner of the following described property:

Outlot A, PARKSIDE NORTH, according to the recorded plat thereof, Anoka County, Minnesota

Book 22 Town Page 31

Has caused the same to be surveyed and platted as PARKSIDE NORTH 5TH ADDITION and does hereby dedicate to the public for public use the public way and the drainage and utility easements as created by this plat.

In witness whereof said Parkside North, LLC, a Minnesota limited liability company, has caused these presents to be signed by its proper officer this 11th day of MAY 2016.

PARKSIDE NORTH, LLC

Kent A. Roessler
Kent A. Roessler, Chief Manager

STATE OF MINNESOTA
COUNTY OF ANOKA

This instrument was acknowledged before me on MAY 11th 2016 by Kent A. Roessler, Chief Manager of Parkside North, LLC, a Minnesota limited liability company.

Pamela A. Broucek
PAMELA A. BROUCEK
Notary Public, HENNEPIN COUNTY
My commission expires 1-31-2020

I, Thomas R. Balluff do hereby certify that this plat was prepared by me or under my direct supervision; that I am a duly Licensed Land Surveyor in the State of Minnesota; that this plat is a correct representation of the boundary survey; that all mathematical data and labels are correctly designated on this plat; that all monuments depicted on this plat have been, or will be correctly set within one year; that all water boundaries and wet lands, as defined in Minnesota Statutes, Section 505.01, Subd. 3, as of the date of this certificate are shown and labeled on this plat; and all public ways are shown and labeled on this plat.

Dated this 11th day of MAY, 2016.

Thomas R. Balluff
Thomas R. Balluff, Licensed Land Surveyor
Minnesota License No. 40361

STATE OF Minnesota
COUNTY OF Anoka

This instrument was acknowledged before me on May 11th, 2016 by Thomas R. Balluff.

Cynthia J. Morica
Cynthia J. Morica
Notary Public, Hennepin County, MN
My commission expires Jan. 31, 2020

CITY COUNCIL, CITY OF BLAINE, MINNESOTA

This plat of PARKSIDE NORTH 5TH ADDITION was approved and accepted by the City Council of the City of Blaine, Minnesota at a regular meeting thereof held this 1st day of April, 2016, and said plat is in compliance with the provisions of Minnesota Statutes, Section 505.03, Subd. 2.

CITY COUNCIL, CITY OF BLAINE, MINNESOTA

By: *Mayor* Mayor

By: *Clerk* Clerk



COUNTY SURVEYOR

I hereby certify that in accordance with Minnesota Statutes, Section 505.021, Subd. 11, this plat has been reviewed and approved this 18th day of May, 2016.

By: *Larry D. Kolum*
Larry D. Kolum, Anoka County Surveyor

COUNTY AUDITOR/TREASURER

Pursuant to Minnesota Statutes, Section 505.021, Subd. 9, taxes payable in the year 2016 on the land herebefore described have been paid. Also, pursuant to Minnesota Statutes, Section 272.12, there are no delinquent taxes and transfer entered this 18th day of May, 2016.

Janell M. Sawyer
Janell M. Sawyer, Deputy
Property Tax Administrator

COUNTY RECORDER/REGISTRAR OF TITLES

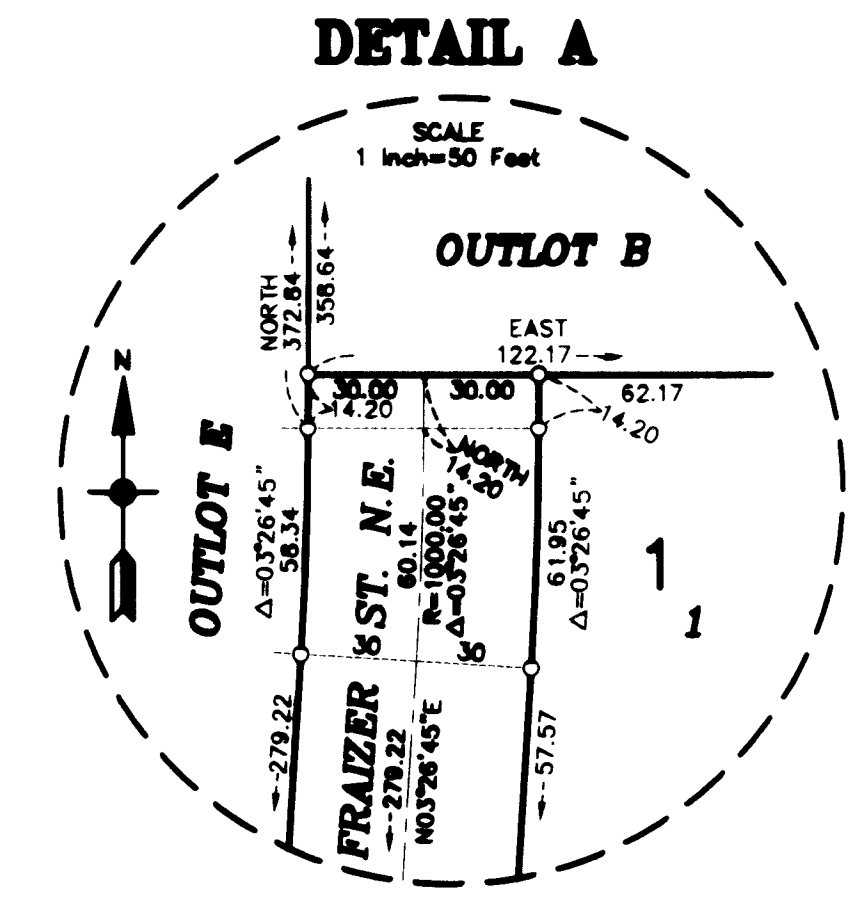
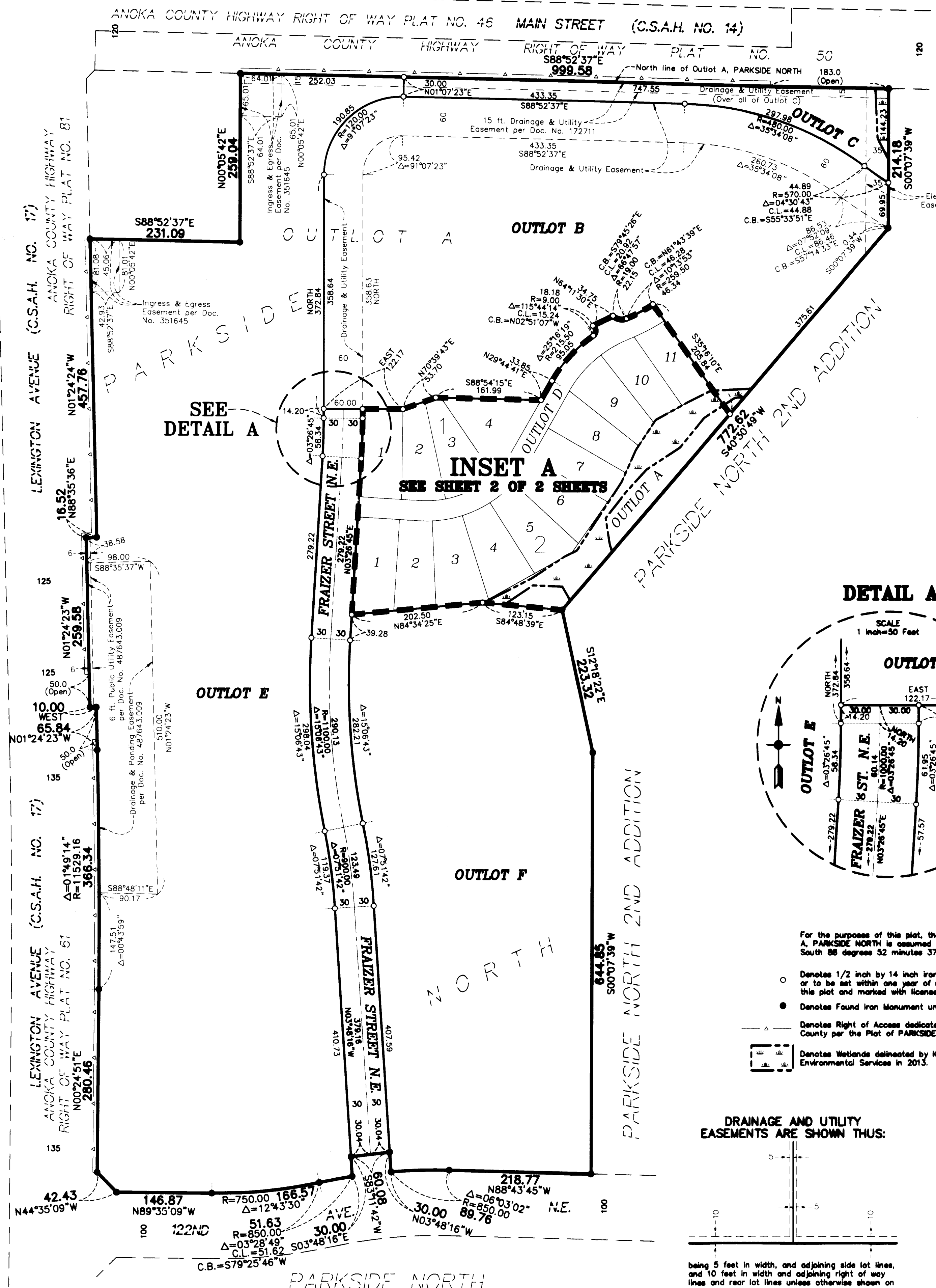
County of Anoka, State of Minnesota

I hereby certify that this plat of PARKSIDE NORTH 5TH ADDITION was filed in the office of the County Recorder/Registrar of Titles for public record on this 18th day of May, 2016 at 11:00 o'clock A.M. and was duly recorded in Book 22 TOWNS Page 31 as Document Number 538802000.

Janell M. Sawyer
Janell M. Sawyer, Deputy
County Recorder/Registrar of Titles

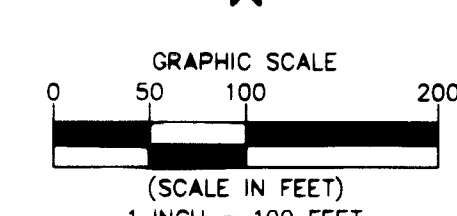
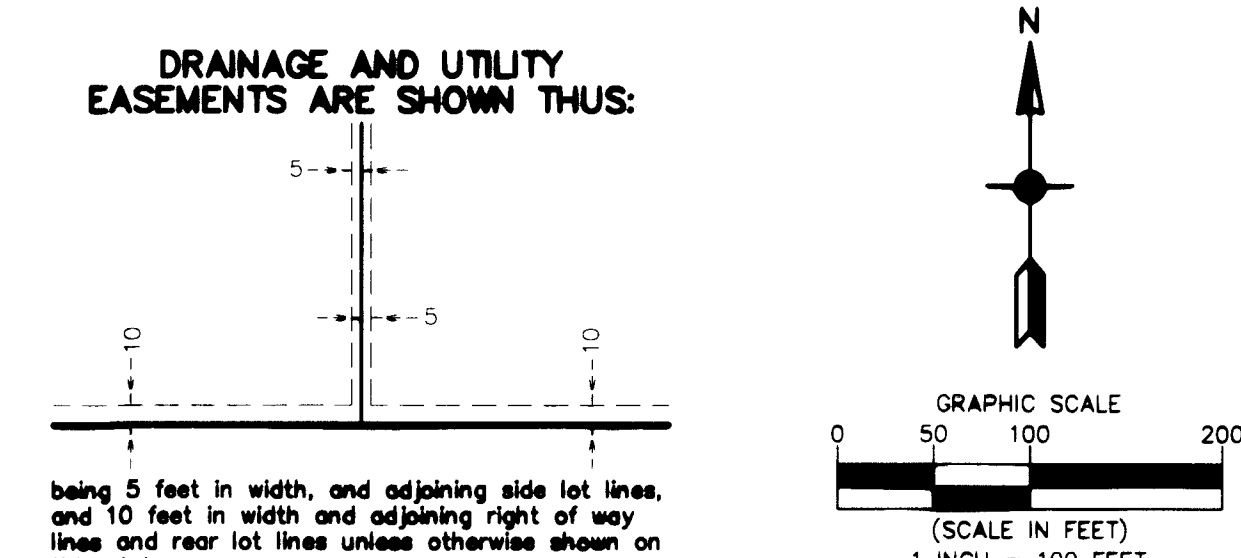
By: *Deputy* Deputy

\$5600



For the purposes of this plat, the North line of Outlot A, PARKSIDE NORTH is assumed to have a bearing of South 88 degrees 52 minutes 37 seconds East.

- Denotes 1/2 inch by 14 inch iron monument set or to be set within one year of recording of this plat and marked with license number 40361
- Denotes Found Iron Monument unless otherwise noted
- △ Denotes Right of Access dedicated to Anoka County per the Plat of PARKSIDE NORTH
- ▭ Denotes Wetlands delineated by Kjelhaug Environmental Services in 2013.

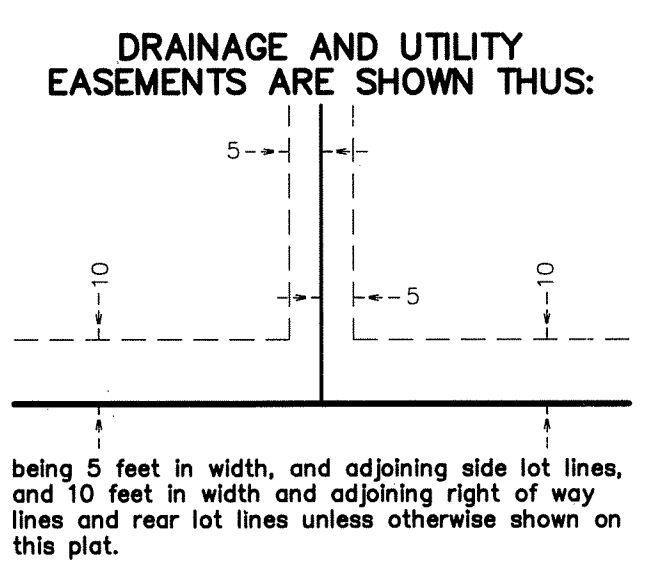
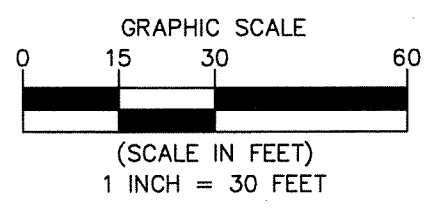
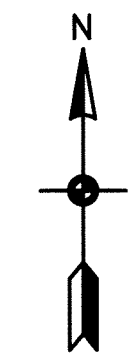
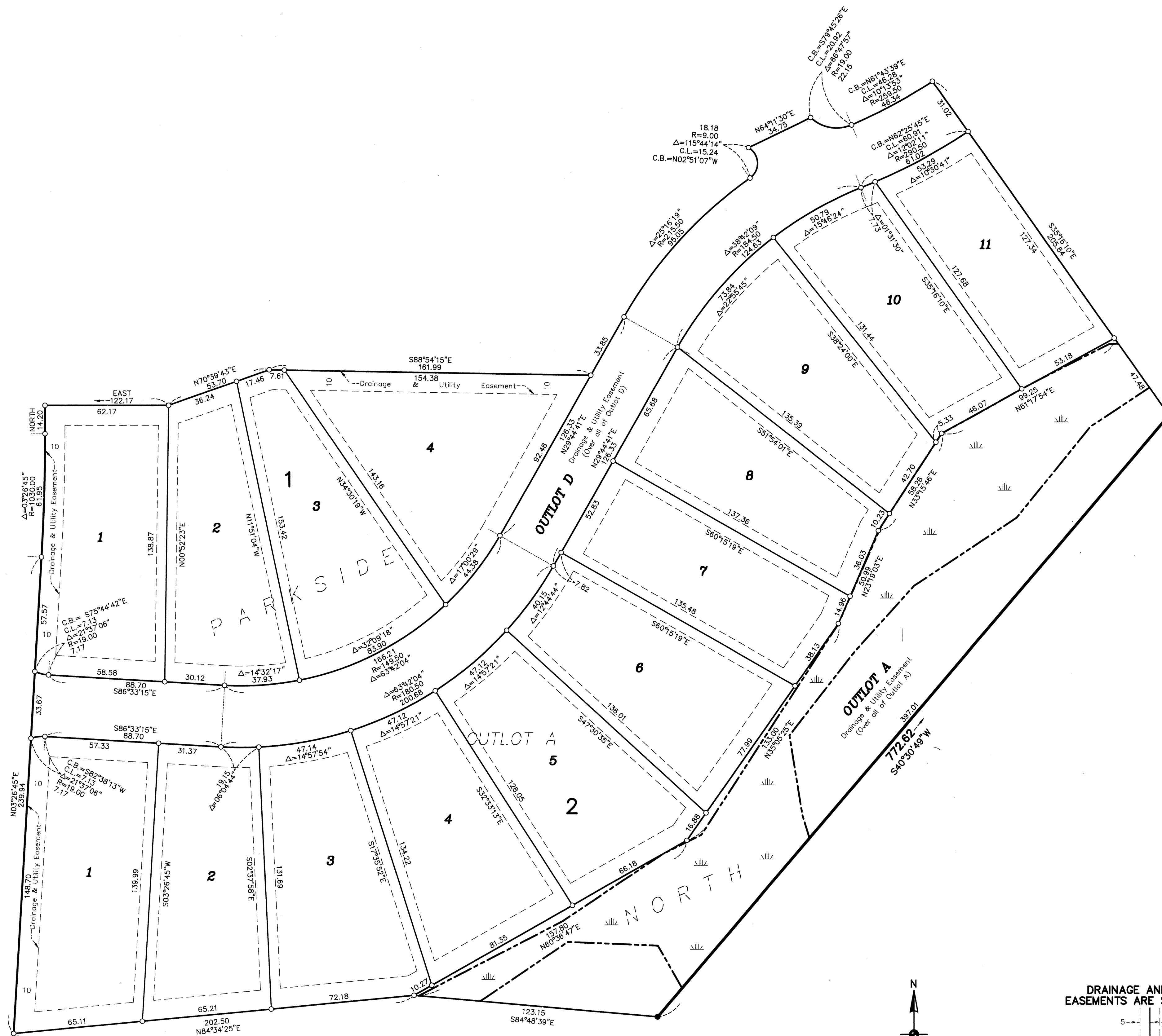


PARKSIDE NORTH 5TH ADDITION

CITY OF BLAINE
COUNTY OF ANOKA
SEC. 12, TWP. 31, RGE. 23

Book 22 Irons Page 31

INSET A



- Denotes 1/2 inch by 14 inch iron monument set or to be set within one year of recording of this plat and marked with license number 40361
- Denotes Found Iron Monument unless otherwise noted
- ▬▬▬ Denotes Wetlands delineated by Kjolhaug Environmental Services in 2013.